

# Installation Instructions



## 2022+ Toyota Tundra® Crew Max Nerf Steps S/BT2286CC & S/BT2286CC-TX



For Technical Support / Warranty Information please call 1-800-776-0767  
Smittybilt, 400 W Artesia, Compton, CA 90220

## Introduction

Thank you for choosing Smittybilt accessories for your Toyota Tundra®. If you would like to view our full range of available accessories, please visit us at [www.smittybilt.com](http://www.smittybilt.com)



Recovery Gear and Winches



Fridges



MOLLE Bag Kit

Toyota® & Tundra® are registered trademarks of Toyota Motor Corporation.

## Important Notes Before Starting

### ! IMPORTANT NOTE

Carefully read through this entire instruction manual thoroughly before attempting to install this part.

### ! WARNING

Serious injury can occur when working on vehicles alone.

When possible, work with another person to reduce risk of injury from strain or other dangers that can occur when working alone.

The following tools will be required to complete the installation of this part:

#### TOOLS REQUIRED

3/8" Socket Wrench	13mm Socket	13mm Wrench
--------------------	-------------	-------------



For Technical Support / Warranty Information please call 1-800-776-0767  
Smittybilt, 400 W Artesia, Compton, CA 90220

## Box Contents & Technical Information

**Box Contents:**

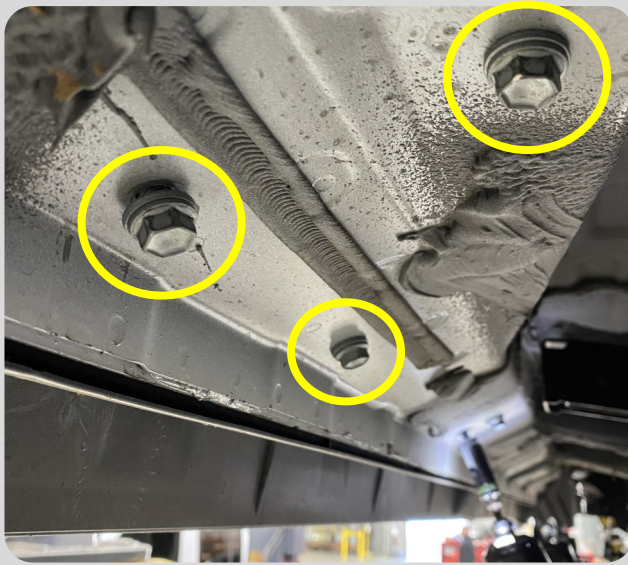


ID	Part Description	QTY
1	Driver Side Nerf Step	1
2	Passenger Side Nerf Step	1
3	M8-1.25x30mm Hex Bolt (Class 8.8)	16
4	M8 Flat Washer	16
5	M8 Split Lock Washer	16



For Technical Support / Warranty Information please call 1-800-776-0767  
Smittybilt, 400 W Artesia, Compton, CA 90220

## Installation Instructions: Nerf Step Installation



### Step 1:

Remove factory running boards and all related hardware.

**Note:** The factory hardware will not be reused in this install.



### Step 2:

Start on either side, have a friend nearby to help raise the step into place. Then loosely install all 8 bolts, flat washers, and lock washers. Make sure the step is properly aligned prior to tightening any of the hardware.

**Note:** Ensure mounting surface is clean prior to starting this step.



For Technical Support / Warranty Information please call 1-800-776-0767  
Smittybilt, 400 W Artesia, Compton, CA 90220

## Installation Instructions: Nerf Step Installation



### Step 3:

Once the step is in place and properly aligned to your liking, torque down all the hardware per the torque spec chart on page 6 of this guide.

### Step 4:

Repeat steps 1-3 for the other side.



### Step 5:

Installation is complete.

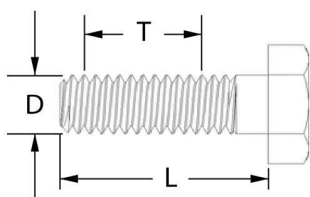


For Technical Support / Warranty Information please call 1-800-776-0767  
Smittybilt, 400 W Artesia, Compton, CA 90220

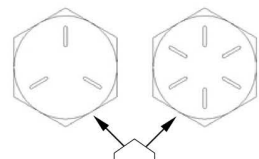
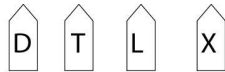
# Bolt Torque Specifications

Use this only as a guide for hardware without a called out torque specification in the instruction manual.

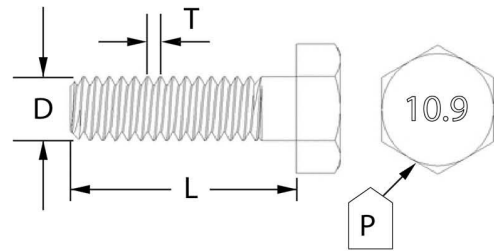
<b>Bolt Torque and ID</b>						
Decimal System			Metric System			
<i>All Torques in Ft. Lbs. Maximums</i>						
Bolt Size	Grade 5	Grade 8	Bolt Size	Class 9.8	Class 10.9	Class 12.9
5/16	15	20	M6	5	9	12
3/8	30	45	M8	18	23	27
7/16	45	60	M10	32	45	50
1/2	65	90	M12	55	75	90
9/16	95	130	M14	85	120	145
5/8	135	175	M16	130	165	210
3/4	185	280	M18	170	240	290



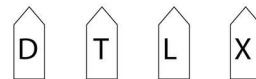
1/2-13x1.75 HHCS



Grade 5      Grade 8  
(No. of Marks +2)



M12-1.25x50 HHCS



G= Grade (Bolt Strength)

D= Nominal Diameter (Inches)

T= Thread Count (Threads per Inch)

L= Length (Inches)

X= Description (Hex Head Cap Screw)

P= Property Class (Bolt Strength)

D= Nominal Diameter (Millimeters)

T= Thread Pitch (Thread Width, mm)

L= Length (Millimeters)

X= Description (Hex Head Cap Screw)



For Technical Support / Warranty Information please call 1-800-776-0767  
Smittybilt, 400 W Artesia, Compton, CA 90220

# Notes and Disclaimers

## Product cleaning and maintenance instructions

Stainless Steel Finish – Aluminum polish may be used to polish small scratches and scuffs on the finish. Mild soap, window or glass cleaner may be used to clean the finish. Dual state powder coat finish – Mild soap, window or glass cleaner may be used to clean the finish. In order to protect the finish, you may wax your product on a regular basis with pure carnauba automotive wax. Do not use any types of soap, polish or wax that contains abrasive that could damage the finish. Textured coated finishes should be cleaned with a mild soap on a damp sponge. Do not apply polish or wax that requires to be removed by means of buffing. This type of wax is commonly used at car wash facilities. Chrome Finish – Mild soap, window or glass cleaner may be used to clean the finish. In order to protect the finish, you should wax your product on a regular basis with pure carnauba automotive wax. Do not use any types of soap, polish or wax that contains abrasive that could damage the finish.

## SMITTYBILT ADVANTAGE WARRANTY

### LIMITED-LIFETIME STRUCTURAL WARRANTY

### 5-YEAR FINISH WARRANTY

Smittybilt Automotive Products, LLC (SAP) warrants to the original purchaser that (a) the physical components (e.g., metal components, welds, etc.) of any SAP **2022+ Toyota Tundra Crew Max Nerf Steps** will be free of defects in material and workmanship for the lifetime of the product, and (b) the finish will be free of defects in material and workmanship for a period of 5-years from the original date of purchase. This warranty applies only to the original purchaser of the nerf steps and is non-transferable. To obtain any warranty service, you must provide SAP with a proof of purchase and date of purchase that is acceptable to SAP, such as a copy of your purchase receipt.

This warranty does not cover labor of part replacement of these nerf steps. SAP will, at its sole discretion, provide replacement part(s) for a defective step or component, provided this is done within the warranty period. To request assistance under warranty, one must call or email using the phone number or email at the bottom of this page. This warranty does not apply (1) wearable components; or (2) if these nerf steps have been damaged, including, but not limited to: abuse, misuse, collision, modification, misapplication, improper installation, or improper service. This warranty is void if any SAP serial number has been removed or defaced; or if the steps are used for any commercial, industrial, or rental applications. This warranty only applies to Nerf Steps bought, sold, and used within the United States or Canada unless otherwise specifically agreed in writing by SAP.

THE WARRANTY SET FORTH ABOVE IS THE ONLY WARRANTY. THERE ARE NO OTHER WARRANTIES, EXPRESSED OR IMPLIED, INCLUDING BUT NOT LIMITED TO IMPLIED WARRANTIES OF MERCHANTABILITY OR FITNESS FOR A PARTICULAR PURPOSE. ANY IMPLIED WARRANTY WHICH BY LAW MAY NOT BE EXCLUDED IS LIMITED TO A DURATION OF ONE (1) YEAR FROM THE DATE OF ORIGINAL RETAIL PURCHASE OF THE PRODUCT. No SAP dealer, agent, or employee is authorized to make any modification, extension or addition to this warranty. SAP SHALL NOT BE LIABLE FOR SPECIAL, INDIRECT, INCIDENTAL OR CONSEQUENTIAL DAMAGES (INCLUDING, BUT NOT LIMITED TO, LOST PROFITS, DOWNTIME OR LOSS OF USE) UNDER ANY LEGAL THEORY, EVEN IF SAP WAS ADVISED OF THE POSSIBILITY OF SUCH DAMAGES. Some states do not allow the exclusion of implied warranties or the exclusion or limitation of liability for incidental or consequential damages, or limitations on how long an implied warranty lasts, so the above limitation or exclusion may not apply to you. This Warranty gives you specific legal rights. You may also have other rights that vary from state to state. SAP reserves the right to change product design without notice. In situations in which SAP has changed a product design, SAP shall have no obligation to upgrade or otherwise modify previously manufactured products. For warranty inquiries contact SAP at:

Smittybilt Automotive Products, LLC

Customer Service Department

Call 1-800-776-0767 or Email [info@smittybilt.com](mailto:info@smittybilt.com)



**WARNING: Cancer and Reproductive Harm**  
[www.P65Warnings.ca.gov](http://www.P65Warnings.ca.gov)



For Technical Support / Warranty Information please call 1-800-776-0767  
Smittybilt, 400 W Artesia, Compton, CA 90220