



WWW.SMITTYBILT.COM

Installation Instructions

Nerf Steps

07-14 JK 2 & 4 Door

Part # J0746, J0764, J1246

Please read instructions entirely before installing this product.
Hardware may vary slightly depending on your application.

Parts Included	J0746/J1246	Qty
Nerf Step Passenger Side		1
Nerf Step Driver Side		1
Adapter Bracket (J1246)		2
Tek Screw		2
10mm Ny-Lock Nut		2
10mm Flat Washer		2
8mm Clip -Nut		18
M8 x 25mm Hex Bolt		18
M8 Flat Washer		18

Parts Included	J0764	Qty
M8 x 35mm Hex Bolt		6
M6 x 20mm Hex Bolt		12
M6 Lock Nut		12
M6 Flat Washer		24
M10 x 30 Hex Bolt		6
M10 Flat Washer		6
M10 Clip-Nut		6

J0746

Step 1: Identify the passenger and driver side bars. The curved end goes towards the front and the flat end will face the rear.

Step 2: Remove any OEM or aftermarket side rails/guards (If equipped)

Step3: Depending on your year model, there will be either existing 8mm threaded holes for the M8 x35mm Hex Bolts or open slots for the M10 x 30mm Hex Bolt and Nut-Clips or a combination of both (See Fig A-E) If needing to use the nut clips with some assistance hold bar up to vehicle to determine proper location and install the nut-clips.



(Fig A, 8mm threaded hole)



(Fig B, slot with nut-clip)



WWW.SMITTYBILT.COM

Installation Instructions

Nerf Steps

07-14 JK 2 & 4 Door

Part # J0746, J0764, J1246

(Driver Side 4 Door)



(Fig C)

Front passenger



(Fig D)

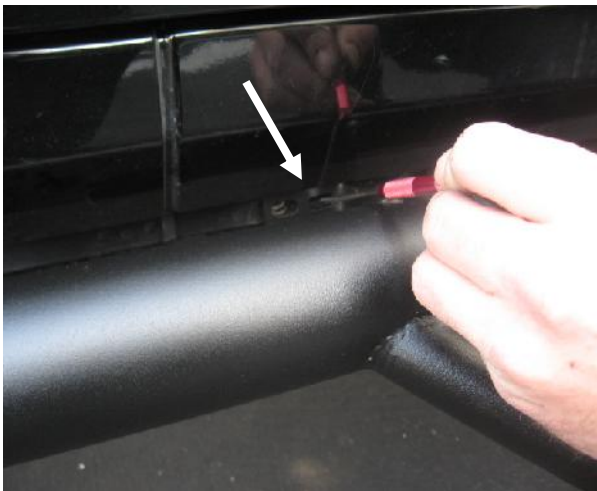
Middle passenger



(Fig E)

Rear passenger

Step 4: Carefully raise the bar up to the pinch weld of the body and align the pinch weld tabs on main bar with holes in pinch weld. Loosely secure with the M6 bolts, washers, nuts. **Note:** Some models may require drilling out additional holes using a 1/4" drill bit in the pinch weld. (Fig F,G)



(Fig F)



(Fig G)

Step 5: Fasten the upper (Under body) mounts with either the supplied 8mm hex bolts into the pre threaded holes in the body tub or using the M10 nut-clips and hex bolts. Do not tighten completely. (Fig H-J)



WWW.SMITTYBILT.COM

Installation Instructions

Nerf Steps

07-14 JK 2 & 4 Door

Part # J0746, J0764, J1246



Driver Side Front 4 Door

(Fig H)



Driver Side Middle 4 door

(Fig I)



Driver Side Rear 4 Door

(Fig J)

Step 6: Align the step and then secure the pinch weld bolts securely and then proceed to tighten the underneath hardware completely. Installation is complete, repeat steps for opposite side.





WWW.SMITTYBILT.COM

Installation Instructions

Nerf Steps

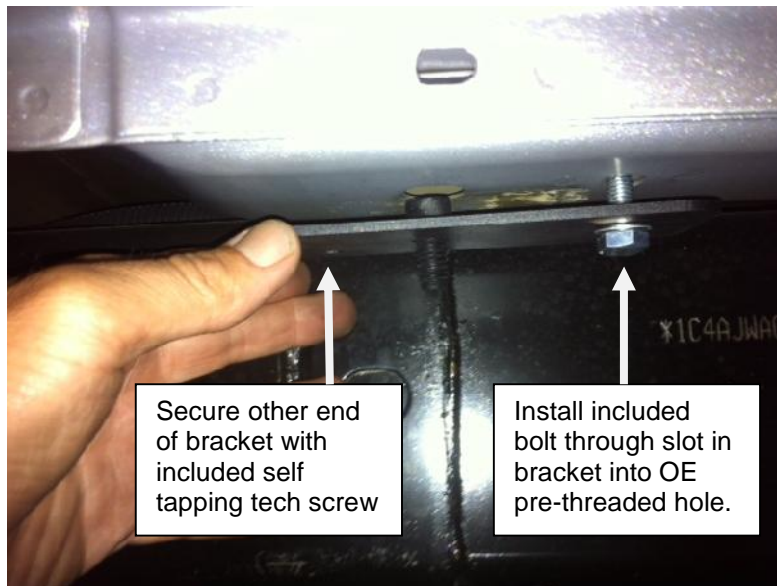
07-14 JK 2 & 4 Door

Part # J0746, J0764, J1246

2012-2017 2-Door Models Rear Bracket Part #J1246

The rear bracket on newer 2 door models do not line up to a hole on the underneath portion of the body. Install the included adapter plates to install nerf steps.

Step A: Place the adapter bracket on the bottom of body, the bend on the bracket will go inward on one side and outward on the other. Line the slot in the bracket with the OEM pre-threaded hole and secure with included bolt. Secure the opposite end of the bracket with the included tek screw. (Fig H, J) Before tightening completely make sure rear bracket on Nerf step will line up with threaded stud on bracket. (Fig J)



Secure other end of bracket with included self tapping tech screw

Install included bolt through slot in bracket into OE pre-threaded hole.

(Fig H)



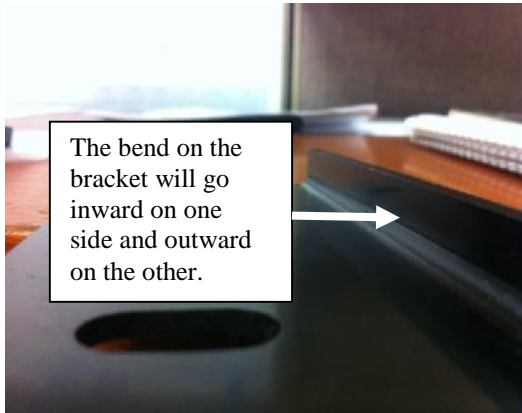
WWW.SMITTYBILT.COM

Installation Instructions

Nerf Steps

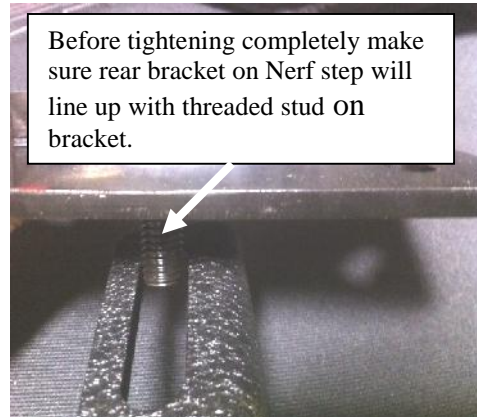
07-14 JK 2 & 4 Door

Part # J0746, J0764, J1246



The bend on the bracket will go inward on one side and outward on the other.

(Fig I)



Before tightening completely make sure rear bracket on Nerf step will line up with threaded stud on bracket.

(Fig J)

Step B: Place step to the side and proceed with above installation instructions starting at Step 3 above.

Step C: The rear bracket on the step attaches to the adapter plate you previously installed with the included 10mm hardware.



Limited Warranties

Smittybilt's products are covered under the following limited warranties only. Note that the duration of the limited warranty differs according to the material and finish of the product purchased. Subject to the duration and conditions of the limited warranty stated below, Smittybilt warrants to the original retail purchaser that its products are free from defects in material and workmanship. All other warranties and representations express or implied, are hereby disclaimed, including fitness for merchantability and buyer's intended use or purpose. All parts are sold "AS IS" except for the limited warranties granted herein. Buyer assumes all risks as to the selection, suitability and performance of all goods and products selected. This limited warranty does not cover damage or impairment in any part due to misuse, improper installation, accident or contact with on-road or off-road hazards, product modification, improper or inadequate cleaning and/or maintenance. Smittybilt is not responsible for items damaged during shipping. This warranty is not transferable from the original buyer. For the original Buyer to be eligible for the limited warranty coverage, the Buyer must provide proof of purchase. Smittybilt strongly recommends returning the warranty registration card.

Customer's remedy hereunder shall be limited only to repair or replacement (at Smittybilt's option) of any defective part(s) returned to Smittybilt at customer's expense. The determination of whether or not a returned part is defective or subject to coverage under the limited warranties stated herein shall be made at Smittybilt's sole discretion.

To assure product quality, Smittybilt reserves the right to change product design, material, specification and finishes without prior notice to customers. This limited warranty gives you specific legal rights and you may also have other rights, which may vary from state to state. Some states do not allow limitations on how long an implied warranty lasts, so the above limitations may not apply as to you. Also, some states do not allow the exclusion or limitation of incidental or consequential damages, so the above limitations or exclusions may not apply to you. Smittybilt reserves the right to discontinue product lines and substitute products, or provide other remedies than those listed in this limited warranty for those discontinued products.

Warning

Rollover and other types of vehicle accidents may result in serious injury or death to you, your passengers and others sharing the road. Smittybilt accessories are decorative and are not intended to reduce or avoid injury or damage in the event of an accident. The weight and location of Smittybilt accessories may affect your vehicles' handling, stability and performance, creating an increased risk of accident or rollover. Before installing any accessory, check state laws and assure that the accessory will not obscure any lights or interfere with proper operation on your vehicle's safety equipment. Consult your owner's manual and the Smittybilt instructions, or additional safety information. Smittybilt products, nor the warnings contained herein, are not a substitute for your safe driving. Don't drink and drive, always use seat belts and don't drive faster than conditions permit.