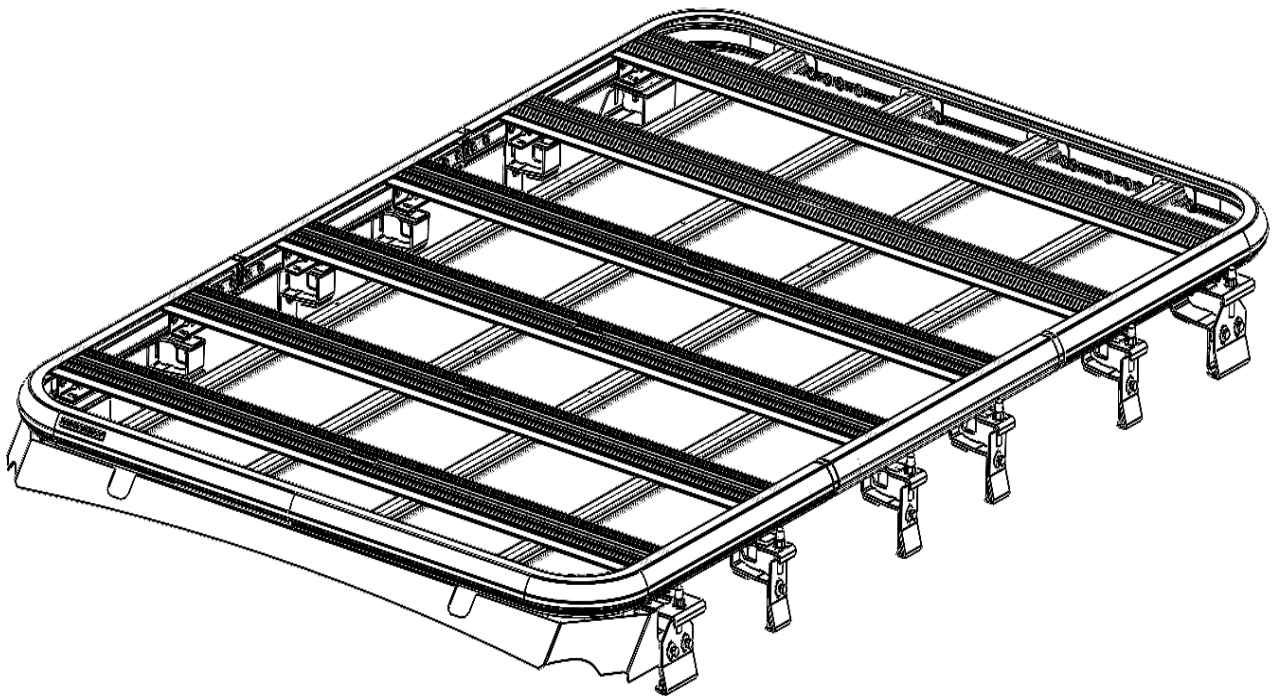


Installation Instructions



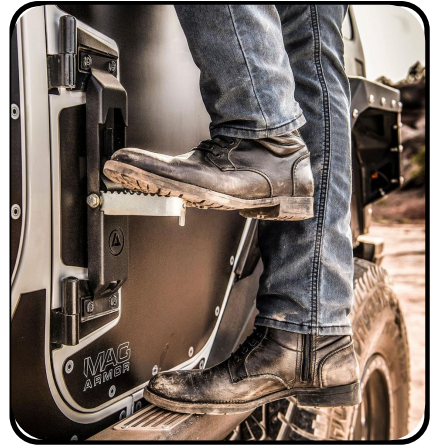
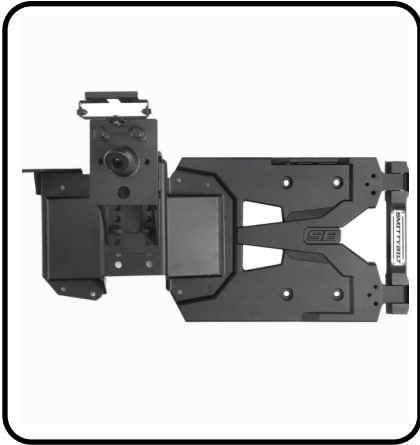
18+ JEEP JL / JT Defender Platform Mounting kit
P# **S/BJ02**



For Technical Support / Warranty Information please call **800-776-0767 EXT 1317**
Smittybilt, 400 W Artesia, Compton, CA 90220

Introduction

Thank you for choosing Smittybilt accessories for your **JEEP JL/JT**. If you would like to view our full range of available accessories, please visit us at www.smittybilt.com



Important Notes Before Starting

! IMPORTANT NOTE

Carefully read through this entire instruction manual thoroughly before attempting to install this part. Please refer to the vehicles owner's manual for roof weight capacity (include weight of rack). Check that all fasteners are properly torqued after installing the roof rack and driving a short distance. Fasteners should be checked regularly before loading roof rack. Fasten loads securely and evenly distribute loads across the rack. Lower the center of gravity of all loads as much as possible. Wind can affect driving sensitivity with roof racks.

! WARNING

Serious injury can occur when working on vehicles alone.

When possible, work with another person to reduce risk of injury from strain or other dangers that can occur when working alone.

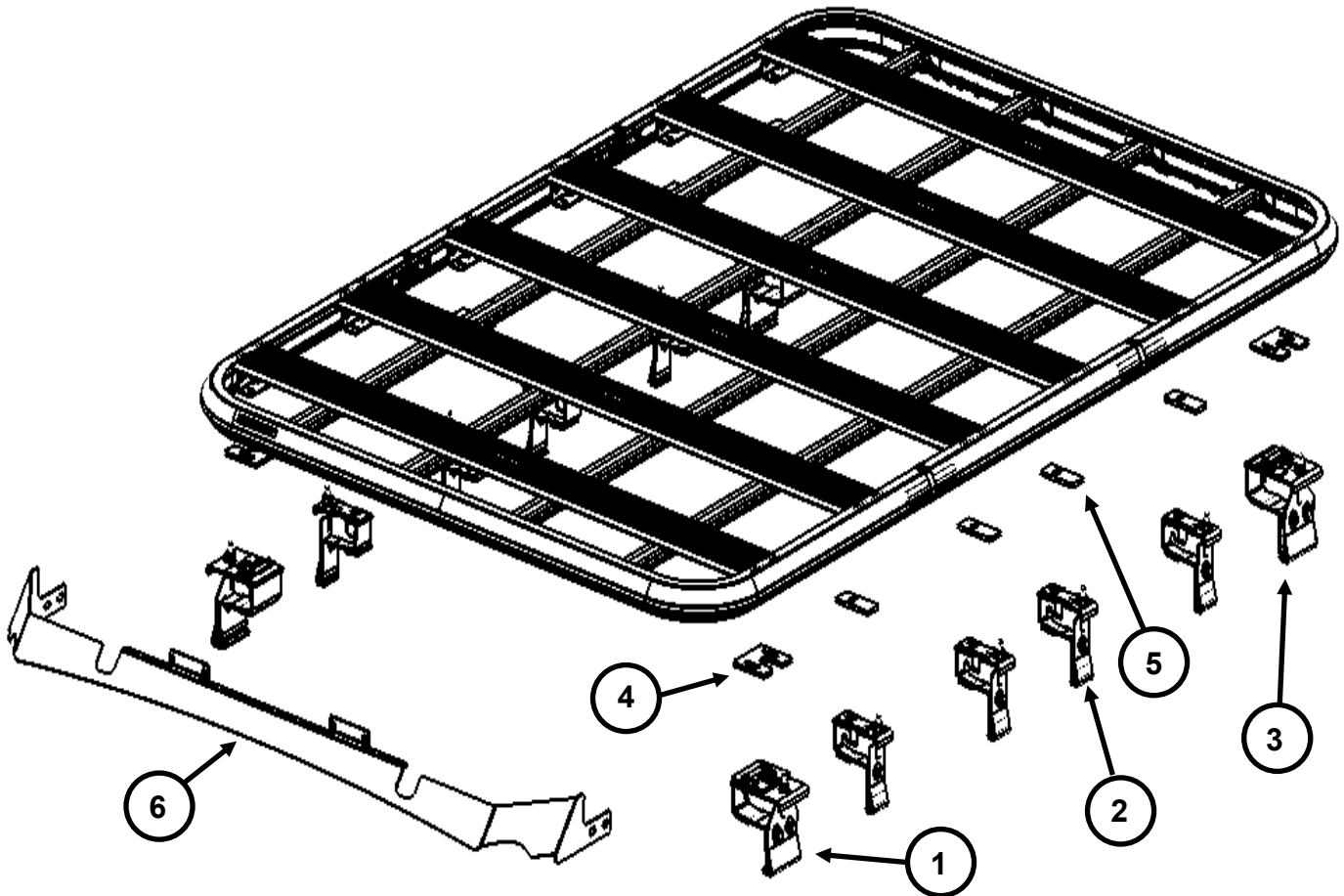
TOOLS REQUIRED The following tools will be required to complete the installation of this part:

Torque wrench	Ratchet	10mm socket
13mm socket	4mm hex key	4mm hex bit socket
10mm wrench		



For Technical Support / Warranty Information please call 800-776-0767 EXT 1317
Smittybilt, 400 W Artesia, Compton, CA 90220

Box Contents

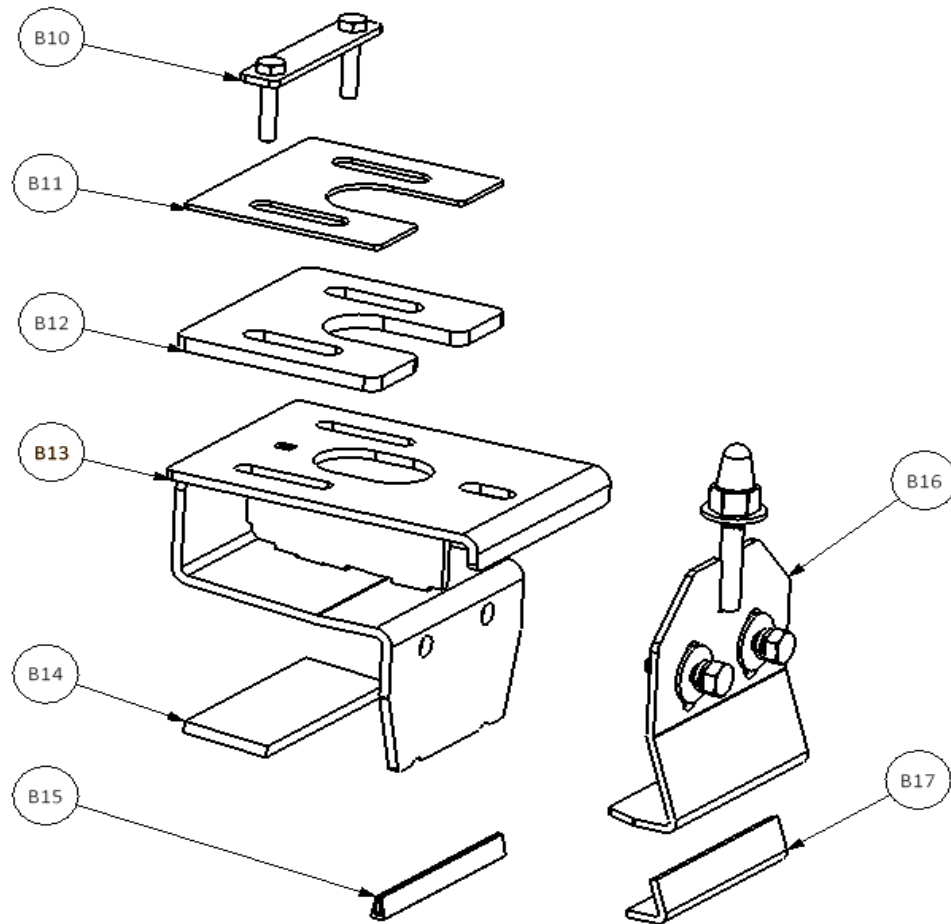


ID #	Description	QTY
1	Front mounting bracket	2
2	Narrow mounting bracket	8
3	Rear mounting bracket	2
4	Mounting shim	4
5	Narrow mounting shim	8
6	Wind deflector	1



For Technical Support / Warranty Information please call 800-776-0767 EXT 1317
Smittybilt, 400 W Artesia, Compton, CA 90220

Box Contents

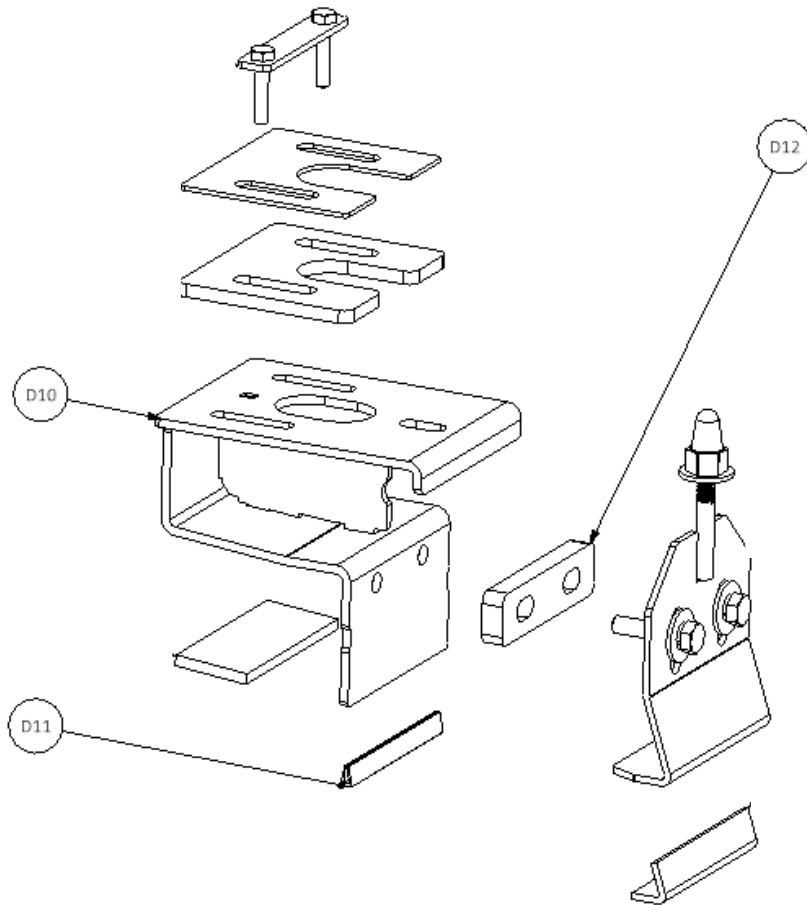


ID #	Description	QTY
B10	M6 Bolt plate	4
B11	Large mounting bracket top foam pad	4
B12	Mounting shim	4
B13	Front mounting bracket	4
B14	Front mounting bracket foam pad	4
B15	Front mounting bracket trim	2
B16	Large mounting bracket clamp	4
B17	Large mounting bracket clamp foam pad	8



For Technical Support / Warranty Information please call 800-776-0767 EXT 1317
Smittybilt, 400 W Artesia, Compton, CA 90220

Box Contents

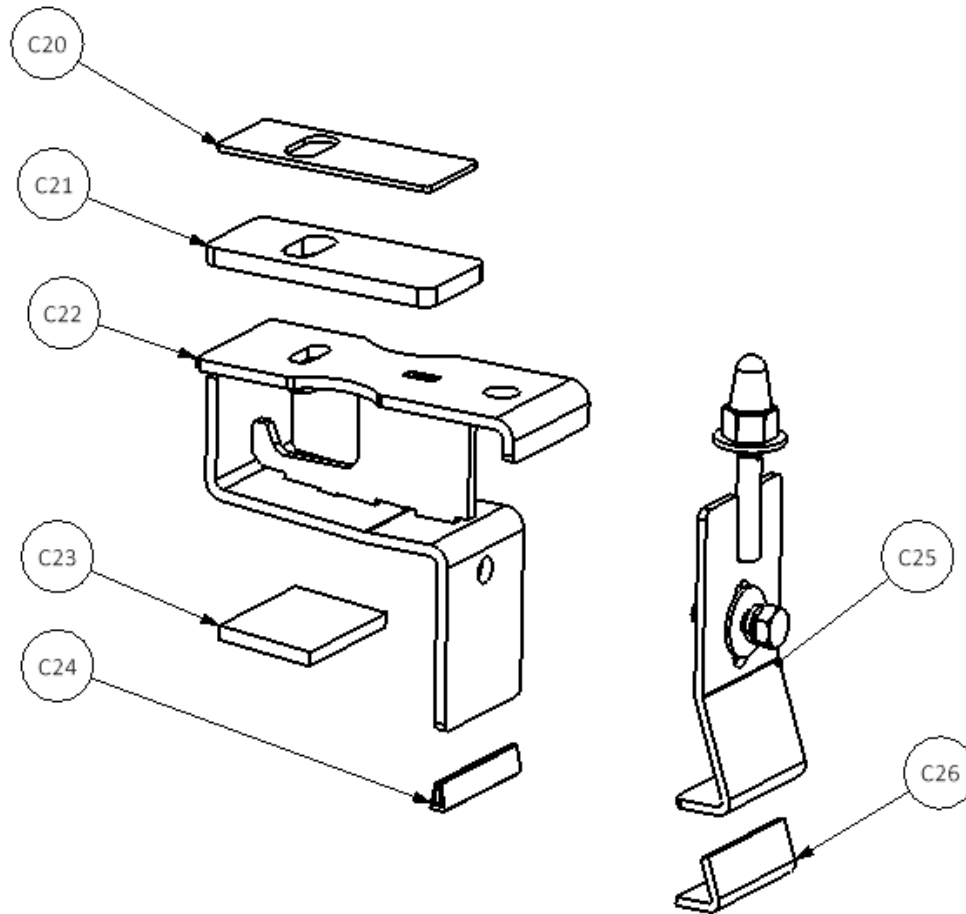


ID #	Description	QTY
D10	Rear mounting bracket	2
D11	Rear mounting bracket trim	2
D12	Large mounting clamp spacer	2



For Technical Support / Warranty Information please call 800-776-0767 EXT 1317
Smittybilt, 400 W Artesia, Compton, CA 90220

Box Contents



ID #	Description	QTY
C20	Narrow mounting bracket top foam pad	8
C21	Narrow mounting shim	8
C22	Narrow mounting bracket	8
C23	Narrow mounting bracket foam pad	8
C24	Narrow mounting bracket trim	8
C25	Narrow mounting bracket clamp	8
C26	Narrow mounting bracket clamp foam pad	8



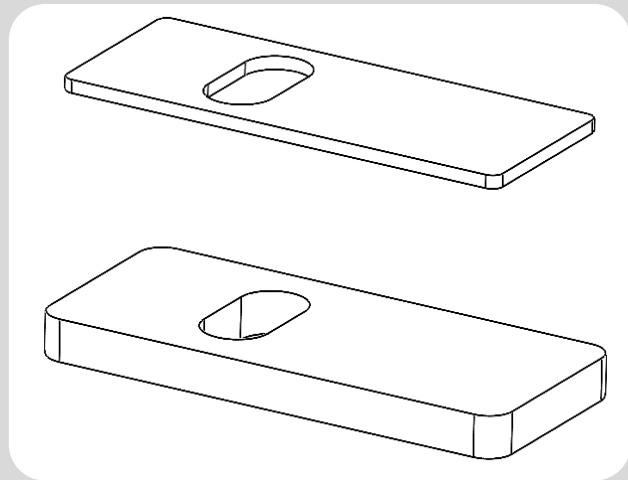
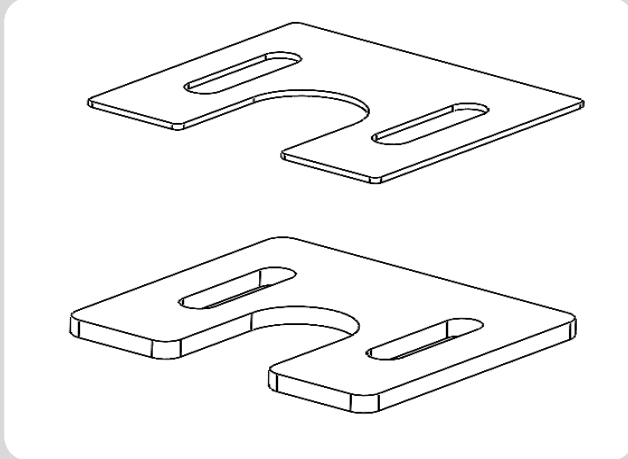
For Technical Support / Warranty Information please call 800-776-0767 EXT 1317
Smittybilt, 400 W Artesia, Compton, CA 90220

Installation Instructions

Step 1:

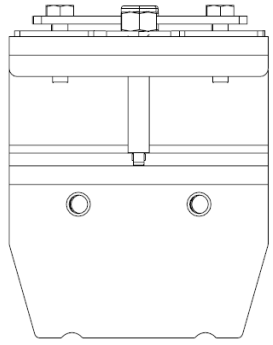
Install foam pad to the following parts

- Large shim
- Small shim
- Front mounting bracket
- Rear mounting bracket
- Large mounting bracket clamp
- Small mounting bracket clamp



For Technical Support / Warranty Information please call 800-776-0767 EXT 1317
Smittybilt, 400 W Artesia, Compton, CA 90220

Installation Instructions



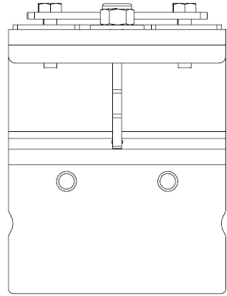
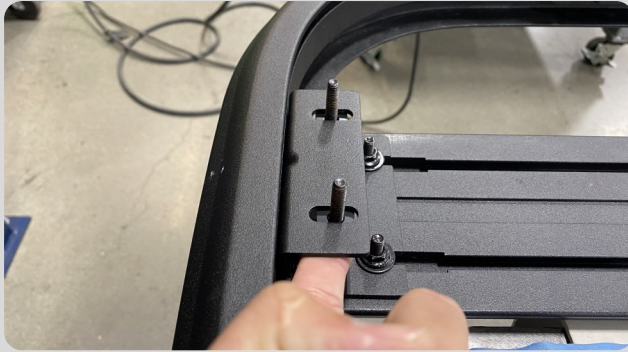
Front
bracket

Step 2:

Place your Defender Rack 2.0 (upside down) on a bench and install the front mounting bracket to one of the front corners of the rack. Secure with a M6 bolt plate, bolts facing up.

Loosely secure using (1) M6 bolt plate, (2) M6 flat washers and (2) M6 nylock nuts.

Repeat step on the remaining front corner.



Rear
bracket

Step 3:

Install the rear mounting bracket to the rear corner of the rack. Secure with a M6 bolt plate, bolts facing up.

Loosely secure using (1) M6 bolt plate, (2) M6 flat washers, and (2) M6 nylock nuts.

Repeat step on the remaining rear corner.



For Technical Support / Warranty Information please call 800-776-0767 EXT 1317
Smittybilt, 400 W Artesia, Compton, CA 90220

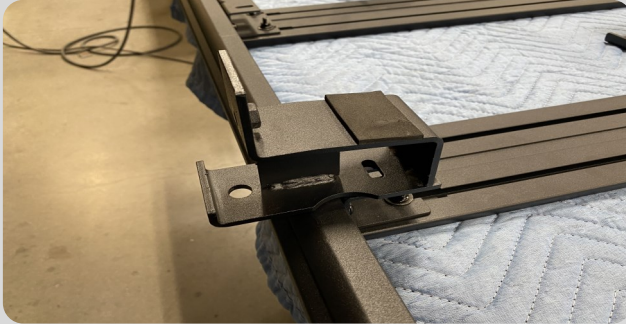
Installation Instructions



IMPORTANT NOTE

Depending on the kit, the number of middle mounting brackets will change.

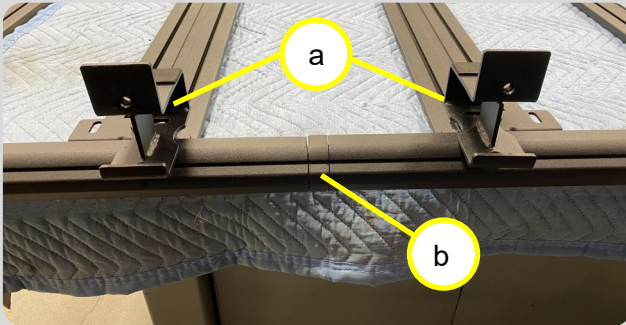
Jeep JL Regular: (4) brackets, Jeep JL Extended: (8) brackets, Jeep JT: (4) brackets



Step 4:

Install the middle mounting bracket to the remaining brackets on the rack.

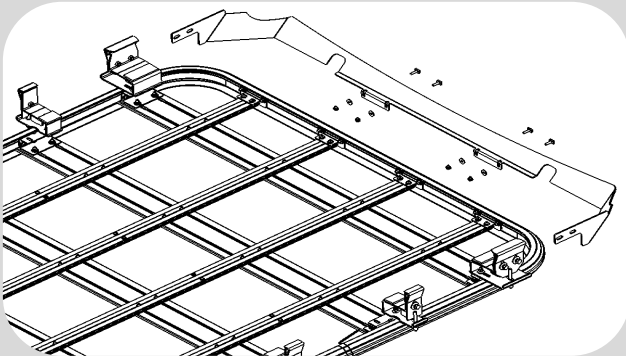
Loosely secure the mounting bracket to rack mounting bracket using (1) M6 x 20mm bolt, (2) M6 washer, (1) M6 nylock nut.



- Regular kit (4) brackets
- Extended kit (8) brackets

A. Middle mounting bracket

B. Platform connector



Step 5:

Install wind deflector onto the front of the roof rack using the pre installed T bolts.

Using the M6 flange nuts and washers tighten the wind deflector.

Apply weather strip to the front of the deflector.



IMPORTANT NOTE

Leave all mounting brackets hardware slightly loose for adjustment on the vehicle



For Technical Support / Warranty Information please call 800-776-0767 EXT 1317
Smittybilt, 400 W Artesia, Compton, CA 90220

Installation Instructions



Step 6:

With the help of another person place the roof rack on the vehicle roof.

Make sure all mounting brackets are inside roof rain gutter.



Step 7:

Install the large mounting bracket clamp to rear mounting bracket by inserting the clamp stud through the top slot of the mounting bracket.

Secure using (1) M8 nylock nut and (1) M8 flat washer.

Leave it loose for now



Step 8:

Install the large mounting clamp spacer between mounting bracket and the large mounting bracket clamp.

Secure the large mounting clamp to mounting bracket using (2) M8 x 35mm bolts, (2) M8 flat washer and (2) M8 lock washer.

Repeat Step 7 and Step 8 for the remaining rear bracket.



For Technical Support / Warranty Information please call 800-776-0767 EXT 1317
Smittybilt, 400 W Artesia, Compton, CA 90220

Installation Instructions



Step 9:

Install the small mounting bracket clamp to middle mounting bracket by inserting the clamp stud into the top slot of the mounting bracket.

Secure using (1) M8 nylock nut and (1) M8 flat washer.

Secure using (1) M8 x 25mm bolt, (1) M8 flat washer and (1) M8 lock washer.

Leave loose.



Step 10:

Install the large mounting bracket clamp to front mounting bracket by inserting the clamp stud through the top slot of the mounting bracket.

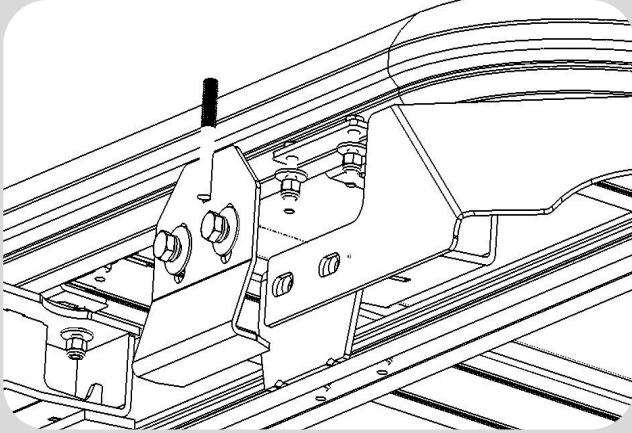
Secure using (1) M8 nylock nut and (1) M8 flat washer.

Leave it loose for now



For Technical Support / Warranty Information please call 800-776-0767 EXT 1317
Smittybilt, 400 W Artesia, Compton, CA 90220

Installation Instructions



Step 11:

Install the wind deflector side mounting point between the large mounting bracket and the large mounting bracket clamp.

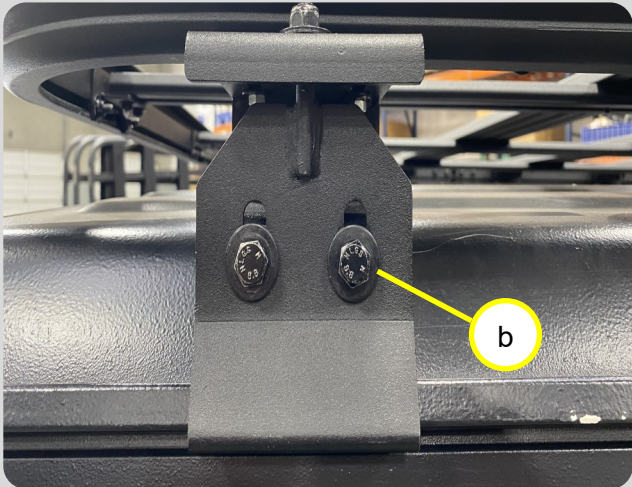
Secure the large mounting clamp to mounting bracket using (2) M8 x 35mm bolts, (2) M8 flat washer and (2) M8 lock washer.



Step 12:

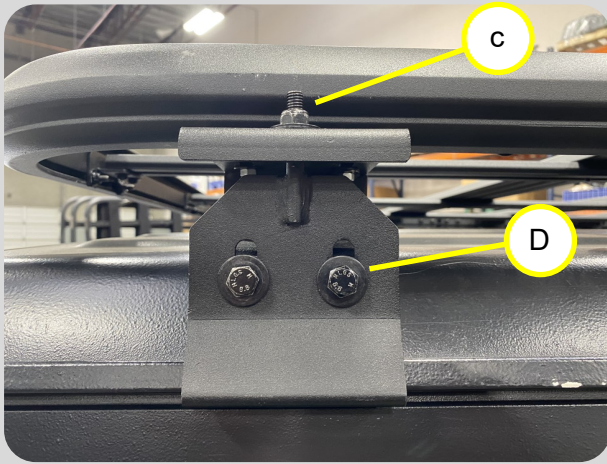
Hand tight all the M8 bolts securing the mounting bracket clamps to the mounting brackets.

B. M8 bolts



For Technical Support / Warranty Information please call 800-776-0767 EXT 1317
Smittybilt, 400 W Artesia, Compton, CA 90220

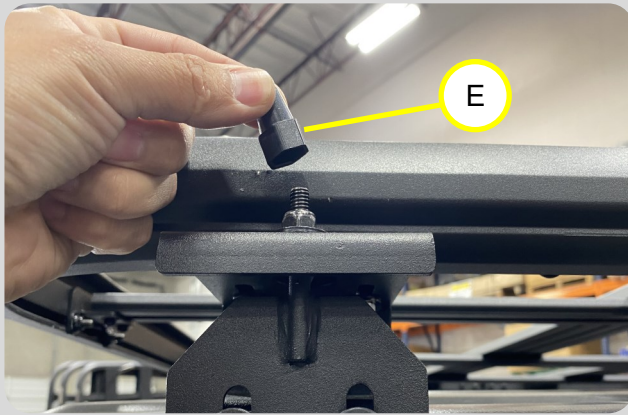
Installation Instructions



Step 13:

C. Tight all the M8 nylock nuts securing the mounting bracket clamps to the mounting brackets.

D. M8 nylock nut.
Tight all the M8 bolts from the previous step to spec. Refer to the torque chart at the end of the instructions.



Step 14:

Install the nut plastic cover to all M8 nylock nuts securing the bracket clamps to mounting brackets.

E. Plastic nut cap



Step 15: (optional)

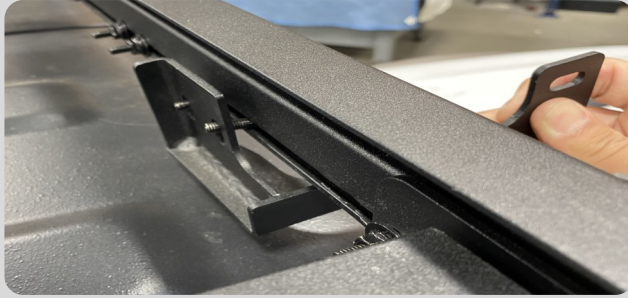
Install the light pod bracket using the T-bolts pre install on the inner front section.

Place the bracket with the light mount facing up.



For Technical Support / Warranty Information please call 800-776-0767 EXT 1317
Smittybilt, 400 W Artesia, Compton, CA 90220

Installation Instructions: Wiring Installation



Step 16: (optional)

Install LED light bracket to roof platform.

Align the slots of the light bracket to the T-bolts pre-install on the inner front section of the roof platform. Leave it loose for now.

Install light bar to brackets using the hardware provided with the light.

Align the LED light bar and tighten the light bracket hardware.



IMPORTANT NOTE

Note: Torque all hardware to spec refer to torque chart on page # 16

Your installation is now complete



For Technical Support / Warranty Information please call 800-776-0767 EXT 1317
Smittybilt, 400 W Artesia, Compton, CA 90220

Installation Instructions: Power Board Switch



JEEP JL Extended kit.



JEEP JL Regular kit.



JEEP JT Kit

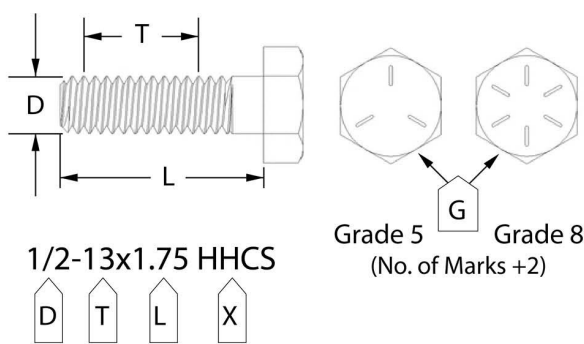


For Technical Support / Warranty Information please call 800-776-0767 EXT 1317
Smittybilt, 400 W Artesia, Compton, CA 90220

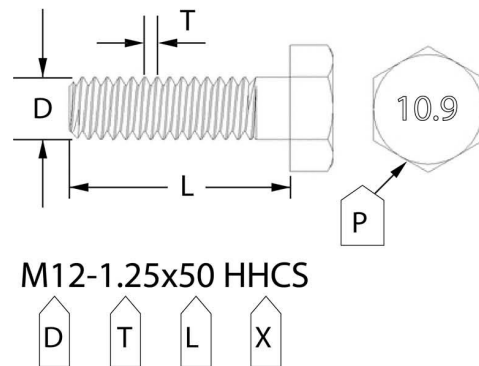
Bolt Torque Specifications

Use this only as a guide for hardware without a called out torque specification in the instruction manual.

Bolt Torque and ID						
Decimal System			Metric System			
All Torques in Ft. Lbs. Maximums						
Bolt Size	Grade 5	Grade 8	Bolt Size	Class 9.8	Class 10.9	Class 12.9
5/16	15	20	M6	5	9	12
3/8	30	45	M8	18	23	27
7/16	45	60	M10	32	45	50
1/2	65	90	M12	55	75	90
9/16	95	130	M14	85	120	145
5/8	135	175	M16	130	165	210
3/4	185	280	M18	170	240	290



G= Grade (Bolt Strength)
D= Nominal Diameter (Inches)
T= Thread Count (Threads per Inch)
L= Length (Inches)
X= Description (Hex Head Cap Screw)



P= Property Class (Bolt Strength)
D= Nominal Diameter (Millimeters)
T= Thread Pitch (Thread Width, mm)
L= Length (Millimeters)
X= Description (Hex Head Cap Screw)



For Technical Support / Warranty Information please call 800-776-0767 EXT 1317
Smittybilt, 400 W Artesia, Compton, CA 90220

Notes and Disclaimers

Product cleaning and maintenance instructions

Stainless Steel Finish – Aluminum polish may be used to polish small scratches and scuffs on the finish. Mild soap, window or glass cleaner may be used to clean the finish. Dual state powder coat finish – Mild soap, window or glass cleaner may be used to clean the finish. In order to protect the finish, you may wax your product on a regular basis with pure carnauba automotive wax. Do not use any types of soap, polish or wax that contains abrasive that could damage the finish. Textured coated finishes should be cleaned with a mild soap on a damp sponge. Do not apply polish or wax that requires to be removed by means of buffing. This type of wax is commonly used at car wash facilities. Chrome Finish – Mild soap, window or glass cleaner may be used to clean the finish. In order to protect the finish, you should wax your product on a regular basis with pure carnauba automotive wax. Do not use any types of soap, polish or wax that contains abrasive that could damage the finish.

Limited Warranties

Smittybilt's products are covered under the following limited warranties only. Note that the duration of the limited warranty differs according to the material and finish of the product purchased. Subject to the duration and conditions of the limited warranty stated below, Smittybilt warrants to the original retail purchaser that its products are free from defects in material and workmanship. All other warranties and representations express or implied, are hereby disclaimed, including fitness for merchantability and buyer's intended use or purpose. All parts are sold "AS IS" except for the limited warranties granted herein. Buyer assumes all risks as to the selection, suitability and performance of all goods and products selected. This limited warranty does not cover damage or impairment in any part due to misuse, improper installation, accident or contact with on-road or off-road hazards, product modification, improper or inadequate cleaning and/or maintenance. Smittybilt is not responsible for items damaged during shipping. This warranty is not transferable from the original buyer. For the original Buyer to be eligible for the limited warranty coverage, the Buyer must provide proof of purchase. Smittybilt strongly recommends returning the warranty registration card. Customer's remedy hereunder shall be limited only to repair or replacement (at Smittybilt's option) of any defective part(s) returned to Smittybilt at customer's expense. The determination of whether or not a returned part is defective or subject to coverage under the limited warranties stated herein shall be made at Smittybilt's sole discretion. To assure product quality, Smittybilt reserves the right to change product design, material, specification and finishes without prior notice to customers. This limited warranty gives you specific legal rights and you may also have other rights, which may vary from state to state. Some states do not allow limitations on how long an implied warranty lasts, so the above limitations may not apply as to you. Also, some states do not allow the exclusion or limitation of incidental or consequential damages, so the above limitations or exclusions may not apply to you. Smittybilt reserves the right to discontinue product lines and substitute products or provide other remedies than those listed in this limited warranty for those discontinued products.

Warning

Rollover and other types of vehicle accidents may result in serious injury or death to you, your passengers and others sharing the road. Smittybilt accessories are decorative and are not intended to reduce or avoid injury or damage in the event of an accident. The weight and location of Smittybilt accessories may affect your vehicles' handling, stability and performance, creating an increased risk of accident or rollover. Before installing any accessory, check state laws and assure that the accessory will not obscure any lights or interfere with proper operation on your vehicle's safety equipment. Consult your owner's manual and the Smittybilt instructions, or additional safety information. Smittybilt products, nor the warnings contained herein, are not a substitute for your safe driving. Don't drink and drive, always use seat belts and don't drive faster than conditions permit.



WARNING: Cancer and Reproductive Harm
www.P65Warnings.ca.gov



For Technical Support / Warranty Information please call 800-776-0767 EXT 1317
Smittybilt, 400 W Artesia, Compton, CA 90220