

Installation Instructions



55L/75L Fridge Slide Part # S/BFRIDGESLIDE55L & S/BFRIDGESLIDE75L



For Technical Support / Warranty Information please call 1-800-776-0767
Smittybilt, 400 W Artesia, Compton, CA 90220

Introduction

Thank you for choosing Smittybilt accessories for your overlanding needs! If you would like to view our full range of available overlanding accessories, please visit us at www.smittybilt.com



Waypoint™ & Basecamp™ Fridge



Overland Tents



Overland Awnings

Important Notes Before Starting

! IMPORTANT NOTE

Carefully read through this entire instruction manual thoroughly before attempting to install this part.

! IMPORTANT NOTE

Maximum weight capacity of this slider is 265lbs (120kg) evenly distributed. Do not exceed.

! WARNING

Park vehicle on flat surface, chock all four wheels and engage parking brake prior to installation.

Serious injury can occur when working on vehicles alone. When possible, work with another person to reduce risk of injury from strain or other dangers that can occur when working alone.

The following tools will be required to complete the installation of this part:

TOOLS REQUIRED

3/8" Ratchet Wrench	13mm Socket	Marker
Drill	25/64" Drill Bit	Punch



For Technical Support / Warranty Information please call 1-800-776-0767
Smittybilt, 400 W Artesia, Compton, CA 90220

Box Contents



ID	Part Description	QTY
1	Fridge Slide (55L or 75L)	1
2	Lashing Strap	4
3	M10-1.5x50mm Hex Bolt	8

ID	Part Description	QTY
4	M10-1.5 Nylock Nut	8
5	M10 Flat Washer	16

Specifications



FRIDGESLIDE55L

Material	Galvanized Steel
Sliders	Zinc Coated Steel Ball-Bearing
Max Fridge Capacity	55 Liters
Max Weight Capacity	120kg
Outer Dimensions (LxWxH)	30.7"x20.6"x3.5"
Inner Dimensions (LxWxH)	29.3"x18.7"

FRIDGESLIDE75L

Material	Galvanized Steel
Sliders	Zinc Coated Steel Ball-Bearing
Max Fridge Capacity	75 Liters
Max Weight Capacity	120kg
Outer Dimensions (LxWxH)	40.7"x24.8"x3.5"
Inner Dimensions (LxWxH)	39.2"x22.4"

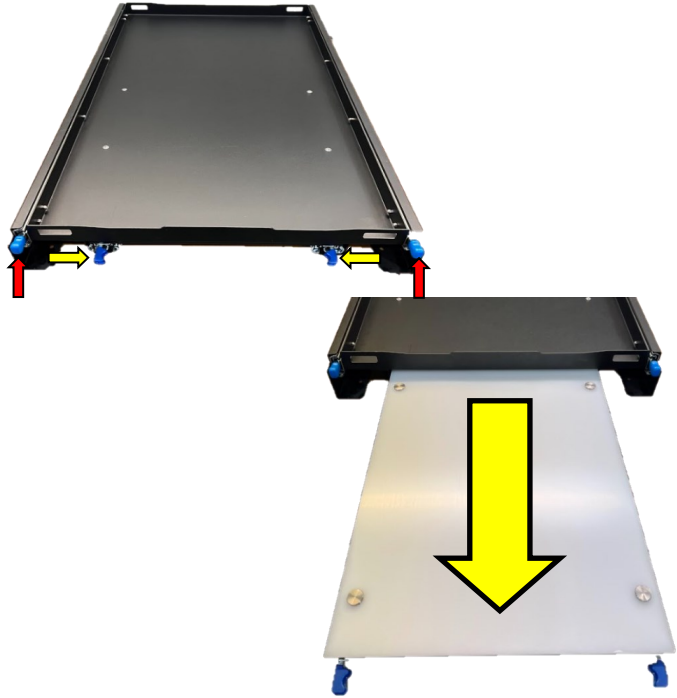


For Technical Support / Warranty Information please call 1-800-776-0767
Smittybilt, 400 W Artesia, Compton, CA 90220

Slide and Cutting Board Operation

Extend the slide or cutting board:

Locate the two blue locking tabs as shown on the right (slide tabs in red, cutting board tabs in yellow). Press both tabs inwards simultaneously and pull outwards until the slide or cutting board is fully extended. You will hear an audible click once locked into place.



Retracting the slide or cutting board:

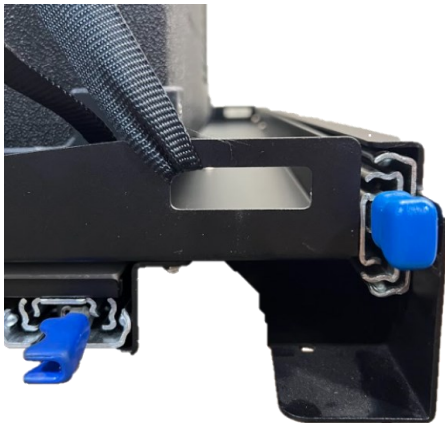
Press the locking tabs inwards and push the board or slide inwards until it locks into its fully retracted position. You will hear an audible click once locked into place.

Do not extend the cutting board with the slide extended.

Tiedown Points

Tiedowns:

There are 4 tiedown points (1 in each corner, shown below). Insert one end of the included tie downs through the tiedown point, then secure the fridge in place as shown on the right. Do this on all 4 corners.



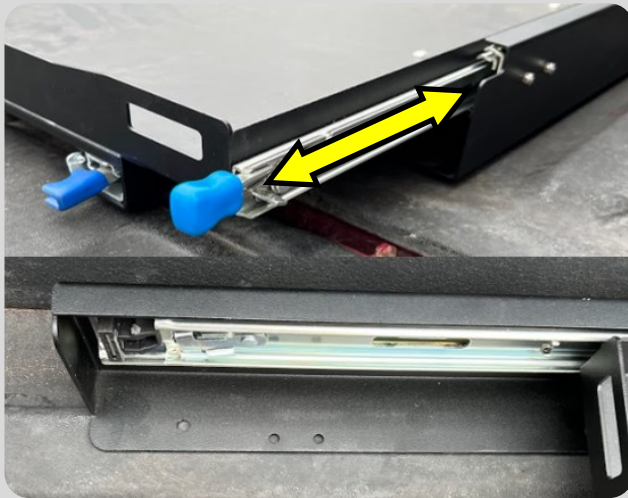
For Technical Support / Warranty Information please call 1-800-776-0767
Smittybilt, 400 W Artesia, Compton, CA 90220

Installation Instructions: Fridge Slide Installation



Step 1:

Find a suitable mounting area for your fridge slide. Then, lay the fridge slide down, making sure there is no interference in the operation of the slide. Be sure all 8 mounting holes have nice clear contact with the mounting surface.



Step 2:

Once you're happy with the location of the fridge slide. Press both blue slide locking tabs and pull the drawer out until it is fully extended. Be sure the base of the slide doesn't move and the slide is supported by having another person hold it in place.



Step 3:

Use a marker to mark all 8 mounting holes of the slide. Then, move the slide to prepare for drilling.

NOTE: Before drilling, be sure to check that the fuel tank, wires, cables, or other objects are not located underneath drilling locations.



For Technical Support / Warranty Information please call 1-800-776-0767
Smittybilt, 400 W Artesia, Compton, CA 90220

Installation Instructions: Fridge Slide Installation



Step 4:

Use a punch to mark the center of the marks you made in **Step 3**.

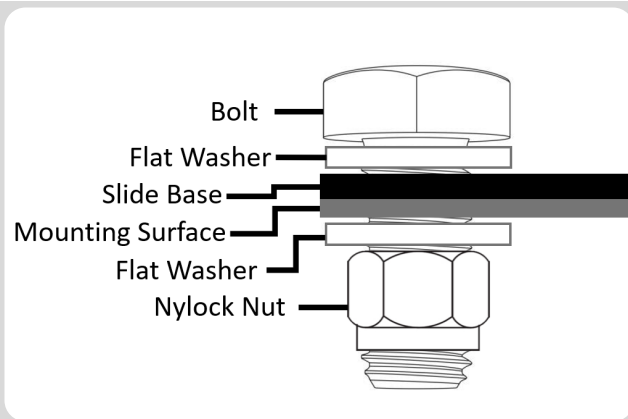
Then use a small drill bit to drill a pilot hole. Do this for all 8 holes.

Note: Steps 4-6 only apply if using the included hardware or similar hardware. Be sure there is access to the underside of the mounting area to secure flat washers and nuts. If access is limited you may need to source hardware locally.



Step 5:

Once pilot holes are drilled, slowly increase the size of the drill bit until you reach a **13/32" bit**. This will be the size required to use the included M10 hardware. Do not exceed 13/32" if using the supplied hardware.



Step 6:

Install the hardware as shown in the diagram on the left. Once all 8 bolts and corresponding hardware has been installed, **installation is complete**.

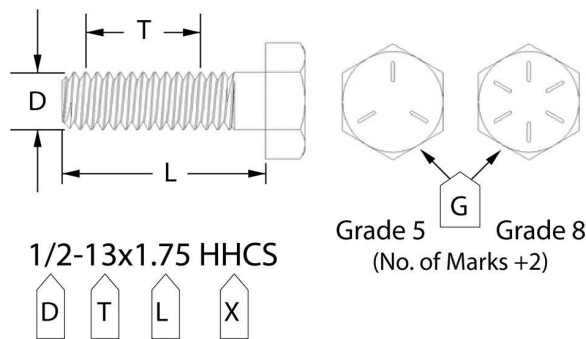


For Technical Support / Warranty Information please call 1-800-776-0767
Smittybilt, 400 W Artesia, Compton, CA 90220

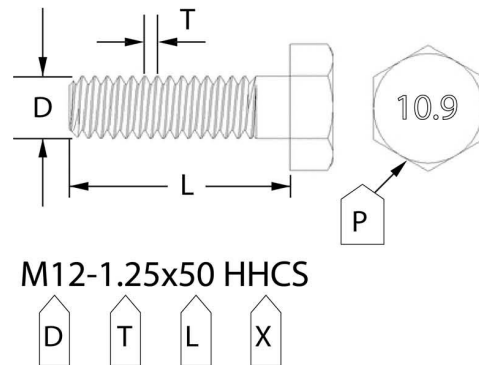
Bolt Torque Specifications

Use this only as a guide for hardware without a called out torque specification in the instruction manual.

Bolt Torque and ID						
Decimal System			Metric System			
<i>All Torques in Ft. Lbs. Maximums</i>						
Bolt Size	Grade 5	Grade 8	Bolt Size	Class 9.8	Class 10.9	Class 12.9
5/16	15	20	M6	5	9	12
3/8	30	45	M8	18	23	27
7/16	45	60	M10	32	45	50
1/2	65	90	M12	55	75	90
9/16	95	130	M14	85	120	145
5/8	135	175	M16	130	165	210
3/4	185	280	M18	170	240	290



G= Grade (Bolt Strength)
 D= Nominal Diameter (Inches)
 T= Thread Count (Threads per Inch)
 L= Length (Inches)
 X= Description (Hex Head Cap Screw)



P= Property Class (Bolt Strength)
 D= Nominal Diameter (Millimeters)
 T= Thread Pitch (Thread Width, mm)
 L= Length (Millimeters)
 X= Description (Hex Head Cap Screw)



For Technical Support / Warranty Information please call 1-800-776-0767
 Smittybilt, 400 W Artesia, Compton, CA 90220

Notes and Disclaimers

Product cleaning and maintenance instructions

Stainless Steel Finish – Aluminum polish may be used to polish small scratches and scuffs on the finish. Mild soap, window or glass cleaner may be used to clean the finish. Dual state powder coat finish – Mild soap, window or glass cleaner may be used to clean the finish. In order to protect the finish, you may wax your product on a regular basis with pure carnauba automotive wax. Do not use any types of soap, polish or wax that contains abrasive that could damage the finish. Textured coated finishes should be cleaned with a mild soap on a damp sponge. Do not apply polish or wax that requires to be removed by means of buffing. This type of wax is commonly used at car wash facilities. Chrome Finish – Mild soap, window or glass cleaner may be used to clean the finish. In order to protect the finish, you should wax your product on a regular basis with pure carnauba automotive wax. Do not use any types of soap, polish or wax that contains abrasive that could damage the finish.

SMITTYBILT ADVANTAGE WARRANTY

Limited-Lifetime Structural Warranty

5-Year Limited Finish Warranty

Smittybilt Automotive Products, LLC (SAP) warrants to the original purchaser that (a) the physical components (e.g., metal components, welds, etc.) of any SAP **Fridge Slide** will be free of defects in material and workmanship for the lifetime of the product; and free of finish defects for a duration of 5-years from the date of purchase of the fridge slide. This warranty applies only to the original purchaser of the fridge slide and is non-transferable. To obtain any warranty service, you must provide SAP with a proof of purchase and date of purchase that is acceptable to SAP, such as a copy of your purchase receipt.

This warranty does not cover labor of part replacement of the fridge slide. SAP will, at its sole discretion, provide replacement part(s) for a defective fridge slide or component, provided this is done within the warranty period. To request assistance under warranty, one must call or email using the phone number or email at the bottom of this page. This warranty does not apply (1) wearable components; or (2) if the fridge slide has been damaged, including, but not limited to: abuse, misuse, collision, modification, misapplication, improper installation, or improper service. This warranty is void if any SAP serial number has been removed or defaced; or if fridge slide is used for any commercial, industrial, or rental applications. This warranty only applies to Fridge Slides bought, sold, and used within the United States or Canada unless otherwise specifically agreed in writing by SAP.

THE WARRANTY SET FORTH ABOVE IS THE ONLY WARRANTY. THERE ARE NO OTHER WARRANTIES, EXPRESSED OR IMPLIED, INCLUDING BUT NOT LIMITED TO IMPLIED WARRANTIES OF MERCHANTABILITY OR FITNESS FOR A PARTICULAR PURPOSE. ANY IMPLIED WARRANTY WHICH BY LAW MAY NOT BE EXCLUDED IS LIMITED TO A DURATION OF ONE (1) YEAR FROM THE DATE OF ORIGINAL RETAIL PURCHASE OF THE PRODUCT. No SAP dealer, agent, or employee is authorized to make any modification, extension or addition to this warranty. SAP SHALL NOT BE LIABLE FOR SPECIAL, INDIRECT, INCIDENTAL OR CONSEQUENTIAL DAMAGES (INCLUDING, BUT NOT LIMITED TO, LOST PROFITS, DOWNTIME OR LOSS OF USE) UNDER ANY LEGAL THEORY, EVEN IF SAP WAS ADVISED OF THE POSSIBILITY OF SUCH DAMAGES. Some states do not allow the exclusion of implied warranties or the exclusion or limitation of liability for incidental or consequential damages, or limitations on how long an implied warranty lasts, so the above limitation or exclusion may not apply to you. This Warranty gives you specific legal rights. You may also have other rights that vary from state to state. SAP reserves the right to change product design without notice. In situations in which SAP has changed a product design, SAP shall have no obligation to upgrade or otherwise modify previously manufactured products. For warranty inquiries contact SAP at:

Smittybilt Automotive Products, LLC

Customer Service Department

Call 1-800-776-0767 or Email info@smittybilt.com



WARNING: Cancer and Reproductive Harm
www.P65Warnings.ca.gov



For Technical Support / Warranty Information please call 1-800-776-0767
Smittybilt, 400 W Artesia, Compton, CA 90220