

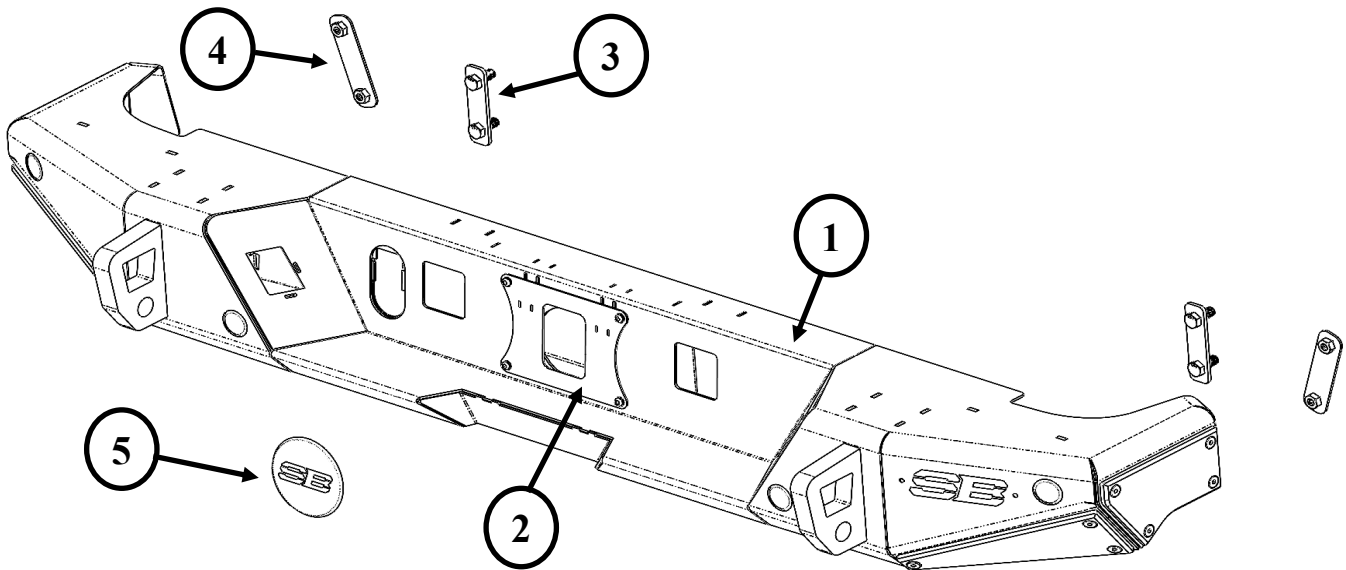


Installation Instructions:

(Part # SB79858)
 JT Gen 2 Rear Bumper Installation
 JEEP Gladiator 20+

NOTE: Carefully read entire instructions thoroughly before attempting to install this part.

NOTE: You will need to purchase OE Rubicon JL backup sensor sockets and retainers from your local dealership,



Parts Included	Qty	ID
419TU102 BUMPER SHELL	1	1
419AA300 LICENSE PLATE MOUNT	1	2
419AA400 WELD BOLT PLATE	2	3
419AA500 ROCK SLIDER NUT PLATE	2	4
419AA111 SB LOGO BACKING PLATE	1	
9750K450 STORAGE CUBBY PLUG	1	5
SB79858-03 HARDWARE PACK	1	
M8(1.25)X25MM FHSCS GR8.8 BZNC	14	
M6 HEX NUT	2	
M12 NYLOCK NUT	4	
M12 FLAT WASHERS	4	
M12 PLASTIC RETAINING CLIP	4	
M10(1.5)X25MM HEX BOLT GR10.9	4	
M10 FLAT WASHER	4	
M10 SPLIT LOCK WASHER	4	
M6(1.0)X 10MM BUTTON HEAD SOCKET SCREW	4	

For Technical Support/Warranty Information please call 310-762-9944



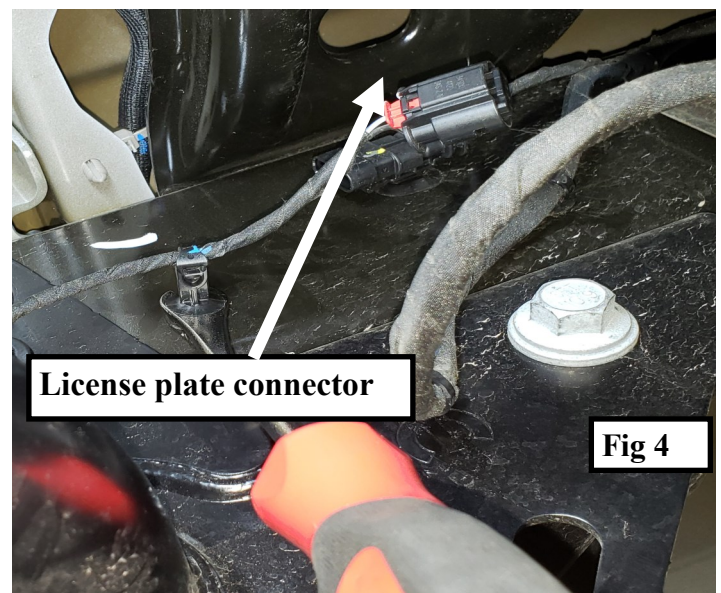
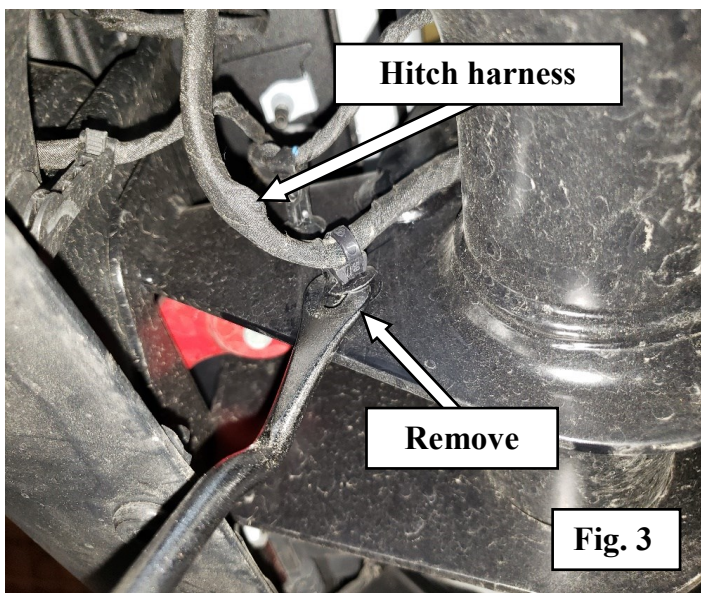
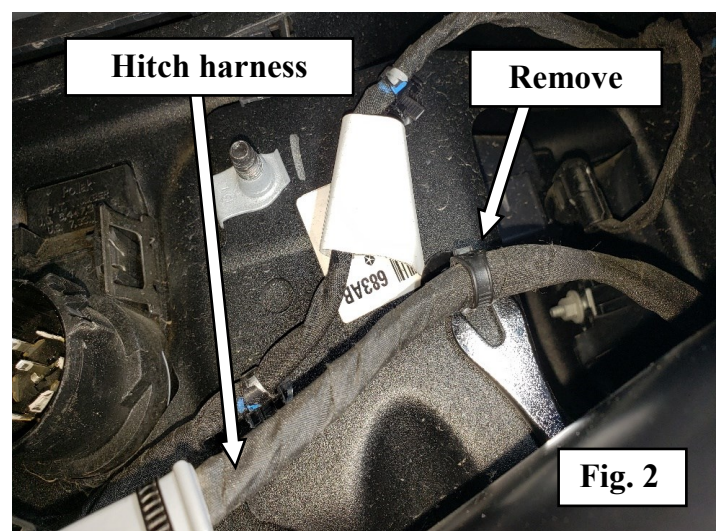
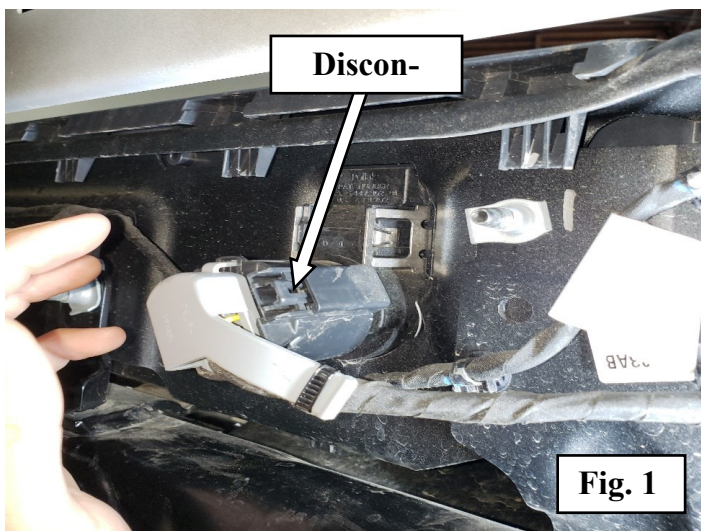
Installation Instructions:

(Part # SB79858)
 JT Gen 2 Rear Bumper Installation
 JEEP Gladiator 20+

NOTE: Park vehicle on a flat level surface. Apply parking brake and chock all four wheels.

INSTALLATION:

Step 1: Starting on the Rear driver side, Disconnect the Hitch wire harness connector from rear bumper (Fig. 1). Disconnect the license plate light connector and remove cable ties from frame (Fig. 2, 3 & 4).



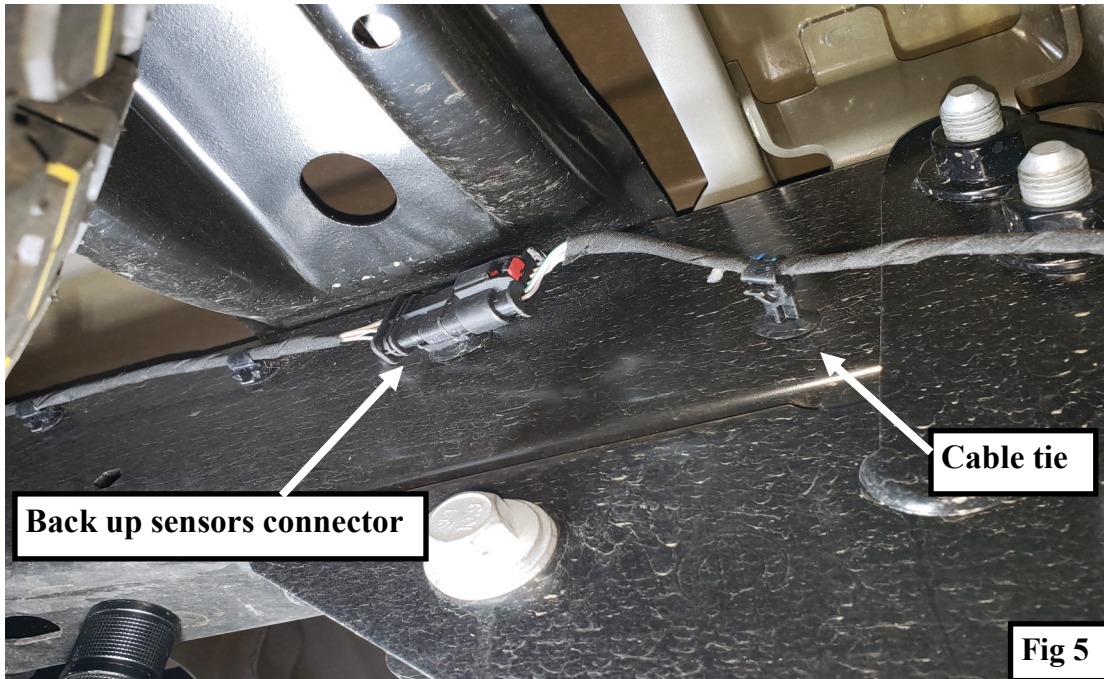
For Technical Support/Warranty Information please call 310-762-9944

Smittybilt, 400 W Artesia, Compton, CA 90220

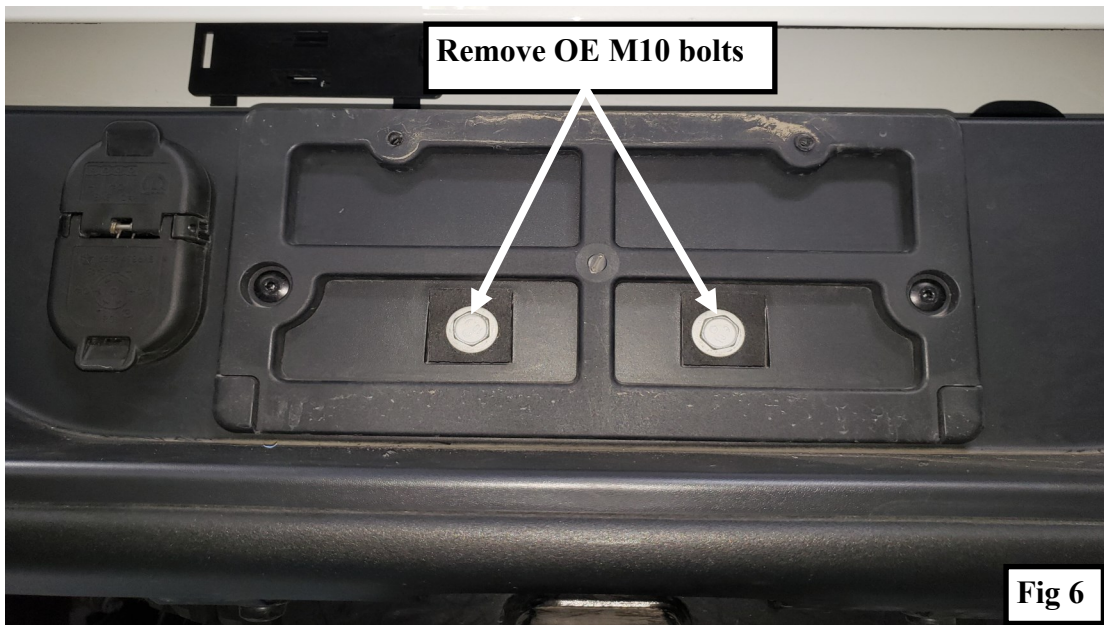


Installation Instructions: (Part # SB79858) JT Gen 2 Rear Bumper Installation JEEP Gladiator 20+

Step 2: If equipped with Back up sensors disconnect wiring harness from passenger side and remove cable tie from frame (**Fig. 5**).



Step 3: Remove license plate and unscrew (2) OE M10 bolts See (**Fig 6**).



For Technical Support/Warranty Information please call 310-762-9944



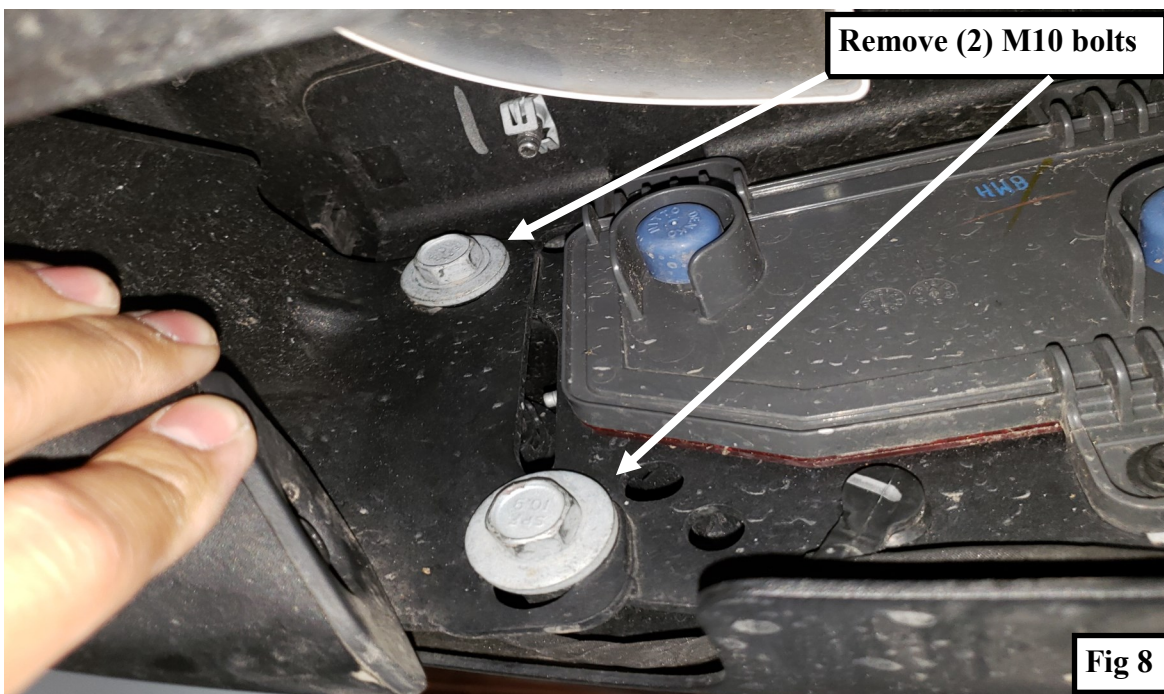
Installation Instructions: (Part # SB79858) JT Gen 2 Rear Bumper Installation JEEP Gladiator 20+

Step 4: Remove (2) T50 torx head bolts connecting the lower center section of the rear bumper to the OE hitch See (Fig 7).



Note: If your vehicle is equipped with OE bed rock rail guards continue on **step 5**
If your vehicle is not equipped with OE bed rock rail guards continue on **step 6**

Step 5: Remove (2) M10 Bolts from each inside corner of rear bumper See (Fig 8).



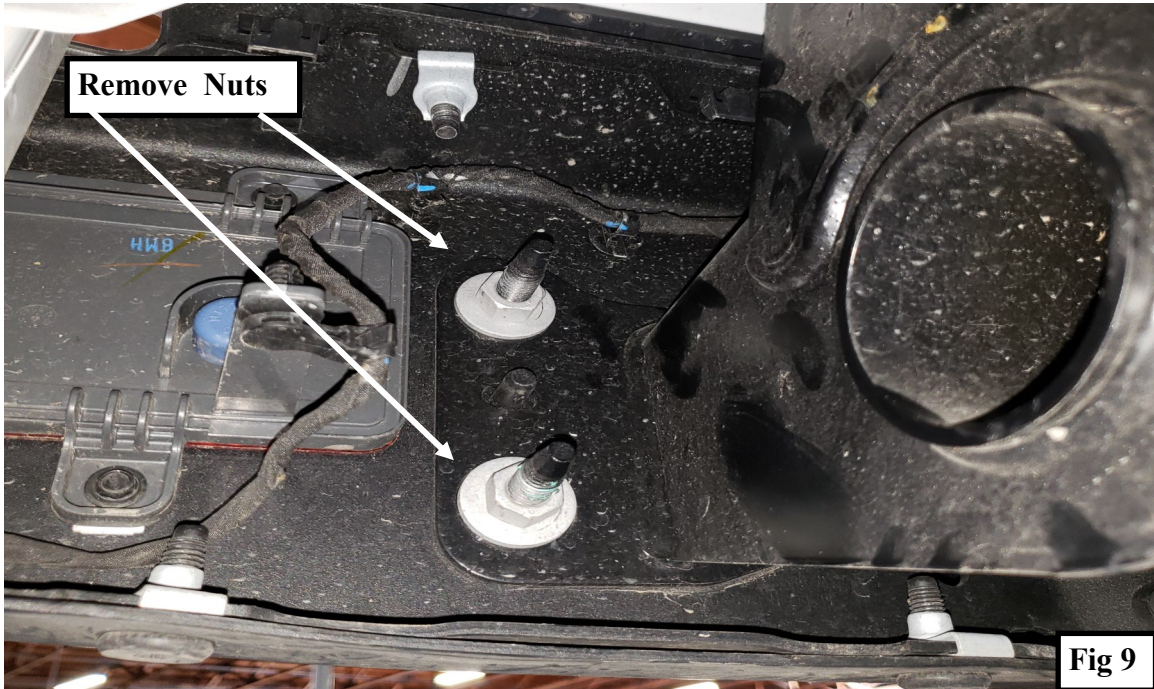
For Technical Support/Warranty Information please call 310-762-9944

Smittybilt, 400 W Artesia, Compton, CA 90220

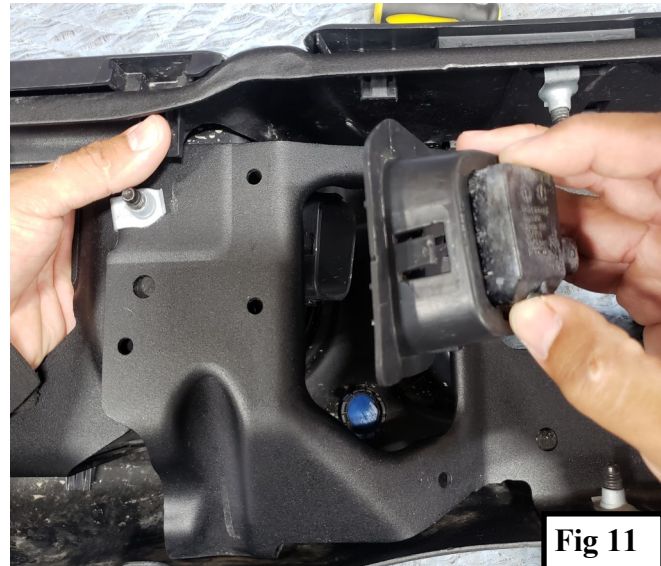


Installation Instructions: (Part # SB79858) JT Gen 2 Rear Bumper Installation JEEP Gladiator 20+

Step 6: Remove (2) OE nuts per side securing the rear bumper to the frame rails And Carefully remove the bumper from vehicle See (Fig 9).



Step 7: Remove license plate light from OE bumper by prying three clips from the license plate light bracket then pull the light bezel from the front of the bumper. See (Fig 10,11)



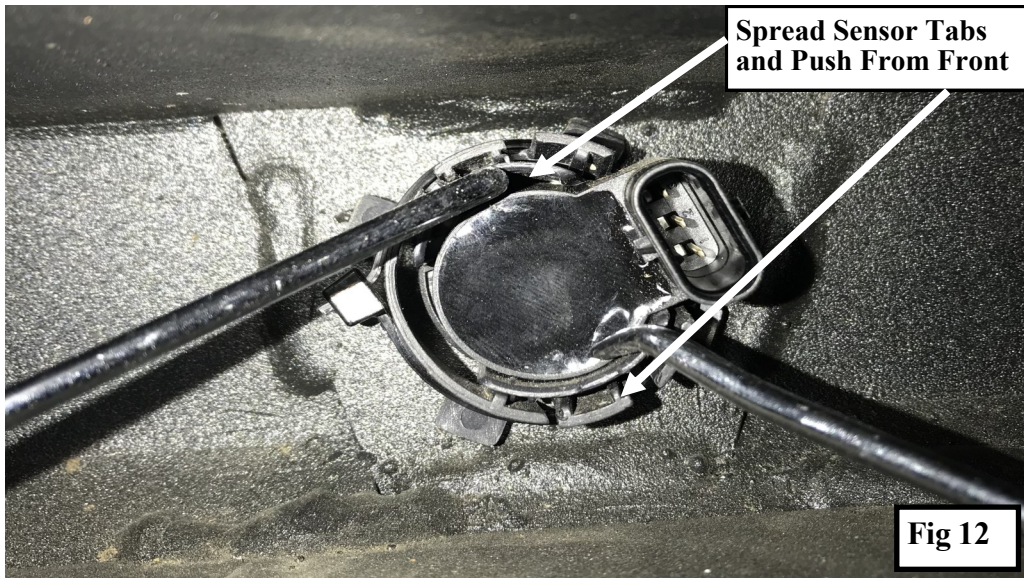
For Technical Support/Warranty Information please call 310-762-9944

Smittybilt, 400 W Artesia, Compton, CA 90220



Installation Instructions: (Part # SB79858) JT Gen 2 Rear Bumper Installation JEEP Gladiator 20+

Step 8: Unplug the OE wiring harness from the OE backup sensors and remove the OE back-up sensors by spreading the back of the sockets, where clipped over the sensor tabs, while pushing the sensors out from the front. (Fig 12)



NOTE: Be sure to note the orientation of the back-up sensor retainers in the OE bumper prior to removal for reinstallation.

Step 9: Install the OE back-up sensor sockets into the mounting holes on the rear bumper See (Fig 13)



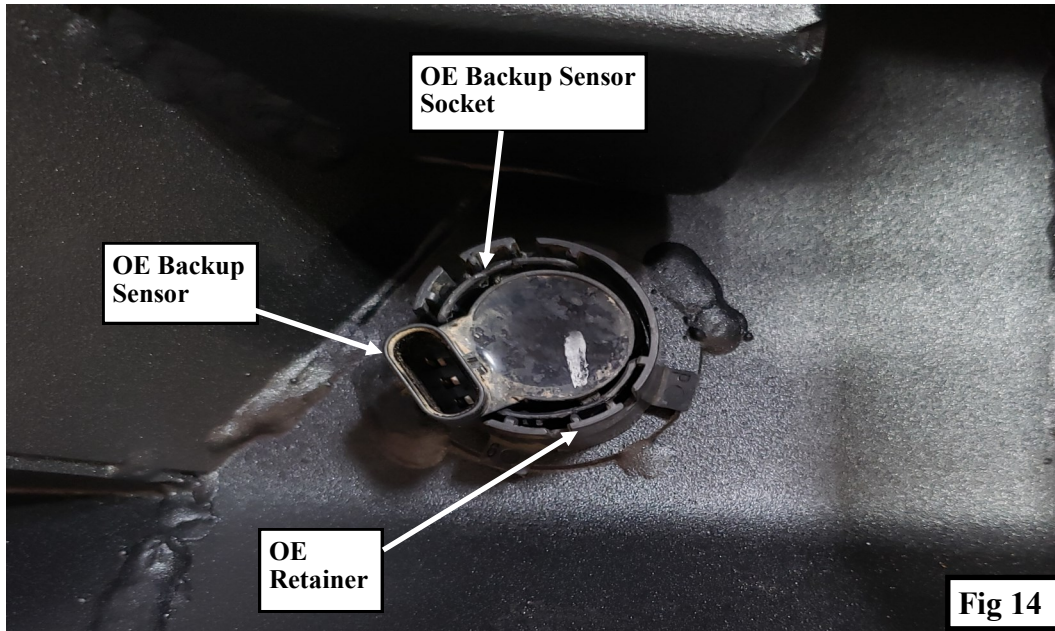
NOTE: For vehicles without back-up sensors, install block off plugs provided with the bumper, into the JT Gen 2 bumper instead.

For Technical Support/Warranty Information please call 310-762-9944

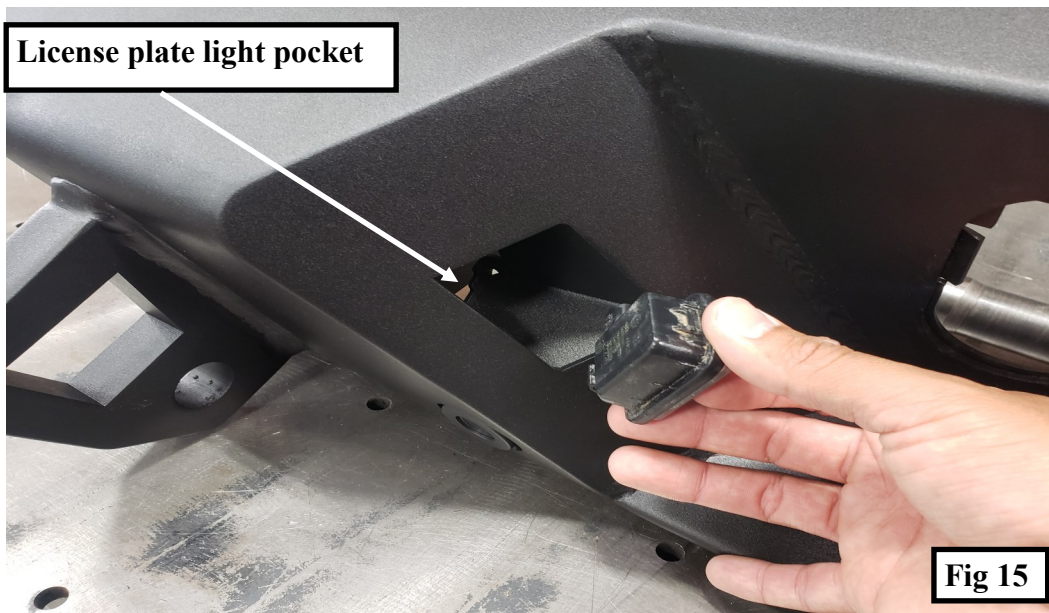


Installation Instructions: (Part # SB79858) JT Gen 2 Rear Bumper Installation JEEP Gladiator 20+

Step 10: Install the previously removed OE back-up sensors into the OE backup sensor sockets, using the OE retainers, according to their original orientation in the OE bumper. See (Fig 14)



Step 11: Install the previously remove license plate light to your new JT Gen 2 rear bumper by sliding the light trough the license plate light pocket. See (Fig 15)



For Technical Support/Warranty Information please call 310-762-9944



Installation Instructions: (Part # SB79858) JT Gen 2 Rear Bumper Installation JEEP Gladiator 20+

Step 12: Remove the trailer connector from the OE Bumper by squeezing the two metal clips and pushing outwards. See (Fig 16)



Step 13: Install the trailer connector to the JT Gen2 Bumper by pushing the trailer connector inwards through the trailer connector bracket located next to the license plate bracket. See (Fig 17)



For Technical Support/Warranty Information please call 310-762-9944



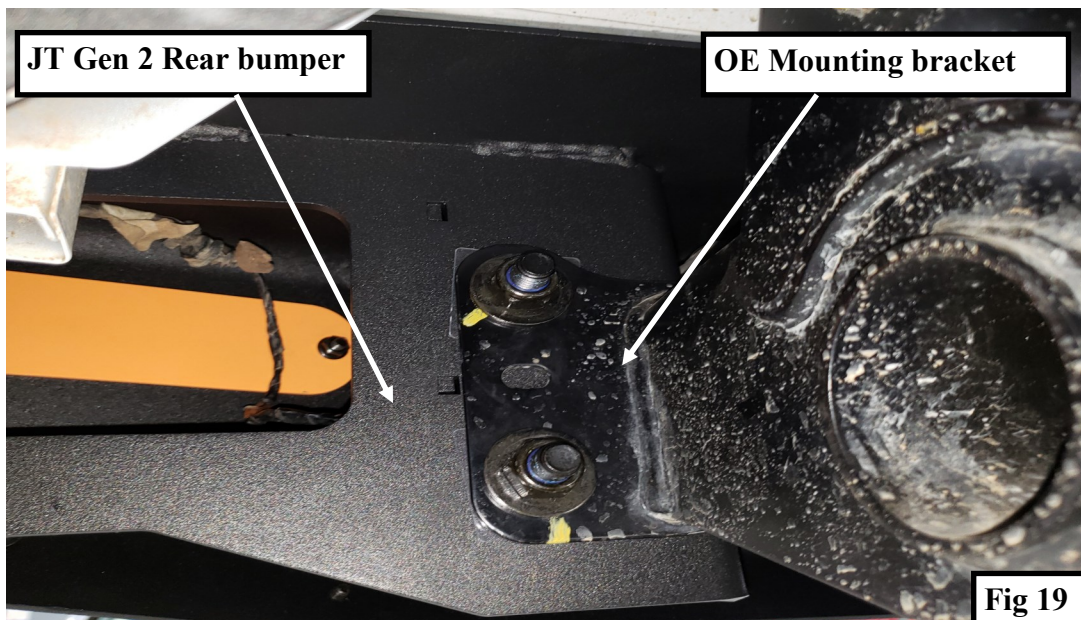
Installation Instructions: (Part # SB79858) JT Gen 2 Rear Bumper Installation JEEP Gladiator 20+

Step 14: Install the bolt plate to your new JT Gen 2 bumper using the plastic retainers
See (Fig 18)



NOTE: This step might require 2 people

Step 15: Carefully raise the rear bumper against the outer mounting brackets and align the mounting holes. Secure the rear bumper to the outer frame rails using the bolts. Leave the bolts loose at this time. See (Fig 19)



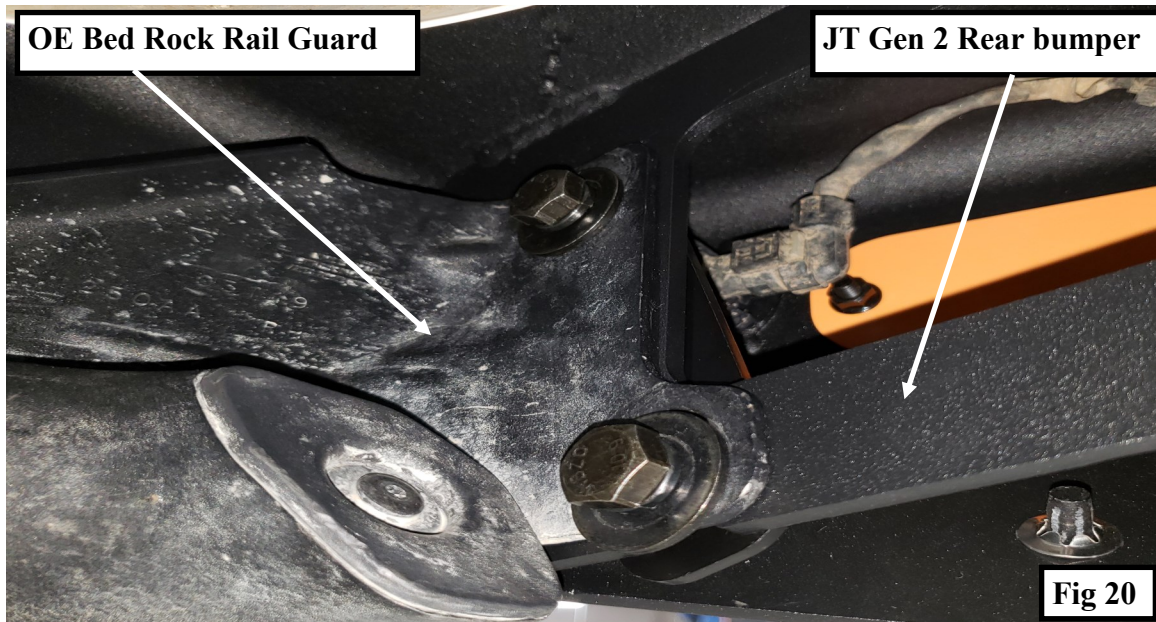
For Technical Support/Warranty Information please call 310-762-9944



Installation Instructions: (Part # SB79858) JT Gen 2 Rear Bumper Installation JEEP Gladiator 20+

Note: If your vehicle is equipped with OE bed rock rail guards continue on **step 16**
If your vehicle is not equipped with OE bed rock rail guards continue on **step 17**

Step 16: Insert the nut plates on the back corners of the rear bumper to secure the bumper to the OE bed rock rail guards using the hardware provided with the bumper. Leave the bolts loose at this time. See (Fig 20)



Step 17: Alling your rear bumper and tight your new JT Gen 2 rear bumper.
Torque all hardware according to manufacturer's specifications or chart on page 11.

Step 18: Installation is now complete See (Fig 21)



For Technical Support/Warranty Information please call 310-762-9944



Installation Instructions:

(Part # SB79858)
JT Gen 2 Rear Bumper Installation
JEEP Gladiator 20+

Use this only as a guide for hardware without a called out torque specification in the instruction manual.

Bolt Torque and ID						
Decimal System			Metric System			
All Torques in Ft. Lbs. Maximums						
Bolt Size	Grade 5	Grade 8	Bolt Size	Class 9.8	Class 10.9	Class 12.9
5/16	15	20	M6	5	9	12
3/8	30	45	M8	18	23	27
7/16	45	60	M10	32	45	50
1/2	65	90	M12	55	75	90
9/16	95	130	M14	85	120	145
5/8	135	175	M16	130	165	210
3/4	185	280	M18	170	240	290

1/2-13x1.75 HHCS **Grade 5** **Grade 8**
 (No. of Marks + 2)

D T L X

M12-1.25x50 HHCS

D T L X

G = Grade (Bolt Strength) P = Property Class (Bolt Strength)

D = Nominal Diameter (Inches) D = Nominal Diameter (Millimeters)

T = Thread Count (Threads per Inch) T = Thread Pitch (Thread Width, mm)

L = Length (Inches) L = Length (Millimeters)

X = Description (Hex Head Cap Screw) X = Description (Hex Head Cap Screw)

For Technical Support/Warranty Information please call 310-762-9944



Installation Instructions:

(Part # SB79858)

JT Gen 2 Rear Bumper Installation

JEEP Gladiator 20+

Product cleaning and maintenance instructions

Stainless Steel Finish – Aluminum polish may be used to polish small scratches and scuffs on the finish. Mild soap, window or glass cleaner may be used to clean the finish. Dual state powder coat finish – Mild soap, window or glass cleaner may be used to clean the finish. In order to protect the finish, you may wax your product on a regular basis with pure carnauba automotive wax. Do not use any types of soap, polish or was that contains abrasive that could damage the finish. Textured coated finishes should be cleaned with a mild soap on a damp sponge. Do not apply polish or was that requires to be removed by means of buffing. This type of wax is commonly used at car wash facilities. Chrome Finish – Mild soap, window or glass cleaner may be used to clean the finish. In order to protect the finish, you should wax your product on a regular basis with pure carnauba automotive wax. Do not use any types of soap, polish or was that contains abrasive that could damage the finish.

Limited Warranties

Smittybilt's products are covered under the following limited warranties only. Note that the duration of the limited warranty differs according to the material and finish of the product purchased. Subject to the duration and conditions of the limited warranty stated below, Smittybilt warrants to the original retail purchaser that its products are free from defects in material and workmanship. All other warranties and representations express or implied, are hereby disclaimed, including fitness for merchantability and buyer's intended use or purpose. All parts are sold "AS IS" except for the limited warranties granted herein. Buyer assumes all risks as to the selection, suitability and performance of all goods and products selected. This limited warranty does not cover damage or impairment in any part due to misuse, improper installation, accident or contact with on-road or off-road hazards, product modification, improper or inadequate cleaning and/or maintenance. Smittybilt is not responsible for items damaged during shipping. This warranty is not transferable from the original buyer. For the original Buyer to be eligible for the limited warranty coverage, the Buyer must provide proof of purchase. Smittybilt strongly recommends returning the warranty registration card.

Customer's remedy hereunder shall be limited only to repair or replacement (at Smittybilt's option) of any defective part(s) returned to Smittybilt at customer's expense. The determination of whether or not a returned part is defective or subject to coverage under the limited warranties stated herein shall be made at Smittybilt's sole discretion.

To assure product quality, Smittybilt reserves the right to change product design, material, specification and finishes without prior notice to customers. This limited warranty gives you specific legal rights and you may also have other rights, which may vary from state to state. Some states do not allow limitations on how long an implied warranty lasts, so the above limitations may not apply as to you. Also, some states do not allow the exclusion or limitation of incidental or consequential damages, so the above limitations or exclusions may not apply to you. Smittybilt reserves the right to discontinue product lines and substitute products or provide other remedies than those listed in this limited warranty for those discontinued products.

Warning

Rollover and other types of vehicle accidents may result in serious injury or death to you, your passengers and others sharing the road. Smittybilt accessories are decorative and are not intended to reduce or avoid injury or damage in the event of an accident. The weight and location of Smittybilt accessories may affect your vehicles' handling, stability and performance, creating an increased risk of accident or rollover. Before installing any accessory, check state laws and assure that the accessory will not obscure any lights or interfere with proper operation on your vehicle's safety equipment. Consult your owner's manual and the Smittybilt instructions, or additional safety information. Smittybilt products, nor the warnings contained herein, are not a substitute for your safe driving. Don't drink and drive, always use seat belts and don't drive faster than conditions permit.

For Technical Support/Warranty Information please call 310-762-9944

Smittybilt, 400 W Artesia, Compton, CA 90220