

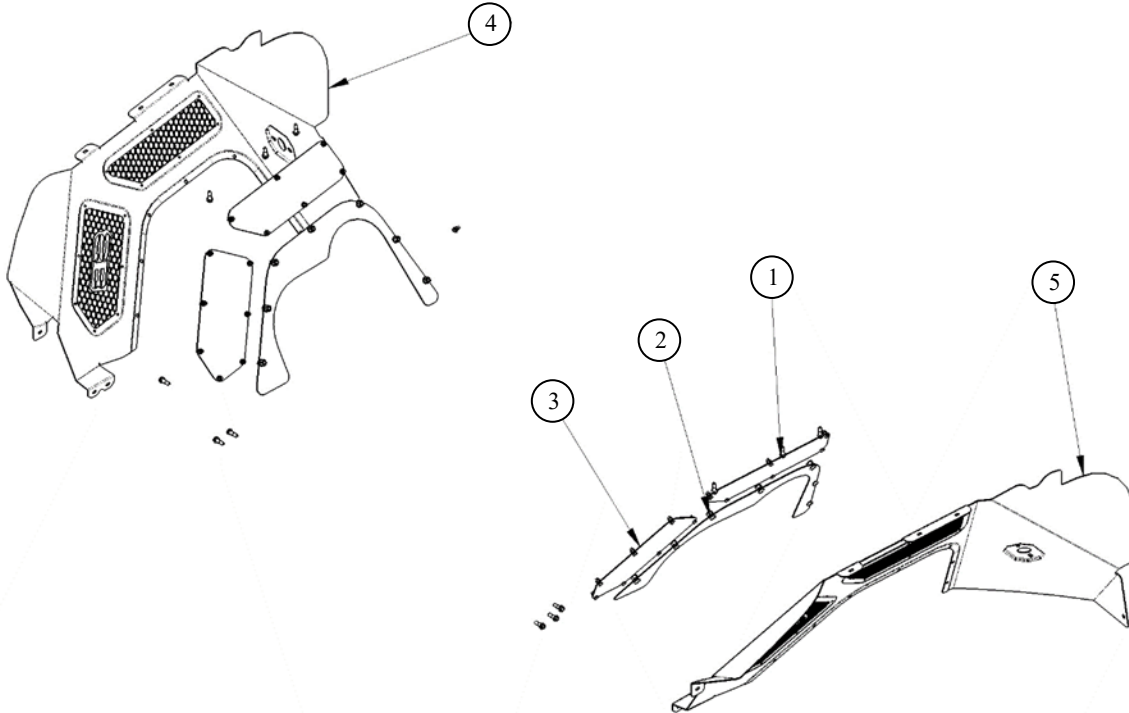


Installation Instructions:

(Part # SB77984)

XRC JL Inner Fender Liner
2018+ Jeep JL 2 and 4 door

NOTE: Carefully read entire instructions thoroughly before attempting to install this part.



Parts Included	Qty	ID
94-401TU082 INNER FENDER, DRV	1	1
94-401TU083 INNER FENDER, PASS	1	2
65-401TU085 FENDER VENT RH PLATE	2	3
65-401TU084 JL COILOVER INNER FENDER- BLANK INSERT	2	4
65-401TU086 FENDER VENT CENTER PLATE	2	5
90-779986-01 HARDWARE PACK	1	
M4.8(0.8) X 19MM SELF TAPPING SC 10.9 BLACK ZINC	12	
M4(0.7) X 12MM BHCS 10.9 BLACK ZINC	2	

Parts Included	Qty	ID
M4 FL WSHR DIN 125 ZINC	2	
M4(0.7) NYLOCK NUT 10.9 ZINC	2	
90-77986-02 HARDWARE PACK	1	
M6(1.0) X 12MM BHCS SSTL	14	
M6 FL WSHR DIN 125 SSTL	14	
M6(1.0) NYLOCK NUT 10.9 ZINC	14	
M4(0.7) X 12MM BHCS SSTL	26	
M4 FL WSHR DIN 125 SSTL	26	
M4(0.7) NYLOCK NUT 10.9 ZINC	2	

SUGGESTED TOOLS:

- General mechanic tool set
- Power drill
- Nut drivers
- 1/8" drill bit

For Technical Support/Warranty Information please call 310-762-9944



Installation Instructions:

(Part # SB77984)

XRC JL Inner Fender Liner
2018+ Jeep JL 2 and 4 door

INSTALLATION:

Step 1: Read through these instructions thoroughly prior to starting the install. Protect the powder coat of your new Smittybilt inner fender liners using masking tape along the mounting surfaces.

Step 2: Using the provided M4 button head screws, M4 washers, and M4 Nyloc nuts, install inner fender inserts into the upper vent holes. (Fig. B).



Step 3: Depending on what suspension you have installed on your vehicle, choose the lower insert that best fits your application (Fig. B). Install using the provided M6 button head screws, M6 washers, and M6 Nyloc nuts.



For Technical Support/Warranty Information please call 310-762-9944

Smittybilt, 400 W Artesia, Compton, CA 90220

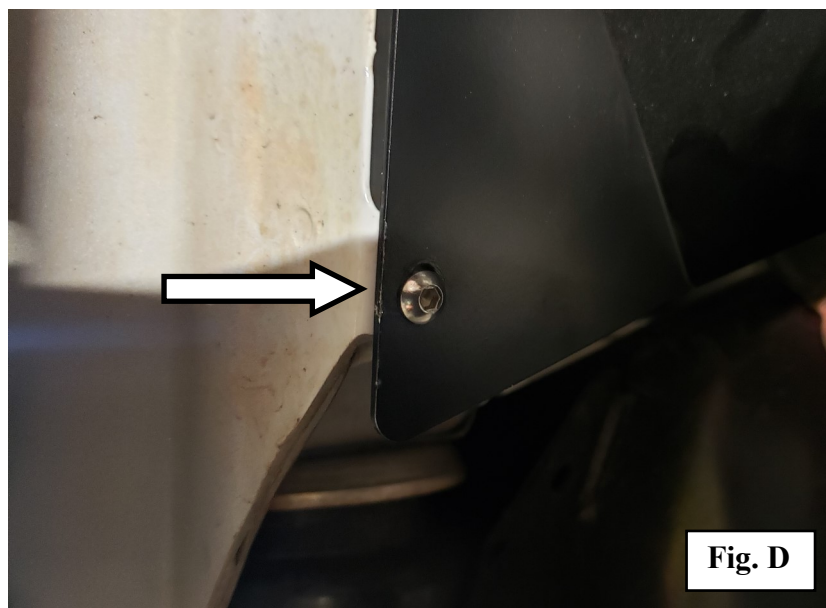


Installation Instructions:

(Part # SB77984)

*XRC JL Inner Fender Liner
2018+ Jeep JL 2 and 4 door*

- Step 4:** Remove the OEM inner fender liner, consult the owner's manual if necessary.
- Step 5:** With the help of a friend, hold the new passenger side inner fender liner in place. Make sure the top flanges are flat and parallel with the OE fender well structure (**Fig C**). The lower mounting flange should be aligned with the OE body tab. Temporarily install the provided **M4** button head screw, washer and nyloc nut (**Fig. D**).



For Technical Support/Warranty Information please call 310-762-9944



Installation Instructions:

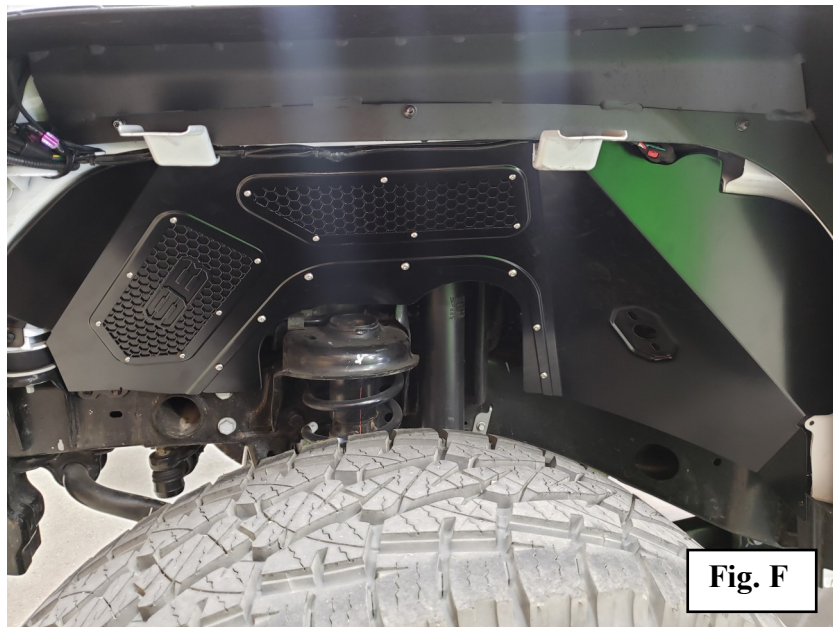
(Part # SB77984)

*XRC JL Inner Fender Liner
2018+ Jeep JL 2 and 4 door*

Step 6: Mark the center of each of the three mounting slots in the upper flange, carefully remove the new fender liner, center punch these marks, and drill 1/8" pilot holes (Fig. E).



Step 7: Reinstall the new inner fender liner. Using (3) self-tapping screws provided and a nut driver in the three previously drilled holes, secure the new fender liner in place (Fig. F).



For Technical Support/Warranty Information please call 310-762-9944

Smittybilt, 400 W Artesia, Compton, CA 90220



Installation Instructions:

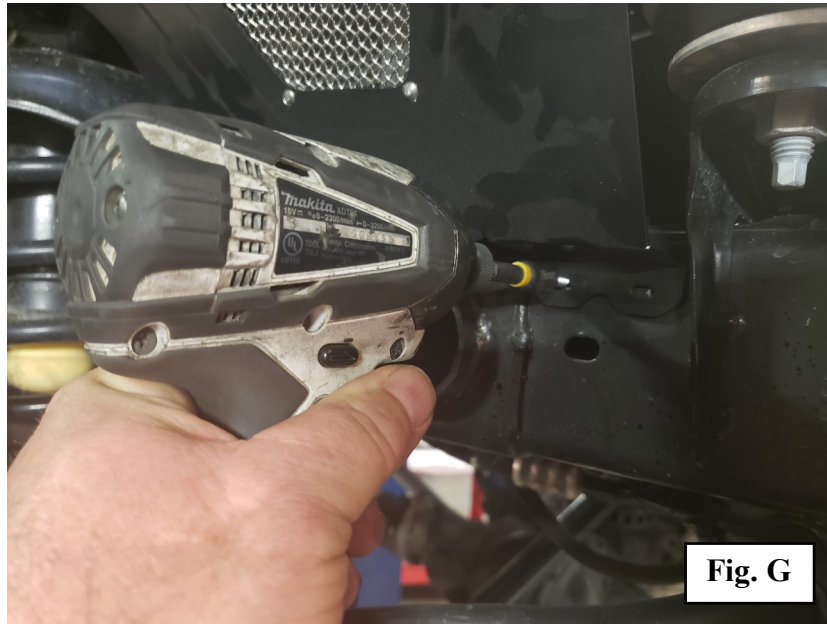
(Part # SB77984)

XRC JL Inner Fender Liner
2018+ Jeep JL 2 and 4 door

Step 8: Mark and drill the remaining (3) mounting points.

NOTE: *You may want to use extra masking tape to prevent scuffing or scratching.*

Step 9: Make sure the fender liner is adjusted correctly and install the remaining self-tapping screws (**Fig. G**).



Step 10: Uninstall the Smittybilt inner fender well, carefully remove the protective masking tape, and reinstall for a final time.

Step 11: Repeat steps 4-10 for the driver side.

Step 12: Congratulations! You have successfully installed your new Smittybilt product. Enjoy!

For Technical Support/Warranty Information please call 310-762-9944

Smittybilt, 400 W Artesia, Compton, CA 90220



Installation Instructions:

(Part # SB77984)

XRC JL Inner Fender Liner
2018+ Jeep JL 2 and 4 door

Use this only as a guide for hardware without a called out torque specification in the instruction manual.

Bolt Torque and ID						
Decimal System			Metric System			
All Torques in Ft. Lbs. Maximums						
Bolt Size	Grade 5	Grade 8	Bolt Size	Class 9.8	Class 10.9	Class 12.9
5/16	15	20	M6	5	9	12
3/8	30	45	M8	18	23	27
7/16	45	60	M10	32	45	50
1/2	65	90	M12	55	75	90
9/16	95	130	M14	85	120	145
5/8	135	175	M16	130	165	210
3/4	185	280	M18	170	240	290

1/2-13x1.75 HHCS

Grade 5 Grade 8
(No. of Marks + 2)

D T L X

G = Grade (Bolt Strength)
D = Nominal Diameter (Inches)
T = Thread Count (Threads per Inch)
L = Length (Inches)
X = Description (Hex Head Cap Screw)

M12-1.25x50 HHCS

D T L X

P = Property Class (Bolt Strength)
D = Nominal Diameter (Millimeters)
T = Thread Pitch (Thread Width, mm)
L = Length (Millimeters)
X = Description (Hex Head Cap Screw)

For Technical Support/Warranty Information please call 310-762-9944



Installation Instructions:

(Part # SB77984)
XRC JL Inner Fender Liner
2018+ Jeep JL 2 and 4 door

Product cleaning and maintenance instructions

Stainless Steel Finish – Aluminum polish may be used to polish small scratches and scuffs on the finish. Mild soap, window or glass cleaner may be used to clean the finish. Dual state powder coat finish – Mild soap, window or glass cleaner may be used to clean the finish. In order to protect the finish, you may wax your product on a regular basis with pure carnauba automotive wax. Do not use any types of soap, polish or was that contains abrasive that could damage the finish. Textured coated finishes should be cleaned with a mild soap on a damp sponge. Do not apply polish or was that requires to be removed by means of buffing. This type of wax is commonly used at car wash facilities. Chrome Finish – Mild soap, window or glass cleaner may be used to clean the finish. In order to protect the finish, you should wax your product on a regular basis with pure carnauba automotive wax. Do not use any types of soap, polish or was that contains abrasive that could damage the finish.

Limited Warranties

Smittybilt's products are covered under the following limited warranties only. Note that the duration of the limited warranty differs according to the material and finish of the product purchased. Subject to the duration and conditions of the limited warranty stated below, Smittybilt warrants to the original retail purchaser that its products are free from defects in material and workmanship. All other warranties and representations express or implied, are hereby disclaimed, including fitness for merchantability and buyer's intended use or purpose. All parts are sold "AS IS" except for the limited warranties granted herein. Buyer assumes all risks as to the selection, suitability and performance of all goods and products selected. This limited warranty does not cover damage or impairment in any part due to misuse, improper installation, accident or contact with on-road or off-road hazards, product modification, improper or inadequate cleaning and/or maintenance. Smittybilt is not responsible for items damaged during shipping. This warranty is not transferable from the original buyer. For the original Buyer to be eligible for the limited warranty coverage, the Buyer must provide proof of purchase. Smittybilt strongly recommends returning the warranty registration card.

Customer's remedy hereunder shall be limited only to repair or replacement (at Smittybilt's option) of any defective part(s) returned to Smittybilt at customer's expense. The determination of whether or not a returned part is defective or subject to coverage under the limited warranties stated herein shall be made at Smittybilt's sole discretion.

To assure product quality, Smittybilt reserves the right to change product design, material, specification and finishes without prior notice to customers. This limited warranty gives you specific legal rights and you may also have other rights, which may vary from state to state. Some states do not allow limitations on how long an implied warranty lasts, so the above limitations may not apply as to you. Also, some states do not allow the exclusion or limitation of incidental or consequential damages, so the above limitations or exclusions may not apply to you. Smittybilt reserves the right to discontinue product lines and substitute products or provide other remedies than those listed in this limited warranty for those discontinued products.

Warning

Rollover and other types of vehicle accidents may result in serious injury or death to you, your passengers and others sharing the road. Smittybilt accessories are decorative and are not intended to reduce or avoid injury or damage in the event of an accident. The weight and location of Smittybilt accessories may affect your vehicles' handling, stability and performance, creating an increased risk of accident or rollover. Before installing any accessory, check state laws and assure that the accessory will not obscure any lights or interfere with proper operation on your vehicle's safety equipment. Consult your owner's manual and the Smittybilt instructions, or additional safety information. Smittybilt products, nor the warnings contained herein, are not a substitute for your safe driving. Don't drink and drive, always use seat belts and don't drive faster than conditions permit.

For Technical Support/Warranty Information please call 310-762-9944

Smittybilt, 400 W Artesia, Compton, CA 90220