



**IF YOU'RE MISSING
HARDWARE OR
COMPONENTS OR IN
NEED OF TECHNICAL
ASSISTANCE CONTACT
SMITTYBILT
DIRECTLY AT
1-800-776-0767**

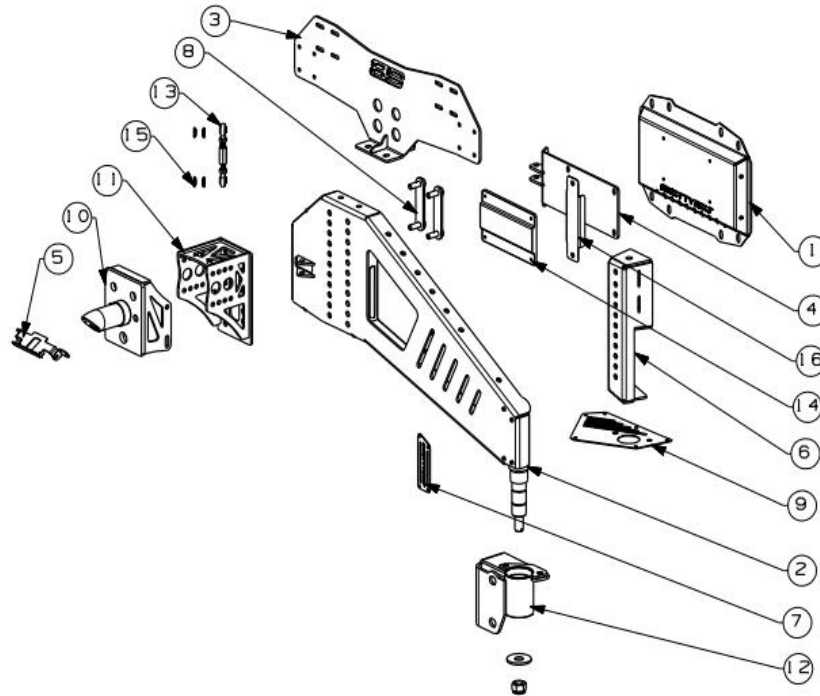
info@smittybilt.com



Installation Instructions:

(Part # SB77857)
2018+ Jeep JL Gen 3 Tire Carrier

NOTE : Carefully read entire instructions thoroughly before attempting to install this part.



Parts Included	Qty.	ID
84-401TU061 VENT COVER PLATE	1	1
84-401TU070 SWING ARM	1	2
84-401TU071 ROTOPAX MOUNT	1	3
84-401TU072 JOINT AND CATCH MOUNT	1	4
84-401TU073 3RD BRAKE LIGHT BRACKET	1	5
84-401TU076 HIGH LIFT JACK MOUNT	1	6
97-401TU077 LOGO PLATE	1	7
84-401TU078 BOLT PLATE	2	8
97-401TU079 SS PLATE, PASSENGER	1	9
84-401TU034 WHEEL MOUNT, ADJUSTABLE BRACKET	1	10
84-401TU033 WHEEL MOUNT, STATIONARY BRACKET	1	11
77857-01 TIRE CARRIER BEARING PIVOT	1	12
77857-02 HEIM JOINT	1	13
96-401TU068 BACK PLATE	1	14
35-401TU067 HIEM JOINT SPACER	4	15
96-401TU069 CONTACT PLATE	1	16

For Technical Support/Warranty Information please call 310-762-9944



Installation Instructions:

(Part # SB77857)
2018+ Jeep JL Gen 3 Tire Carrier

Parts Included	Qty.
90-77857-03 HARDWARE PACK HIEM JOINT	1
M12(1.75) X 50MM HEX SOC CAP SC GR 10.9 ZINC	2
M12 FL WSHR DIN 125 ZINC	4
M12(1.75) NYLOCK NUT GR10.9 ZINC	2
90-77857-04 HARDWARE PACK BACK PLATE	1
M6(1.0) X 18MM HEX SOC CAP SC GR 10.9 BLACK ZINC	4
M6 FL WSHR DIN 125 BLACK ZINC	4
M8(1.0) X 25MM HEX SOC CAP SC GR 10.9 BLACK ZINC	2
M8 FL WSHR DIN 125 ZINC	2
90-7743-03 HARDWARE PACK TIRE MOUNT	1
M10(1.25) X 30MM HEX SOC CAP SC GR 10.9 BLACK ZINC	4
M10 FL WSHR DIN 125 BLACK ZINC	8
M10 NYLOCK NUT GR10.9 BLACK ZINC	4
M12 FL WSHR DIN 125 BLACK ZINC	4
M12 NYLOCK NUT GR10.9 BLACK ZINC	4
90-77857-05 HARDWARE PACK BRAKE LIGHT MOUNT	1
M6(1.0) X 16MM BUTTON SOC CAP SC GR8.8 BLACK ZINC	2
M6 FL WSHR DIN 125 BLACK ZINC	4
M6(1.0) NYLOCK NUT GR 8.8 BLACK ZINC	2
90-77857-06 HARDWARE PACK JACK MOUNT	1
M12(1.25) X 30MM HEX SOC CAP SC GR 10.9 BLACK ZINC	2
M12 FL WSHR DIN 125 BLACK ZINC	2
90-77857-07 HARDWARE PACK PIVOT MOUNT	1
M10(1.25) X 30MM BUTTON SOC CAP SC SSTL	2
M10 FL WSHR DIN 125 ZINC	2
M10(1.25) NYLOCK NUT GR 10.9 ZINC	2
M14(1.5) X 35MM FLNG BOLT GR 10.9 ZINC	2
M14 FL WSHR DIN 125 ZINC	2

Parts Included	Qty.
90-77857-08 HARDWARE PACK PIVOT PIN	1
M20(2.5) NYLOCK NUT, GR 10.9 ZINC	1
M20 OVERSIZE FL WSHR DIN 125 ZINC	1
M2 COTTER PIN SSTL	1
90-77857-09 HARDWARE PACK BUMPER	1
M10(1.25) X 16MM BHCS GR 10.9 BLACK ZINC	2
90-77857-10 HARDWARE PACK ROTOPAX MOUNT	1
M12(1.75) X 30MM HEX SOC CAP SC GR 10.9 BLACK ZINC	4
M12(1.75) X 25MM HEX SOC CAP SC GR 10.9 BLACK ZINC	2
M12 FL WSHR DIN 125 BLACK ZINC	8
M12(1.75) NYLOCK NUT GR10.9 BLACK ZINC	4
90-77857-11 HARDWARE PACK LOGO PLATE	1
M6(1.0) X 8MM BUTTON SOC CAP SC SSTL	4
90-77857-12 HARDWARE PACK CABLE EXTENSIONS	1
3M BRAKE LIGHT CABLE EXTENSION LICENSE PLATE	1
2M X 12MM CABLE SLEEVE	1
1/2" (12MM) PUSH IN HOLE PLUG TAIL-GATE	2
6" (158MM) 18LB (80N) BLACK CABKE TIE	12
FASTENER MOUNT CABLE TIE	4
M4(0.7) X 10MM SELF TAPPING SCREW, BLACK ZINC	4
ANGLE BRACKETS(PAIR) FOR 3rd BRAKE LIGHT MOUNTING	2

Tools Required:

Metric combination wrench set

Metric Allen head set

Torx bit set

30mm open end wrench (or equivalent)

Metric socket wrench set

Plastic pry bar set

Torque wrench

Heat gun

For Technical Support/Warranty Information please call 310-762-9944

Smittybilt, 400 W. Artesia, Compton, CA 90220



Installation Instructions:

(Part # SB77857)
2018+ Jeep JL Gen 3 Tire Carrier

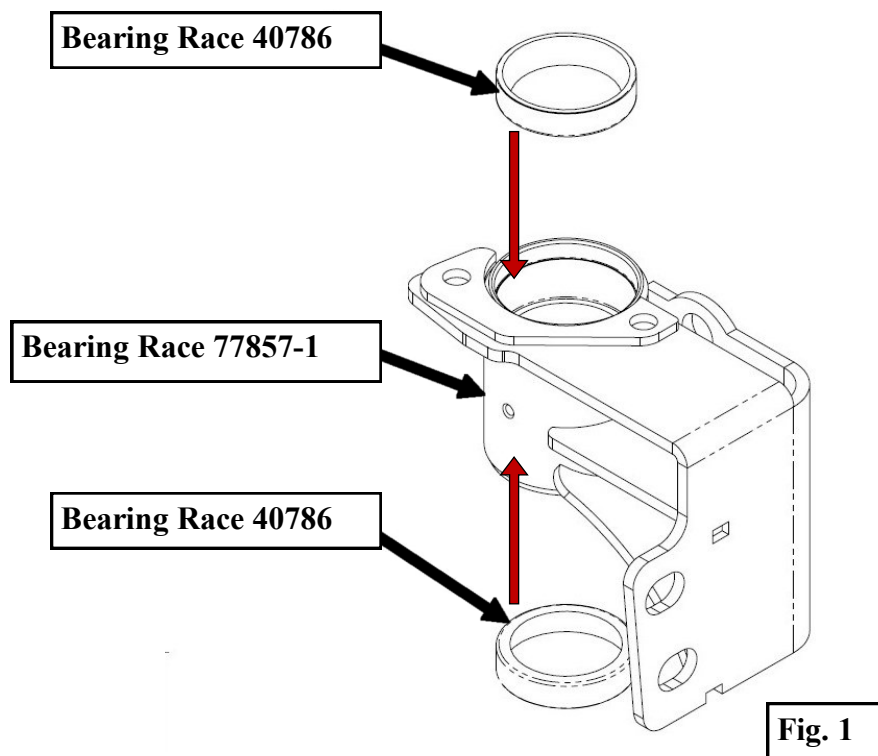
INSTALLATION:

NOTE: Carefully read through entire instructions before attempting to install this kit. This kit only works with Smittybilt XRC 77858 & SRC 77714 rear bumpers. Hi-Lift jack, Roto Packs and respective mounting kits, sold separately.

NOTE: Chock all four wheels and make sure parking brake is engaged before starting this install.

For steps 1-2, if you aren't familiar or don't have the proper tools for installing bearing assemblies, it is recommended that these steps be performed by a qualified mechanic.

Step 1 : Locate the Tire Carrier Bearing Pivot (77857-1) (Fig. 1). If the bearings, races, and seals were not already installed, locate (2 qty.) Bearing Race (40786). With the cones facing out, press the races into the Tire Carrier Pivot until fully seated (Fig. 1).



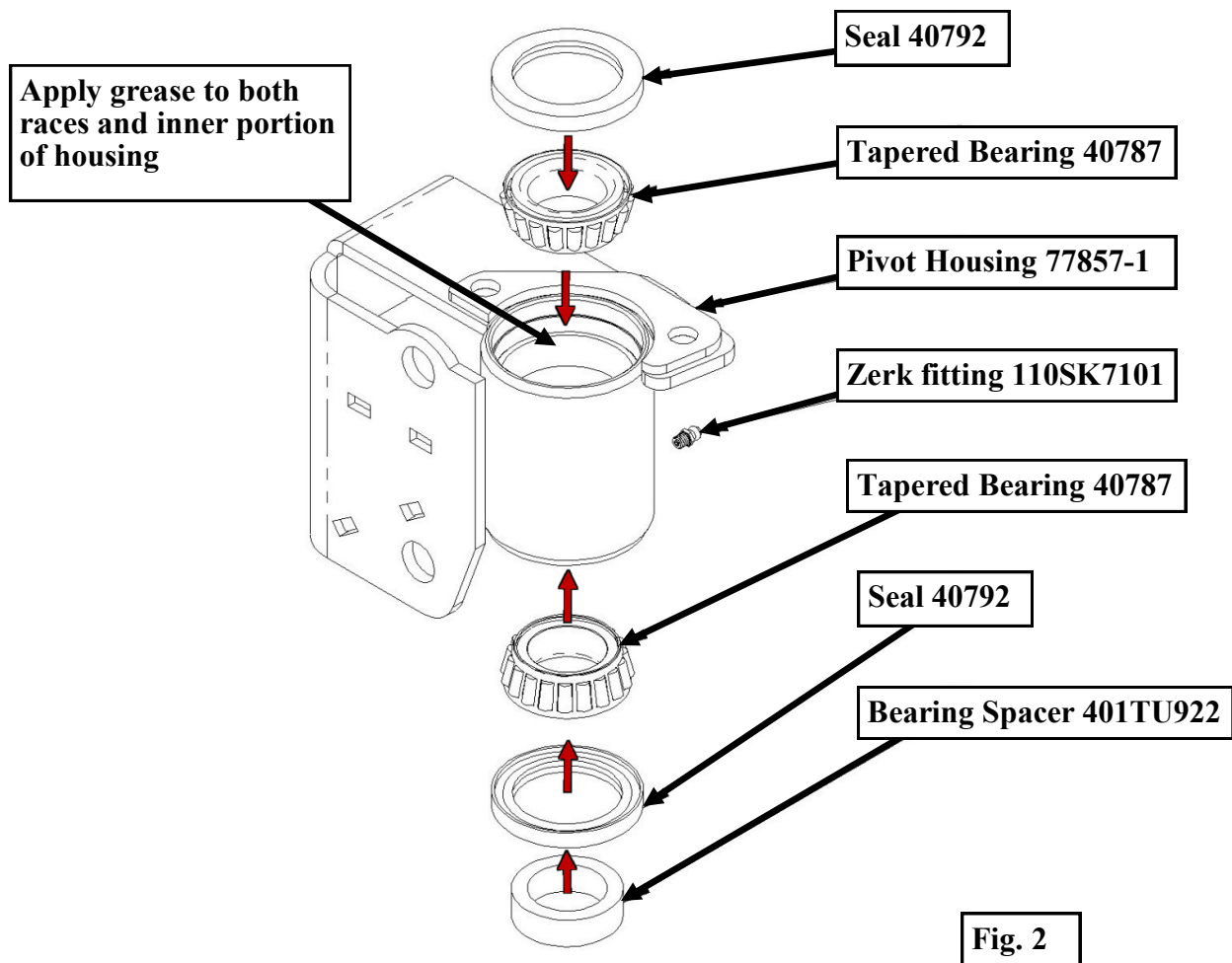
For Technical Support/Warranty Information please call 310-762-9944



Installation Instructions:

(Part # SB77857)
2018+ Jeep JL Gen 3 Tire Carrier

Step 2 : Locate and install **Zerk Fitting (110SK101)** in the side of the pivot housing, tighten just snug to 40 **in-lbs.** Locate (**2qty.**) **Tapered Roller Bearing (40787)** and fully pack them with a good quality grease (NGLI #2 Marine grade is recommended). Apply a liberal amount of grease to both (previously installed) races and inner portion of the pivot housing. Starting with either end of the Pivot Housing facing up, install a tapered bearing then carefully press in **Grease Seal (40792)** until seated. Flip the housing over and repeat this process. Locate **Bearing Spacer (401TU922)**, lightly coat all sides with bearing grease and install it in the lower seal so that it rests against the lower bearing. (**Fig. 2**) Set this assembly aside protected from dirt and the elements.



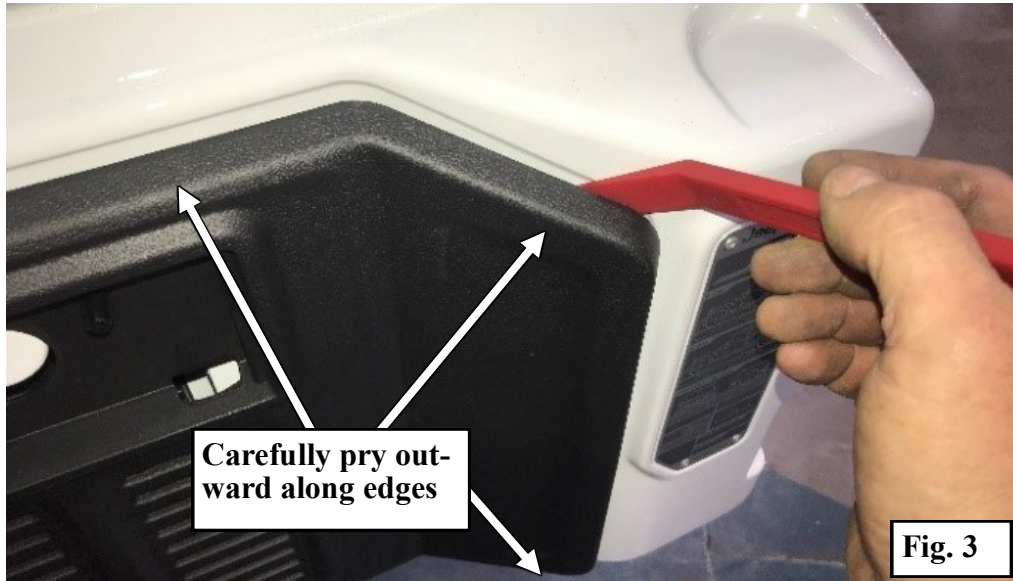
For Technical Support/Warranty Information please call 310-762-9944



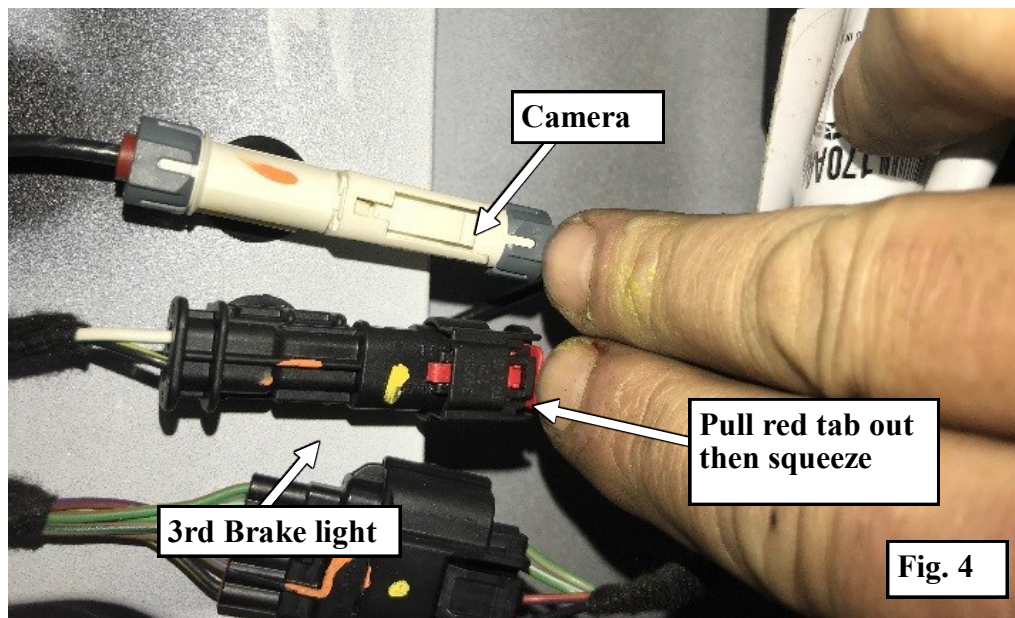
Installation Instructions:

(Part # SB77857)
2018+ Jeep JL Gen 3 Tire Carrier

Step 3 : Remove the spare tire from OE tire carrier. consult your owner's manual as necessary. Open the tailgate, starting on the latch side, with a plastic pry bar, carefully remove the rear interior panel (**Fig. 3**) and set aside.



Step 4 : Once the panel is removed, carefully disconnect 3rd brake light (black connector in middle) by pulling the red locking tab outwards and then squeezing the retaining tab while pulling the two halves of the connector apart. The camera wiring harness (white connector on top) doesn't have a locking tab and is disconnected the same way. **Do not pull directly on wiring (Fig. 4).**

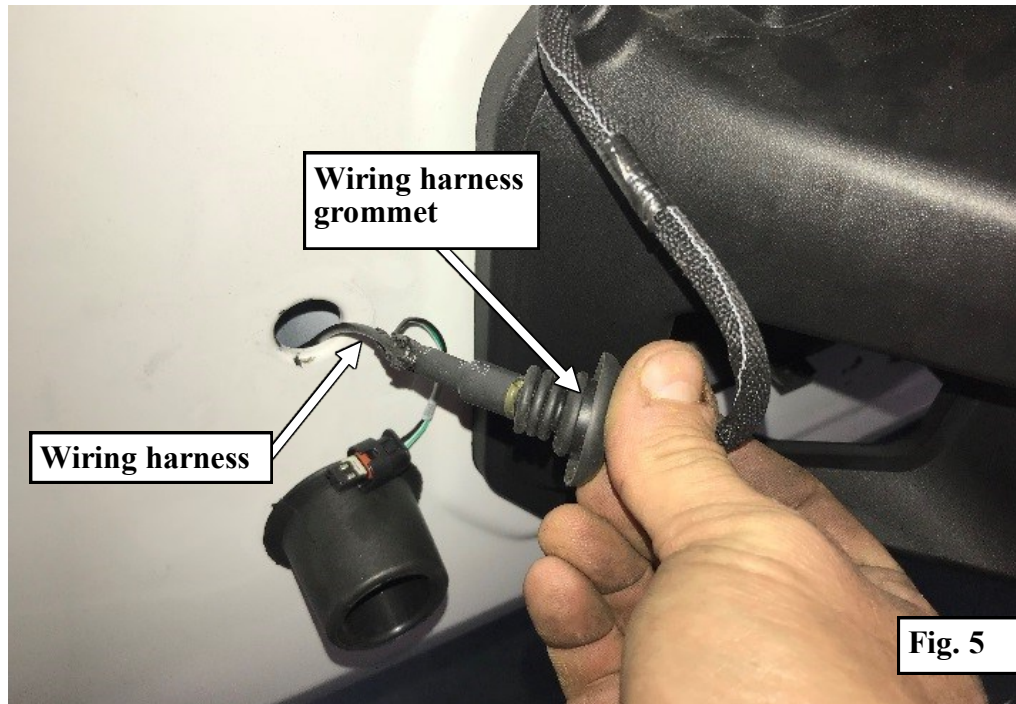


For Technical Support/Warranty Information please call 310-762-9944



Installation Instructions: (Part # SB77857) 2018+ Jeep JL Gen 3 Tire Carrier

Step 5 : On the outside of the tailgate, gently remove the wiring grommet. Feed the disconnected wiring harness through the hole on the tailgate. Use a trim tool to gently pry the grommet if needed (**Fig. 5**).



Note : *REMOVE WIRING HARNESS COMPLETELY FROM THE OE TAILGATE, THROUGH THE EXTERIOR HOLE. FAILURE TO DO SO MAY RESULT IN DAMAGE TO THE WIRING HARNESS.*

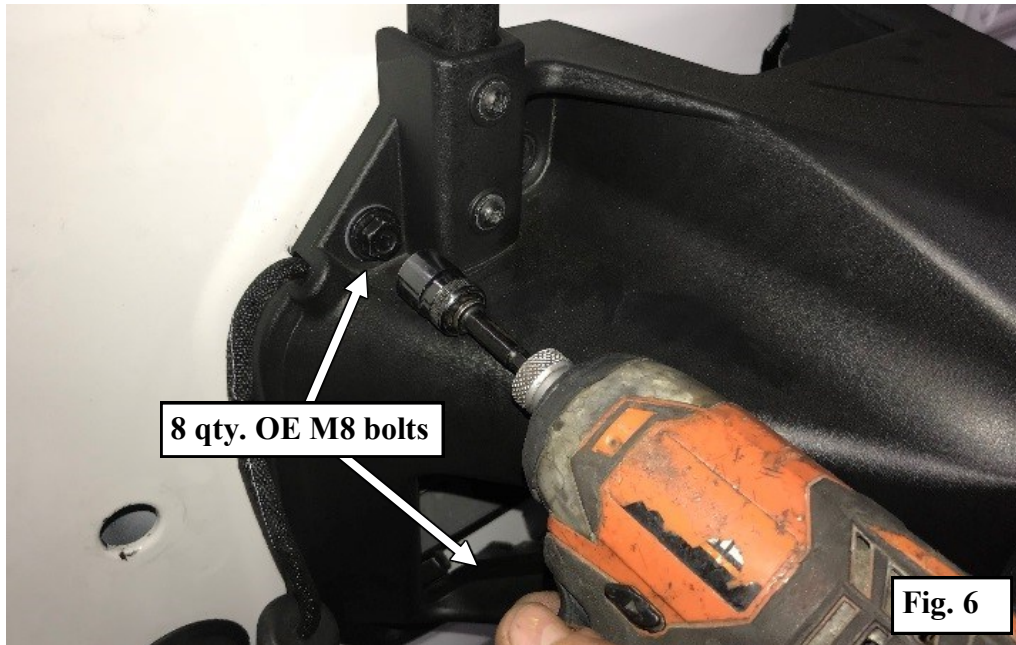
For Technical Support/Warranty Information please call 310-762-9944

Smittybilt, 400 W. Artesia, Compton, CA 90220

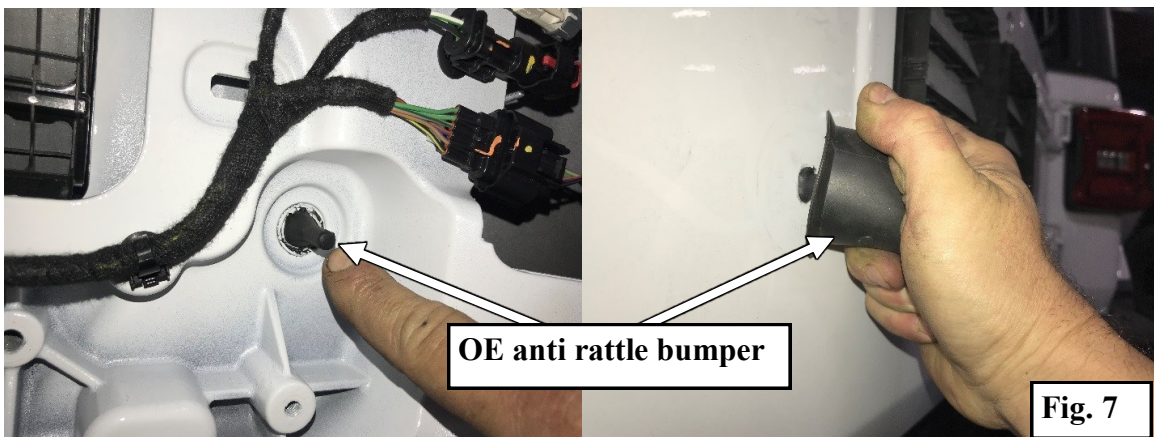


Installation Instructions: (Part # SB77857) 2018+ Jeep JL Gen 3 Tire Carrier

Step 6 : Use an 13mm socket to remove the (8 qty.) OE M8 bolts securing the tire carrier to the tailgate. (Fig. 6) Save the M8 hardware for reinstallation.



Step 7 : Remove the two (2) Rubber anti-rattle bumpers from the tailgate by pulling the nipple on the inside of the tailgate (Fig. 7) whilst pulling and twisting harder on the outside.

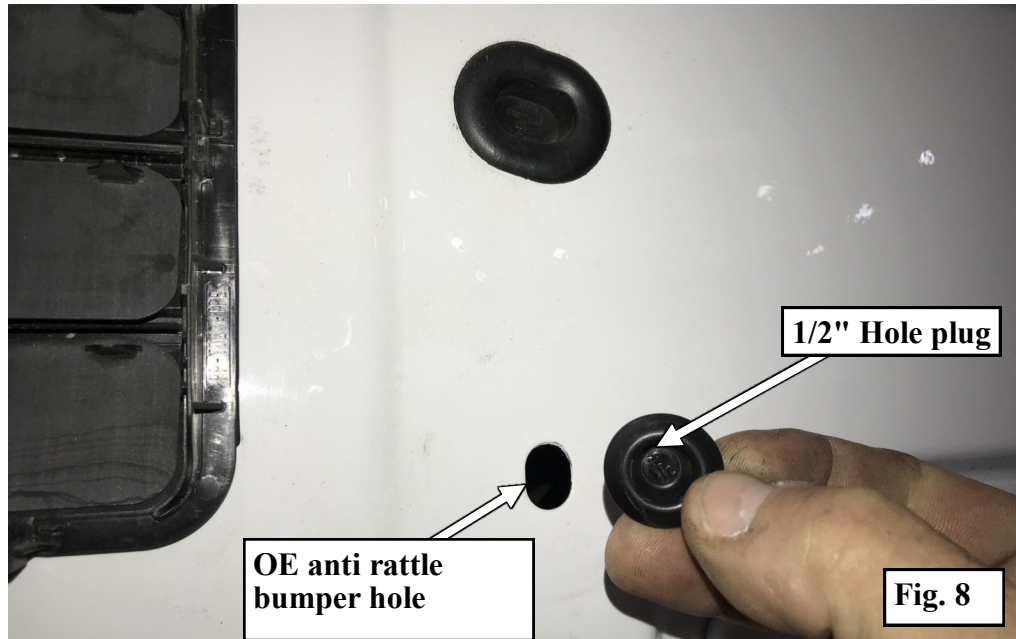


For Technical Support/Warranty Information please call 310-762-9944

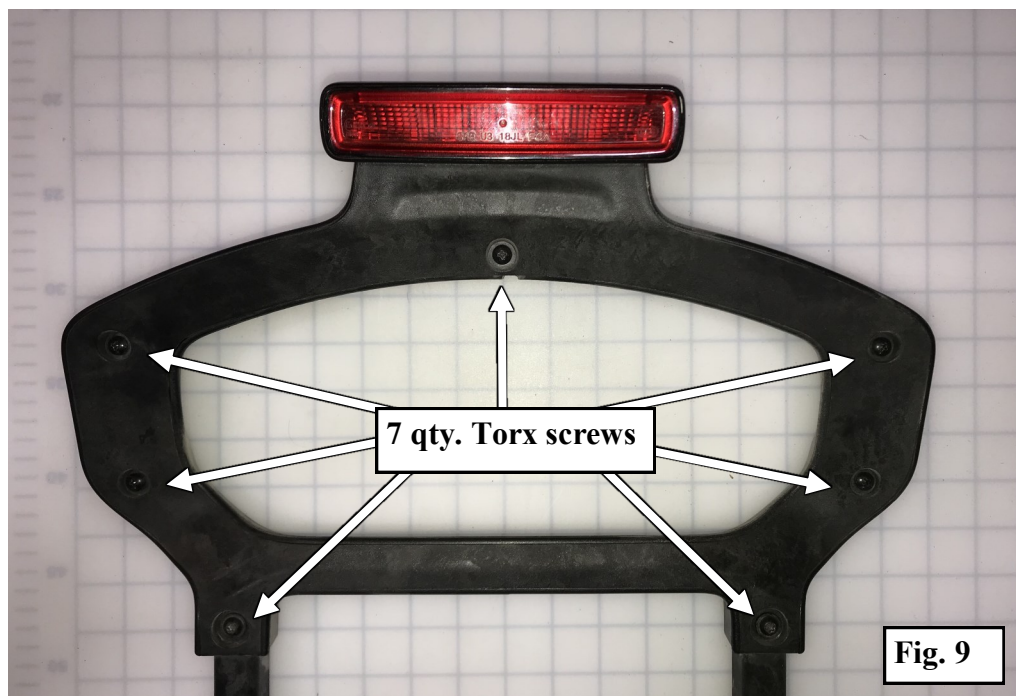


Installation Instructions: (Part # SB77857) 2018+ Jeep JL Gen 3 Tire Carrier

Step 8 : In Hardware pack (77857-12) locate the (2 qty.) ½" black plastic push in hole plugs. Insert them into the OE anti-rattle bumper holes (Fig. 8). The plugs will snap into place with the outer edge flush to the door when properly installed.



Step 9 : Place the OE tire carrier face up on a clean work area. With a Torx bit remove the (7 qty.) screws securing the backplate to the 3rd brake light frame (Fig. 9).



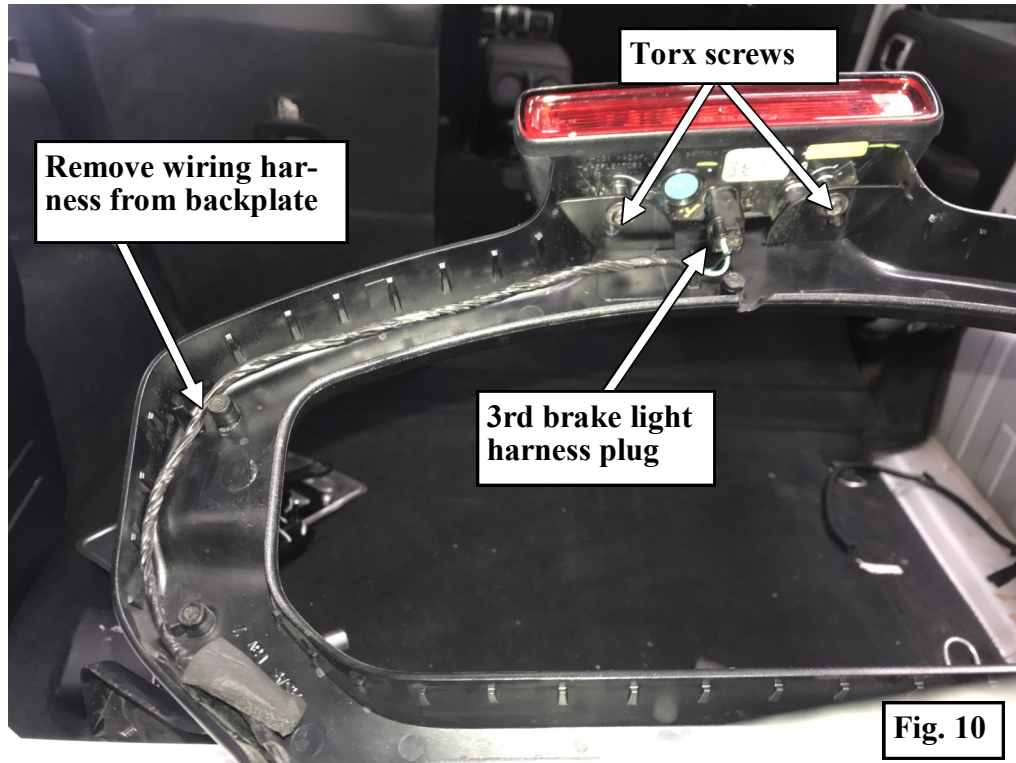
For Technical Support/Warranty Information please call 310-762-9944



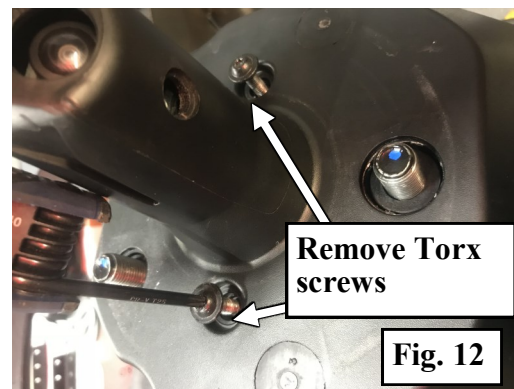
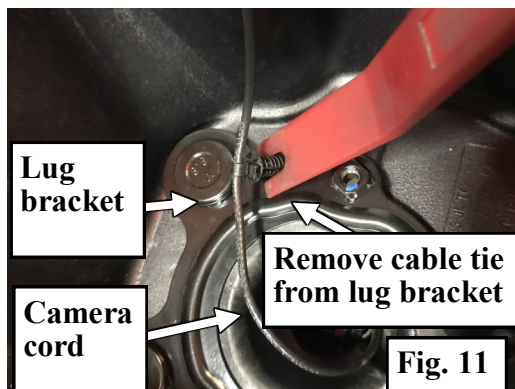
Installation Instructions:

(Part # SB77857)
2018+ Jeep JL Gen 3 Tire Carrier

Step 10: Remove the (2) Torx screws securing the 3rd brake light to the frame, carefully unplug the harness from the 3rd brake light and remove the harness from the backplate (**Fig. 10**). Set the OE 3rd brake light aside for reinstallation later.



Step 11: Turn the OE tire carrier over and carefully remove the camera cord cable tie from the lug bracket. (**Fig. 11**) Turn the carrier right side up, remove the (2) Torx screws on either side of the camera cone that secure the lug bracket. Save these screws for reinstallation (**Fig. 12**). Push the lug bracket out of the carrier, being careful not to damage the camera cord.



For Technical Support/Warranty Information please call 310-762-9944



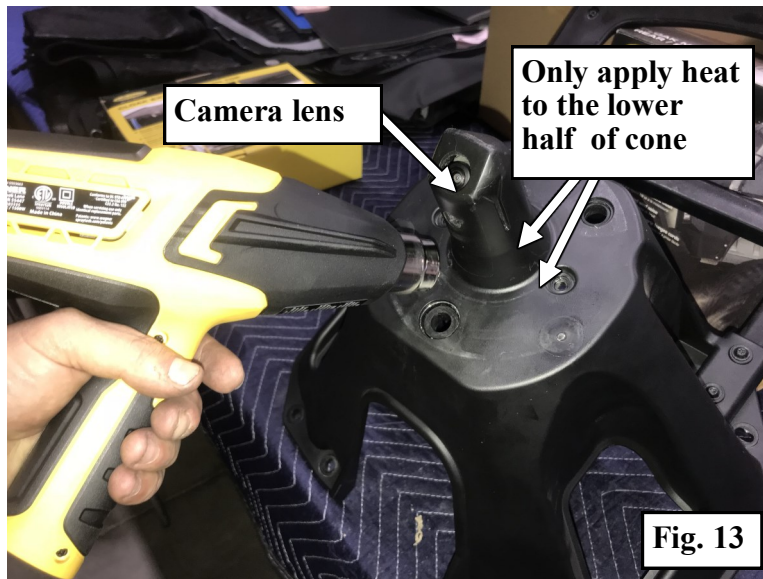
Installation Instructions:

(Part # SB77857)
2018+ Jeep JL Gen 3 Tire Carrier

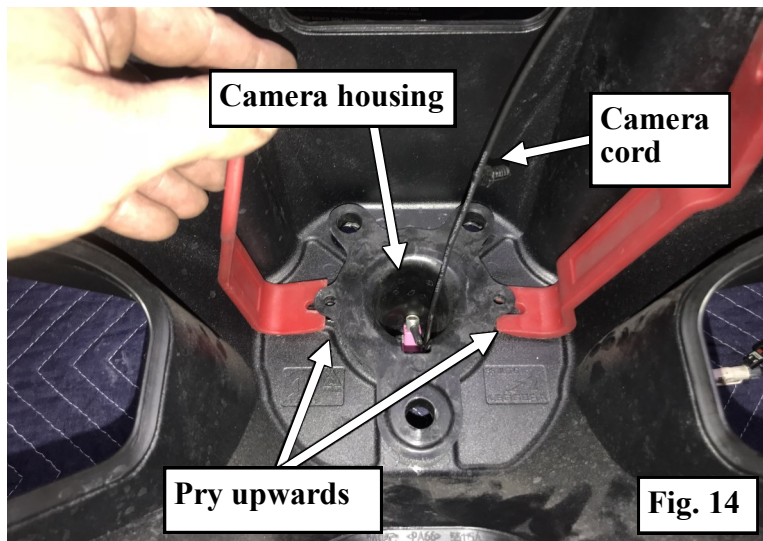
Step 12: With the tire carrier lying flat on your clean work surface, use a heat gun in a slow circular motion, to warm up the lower half of the camera cone (**Fig. 13**).

Be very careful to not apply heat anywhere near the camera or its lens!

After about 3 minutes, check the temperature at the base of the nose cone. It should be hot enough that it is uncomfortable to touch for longer than 5-10 seconds, if not repeat this step.



Step 13: Turn the tire carrier over, with (2) small pry bars on opposing sides and moderate force, pry up on the camera housing flanges without pinching camera cord (**Fig. 14**). If the base of the nose cone is heated sufficiently, the camera housing should pop out. If this doesn't happen within 10-20 seconds, repeat Step 12.

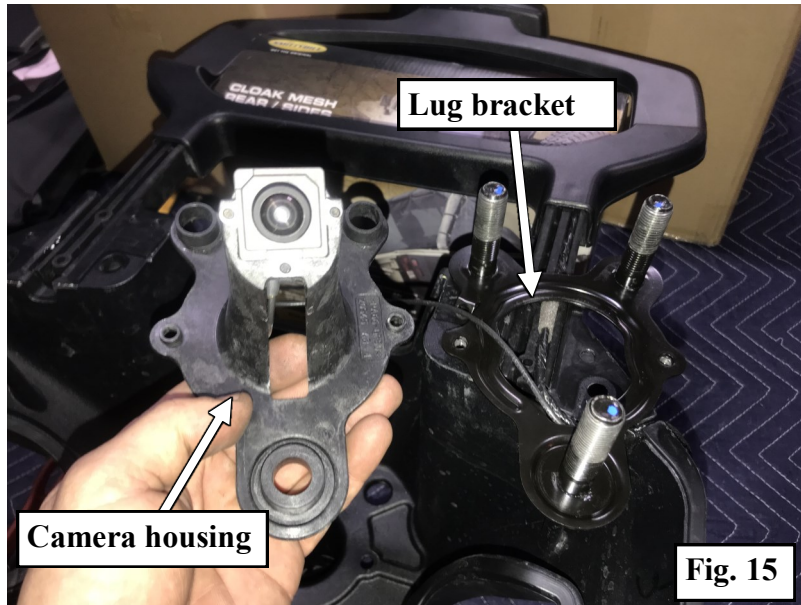


For Technical Support/Warranty Information please call 310-762-9944

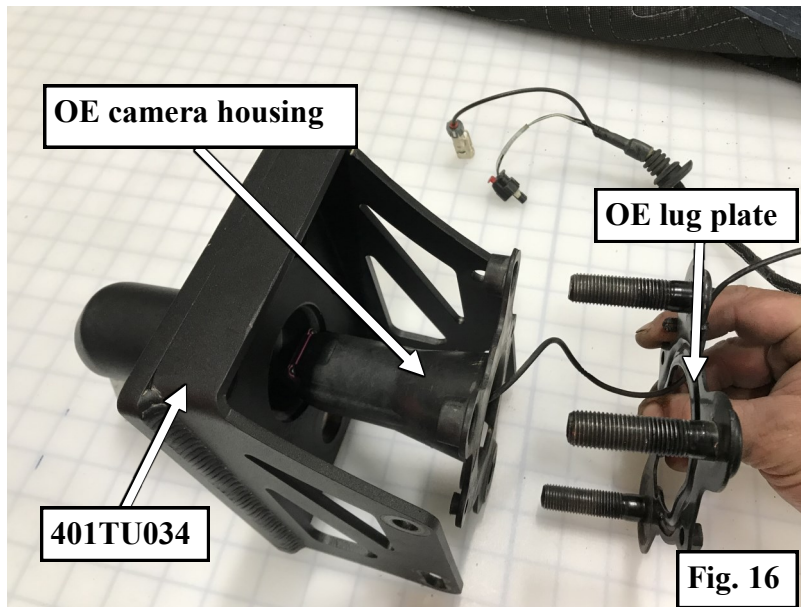


Installation Instructions: (Part # SB77857) 2018+ Jeep JL Gen 3 Tire Carrier

Step 14: When the camera housing pops out, carefully remove the lug bracket, camera housing and wiring harness from the OE tire carrier (Fig. 15).



Step 15: Locate the Adjustable Wheel Mount Bracket (401TU034) and carefully install the OE camera housing and lug plate into it using the (2) OE screws, tighten them to 8ft-lbs (Fig. 16). Set aside for now.



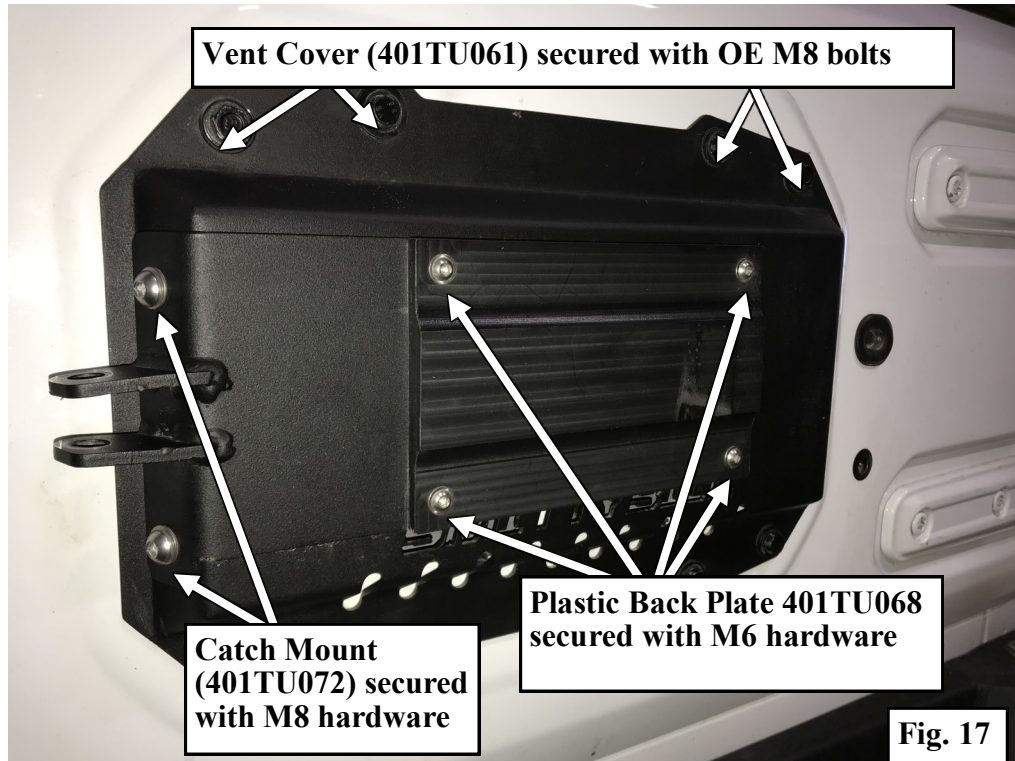
For Technical Support/Warranty Information please call 310-762-9944



Installation Instructions:

(Part # SB77857)
2018+ Jeep JL Gen 3 Tire Carrier

Step 16: Locate your new Vent Cover Plate (401TU061) Install it in place of the OE spare tire carrier on the tailgate using the OE M8 hardware (Fig. 17). **Locate Hardware Kit (77857-04), Joint and Catch Mount (401TU072) & Back Plate (401TU068).** Install the Catch Mount on the Vent Cover using the (2) M8x25 bolts/washers as shown. Locate and install the plastic Back Plate onto the Catch Mount with (4 qty.) M6 screws /washers. Tighten the M8 bolts to **20ft-lbs.** M6 screws to **8ft-lbs.**



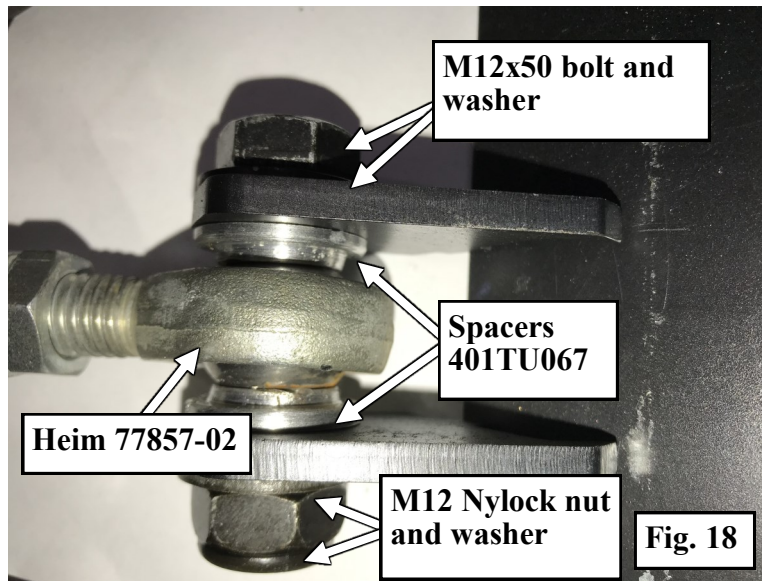
For Technical Support/Warranty Information please call 310-762-9944



Installation Instructions:

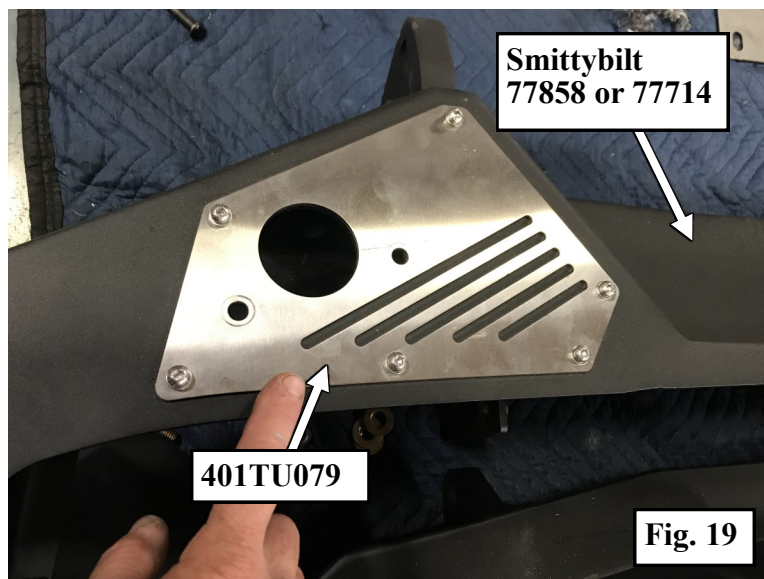
(Part # SB77857)
2018+ Jeep JL Gen 3 Tire Carrier

Step 17: Locate Hardware Pack (77857-03), Heim Joint Spacers (4qty. 401TU067), and Heim Joint (77857-02). Install one end of the Heim joint to the Catch Mount with (2) spacers and M12 hardware as shown (Fig. 18). Tighten M12 hardware to 55ft-lbs.



NOTE : *If you have previously purchased and installed Smittybilt rear bumper XRC 77858 or SRC 77714, you will need to remove it for the next steps.*

Step 18: Place your bumper on a moving blanket to help prevent marring. Remove the (6) screws securing the right-side stainless-steel cover plate. Locate and install your new Stainless-Steel Cover Plate (401TU079) with the existing hardware (Fig. 19). Tighten this hardware to 5ft-lbs.



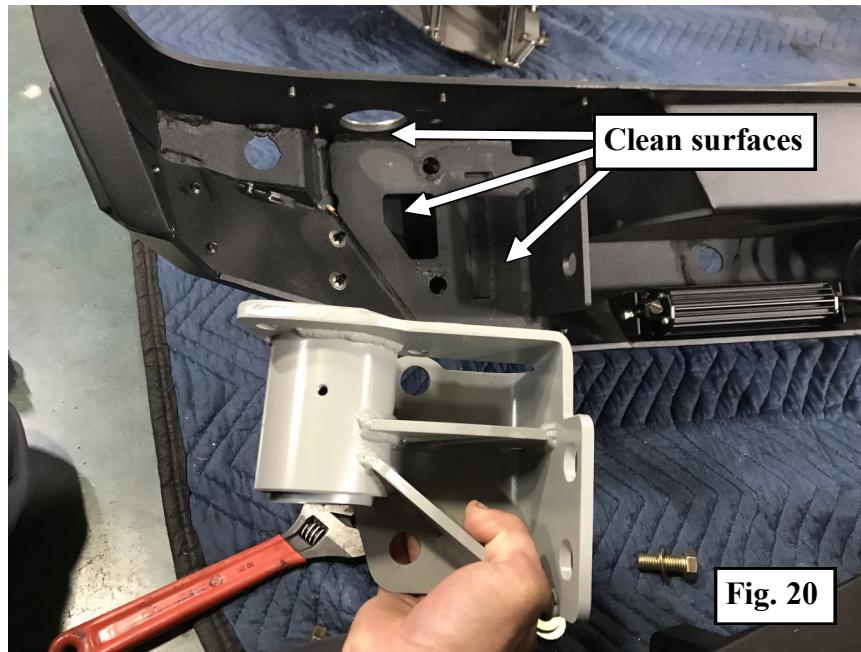
For Technical Support/Warranty Information please call 310-762-9944



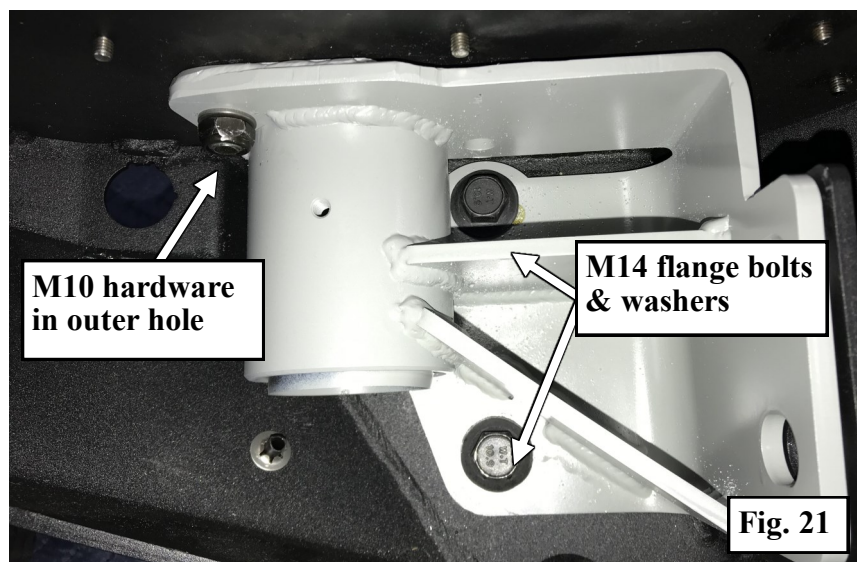
Installation Instructions:

(Part # SB77857)
2018+ Jeep JL Gen 3 Tire Carrier

Step 19: Inspect the pivot mounting area of your bumper, make sure the area is cleaned of dirt and/or weld splatter. Insert your previously assembled Bearing Pivot from Step 2 in to the mounting pocket making sure that it sits flush on all three sides (**Fig. 20**).



Step 20: Locate **Hardware Pack (77857-07)**. Secure the Pivot Bearing to the bumper with an M10x30 button head screw in the outer hole through the new Cover Plate into the Pivot Bearing, with an M10 Nylok nut/washer, tighten just snug. Install (2) M14x35 flange bolts/washers through the Pivot Bearing into the backside of the bumper, tighten these just snug as well. (**Fig. 21**).



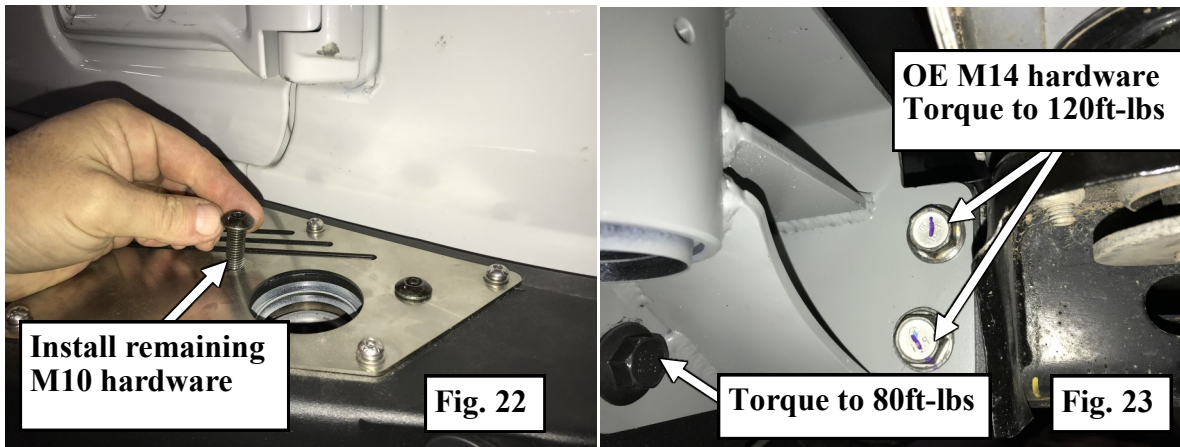
For Technical Support/Warranty Information please call 310-762-9944



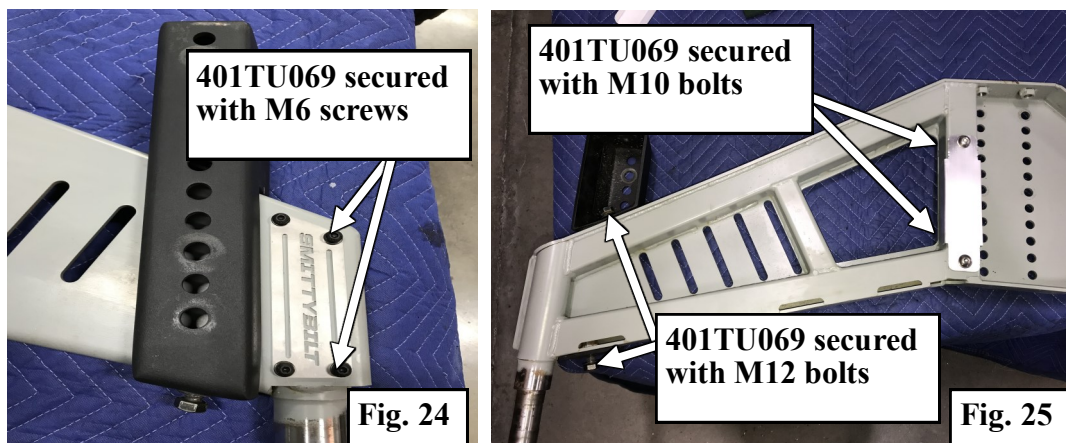
Installation Instructions:

(Part # SB77857)
2018+ Jeep JL Gen 3 Tire Carrier

Step 21: Install/re-install the bumper on the back of your vehicle following the instructions provided. Torque all hardware to spec except the mounting bolts in the Bearing Pivot. Adjust the Bearing pivot as you snug the mounting hardware, making sure that it is firmly mated to the top, back, and mounting flange surfaces. Torque M10 bolt from the previous step to **30ft-lbs**, (2) M14 flange-bolts to **80ft-lbs**. Install the last M10 bolt/nut/washer from **Hardware Pack (77857-07)** through the bumper and Bearing pivot, (**Fig. 22**) tighten to **30ft-lbs**. Tighten the OE M14 fine thread frame rail bolts to **120ft-lbs** (**Fig. 23**).



Step 22: Locate **Swing Arm (401TU070)**, **High-lift Jack Mount (401TU076)**. If not already installed, locate **Logo Plate (401TU077)** & **Contact Plate (401TU069)**. Install the Logo Plate with M6 screws from **Hardware Pack (77857-11)** (**Fig. 24**). Flip the Swing arm over and as shown in (**Fig 25**), install the Contact plate on the backside with M10 bolts in **Hardware Pack (77857-09)**. Install the High-Lift Jack Mount to the Swing Arm with the M12 bolts/washers found in **Hardware Pack (77857-06)**. Torque M6 screws to **8ft-lbs**, M10 bolts to **30ft-lbs** M12 bolts to **55ft-lbs**.



For Technical Support/Warranty Information please call 310-762-9944



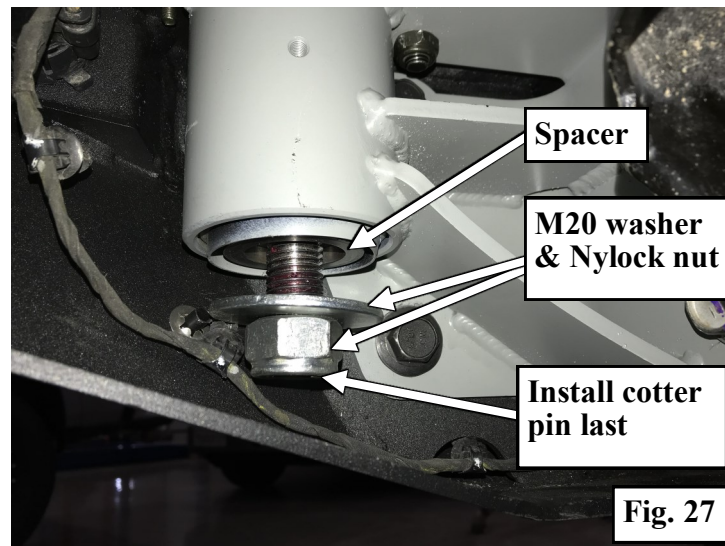
Installation Instructions:

(Part # SB77857)
2018+ Jeep JL Gen 3 Tire Carrier

Step 23: Slather a film of grease on the Swing Arm's machined pin. Carefully insert the pin through the bumper, into the Bearing Pivot being careful not to knock the Bearing spacer out (**Fig. 26**).



Step 24: On the bottom side of the Bearing Pivot, install the M20 washer and Nylok nut found in **Hardware Pack (77857-08)**. Tighten the nut while gently swinging the arm back and forth until it bottoms out when the bearings and spacer seat, then back off 1/8 of a turn. Install the Cotter Pin through the hole in bottom of threaded pin and bend one leg over (**Fig. 27**).



For Technical Support/Warranty Information please call 310-762-9944

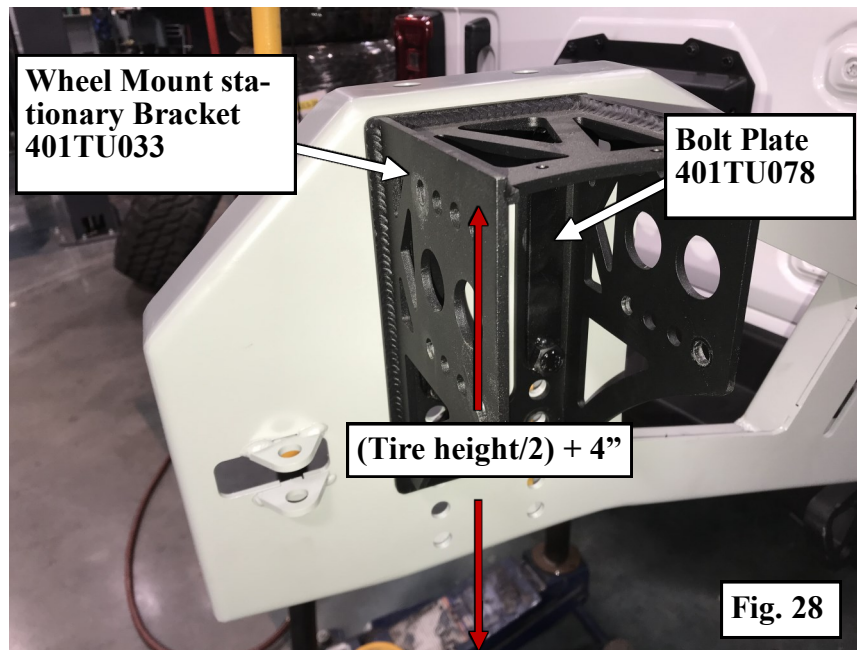


Installation Instructions: (Part # SB77857) 2018+ Jeep JL Gen 3 Tire Carrier

Step 25: Locate Wheel Mount Stationary Bracket (401TU033), Bolt Plate (401TU078), and Hardware Pack (7743-03).

NOTE : To figure out a good initial mounting height for your spare tire, use this formula; $(\text{tire height}/2) + 4"$. For a 37" tire this would be 22.5". This will be the distance from the deck of the bumper to the top of the stationary bracket.

Mount the Stationary Bracket to the Swing Arm using the (2) Bolt Plates and M12 nuts/washers from the Hardware pack. Torque to 55ft-lbs. (Fig. 28)



For Technical Support/Warranty Information please call 310-762-9944

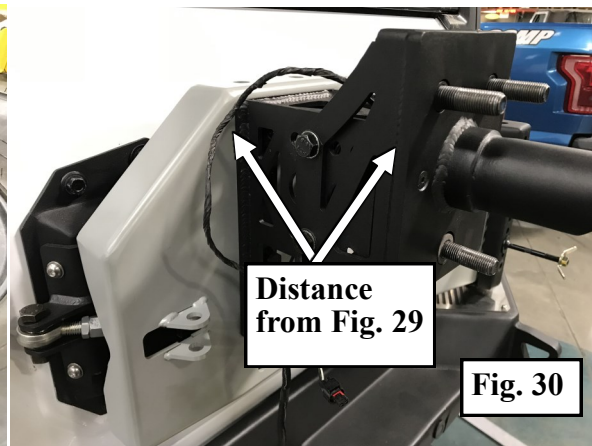
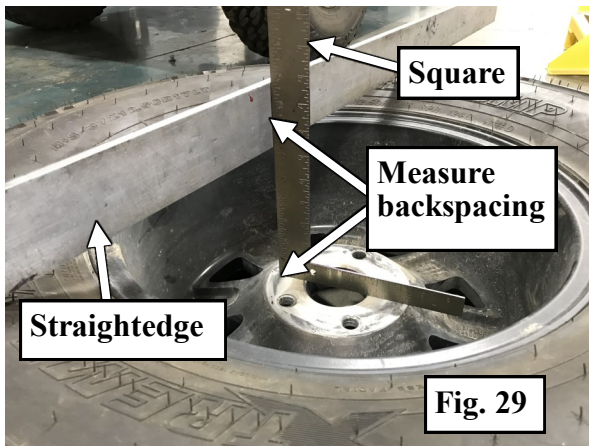


Installation Instructions:

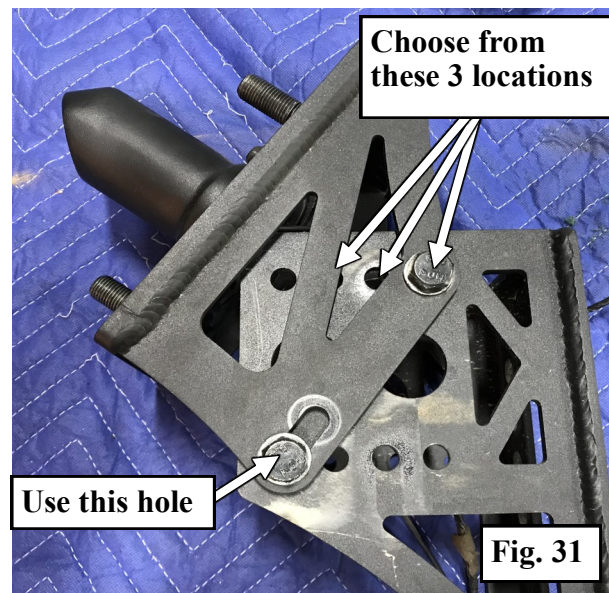
(Part # SB77857)
2018+ Jeep JL Gen 3 Tire Carrier

Step 26: Place your spare tire face down on the floor. Using a straight edge and small square, measure the backspacing (**Fig. 29**).

Install the previously assembled Adjustable Tire Mount from Step 16 onto the Stationary Bracket. Position the Bracket so that the distance from the face of the Swing Arm, to the face of the Adjustable Tire Mount (**Fig. 30**) is equal to, or slightly longer than the measurement from (**Fig. 29**) Secure using the remaining M10 hardware from **Hardware Pack (7743-03)**. Torque M10 hardware to **30ft-lbs**.



Step 27: The Adjustable mount can also be adjusted for (3) different slant configurations (**Fig. 31**). With the lower bolt in the outermost hole, choose the angle that matches your need.



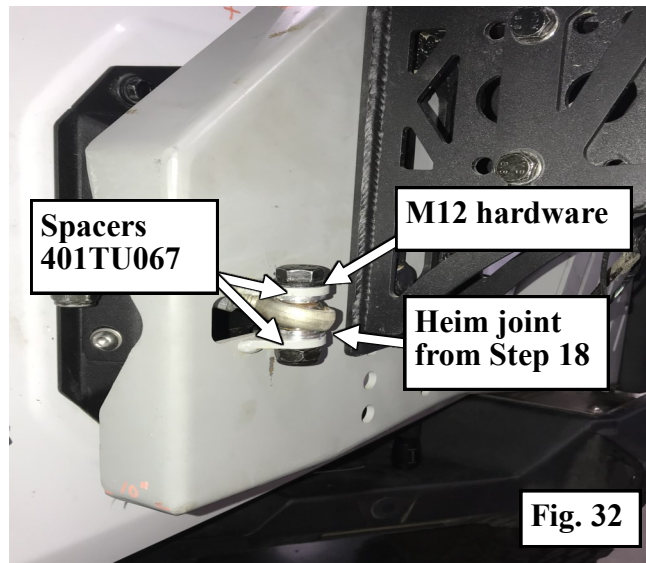
For Technical Support/Warranty Information please call 310-762-9944



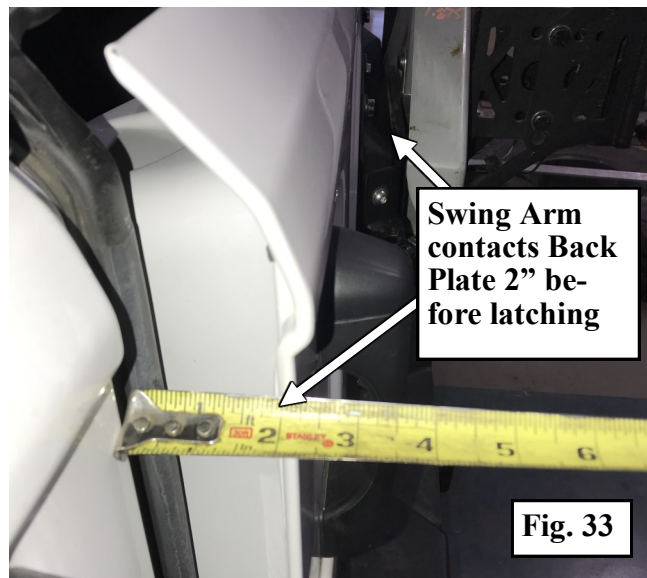
Installation Instructions:

(Part # SB77857)
2018+ Jeep JL Gen 3 Tire Carrier

Step 28: Open the tailgate about half way. Insert the Heim Joint into the Swing Arm, secure it to the Swing Arm using the remaining (2) Heim Spacers (401TU067) and M12 hardware from **Hardware Pack (77857-03)** as shown in (Fig. 32). Tighten M12 hardware to **55ft-lbs**.



Step 29: Adjust the Heim Joint so that when closing the tailgate, the swing Arm makes contact with the backing plate approximately 2" from latching (Fig. 33). Firmly tighten the jam-nuts on the heim joint.



For Technical Support/Warranty Information please call 310-762-9944

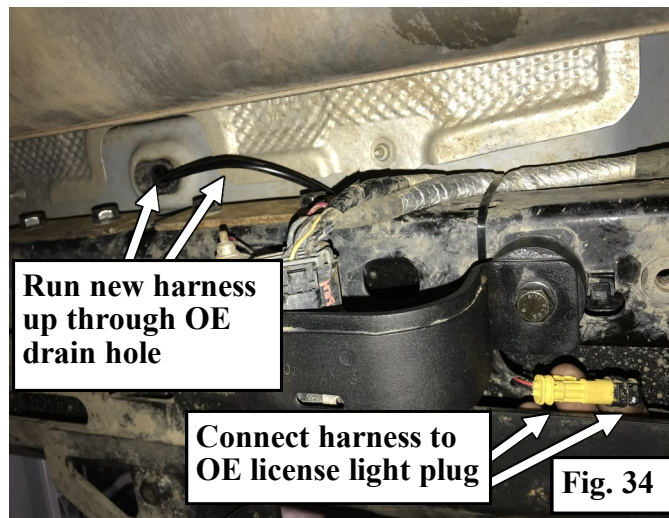


Installation Instructions:

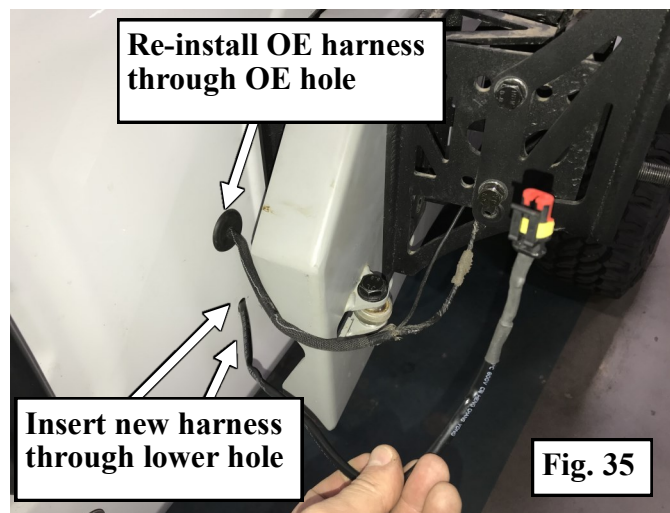
(Part # SB77857)
2018+ Jeep JL Gen 3 Tire Carrier

DISCLAIMER: Extended wiring harness is not included with this kit, as for most applications it is not necessary. If, however, your O.E harness is not long enough, use (77857-12) for adequate installation.

Step 30: Open the tailgate and remove the scissor jack cover, jack, and jack handle. Locate the Light Cable Extension wiring harness in **Hardware Pack (77857-12)**. Under the left side of your bumper connect the female end of the harness extension to the OE license plate light plug. Run the other end over the frame up through the drain hole in the scissor jack storage compartment (**Fig. 34**). Secure harness as needed to frame with supplied cable ties.



Step 31: On the outside of your tailgate, re-insert the OE camera/brake light harness into the tailgate. Run the other half of the new Harness Extension through the lower tailgate hole leaving about 18" of slack hanging out (**Fig. 35**).



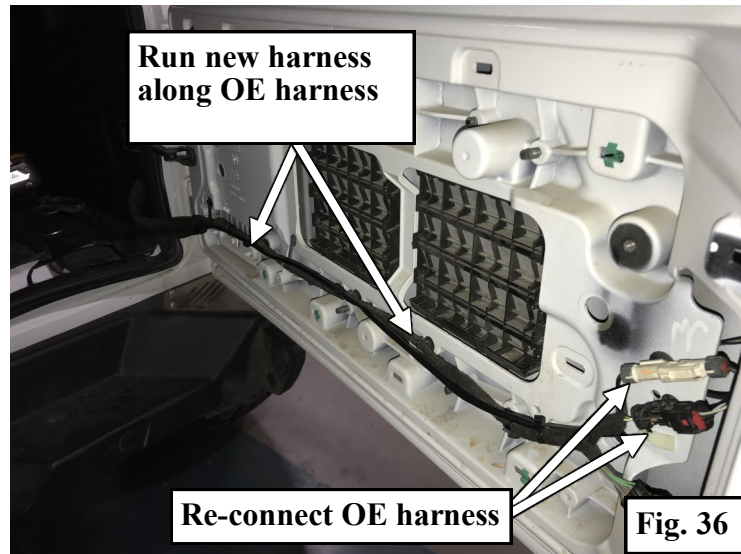
For Technical Support/Warranty Information please call 310-762-9944



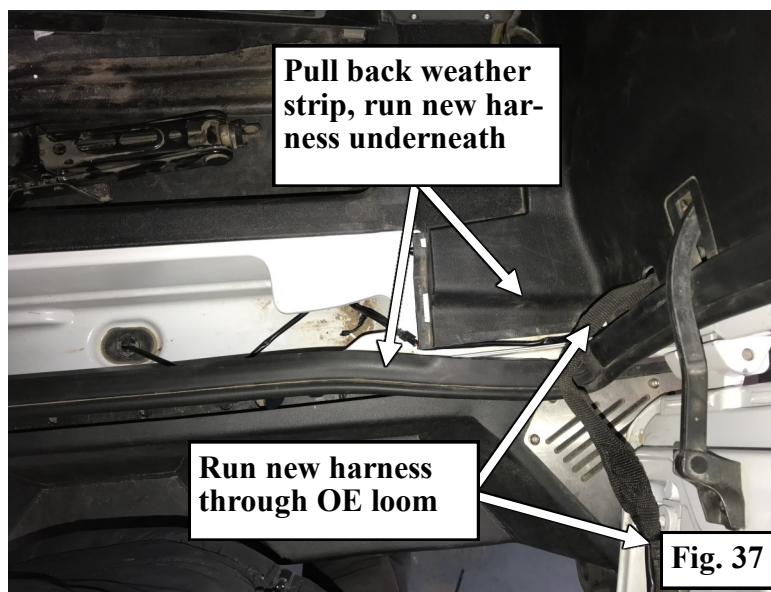
Installation Instructions:

(Part # SB77857)
2018+ Jeep JL Gen 3 Tire Carrier

Step 32: On the inside of the tailgate, re-connect the OE camera and 3rd brake light harnesses. Run the new License Plate light harness along the OE harness securing it with cable ties as needed (**Fig. 36**).



Step 33: Pull back the section of weather stripping in the lower hinge area, exposing the edge of the plastic interior panels. Carefully, without snipping any wires, cut a small hole at both ends of the OE fabric wiring loom. Insert the new harness through the loom and down the body under the OE panels and connect to the other half of the new harness previously installed in Step 30 (**Fig. 37**). Coil any excess wiring under the OE paneling to protect it. Re-install weather stripping, jack handle, jack, and cover.



For Technical Support/Warranty Information please call 310-762-9944

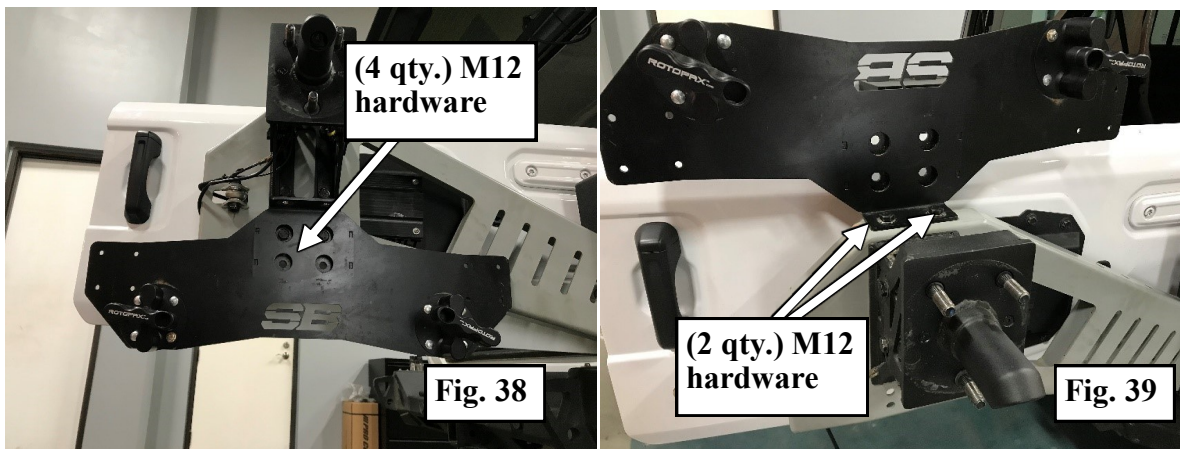


Installation Instructions:

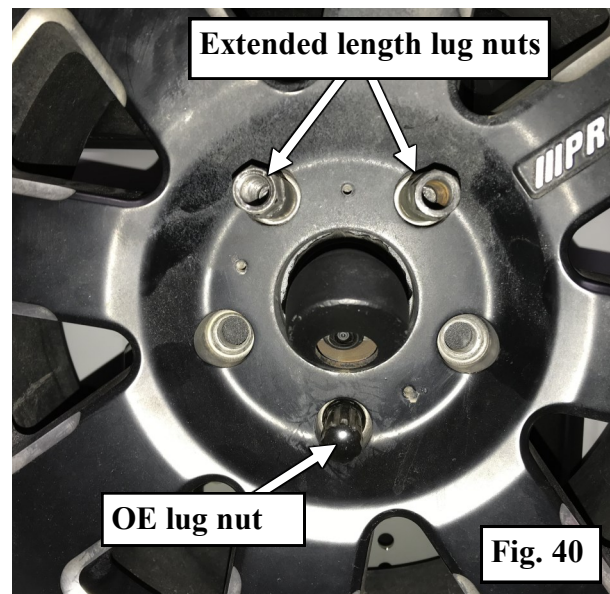
(Part # SB77857)
2018+ Jeep JL Gen 3 Tire Carrier

Step 34: Re-install the tailgate cover to the back of the tailgate (see Fig. 3), align the cover to the tailgate, with the palm of your hand, press it back in place.

Step 35: Locate **Rotopax Mount (401TU071)** and **Hardware Pack (77857-12)**. The Rotopax mount can be installed one of two ways depending on your preferred configuration. With the spare tire in slant mode, use **(4 qty.) M12 bolts/washers/nuts** to secure it to the Swing Arm under the Spare Tire Mounting Bracket (**Fig. 38**). In vertical mode the Rotopax mount can be bolted to the top of the Swing Arm using **(2 qty.) M12 bolts/washers (Fig. 39)**. Tighten M12 hardware to **55ft-lbs.**



Step 36: Close the tailgate and install your spare tire using the (2) extended length lug nuts (supplied with your bumper) on the top two studs. Install an OE lug nut on the remaining bottom stud (**Fig. 40**). Tighten these to **55ft-lbs.**



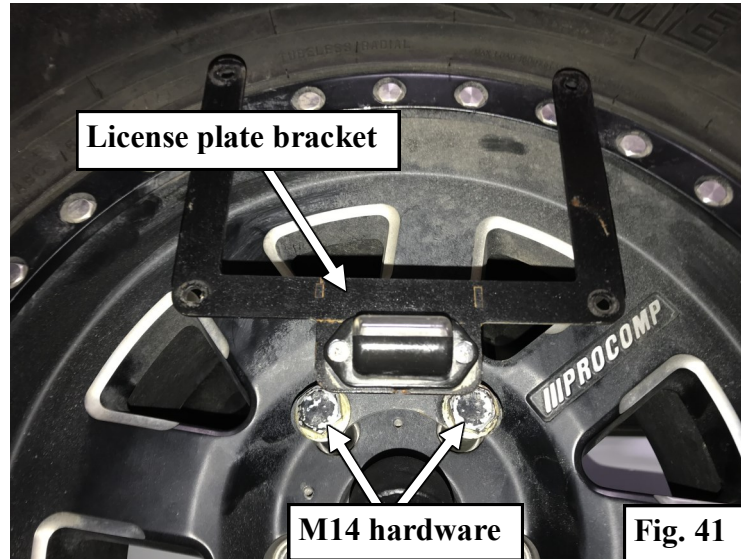
For Technical Support/Warranty Information please call 310-762-9944



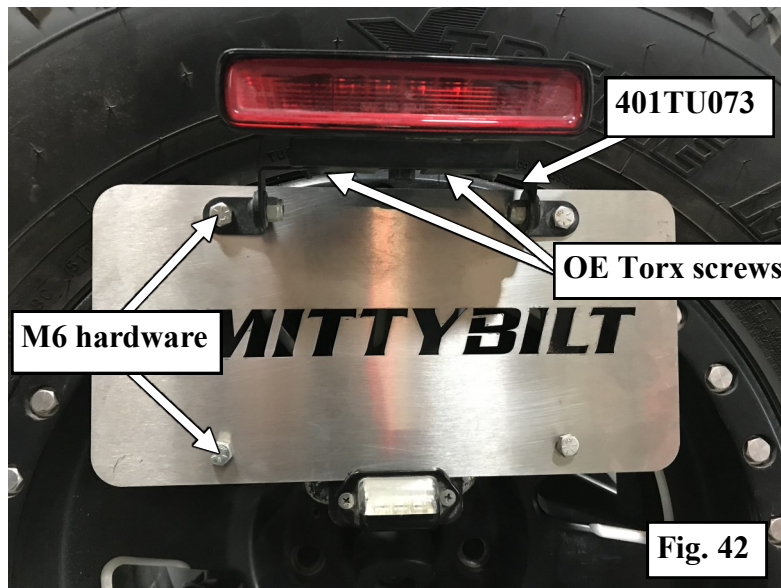
Installation Instructions:

(Part # SB77857)
2018+ Jeep JL Gen 3 Tire Carrier

Step 37: Install your License Plate bracket supplied with your bumper to the extended length lug nuts with (2) M14 bolts and washers (**Fig. 41**). Tighten these to **55ft-lbs**.



Step 38: Install your License Plate to the Bracket with supplied (2 qty.) M6 hardware in the lower holes. Locate **3rd Brake Light Bracket (401TU073)** install the OE 3rd brake light on it using the OE Torx screws. Install this assembly over your license plate using the upper two mounting holes and remaining (2 qty.) M6 hardware (**Fig. 42**). Attach angle brackets(included with bumper or license plate bracket kit #7734) Then attach 3rd brake light mount to angle brackets. Tighten M6 hardware to **6ft-lbs**. and OE Torx screws till just snug.



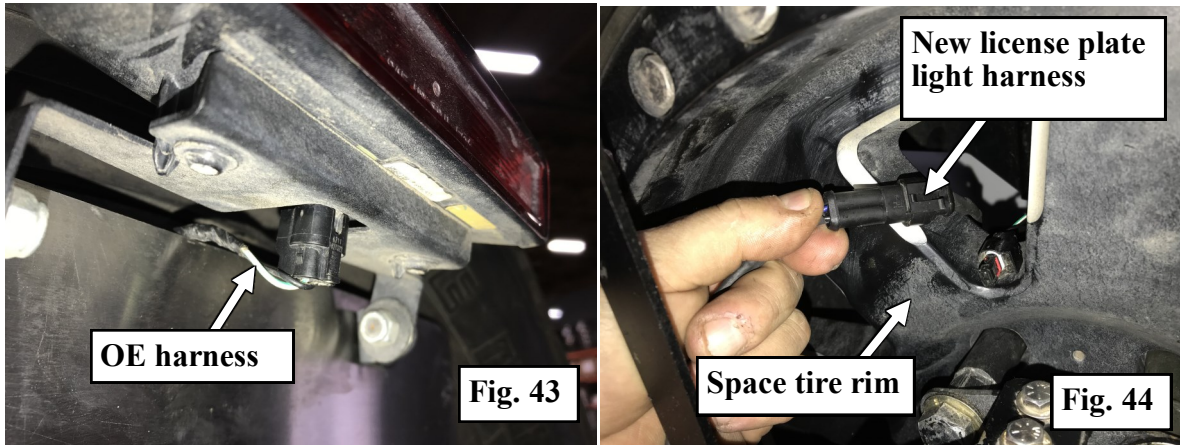
For Technical Support/Warranty Information please call 310-762-9944



Installation Instructions:

(Part # SB77857)
2018+ Jeep JL Gen 3 Tire Carrier

Step 39: Run both light harnesses thru the rim. Plug the OE 3rd brake light harness into the OE 3rd brake light (**Fig. 43**), then connect the license plate light into the new harness installed in Step 31 (**Fig. 44**).



Step 40: Open and close your tailgate repeatedly to verify function. Double check all hardware and re-torque to spec as necessary. Installation of your tire carrier is complete! (**Fig. 45**).



For Technical Support/Warranty Information please call 310-762-9944



Installation Instructions:

(Part # SB77857)
2018+ Jeep JL Gen 3 Tire Carrier

Use this only as a guide for hardware without a called out torque specification in the instruction manual.

Bolt Torque and ID						
Decimal System			Metric System			
All Torques in Ft. Lbs. Maximums						
Bolt Size	Grade 5	Grade 8	Bolt Size	Class 9.8	Class 10.9	Class 12.9
5/16	15	20	M6	5	9	12
3/8	30	45	M8	18	23	27
7/16	45	60	M10	32	45	50
1/2	65	90	M12	55	75	90
9/16	95	130	M14	85	120	145
5/8	135	175	M16	130	165	210
3/4	185	280	M18	170	240	290

<p>1/2-13x1.75 HHCS</p> <p>D T L X</p>	<p>M12-1.25x50 HHCS</p> <p>D T L X</p>
<p>Grade 5 Grade 8 (No. of Marks + 2)</p>	<p>P</p>
<p>G = Grade (Bolt Strength) D = Nominal Diameter (Inches) T = Thread Count (Threads per Inch) L = Length (Inches) X = Description (Hex Head Cap Screw)</p>	<p>P = Property Class (Bolt Strength) D = Nominal Diameter (Millimeters) T = Thread Pitch (Thread Width, mm) L = Length (Millimeters) X = Description (Hex Head Cap Screw)</p>

For Technical Support/Warranty Information please call 310-762-9944



Installation Instructions:

(Part # SB77857)
2018+ Jeep JL Gen 3 Tire Carrier

Product cleaning and maintenance instructions

Stainless Steel Finish – Aluminum polish may be used to polish small scratches and scuffs on the finish. Mild soap, window or glass cleaner may be used to clean the finish. **Dual state powder coat finish** – Mild soap, window or glass cleaner may be used to clean the finish. In order to protect the finish, you may wax your product on a regular basis with pure carnauba automotive wax. Do not use any types of soap, polish or wax that contains abrasive that could damage the finish. **Textured coated finishes** should be cleaned with a mild soap on a damp sponge. Do not apply polish or wax that requires to be removed by means of buffing. This type of wax is commonly used at car wash facilities. **Chrome Finish** – Mild soap, window or glass cleaner may be used to clean the finish. In order to protect the finish, you should wax your product on a regular basis with pure carnauba automotive wax. Do not use any types of soap, polish or wax that contains abrasive that could damage the finish.

Limited Warranties

Smittybilt's products are covered under the following limited warranties only. Note that the duration of the limited warranty differs according to the material and finish of the product purchased. Subject to the duration and conditions of the limited warranty stated below, Smittybilt warrants to the original retail purchaser that its products are free from defects in material and workmanship. All other warranties and representations express or implied, are hereby disclaimed, including fitness for merchantability and buyer's intended use or purpose. All parts are sold "AS IS" except for the limited warranties granted herein. Buyer assumes all risks as to the selection, suitability and performance of all goods and products selected. This limited warranty does not cover damage or impairment in any part due to misuse, improper installation, accident or contact with on-road or off-road hazards, product modification, improper or inadequate cleaning and/or maintenance. Smittybilt is not responsible for items damaged during shipping. This warranty is not transferable from the original buyer. For the original Buyer to be eligible for the limited warranty coverage, the Buyer must provide proof of purchase. Smittybilt strongly recommends returning the warranty registration card.

Customer's remedy hereunder shall be limited only to repair or replacement (at Smittybilt's option) of any defective part(s) returned to Smittybilt at customer's expense. The determination of whether or not a returned part is defective or subject to coverage under the limited warranties stated herein shall be made at Smittybilt's sole discretion.

To assure product quality, Smittybilt reserves the right to change product design, material, specification and finishes without prior notice to customers. This limited warranty gives you specific legal rights and you may also have other rights, which may vary from state to state. Some states do not allow limitations on how long an implied warranty lasts, so the above limitations may not apply as to you. Also, some states do not allow the exclusion or limitation of incidental or consequential damages, so the above limitations or exclusions may not apply to you. Smittybilt reserves the right to discontinue product lines and substitute products or provide other remedies than those listed in this limited warranty for those discontinued products.

Warning

Rollover and other types of vehicle accidents may result in serious injury or death to you, your passengers and others sharing the road. Smittybilt accessories are decorative and are not intended to reduce or avoid injury or damage in the event of an accident. The weight and location of Smittybilt accessories may affect your vehicles' handling, stability and performance, creating an increased risk of accident or rollover. Before installing any accessory, check state laws and assure that the accessory will not obscure any lights or interfere with proper operation on your vehicle's safety equipment. Consult your owner's manual and the Smittybilt instructions, or additional safety information. Smittybilt products, nor the warnings contained herein, are not a substitute for your safe driving. Don't drink and drive, always use seat belts and don't drive faster than conditions permit.

For Technical Support/Warranty Information please call 310-762-9944

Smittybilt, 400 W. Artesia, Compton, CA 90220



NOTE: Please take time to fill in the information requested below. It is highly recommended to keep this with the instructions and warranty information in a safe location. This will help with any warranty or customer service issues if they should arise. Please write down the DOP# that is located on the outside of the box and or on part or hardware box. (Pictured Below)



Part Number: _____
Date of Purchase: _____
Where did you purchase this product? _____
Store or catalog name: _____
Store Location: _____
Invoice # _____
DOP# _____
Who installed or will install your Smittybilt product? _____



Jeep® and Wrangler® are registered trademarks of Chrysler

For Technical Support/Warranty Information please call 310-762-9944

Smittybilt, 400 West Artesia Blvd, Compton, CA 90220