

# Installation Instructions

The logo features the letters 'SB' in a large, bold, black font with a yellow outline, set against a yellow rectangular background. Below 'SB', the word 'SMITTYBILT' is written in a smaller, bold, black font.A photograph of a white Jeep JT pickup truck in a workshop. The truck has orange and red decorative stripes along the side. The rear fender area is the focus of the installation. An inset image in the bottom right corner provides a closer view of the fender and wheel area.

Jeep JT Rear Fenders  
Part # **SB77854**

The logo features the letters 'SB' in a large, bold, black font with a yellow outline, set against a yellow rectangular background. Below 'SB', the word 'SMITTYBILT' is written in a smaller, bold, black font.

For Technical Support/Warranty Information please call 1-800-776-0767  
Smittybilt, 1017 W. 600 N. STE 4, Ogden, UT 84404

## Introduction

Thank you for choosing Smittybilt accessories for your **Jeep JT / JL**. If you would like to view our full range of available accessories.



**JEEP®**, **JT®** & **JL®** are registered trademarks of Chrysler Motor Company.

## Important Notes Before Starting

### ! IMPORTANT NOTE

Carefully read through this entire instruction manual thoroughly before attempting to install this part.  
Chock all 4 wheels if doing install without removing wheels.

### ! WARNING

Serious injury can occur when working on vehicles alone.  
When possible, work with another person to reduce risk of injury from strain or other dangers that can occur when working alone.

The following tools will be required to complete the installation of this part:

TOOLS REQUIRED		
Drill	Needle Nose Pliers	Pry Tool
1/2" Wrench or Socket	17/32" Drill Bit	Blue Painters Tape
3/8" Ratchet	3/16" Hex Bit	



For Technical Support/Warranty Information please call 1-800-776-0767  
Smittybilt, 1017 W. 600 N. STE 4, Ogden, UT 84404

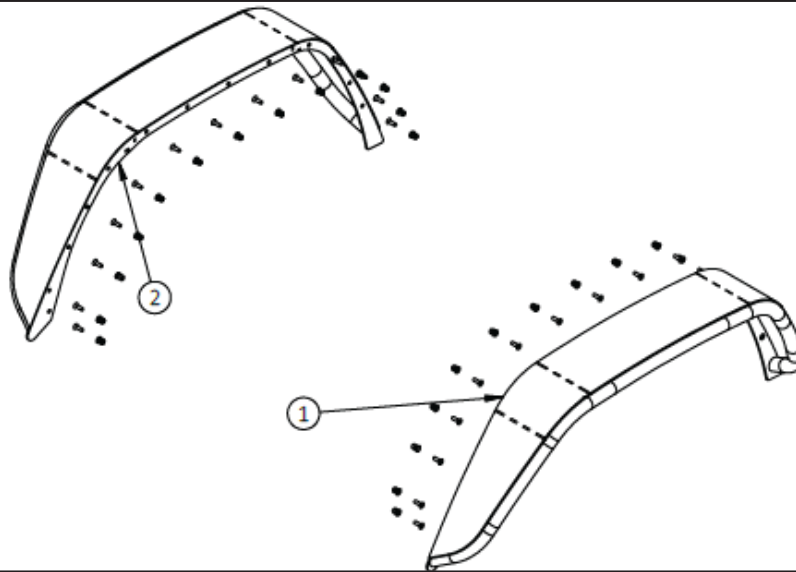
# Box Contents & Technical Information

## Box Contents

### **!** IMPORTANT NOTE

Some applications require modification:

Drilling or trimming of OE sheet metal may be necessary



### Running Board Assembly

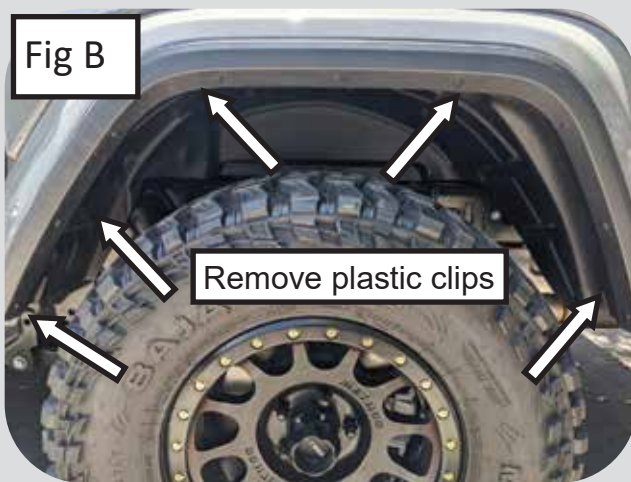
BUBBLE	PART NO.	DESCRIPTION	QTY
1	22-05-010-DRV	JT REAR FENDER - DRIVER	1
2	22-05-010-PASS	JT REAR FENDER - PASS	1
3	70-0311001407	5/16"-18 UNC" X 1-FLAT HEAD SOCKET CAP SCREW SS	26
4	90-40874	5/16-18 0.027" - 0.150" FLANGE RIBBED NUTSERT STEEL YZNC	4
5	97135A220	STEEL NYLOCK GRADE 8 YZNC 5/16"-18	24
6	90850A150	GRADE 9 STEEL WSHR YZNC 5/16"	24
7	HWT-NST-31	5/16 NUT-SERT INSTALLATION TOOL	1



For Technical Support/Warranty Information please call 1-800-776-0767  
Smittybilt, 1017 W. 600 N. STE 4, Ogden, UT 84404

## Installation Instructions: Mechanical Installation

Fig B



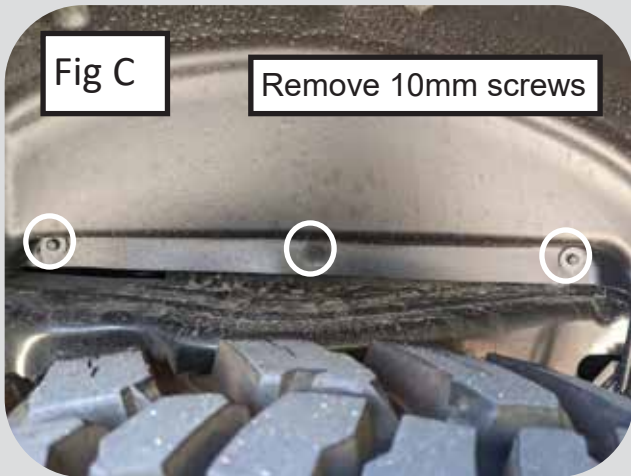
### MECHANICAL INSTALLATION

**Step 1:** Place the vehicle on a flat, level surface and engage the parking brake. Place blocks both in front of and behind the front wheels. Break your rear wheel lugs loose, place your floor jack under the rear axle and raise the vehicle. Place jack stands under the rear axle and lower the vehicle on to the jack stands. Remove the jack and remove the rear wheels.

Starting on one side of the vehicle, remove (5) plastic clips and the (3) 10mm screws to loosen your O.E fender liner (**Fig. B & C**).

Fig C

Remove 10mm screws



**Step 2:** To remove the fender, start from the front working toward the rear, pull firmly outward to disconnect the fender from the body of the vehicle.

**NOTE:** *You will hear cracking/ popping noises, this is normal, it's from the clips snapping (they will not be reused).*



For Technical Support/Warranty Information please call 1-800-776-0767  
Smittybilt, 1017 W. 600 N. STE 4, Ogden, UT 84404

## Installation Instructions: Mechanical Installation



Fig. D

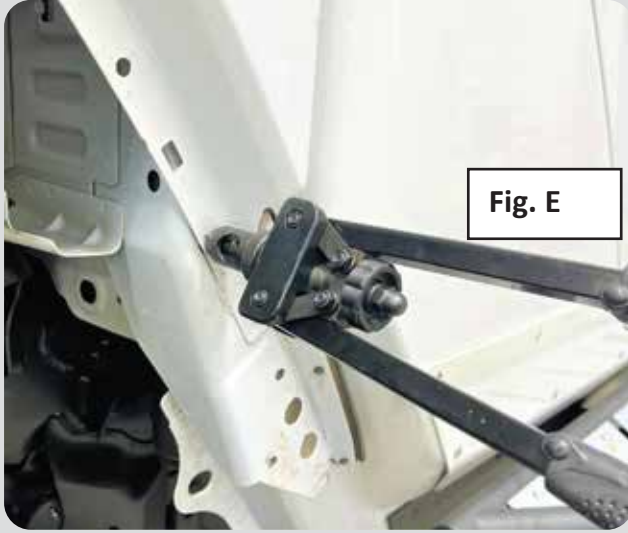


Fig. E

### Step 3:

With the O.E fender and fender liner removed; you will now have to drill out (1) of the OE mounting holes using a size 17/32" drill bit to accept the provided nut-serts into the holes indicated on (Fig. D & Fig. E). Install the nut-sert to the now drilled holes, Use the provided nut-sert tool and secure the nut-sert to the body.

### NOTE:

*If the nut-sert is loose in the hole it will not work properly. For easier, faster installation use the provided nut-sert tool. When drilling, it is strongly recommended to use proper protection equipment I.E; safety glasses, face shield, and gloves. Deburr from drilling.*



### Step 4:

Repeat Steps 1 - 3 for the opposite side



For Technical Support/Warranty Information please call 1-800-776-0767  
Smittybilt, 1017 W. 600 N. STE 4, Ogden, UT 84404

## Installation Instructions: Mechanical Installation

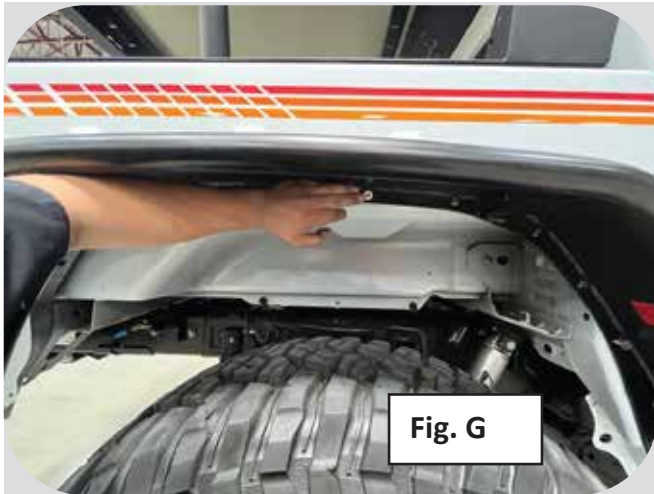


Fig. G

**Step 5:** With the nut-sert installed apply blue painters tape to the area surrounding the fender mounting surface to protect the paint during test fitment, and hold the fender in place (**Fig. G**) and insert the 5/16" flathead bolts into the 2 upper holes and use the 5/16" nylock nuts and washers to hold in place (**Fig H**).



Fig. H



Fig. I

**Step 6:** Insert the remaining bolts into the nut-serts and the remaining nuts (**Fig. I**) and tighten to 15 ft-lbs and repeat the process for the opposite side.

**NOTE: IMPORTANT!** Do **NOT** over-tighten the flat head cap screws, as you may accidentally "spin" the Nut-Sert if you over-tighten!



For Technical Support/Warranty Information please call 1-800-776-0767  
Smittybilt, 1017 W. 600 N. STE 4, Ogden, UT 84404

Congratulations - Installation is now complete!

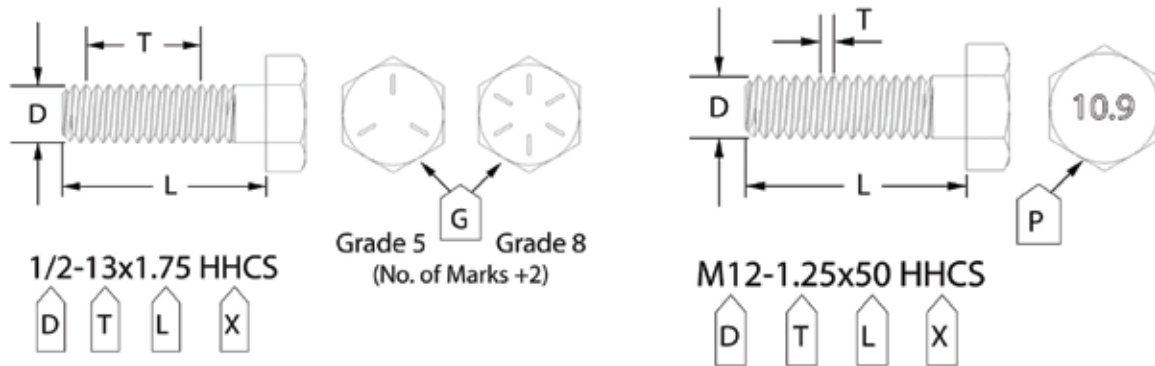


For Technical Support / Warranty Information please call 1-800-776-0767  
Smittybilt, 1017 W 600 N, Suite 4, Ogden, UT 84404

# Bolt Torque Specifications

Use this only as a guide for hardware without a called out torque specification in the instruction manual.

<b>Bolt Torque and ID</b>						
Decimal System			Metric System			
<i>All Torques in Ft. Lbs. Maximums</i>						
Bolt Size	Grade 5	Grade 8	Bolt Size	Class 9.8	Class 10.9	Class 12.9
5/16	15	20	M6	5	9	12
3/8	30	45	M8	18	23	27
7/16	45	60	M10	32	45	50
1/2	65	90	M12	55	75	90
9/16	95	130	M14	85	120	145
5/8	135	175	M16	130	165	210
3/4	185	280	M18	170	240	290



G= Grade (Bolt Strength)  
 D= Nominal Diameter (Inches)  
 T= Thread Count (Threads per Inch)  
 L= Length (Inches)  
 X= Description (Hex Head Cap Screw)

P= Property Class (Bolt Strength)  
 D= Nominal Diameter (Millimeters)  
 T= Thread Pitch (Thread Width, mm)  
 L= Length (Millimeters)  
 X= Description (Hex Head Cap Screw)



For Technical Support/Warranty Information please call 1-800-776-0767  
 Smittybilt, 1017 W. 600 N. STE 4, Ogden, UT 84404



# Notes and Disclaimers

## Product cleaning and maintenance instructions

Stainless Steel Finish – Aluminum polish may be used to polish small scratches and scuffs on the finish. Mild soap, window or glass cleaner may be used to clean the finish. Dual state powder coat finish – Mild soap, window or glass cleaner may be used to clean the finish. In order to protect the finish, you may wax your product on a regular basis with pure carnauba automotive wax. Do not use any types of soap, polish or wax that contains abrasive that could damage the finish. Textured coated finishes should be cleaned with a mild soap on a damp sponge. Do not apply polish or wax that requires to be removed by means of buffing. This type of wax is commonly used at car wash facilities. Chrome Finish – Mild soap, window or glass cleaner may be used to clean the finish. In order to protect the finish, you should wax your product on a regular basis with pure carnauba automotive wax. Do not use any types of soap, polish or wax that contains abrasive that could damage the finish.

## Limited Warranties

SB's products are covered under the following limited warranties only. Note that the duration of the limited warranty differs according to the material and finish of the product purchased. Subject to the duration and conditions of the limited warranty stated below, SB warrants to the original retail purchaser that its products are free from defects in material and workmanship. All other warranties and representations express or implied, are hereby disclaimed, including fitness for merchantability and buyer's intended use or purpose. All parts are sold "AS IS" except for the limited warranties granted herein. Buyer assumes all risks as to the selection, suitability and performance of all goods and products selected. This limited warranty does not cover damage or impairment in any part due to misuse, improper installation, accident or contact with on-road or off-road hazards, product modification, improper or inadequate cleaning and/or maintenance. SB is not responsible for items damaged during shipping. This warranty is not transferable from the original buyer. For the original Buyer to be eligible for the limited warranty coverage, the Buyer must provide proof of purchase. SB strongly recommends returning the warranty registration card.

Customer's remedy hereunder shall be limited only to repair or replacement (at SB's option) of any defective part(s) returned to SB at customer's expense. The determination of whether or not a returned part is defective or subject to coverage under the limited warranties stated herein shall be made at SB's sole discretion. To assure product quality, SB reserves the right to change product design, material, specification and finishes without prior notice to customers. This limited warranty gives you specific legal rights and you may also have other rights, which may vary from state to state. Some states do not allow limitations on how long an implied warranty lasts, so the above limitations may not apply as to you. Also, some states do not allow the exclusion or limitation of incidental or consequential damages, so the above limitations or exclusions may not apply to you. SB reserves the right to discontinue product lines and substitute products or provide other remedies than those listed in this limited warranty for those discontinued products.

## Warning

Rollover and other types of vehicle accidents may result in serious injury or death to you, your passengers and others sharing the road. SB accessories are decorative and are not intended to reduce or avoid injury or damage in the event of an accident. The weight and location of SB accessories may affect your vehicles' handling, stability and performance, creating an increased risk of accident or rollover. Before installing any accessory, check state laws and assure that the accessory will not obscure any lights or interfere with proper operation on your vehicle's safety equipment. Consult your owner's manual and the SB instructions, or additional safety information. SB products, nor the warnings contained herein, are not a substitute for your safe driving. Don't drink and drive, always use seat belts and don't drive faster than conditions permit.



**WARNING: Cancer and Reproductive Harm**  
[www.P65Warnings.ca.gov](http://www.P65Warnings.ca.gov)



For Technical Support/Warranty Information please call 1-800-776-0767  
Smittybilt, 1017 W. 600 N. STE 4, Ogden, UT 84404