

Installation Instructions



JEEP JT/JL Front Fenders
Part # **SB77852**



For Technical Support/Warranty Information please call 1-800-776-0767
Smittybilt, 1017 W. 600 N. STE 4, Ogden, UT 84404

Introduction

Thank you for choosing Smittybilt accessories for your **Jeep JT / JL**. If you would like to view our full range of available accessories.



JEEP®, **JT®** & **JL®** are registered trademarks of Chrysler Motor Company.

Important Notes Before Starting

! IMPORTANT NOTE

Carefully read through this entire instruction manual thoroughly before attempting to install this part.

! WARNING

Serious injury can occur when working on vehicles alone.

When possible, work with another person to reduce risk of injury from strain or other dangers that can occur when working alone.

The following tools will be required to complete the installation of this part:

TOOLS REQUIRED

Drill	Grinder W/ Cutout Wheel and Flap Disc	Needle Nose Pliers
Pry Tool	Cutting Wheel	1/2" Wrench/Socket
10mm Wrench/Socket	3/16" Hex Bit	3/8" Drill Bit
Touch-Up Paint	Blue Painters Tape	3/8" Drive Ratchet



For Technical Support/Warranty Information please call 1-800-776-0767
Smittybilt, 1017 W. 600 N. STE 4, Ogden, UT 84404

Box Contents & Technical Information

! IMPORTANT NOTE

Some applications require modification:

Drilling or trimming of OE sheet metal may be necessary

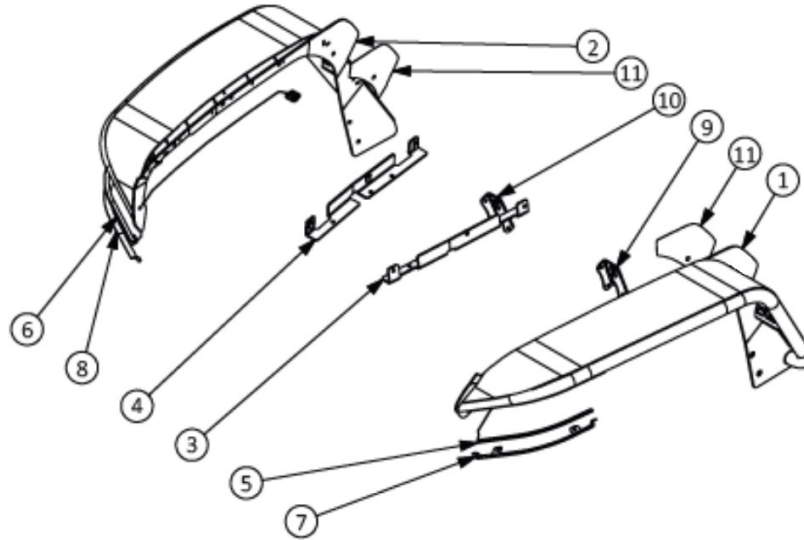


Fig A.

FRONT FENDER ASSEMBLY

BUBBLE	PART NO.	DESCRIPTION	QTY
1	89-19-03-030-DRV	JL/JT FRONT FENDER- DRV	1
2	89-19-03-030-PASS	JL/JT FRONT FENDER- PASS	1
3	89-19-03-030-1	JL/JT FRT FDR INR SUPT-DRV	1
4	89-19-03-030-1M	JL/JT/FRT FDR INR SUPT-PASS	1
5	19-03-030-2	LED TURN SIGNAL ASSEMBLY- DRV	1
6	19-03-030-2M	LED TURN SIGNAL ASSEMBLY-PASS	1
7	89-19-03-030-08	JL/JT FRT FDR LIGHT RETAINER - DRV	1
8	89-19-03-030-08M	JL/JT FRT FDR LIGHT RETAINER - PASS	1
9	89-19-03-030-10	JL/JT FRT FDR MOUNTING BRKT- DRV	1
10	89-19-03-030-10M	JL/JT FRT FDR MOUNTING BRKT- PASS	1
11	81-19-03-030-3	FRONT FENDER LOGO COVER	2



For Technical Support / Warranty Information please call 1-800-776-0767
Smittybilt, 1017 W 600 N, Suite 4, Ogden, UT 84404

Box Contents & Technical Information

FRONT FENDER ASSEMBLY (Cont.)

BUBBLE	PART NO.	DESCRIPTION	QTY
12	92210A584	18-8 SS 5/16"-18 X 7/8" FHSCS 82 DEGREE COUNTERSINK	8
13	92210A176	18-8 SS 5/16"-18 X 3-1/4" FHSCS 82 DEGREE COUNTERSINK	2
14	92210A599	18-8 SS 5/16"-18 X 4" FHSCS 82 DEGREE COUNTERSINK	2
15	91201A029	STEEL WSHR 0.281" ID X 0.625" OD X 0.125" THICK	4
16	92949A539	18-8 SS 1/4"-20 X 5/8" BHCS	4
17	91950A029	316 SS SAE Washer 0.281" ID X 0.625" OD X 0.065" THICK	4
18	97135A220	STEEL NYLOCK GRADE 8 YZNC 5/16"-18	8
19	90850A150	GRADE 9 STEEL WSHR YZNC 5/16"	8
20	90822A610	410 SS 1/4"-20 X 3/4" FSTB	6
21	90850A100	GRADE 9 STEEL WSHR YZNC 1/4"	6
22	90-44214	CABLE TIE, STANDARD, 6" LONG	12
23	S-18662	4" X 1/2" 3M F9460PC VHB ADHESIVE 2MIL THICK	4
24	90166A121	18-8 SS 5/16"-18 X 3/4" FHCS	2



For Technical Support/Warranty Information please call 1-800-776-0767
Smittybilt, 1017 W. 600 N. STE 4, Ogden, UT 84404

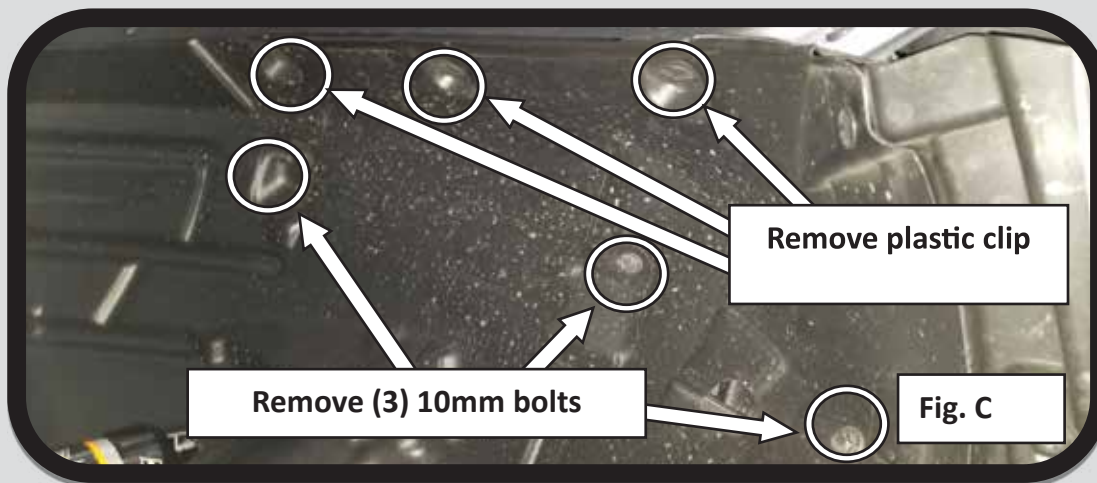
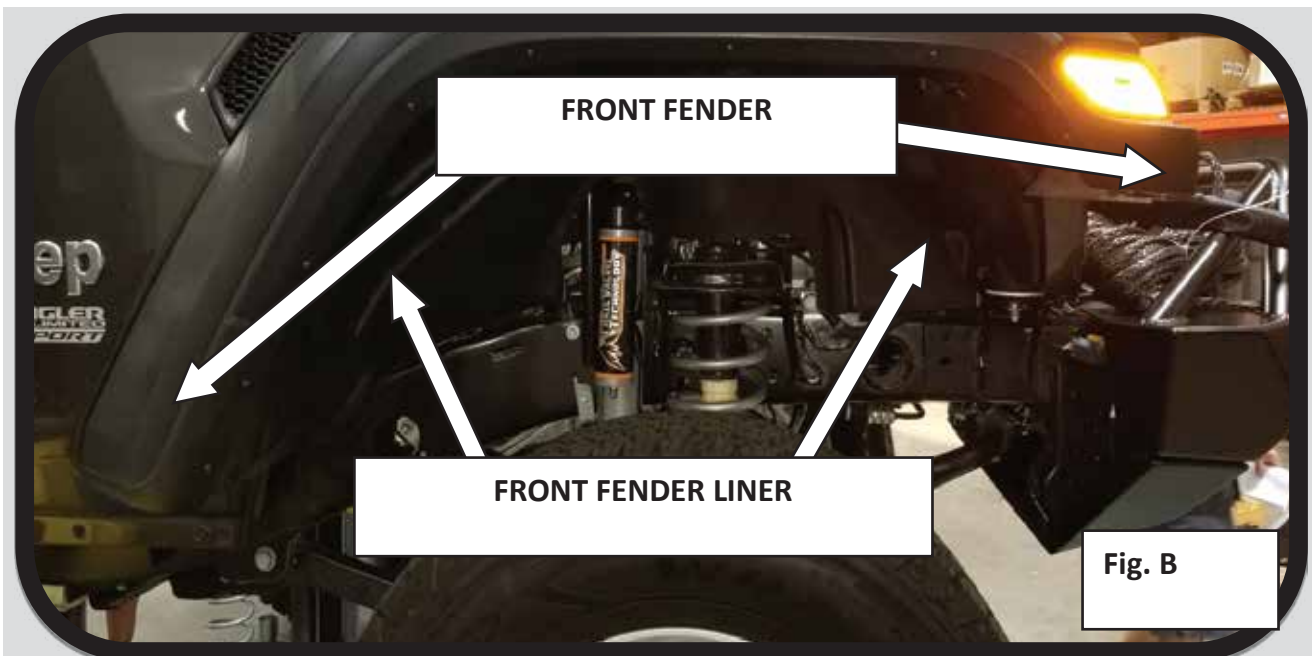
Installation Instructions: Stock Fender Removal

MECHANICAL INSTALLATION

Step 1: Place the vehicle on a flat, level surface and engage the vehicle parking brake. Place blocks both in front of and behind the rear wheels. Break your front wheel lugs loose, place your floor jack under the front axle and raise the vehicle. Place jack stands under the front axle and lower the vehicle onto the jack stands. Remove the jack and remove the front wheels.

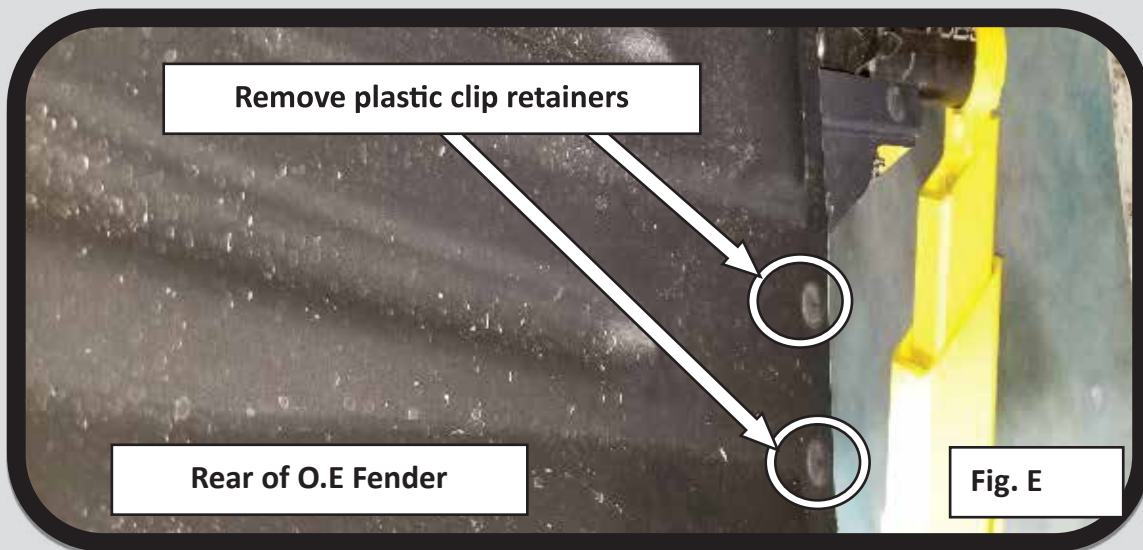
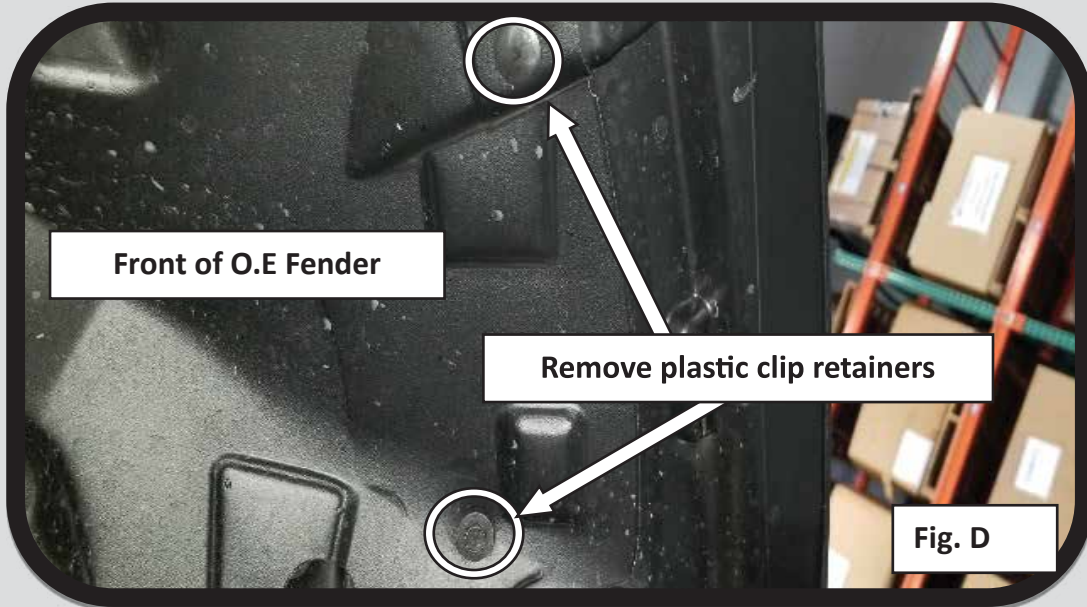
Step 2: Starting on one side of the vehicle, remove your O.E fender liner, remove (7) plastic retaining clips using body clip pliers or a flat-head screw-driver and remove (3) 10mm bolts (Fig. B-E).

NOTE: *The fender liner will come off with the fender as one assembly.*



For Technical Support/Warranty Information please call 1-800-776-0767
Smittybilt, 1017 W. 600 N. STE 4, Ogden, UT 84404

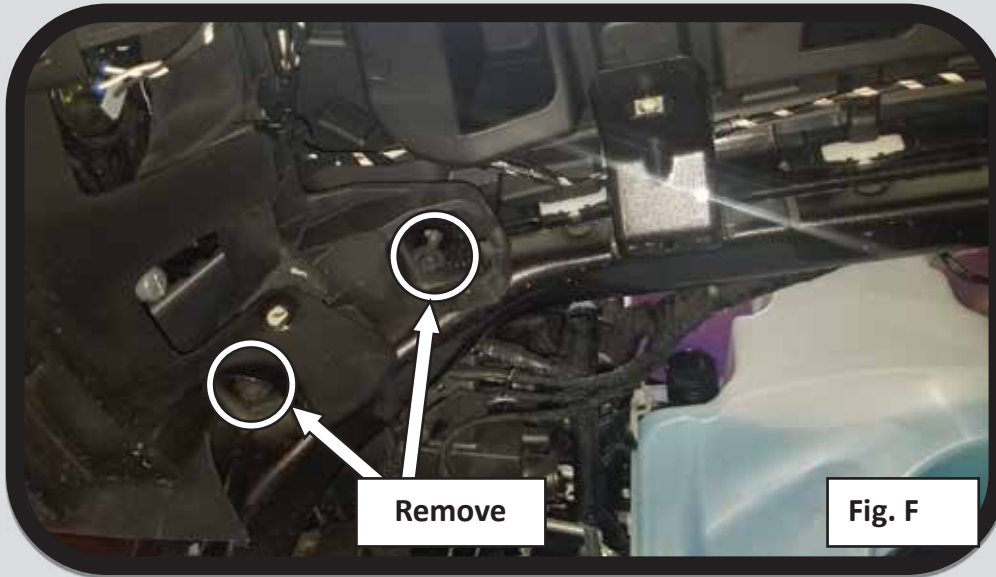
Installation Instructions: Stock Fender Removal



For Technical Support/Warranty Information please call 1-800-776-0767
Smittybilt, 1017 W. 600 N. STE 4, Ogden, UT 84404

Installation Instructions: Stock Fender Removal

Step 3: Disconnect the front turn signal connector from the O.E fender. With the fender liner out of the way Remove the (2) 10mm O.E bolts located behind the turn signal bezel securing the O.E front fender in place (**Fig. F**).



NOTE:

You will hear cracking/ popping noises, this is normal, it's from the clips snapping (they will not be reused).

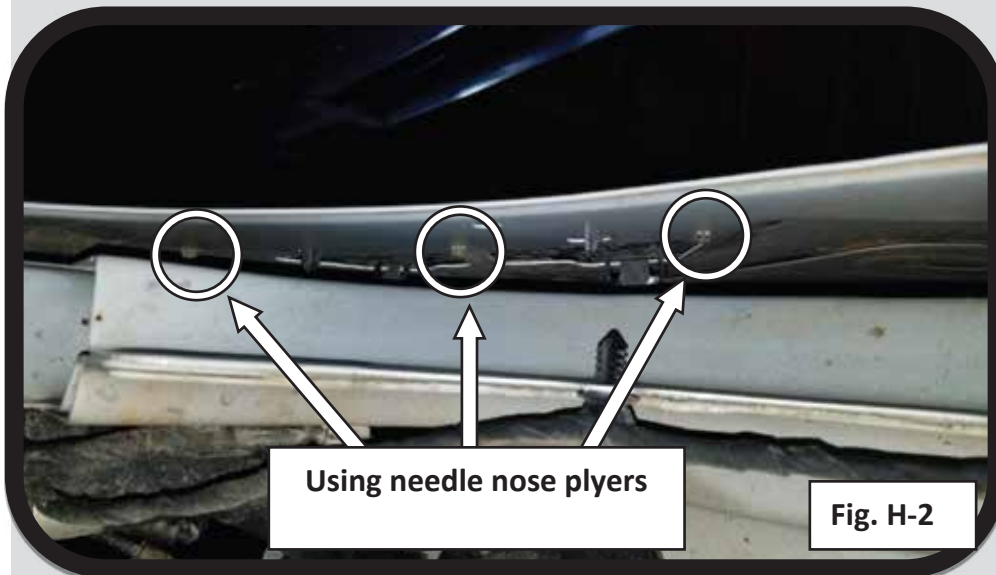
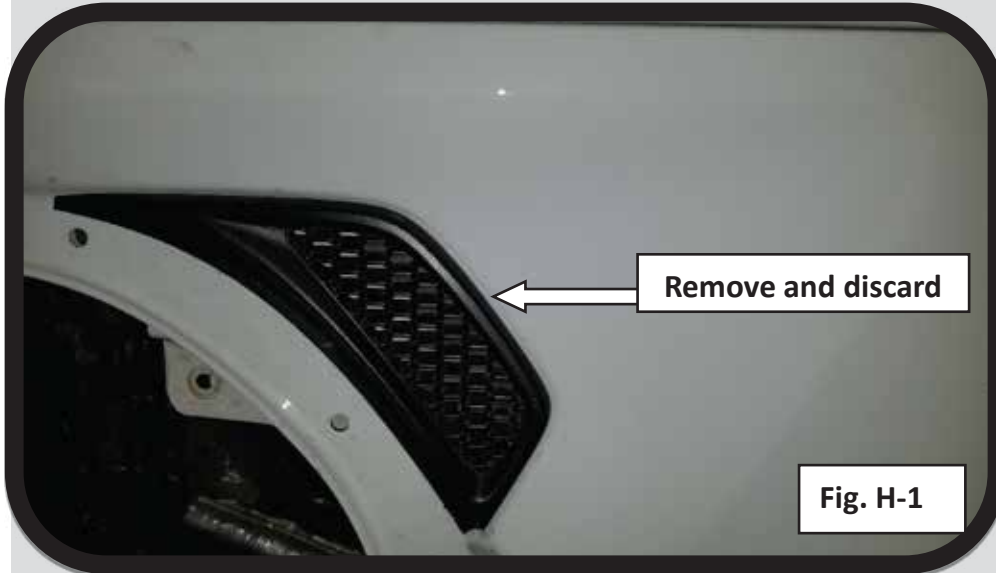
Step 3: With the O.E hardware removed, remove your O.E fender and fender liner. Starting from the front working toward the rear, pull firmly outward to remove the fender from the body of the vehicle (**Fig. G**).



For Technical Support/Warranty Information please call 1-800-776-0767
Smittybilt, 1017 W. 600 N. STE 4, Ogden, UT 84404

Installation Instructions: Stock Fender Removal

Step 5: Remove the O.E front fender air outlet plate, using needle nose pliers, pinch the three plastic clips behind the body panel (Fig. H-1 & H-2).



For Technical Support/Warranty Information please call 1-800-776-0767
Smittybilt, 1017 W. 600 N. STE 4, Ogden, UT 84404

Installation Instructions: Fender & Support Tab Removal



Step 6:

Once stock fender is removed, remove the (stock front fender support tab) by using a hand tool with cutting wheel. Sand and paint to protect bare metal. (Fig. I-1 & I-2)



Note: Use blue masking tape to protect the OEM fender surface surrounding the fender flare mounting surface and to cover any areas you may not want exposed to sparks. (wear safety goggles at all times)



For Technical Support/Warranty Information please call 1-800-776-0767
Smittybilt, 1017 W. 600 N. STE 4, Ogden, UT 84404

Installation Instructions: Inner Support Bracket

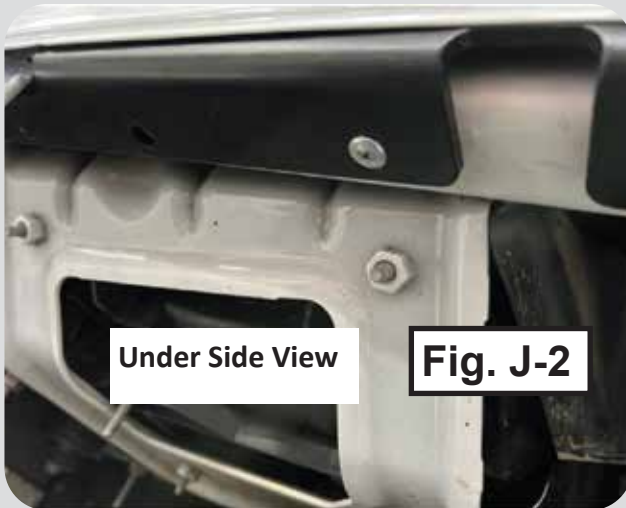


Fig. J-1

Step 7:

With fenders removed mount the inner support bracket with self tapping screw. Slide the inner support bracket into position, center the holes and hold in place with a single 1/4"-20 self tapping screw (Provided in hardware pack.)

(Fig. J-1 & J-2)



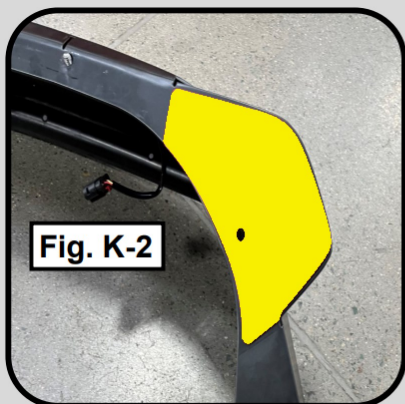
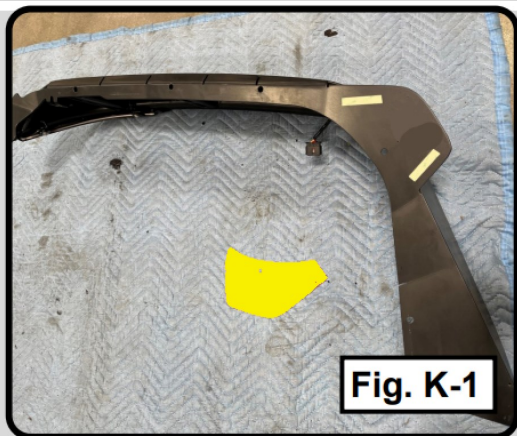
Under Side View

Fig. J-2



For Technical Support/Warranty Information please call 1-800-776-0767
Smittybilt, 1017 W. 600 N. STE 4, Ogden, UT 84404

Installation Instructions: Backing Plate



Step 8:

Clean the rear of the backing plate where the Smittybilt logo is located.

Using **(2) Pieces of Double-Sided VHB adhesive** supplied in the hardware pack lay them onto the fenders (**Fig. K-1**) then attach the yellow backing plate to the fenders (**Fig K-2**).



For Technical Support / Warranty Information please call 1-800-776-0767
Smittybilt, 1017 W 600 N, Suite 4, Ogden, UT 84404

Installation Instructions: LED Light Strip

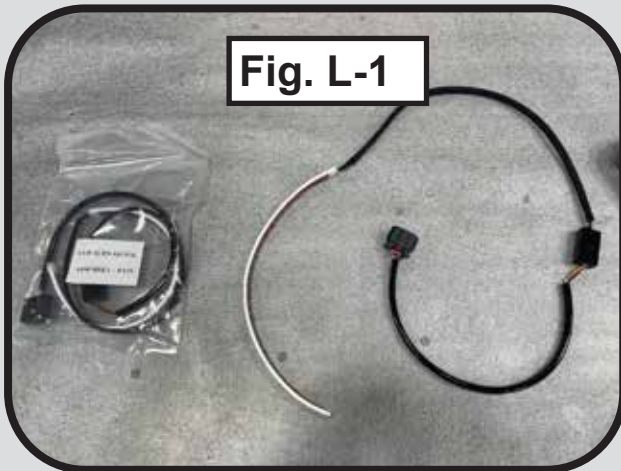


Fig. L-1

Step 9:

Slide the LED Light Strip through the reliefs in the fender brackets starting at the rear of the fender and going through to the front (**Fig. L-2**)

Then install LED light onto the bracket by removing the adhesive backing and carefully conforming it to the brackets shape.

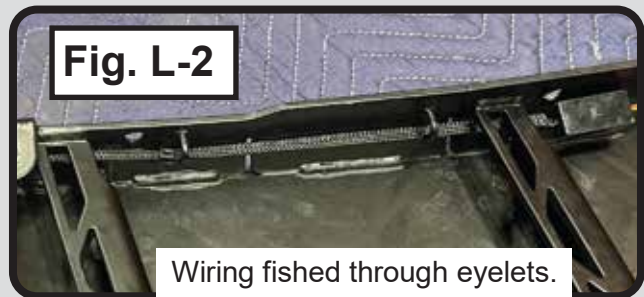


Fig. L-2

Wiring fished through eyelets.

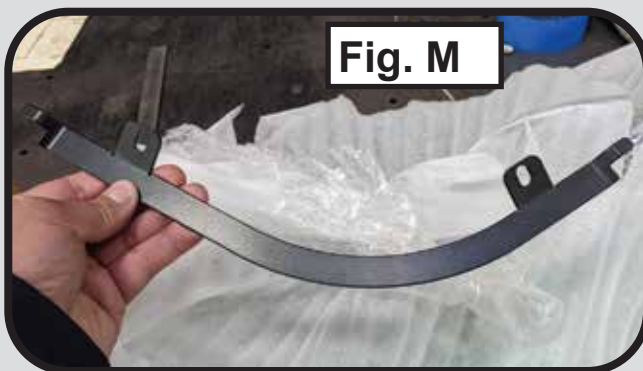


Fig. M

NOTE:

Make sure to orientate the bracket and light in the correct position before sticking the adhesive to bracket. The LED strip sits between the bracket and fender. The adhesive side of the Light attaches to the loose bracket with the wiring pointed toward the inner front part of the fender. Ensure the lighted surface is facing outward from the fender.

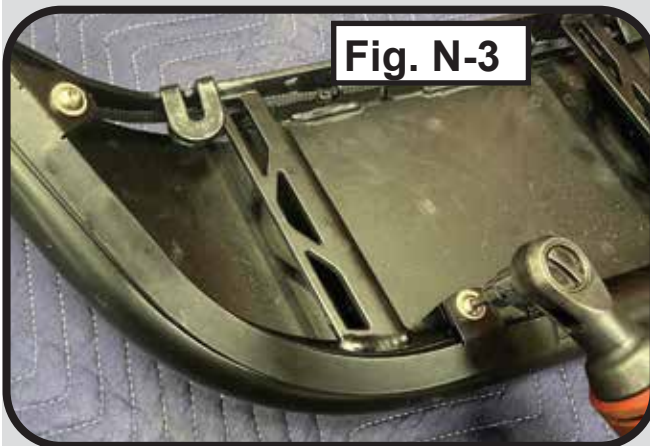


For Technical Support/Warranty Information please call 1-800-776-0767
Smittybilt, 1017 W. 600 N. STE 4, Ogden, UT 84404

Installation Instructions: LED Light Strip

Step 10:

Install LED light strip by tilting one tab into fender and rotating the other tab to the side with downward pressure to lock it into the fender (Fig. N-1 & N-2).



Step 11: Insert a 1/8" thick washer between tab and bracket and fasten it with a 1/4"-20 X 5/8" bolt and .0625" thick washer provided in the hardware pack. Tighten to 84 in-lbs.

NOTE:

If there is a gap between the light and the bottom of the fender tube then remove the bracket and bend the bracket upward in the middle to create pressure against the fender.



For Technical Support/Warranty Information please call 1-800-776-0767
Smittybilt, 1017 W. 600 N. STE 4, Ogden, UT 84404

Installation Instructions: Mechanical Installation

Step 12:

Now you may mount the fenders to the Jeep. Fasten one of the 5/16"-18 X 7/8" flat head screws supplied in hardware pack to secure the fenders to the body, then you may work your way lining up and fastening the rest.

(Fig. O-1 & O-2).



Fig. O-1



Fig. O-2

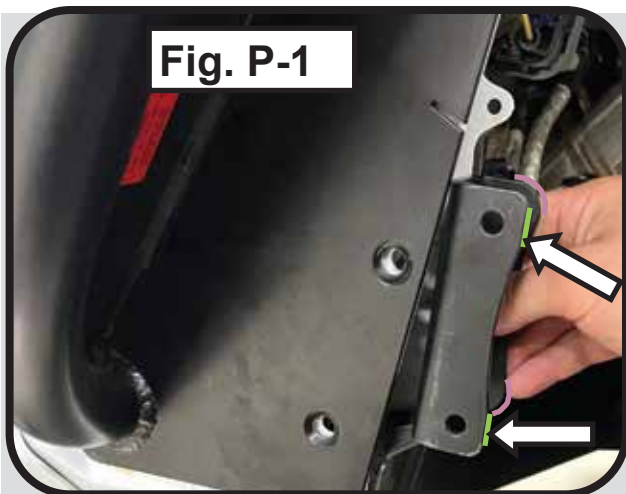


Fig. P-1

Step 13:

Insert the inner bracket to the base of the fender and body with the flat edges toward the outside of the body and rounded edge to the inside of fender. (Fig. P-1)

Use this bracket and the fender to mark and drill the additional holes not stamped in the OE fender and drill through to the inner fender well.

Secured with the supplied flat head screws 3-1/4" long and 4" long as well as washer and nylock nuts (Fig. P-2)



Bottom of Driver
Fender Viewed from
Front of Vehicle

Fig. P-2

Note: Fasten the hardware supplied with the longer bolt on the bottom of the bracket and shorter bolt on top.



For Technical Support/Warranty Information please call 1-800-776-0767
Smittybilt, 1017 W. 600 N. STE 4, Ogden, UT 84404

Installation Instructions: Mechanical Installation



Fig. Q

Step 14:

Fasten the 5/16"-18 X 3/4" bolt & a 5/16" washer along with the 5/16"-18 nylock nut to the OE fender support bracket. **(Fig. Q)**. Tighten all 5/16" Bolts to 15ft-lbs.



Fig. R

Step 15:

Reconnect the light harness by inserting the male connector to the female connector until it clicks then secure the red locking tab by sliding it inwards. **(Fig. R)**



Fig. S

LED STRIP lights flashing

Note: After installing check all hardware is tight and lights are working properly. **(Fig. S)** they should be solid white light when the vehicle running lights are on and flash yellow with hazards or turn signal indicators.



For Technical Support/Warranty Information please call 1-800-776-0767
Smittybilt, 1017 W. 600 N. STE 4, Ogden, UT 84404

Congratulations - Installation is now complete!



For Technical Support / Warranty Information please call 1-800-776-0767
Smittybilt, 1017 W 600 N, Suite 4, Ogden, UT 84404

Bolt Torque Specifications

Use this only as a guide for hardware without a called out torque specification in the instruction manual.

Bolt Torque and ID						
Decimal System			Metric System			
<i>All Torques in Ft. Lbs. Maximums</i>						
Bolt Size	Grade 5	Grade 8	Bolt Size	Class 9.8	Class 10.9	Class 12.9
5/16	15	20	M6	5	9	12
3/8	30	45	M8	18	23	27
7/16	45	60	M10	32	45	50
1/2	65	90	M12	55	75	90
9/16	95	130	M14	85	120	145
5/8	135	175	M16	130	165	210
3/4	185	280	M18	170	240	290

1/2-13x1.75 HHCS
D T L X

Grade 5 Grade 8
 (No. of Marks +2)

M12-1.25x50 HHCS
D T L X

G= Grade (Bolt Strength)
 D= Nominal Diameter (Inches)
 T= Thread Count (Threads per Inch)
 L= Length (Inches)
 X= Description (Hex Head Cap Screw)

P= Property Class (Bolt Strength)
 D= Nominal Diameter (Millimeters)
 T= Thread Pitch (Thread Width, mm)
 L= Length (Millimeters)
 X= Description (Hex Head Cap Screw)



For Technical Support/Warranty Information please call 1-800-776-0767
 Smittybilt, 1017 W. 600 N. STE 4, Ogden, UT 84404

Notes and Disclaimers

Product cleaning and maintenance instructions

Stainless Steel Finish – Aluminum polish may be used to polish small scratches and scuffs on the finish. Mild soap, window or glass cleaner may be used to clean the finish. Dual state powder coat finish – Mild soap, window or glass cleaner may be used to clean the finish. In order to protect the finish, you may wax your product on a regular basis with pure carnauba automotive wax. Do not use any types of soap, polish or wax that contains abrasive that could damage the finish. Textured coated finishes should be cleaned with a mild soap on a damp sponge. Do not apply polish or wax that requires to be removed by means of buffing. This type of wax is commonly used at car wash facilities. Chrome Finish – Mild soap, window or glass cleaner may be used to clean the finish. In order to protect the finish, you should wax your product on a regular basis with pure carnauba automotive wax. Do not use any types of soap, polish or wax that contains abrasive that could damage the finish.

Limited Warranties

SB's products are covered under the following limited warranties only. Note that the duration of the limited warranty differs according to the material and finish of the product purchased. Subject to the duration and conditions of the limited warranty stated below, SB warrants to the original retail purchaser that its products are free from defects in material and workmanship. All other warranties and representations express or implied, are hereby disclaimed, including fitness for merchantability and buyer's intended use or purpose. All parts are sold "AS IS" except for the limited warranties granted herein. Buyer assumes all risks as to the selection, suitability and performance of all goods and products selected. This limited warranty does not cover damage or impairment in any part due to misuse, improper installation, accident or contact with on-road or off-road hazards, product modification, improper or inadequate cleaning and/or maintenance. SB is not responsible for items damaged during shipping. This warranty is not transferable from the original buyer. For the original Buyer to be eligible for the limited warranty coverage, the Buyer must provide proof of purchase. SB strongly recommends returning the warranty registration card.

Customer's remedy hereunder shall be limited only to repair or replacement (at SB's option) of any defective part(s) returned to SB at customer's expense. The determination of whether or not a returned part is defective or subject to coverage under the limited warranties stated herein shall be made at SB's sole discretion. To assure product quality, SB reserves the right to change product design, material, specification and finishes without prior notice to customers. This limited warranty gives you specific legal rights and you may also have other rights, which may vary from state to state. Some states do not allow limitations on how long an implied warranty lasts, so the above limitations may not apply as to you. Also, some states do not allow the exclusion or limitation of incidental or consequential damages, so the above limitations or exclusions may not apply to you. SB reserves the right to discontinue product lines and substitute products or provide other remedies than those listed in this limited warranty for those discontinued products.

Warning

Rollover and other types of vehicle accidents may result in serious injury or death to you, your passengers and others sharing the road. SB accessories are decorative and are not intended to reduce or avoid injury or damage in the event of an accident. The weight and location of SB accessories may affect your vehicles' handling, stability and performance, creating an increased risk of accident or rollover. Before installing any accessory, check state laws and assure that the accessory will not obscure any lights or interfere with proper operation on your vehicle's safety equipment. Consult your owner's manual and the SB instructions, or additional safety information. SB products, nor the warnings contained herein, are not a substitute for your safe driving. Don't drink and drive, always use seat belts and don't drive faster than conditions permit.



WARNING: Cancer and Reproductive Harm
www.P65Warnings.ca.gov



For Technical Support/Warranty Information please call 1-800-776-0767
Smittybilt, 1017 W. 600 N. STE 4, Ogden, UT 84404