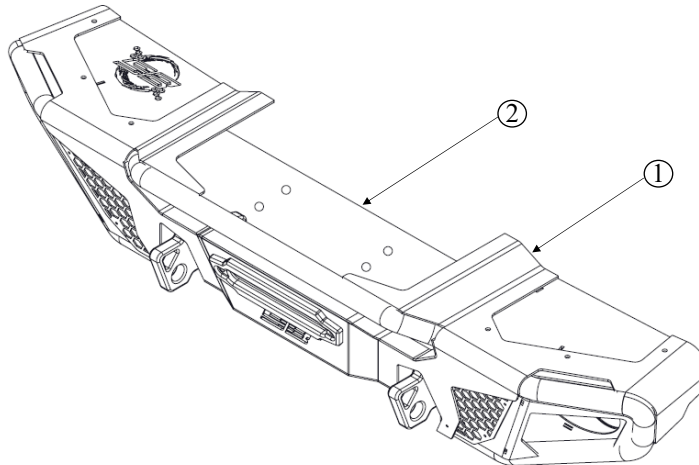




Installation Instructions: (Part # SB77783)

NOTE: Carefully read entire instructions thoroughly before attempting to install this part.



SB77783 Apollo Front Bumper	Qty.	ID
BUMPER 77783	1	1
WINCH CRADLE	1	2
LIGHT BRACKET MOUNT	1	
WINCH CRADLE BRACKET	2	
BOLT PLATES	2	
D-RINGS	2	
WINCH CRADLE BRACKET BOLTS -12MM X 40MM	4	
25MM x 12MM WASHERS	12	
D-RING BOLTS BUTTON HEAD - HEX 8MM X 50MM	4	
D-RING BOLT HEX - 8MM X 50MM	2	
BRACKET WINCH STEM BOLTS -10MM X 30MM	2	
BRACKET WINCH HEX BOLT-10MM X 30MM	2	
BOLT PLATES	2	
12MM NUTS	4	
4MM BUTTON HEAD BOLTS	8	
4MM NYLOCK NUTS	8	
4MM WASHER	16	

For Technical Support/Warranty Information please call 310-762-9944



Installation Instructions: (Part # SB77783)

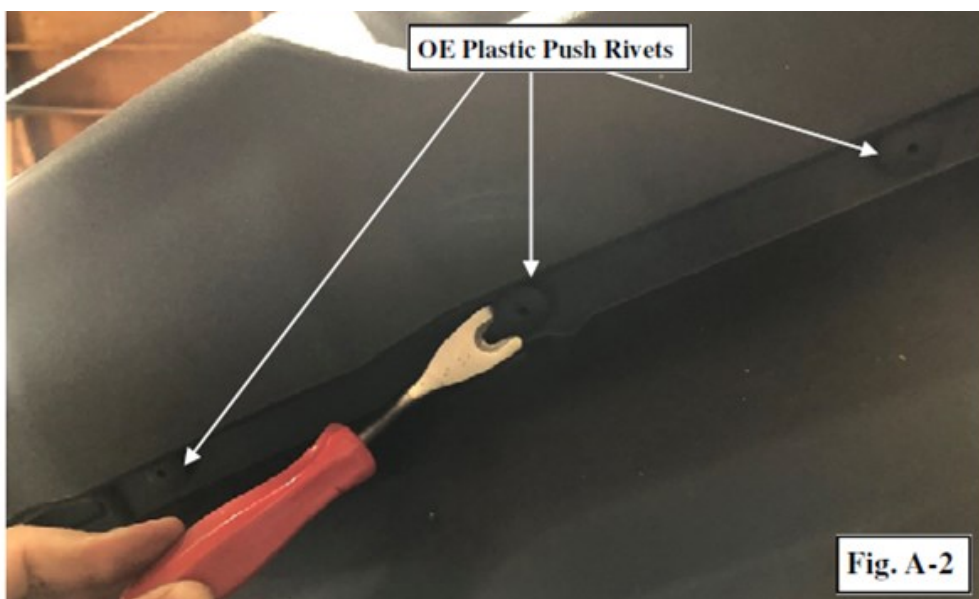
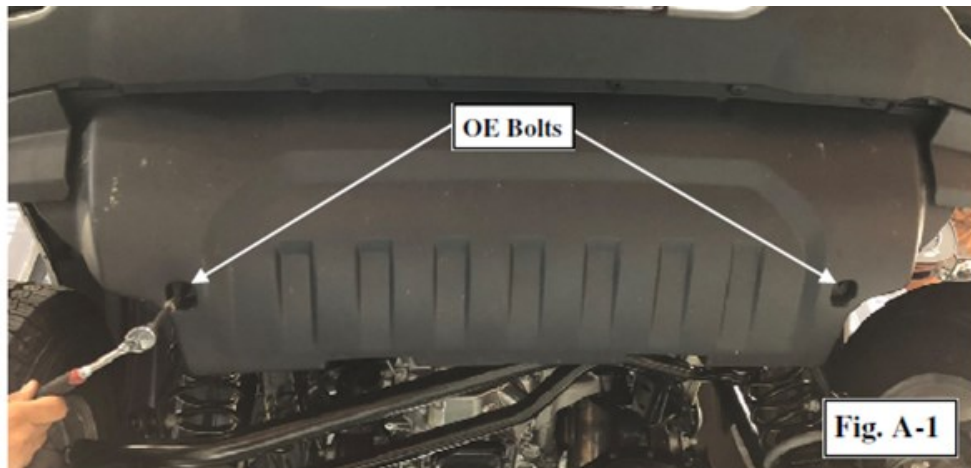
INSTALLATION:

NOTE : Carefully read through entire instructions before attempting to install this kit. This kit fits both 2007-2018 JK & 2018+JL 2dr and 4dr models.

Park the vehicle on a flat level surface, chock all four wheels and make sure that parking brake is engaged before starting this installation procedure.

NOTE : Installation performed on Jeep Sahara and Jeep Rubicon will be similar.

Step 1 : Remove the (2) OE bolts and (8) OE plastic push rivets securing the plastic skid plate to the OE metal skid plate. (Fig. A-1 & Fig. A-2)

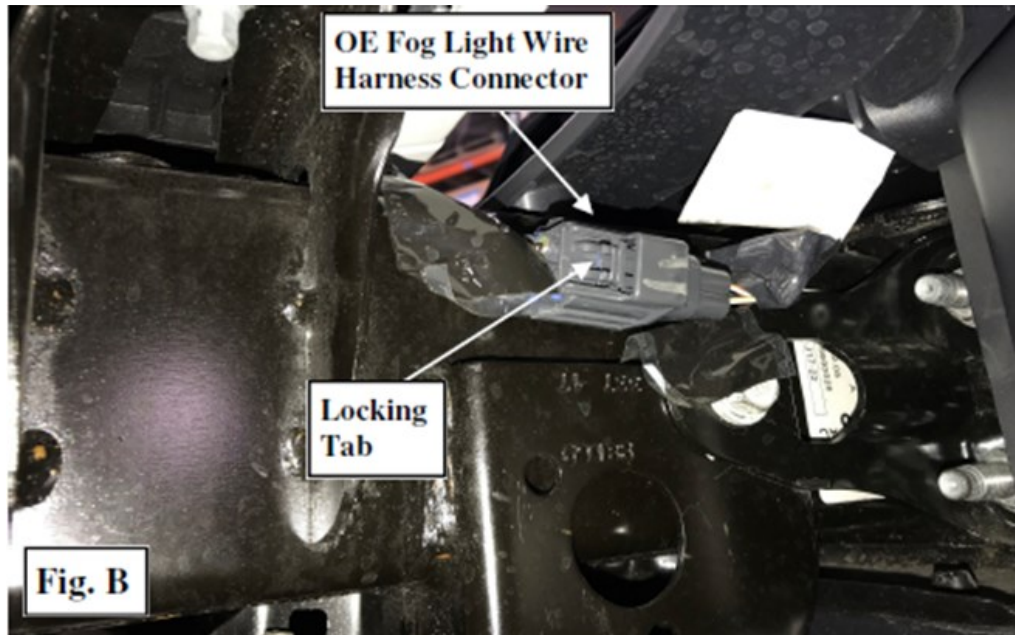


For Technical Support/Warranty Information please call 310-762-9944

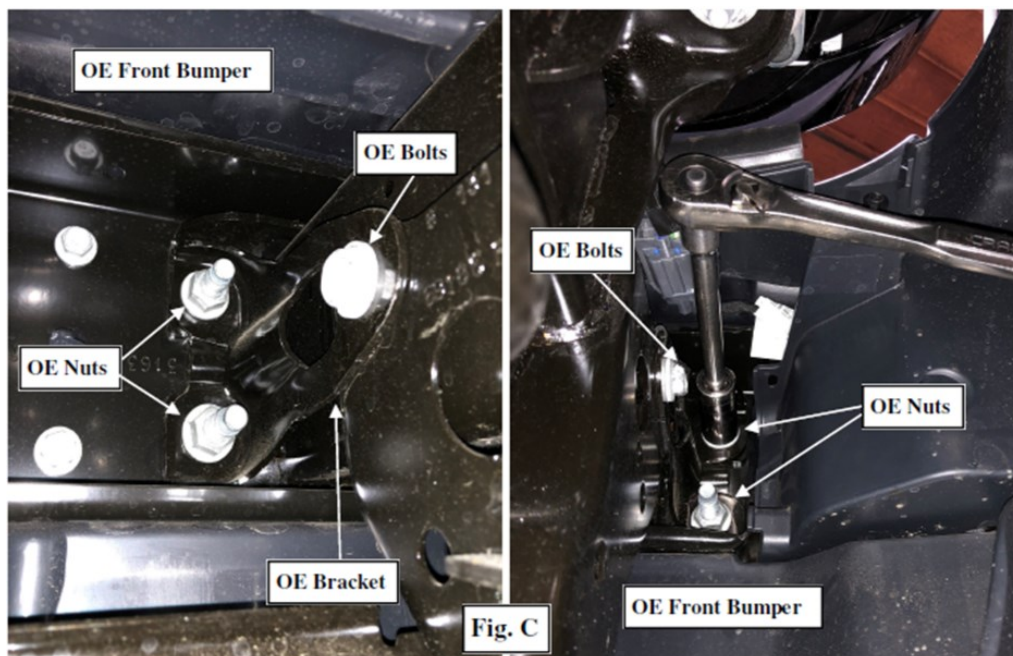


Installation Instructions: (Part # SB77783)

Step 2 : Depress locking tab and disconnect the OE for light wire harness connector located on the passenger side of the vehicle. (Fig. B)



Step 3 : Remove the (2 Per Side) OE nuts and (1 Per Side) OE bolts securing the OE front bumper and brackets to the frame. (Fig. C)



For Technical Support/Warranty Information please call 310-762-9944



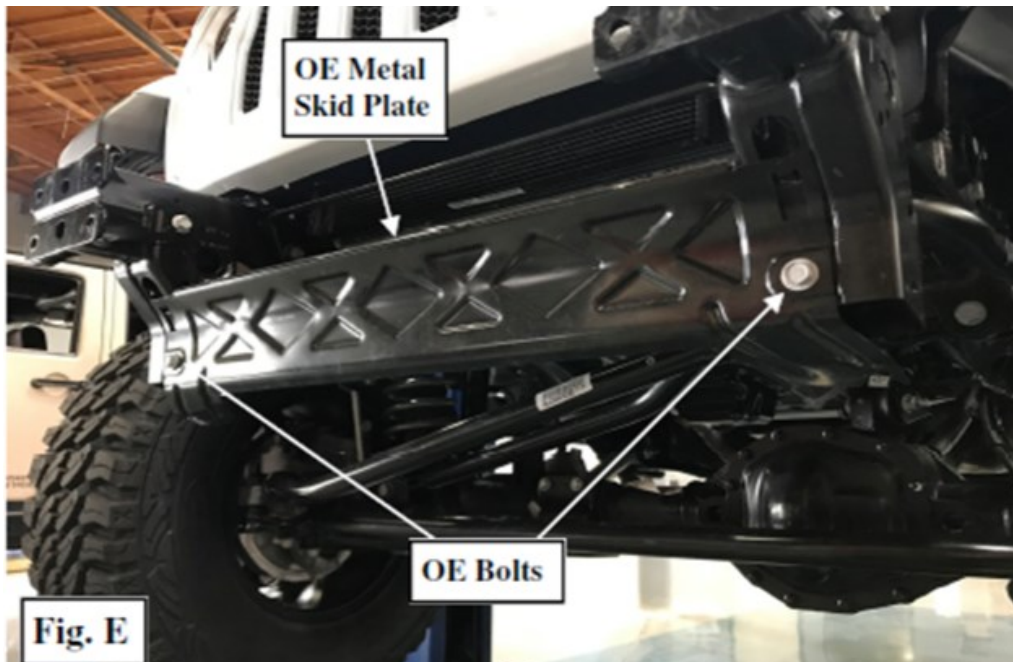
Installation Instructions: (Part # SB77783)

Step 4 : Remove the upper bumper plastic trim by removing (2) OE push pins. (Fig. D)



Step 5 : Carefully remove the OE front bumper from the vehicle.

Step 6 : Remove the (2) OE bolts securing the OE metal skid plate and remove the metal skid plate from the frame rails. Save OE hardware for re-installation. (Fig. E)



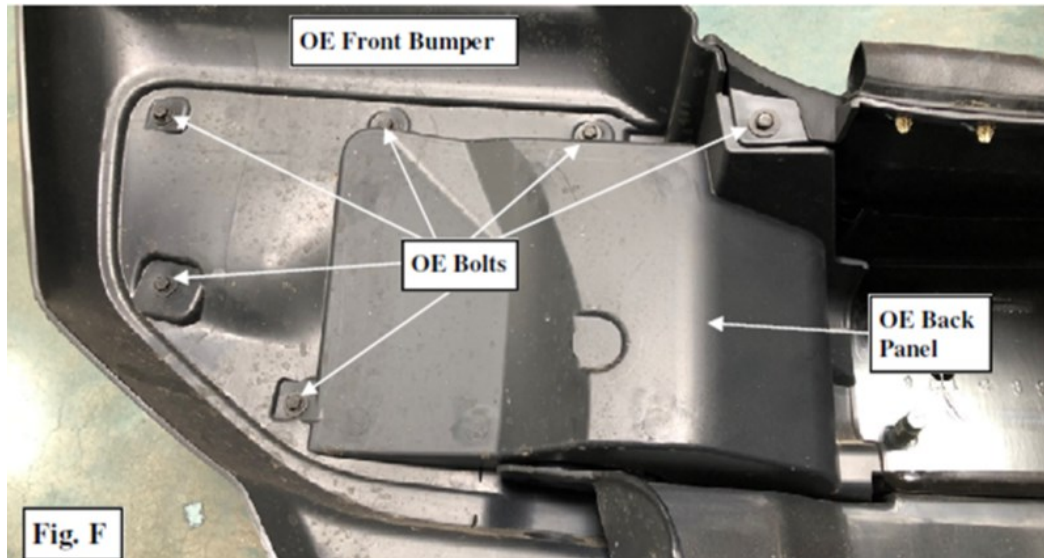
For Technical Support/Warranty Information please call 310-762-9944



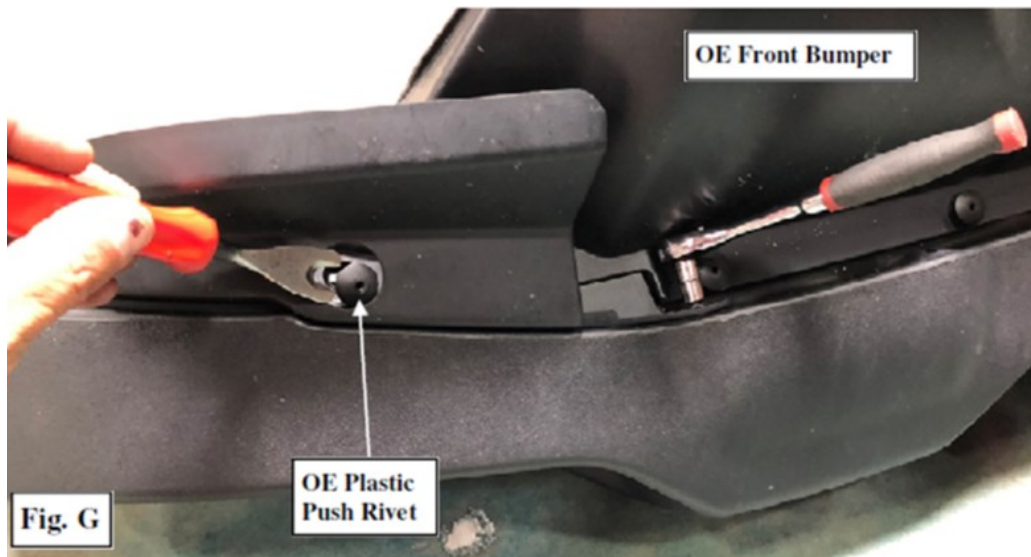
Installation Instructions: (Part # SB77783)

NOTE : If reinstalling the OE LED lights or OE sport fog, lights perform step 9.

Step 7 : Using a 7mm socket, remove the (6 Per Side) OE screws securing the OE back panels to the OE front bumper. (Fig. F)



Step 8 : Remove the (1 Per Side) OE plastic push rivet. Using a 7mm socket, remove the (1 Per Side) remaining OE screw securing the OE back panels to the OE front bumper. Remove the OE back panel from the OE front bumper. (Fig. G)

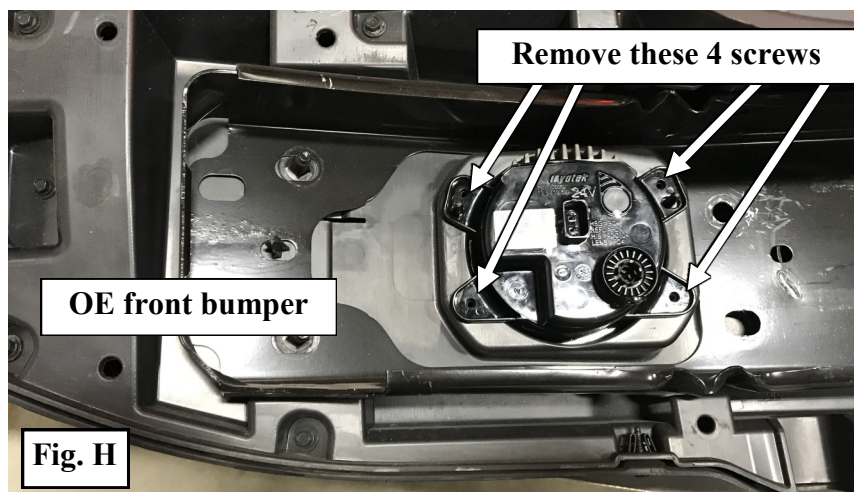


For Technical Support/Warranty Information please call 310-762-9944

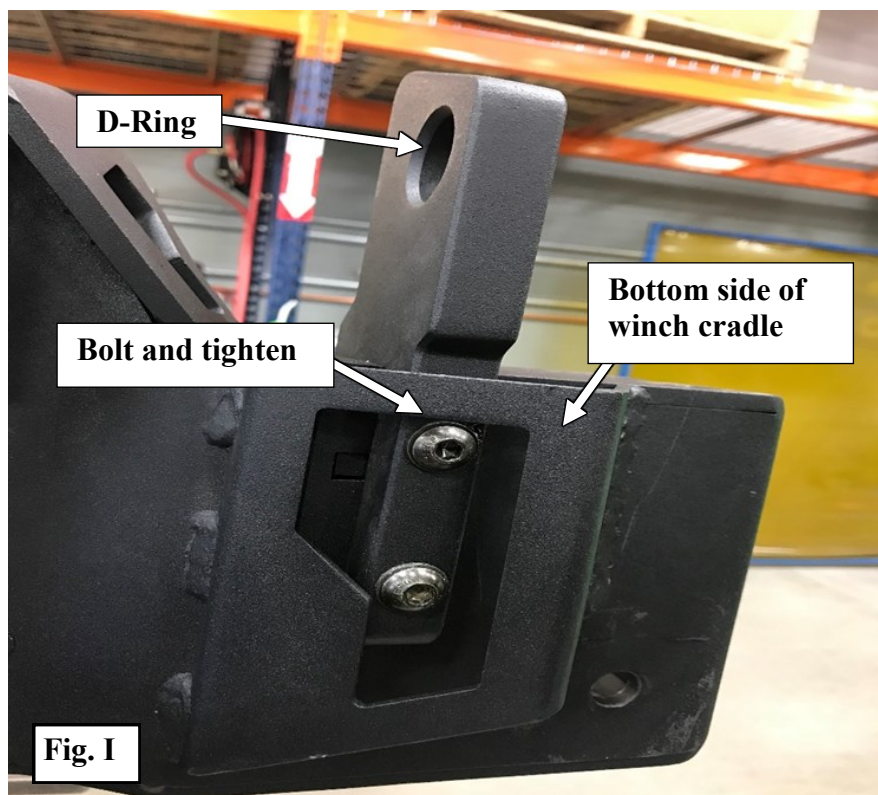


Installation Instructions: (Part # SB77783)

Step 9 : If OE bumper is equipped with fog lights, disconnect the wiring harness and remove the (4) screws securing the fog lights to the bumper passenger and driver (**Fig. H**). Set the lights aside for reinstallation into new bumper.



Step 10: Bolt D-ring to bottom side of winch cradle using supplied (2) Hex bolt 8mm x 50mm per side and tighten. (**Fig. I**)

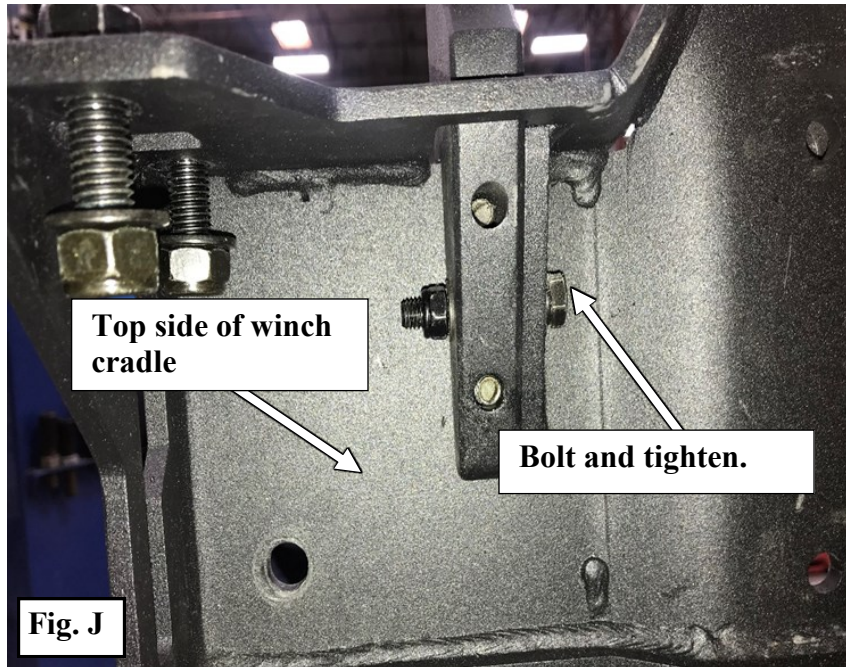


For Technical Support/Warranty Information please call 310-762-9944

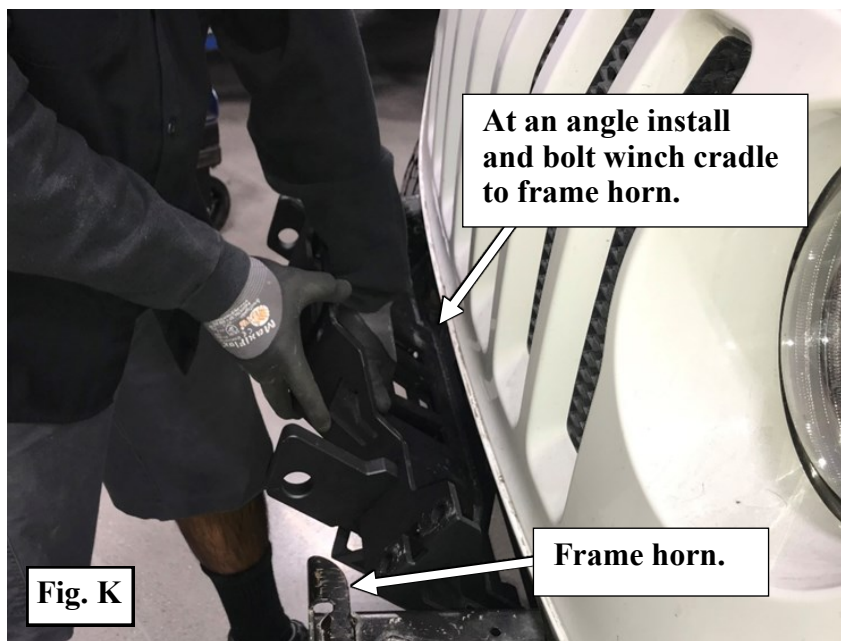


Installation Instructions: (Part # SB77783)

Step 11: Install hardware 8mm x 50mm Hex bolt to top side of D-ring to winch cradle and Tighten. (Fig. J)



Step 12: At an angle install (4) Hardware 12mm x 40mm, bolt winch cradle to frame horn. and tighten. (Fig. K)

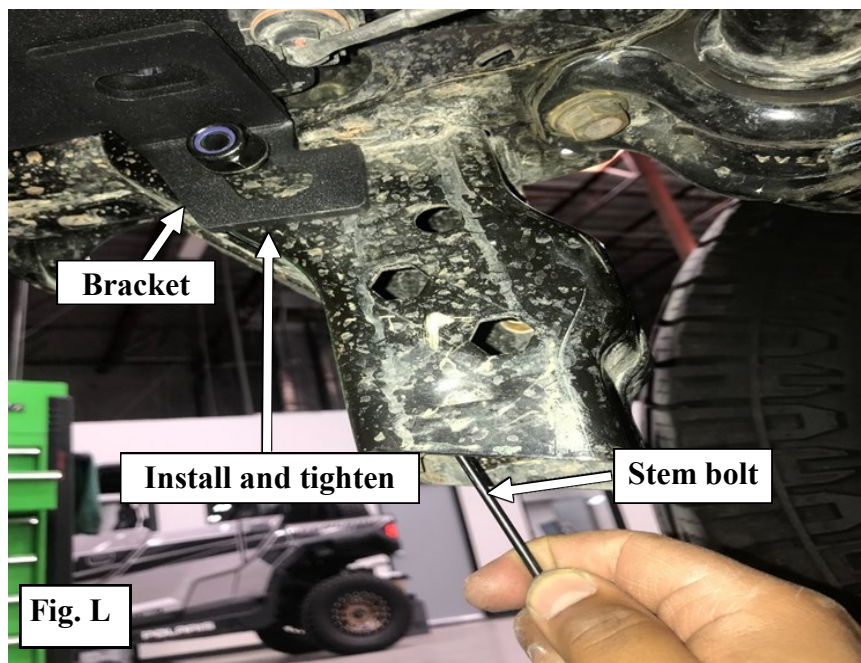


For Technical Support/Warranty Information please call 310-762-9944



Installation Instructions: (Part # SB77783)

Step 13: Install bracket and (1) per side 10mm stem bolt with washers to bottom side of winch cradle and frame horn, cut stem bolt bracket inside frame horn, and tighten Passenger and driver. (Fig. L, L-1)

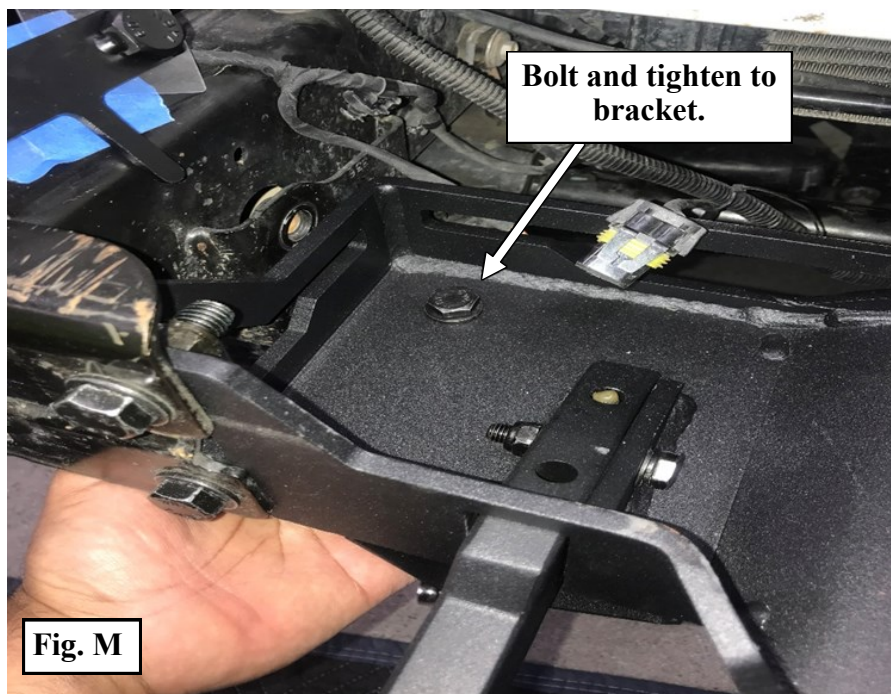


For Technical Support/Warranty Information please call 310-762-9944



Installation Instructions: (Part # SB77783)

Step 14: Install hardware (2) 10mm x 35mm bolt with washers from top side of winch cradle passenger and driver. (Fig. M)



Step 15: If installing a winch do so at this time, following the instructions provided with the winch (Fig. N) tighten the mounting bolts to the specs given with the winch.



For Technical Support/Warranty Information please call 310-762-9944

Smittybilt, 400 W. Artesia, Compton, CA 90220



Installation Instructions: (Part # SB77783)

Step 16: (This will require two people.) Install bolt plates with plastic cover to bumper, install OE fog lights then install bumper to frame horn adjust and tighten. Connect fog lights and carefully secure it out of the way of pinch points or moving parts. (Fig. O)



Step 17: If installing light bar use provided light bar bracket, bolt to top section of bumper and tighten. (Fig. P) use torque specs provided for all hardware; bumper installation is complete. (Fig. Q)



For Technical Support/Warranty Information please call 310-762-9944

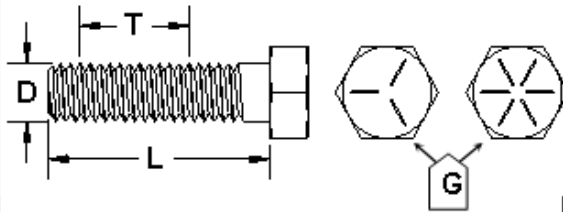
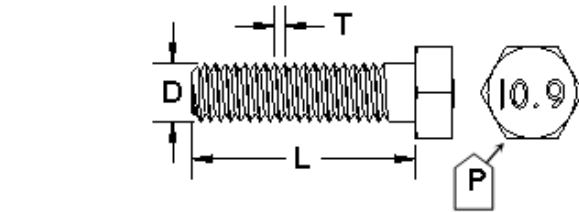
Smittybilt, 400 W. Artesia, Compton, CA 90220



Installation Instructions: (Part # SB77783)

Use this only as a guide for hardware without a called out torque specification in the instruction manual.

Bolt Torque and ID						
Decimal System			Metric System			
All Torques in Ft. Lbs. Maximums						
Bolt Size	Grade 5	Grade 8	Bolt Size	Class 9.8	Class 10.9	Class 12.9
5/16	15	20	M6	5	9	12
3/8	30	45	M8	18	23	27
7/16	45	60	M10	32	45	50
1/2	65	90	M12	55	75	90
9/16	95	130	M14	85	120	145
5/8	135	175	M16	130	165	210
3/4	185	280	M18	170	240	290

 <p>1/2-13x1.75 HHCS Grade 5 Grade 8 (No. of Marks + 2)</p> <p>D T L X</p> <p>G = Grade (Bolt Strength) D = Nominal Diameter (Inches) T = Thread Count (Threads per Inch) L = Length (Inches) X = Description (Hex Head Cap Screw)</p>	 <p>M12-1.25x50 HHCS</p> <p>D T L X</p> <p>P = Property Class (Bolt Strength) D = Nominal Diameter (Millimeters) T = Thread Pitch (Thread Width, mm) L = Length (Millimeters) X = Description (Hex Head Cap Screw)</p>
---	--

For Technical Support/Warranty Information please call 310-762-9944



Installation Instructions: (Part # SB77783)

Product cleaning and maintenance instructions

Stainless Steel Finish – Aluminum polish may be used to polish small scratches and scuffs on the finish. Mild soap, window or glass cleaner may be used to clean the finish. **Dual state powder coat finish** – Mild soap, window or glass cleaner may be used to clean the finish. In order to protect the finish, you may wax your product on a regular basis with pure carnauba automotive wax. Do not use any types of soap, polish or wax that contains abrasive that could damage the finish. **Textured coated finishes** should be cleaned with a mild soap on a damp sponge. Do not apply polish or wax that requires to be removed by means of buffing. This type of wax is commonly used at car wash facilities. **Chrome Finish** – Mild soap, window or glass cleaner may be used to clean the finish. In order to protect the finish, you should wax your product on a regular basis with pure carnauba automotive wax. Do not use any types of soap, polish or wax that contains abrasive that could damage the finish.

Limited Warranties

Smittybilt's products are covered under the following limited warranties only. Note that the duration of the limited warranty differs according to the material and finish of the product purchased. Subject to the duration and conditions of the limited warranty stated below, Smittybilt warrants to the original retail purchaser that its products are free from defects in material and workmanship. All other warranties and representations express or implied, are hereby disclaimed, including fitness for merchantability and buyer's intended use or purpose. All parts are sold "AS IS" except for the limited warranties granted herein. Buyer assumes all risks as to the selection, suitability and performance of all goods and products selected. This limited warranty does not cover damage or impairment in any part due to misuse, improper installation, accident or contact with on-road or off-road hazards, product modification, improper or inadequate cleaning and/or maintenance. Smittybilt is not responsible for items damaged during shipping. This warranty is not transferable from the original buyer. For the original Buyer to be eligible for the limited warranty coverage, the Buyer must provide proof of purchase. Smittybilt strongly recommends returning the warranty registration card.

Customer's remedy hereunder shall be limited only to repair or replacement (at Smittybilt's option) of any defective part(s) returned to Smittybilt at customer's expense. The determination of whether or not a returned part is defective or subject to coverage under the limited warranties stated herein shall be made at Smittybilt's sole discretion.

To assure product quality, Smittybilt reserves the right to change product design, material, specification and finishes without prior notice to customers. This limited warranty gives you specific legal rights and you may also have other rights, which may vary from state to state. Some states do not allow limitations on how long an implied warranty lasts, so the above limitations may not apply as to you. Also, some states do not allow the exclusion or limitation of incidental or consequential damages, so the above limitations or exclusions may not apply to you. Smittybilt reserves the right to discontinue product lines and substitute products or provide other remedies than those listed in this limited warranty for those discontinued products.

Warning

Rollover and other types of vehicle accidents may result in serious injury or death to you, your passengers and others sharing the road. Smittybilt accessories are decorative and are not intended to reduce or avoid injury or damage in the event of an accident. The weight and location of Smittybilt accessories may affect your vehicles' handling, stability and performance, creating an increased risk of accident or rollover. Before installing any accessory, check state laws and assure that the accessory will not obscure any lights or interfere with proper operation on your vehicle's safety equipment. Consult your owner's manual and the Smittybilt instructions, or additional safety information. Smittybilt products, nor the warnings contained herein, are not a substitute for your safe driving. Don't drink and drive, always use seat belts and don't drive faster than conditions permit.

For Technical Support/Warranty Information please call 310-762-9944

Smittybilt, 400 W. Artesia, Compton, CA 90220