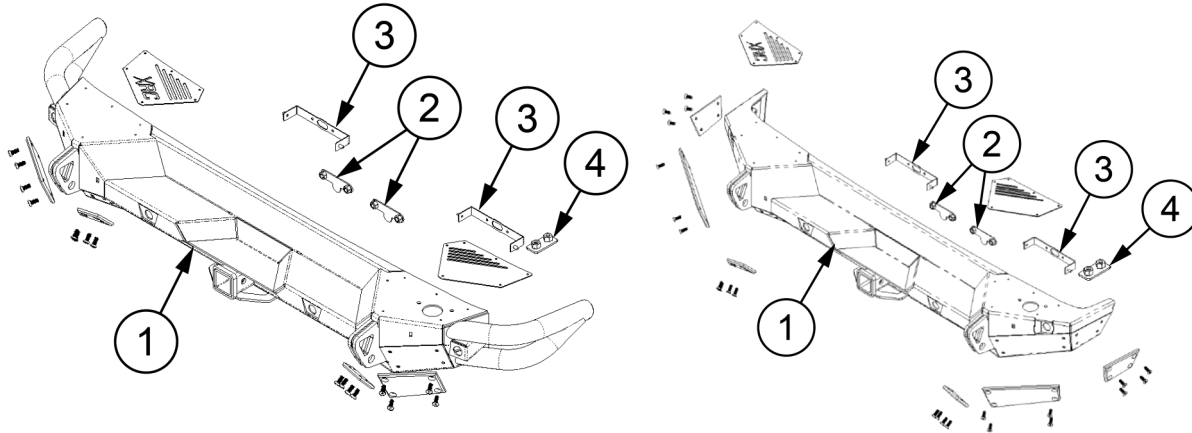




Installation Instructions:

SRC Bumper (Part # SB77714)
2018 Jeep JL 4 Door SRC Rear Bumper Kit
XRC Bumper (Part # SB77858)
2018 Jeep JL 4 Door XRC Rear Bumper Kit

CAUTION: This bumper is not rated for towing. It is "accessory" friendly only i.e. bike rack, hitch step, receiver rack.



SB77714 PARTS INCLUDED	Qty.	ID	SB77858 PARTS INCLUDED	Qty.	ID
93-401TU010 REAR SRC BUMPER	1	1	93-401TU002 REAR XRC BUMPER	1	1
93-315DV002 NUT PLATE	2	2	93-315DV002 NUT PLATE	2	2
84-401TU006 LIGHT BRACKET	2	3	84-401TU006 LIGHT BRACKET	2	3
84-401TU012 NUT PLATE, PASS	1	4	84-401TU012 NUT PLATE, PASS	1	4
90-77858-01 HARDWARE PACK: Cover Plates	1	-	90-77858-01 HARDWARE PACK: Cover Plates	1	-
6MM-1.0 12MM S.S BUTTON HEAD BOLT	12	-	6MM-1.0 12MM S.S BUTTON HEAD BOLT	12	-
90-77858-02 HARDWARE PACK: Crossmember	1	-	90-77858-02 HARDWARE PACK: Crossmember	1	-
12mm X 100mm HEX BOLT Gr. 10.9	4	-	12mm X 100mm HEX BOLT Gr. 10.9	4	-
12mm FLAT WASHER Gr. 10.9	4	-	12mm FLAT WASHER Gr. 10.9	4	-
90-77858-03 HARDWARE PACK: Sensor plugs	1	-	90-77858-03 HARDWARE PACK: Sensor plugs	1	-
PLASTIC PLUG	4	-	PLASTIC PLUG	4	-
90-77858-04 HARDWARE PACK: Light Mount	1	-	90-77858-04 HARDWARE PACK: Light Mount	1	-
6mm-1.0 BLACK NYLOCK NUT Gr. 10.9	4	-	6mm-1.0 BLACK NYLOCK NUT Gr. 10.9	4	-
6mm BLACK FLAT WASHER	4	-	6mm BLACK FLAT WASHER	4	-
SB7734 LICENSE PLATE RELOCATION BRACKET	1	-	SB7734 LICENSE PLATE RELOCATION BRACKET	1	-
612800-04 LIGHT BAR KIT	1	-	612800-04 LIGHT BAR KIT	1	-
90-77858-05 HARDWARE PACK: Trailer Plug	1	-	90-77858-05 HARDWARE PACK: Trailer Plug	1	-
1" SPACER	1	-	1" SPACER	1	-
M10 X 45 mm HEX BOLT Gr. 10.9	2	-	M10 X 45 mm HEX BOLT Gr. 10.9	2	-
M10 FLT WASHER	2	-	M10 FLT WASHER	2	-
90-77858-06 HARDWARE PACK: Lower Mount	1	-	90-77858-06 HARDWARE PACK: Lower Mount	1	-
M14 X 40 mm HEX BOLT Gr. 10.9	2	-	M14 X 40 mm HEX BOLT Gr. 10.9	2	-
M14 FLT WASHER	2	-	M14 FLT WASHER	2	-

For Technical Support/Warranty Information please call 310-762-9944



Installation Instructions:

SRC Bumper (Part # SB77714)

2018 Jeep JL 4 Door SRC Rear Bumper Kit

XRC Bumper (Part # SB77858)

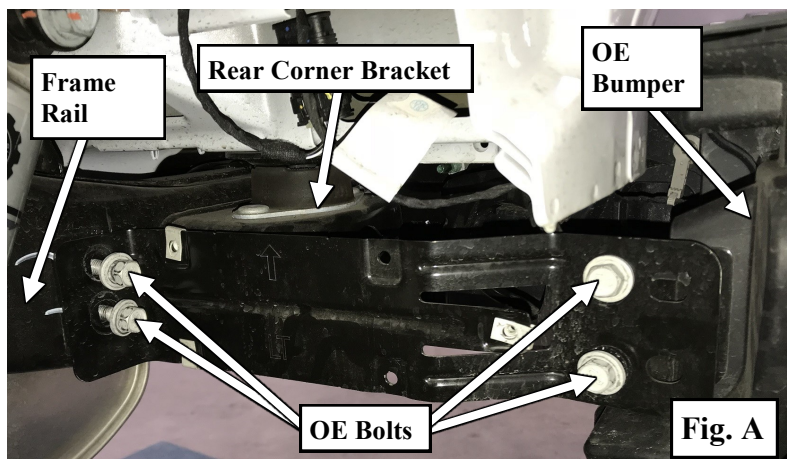
2018 Jeep JL 4 Door XRC Rear Bumper Kit

INSTALLATION:

NOTE : *These instructions were performed on a Rubicon model equipped with metal bumpers, Sport and Sahara models with plastic bumpers may differ slightly. If your Jeep has plastic bumpers with sensors, you will need to purchase OE Rubicon backup sensor sockets and retainers from your local dealership, as they are not removable.*

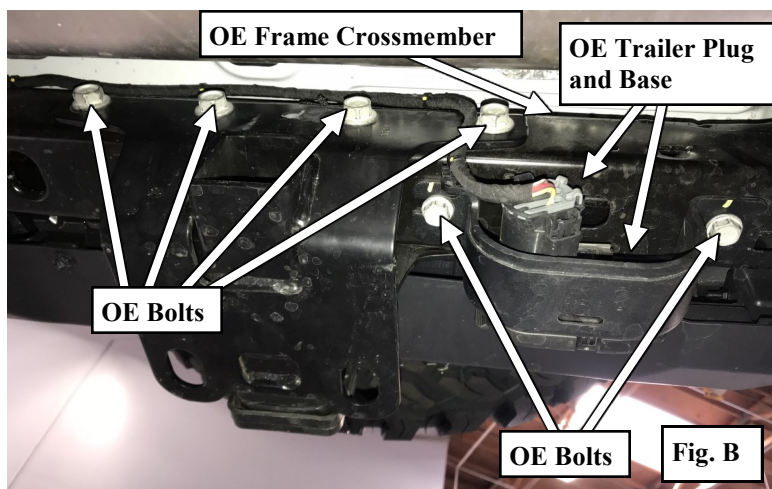
Step 1 : Park the vehicle on a flat level surface. Apply the parking brake and chock all 4 wheels.

Step 2 : Remove the (4 per side) OE bolts securing the driver and passenger side rear corner brackets to the frame rails (**Fig. A**).



NOTE : *Configuration will vary per model and options package.*

Step 3 : Using an 18mm wrench, remove the (4) OE bolts securing the OE rear bumper to the OE frame crossmember (**Fig. B**).



For Technical Support/Warranty Information please call 310-762-9944



Installation Instructions:

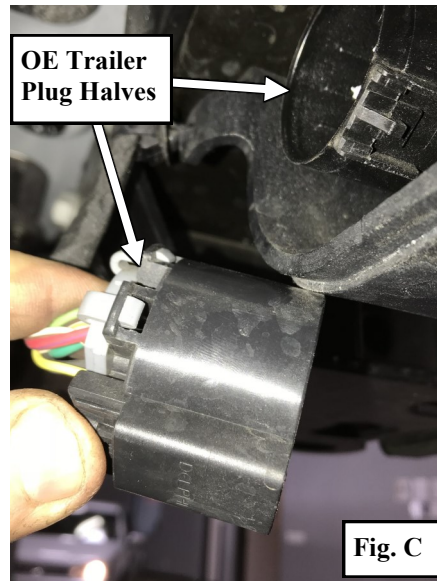
SRC Bumper (Part # SB77714)

2018 Jeep JL 4 Door SRC Rear Bumper Kit

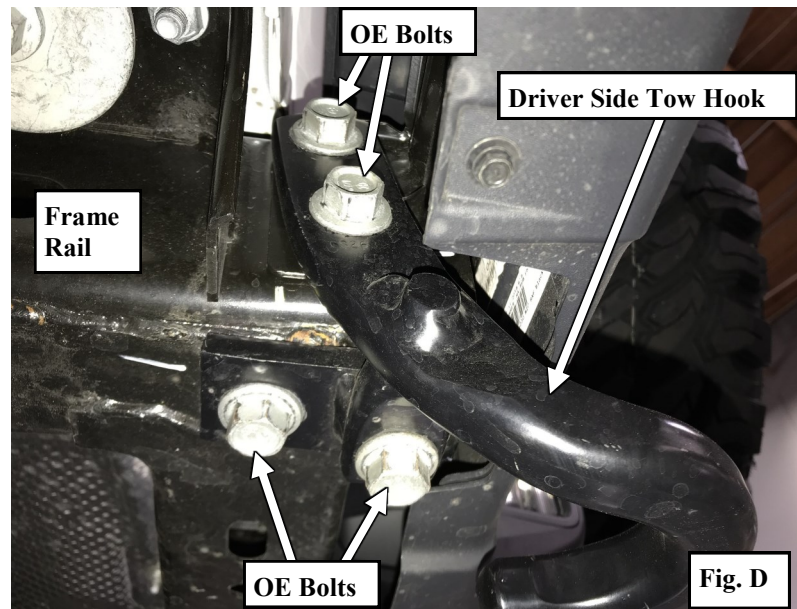
XRC Bumper (Part # SB77858)

2018 Jeep JL 4 Door XRC Rear Bumper Kit

Step 4 : If equipped, disconnect the trailer plug and unbolt the base from the frame (**Fig. C**).



Step 5 : On the driver side, remove the (4) OE bolts and remove the tow hook from the frame. On the passenger side, remove the (2) OE bolts securing the OE front bumper to the side of the frame rail (**Fig. D**).



For Technical Support/Warranty Information please call 310-762-9944



Installation Instructions:

SRC Bumper (Part # SB77714)

2018 Jeep JL 4 Door SRC Rear Bumper Kit

XRC Bumper (Part # SB77858)

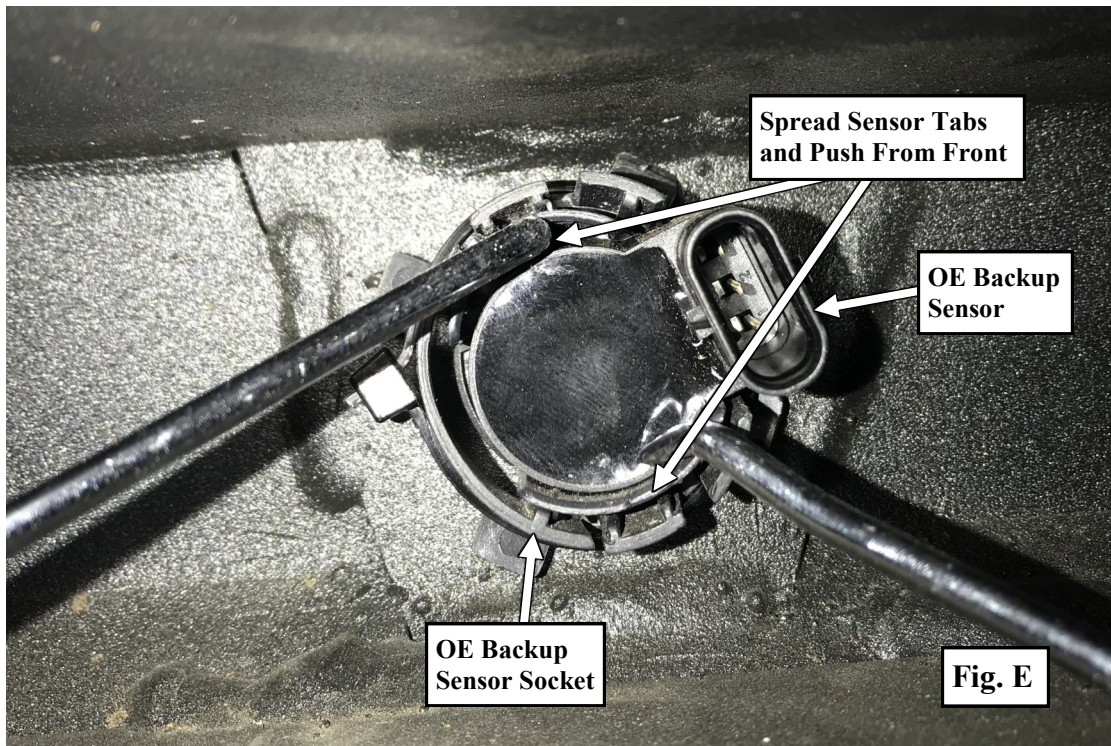
2018 Jeep JL 4 Door XRC Rear Bumper Kit

Step 6 : Under the driver side rear quarter panel, disconnect the backup sensor wiring harness connectors.

Step 7 : Carefully remove the **OE** rear bumper from the vehicle. Save the **OE** hardware for reinstallation.

Step 8 : Unplug the **OE** wiring harness from the **OE** backup sensors and remove the **OE** backup sensors by spreading the back of the sockets, where clipped over the sensor tabs, while pushing the sensors out from the front (**Fig E**).

NOTE : *Be sure the OE backup sensor O-rings are not lost during removal.*



Step 9 : **Metal Rubicon Bumper Only:** Disengage the locking tabs securing the outer retaining ring to the socket. Carefully push the sockets out from the backside and remove from the **OE** rear bumper.

NOTE : *Be sure to note the orientation of the back-up sensor retainers in the OE bumper prior to removal for reinstallation.*

For Technical Support/Warranty Information please call 310-762-9944



Installation Instructions:

SRC Bumper (Part # SB77714)

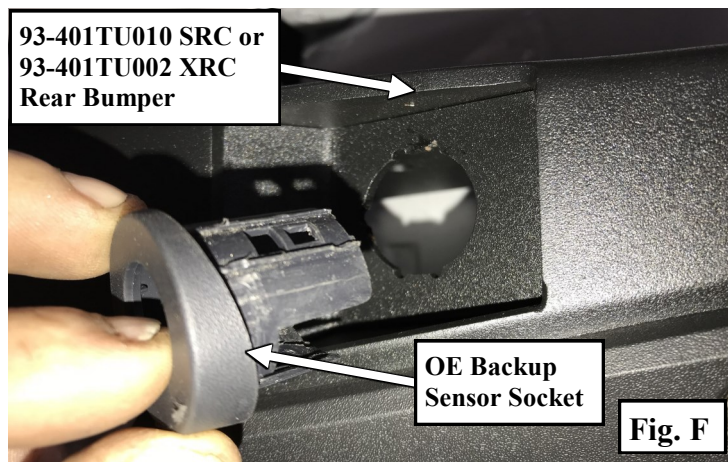
2018 Jeep JL 4 Door SRC Rear Bumper Kit

XRC Bumper (Part # SB77858)

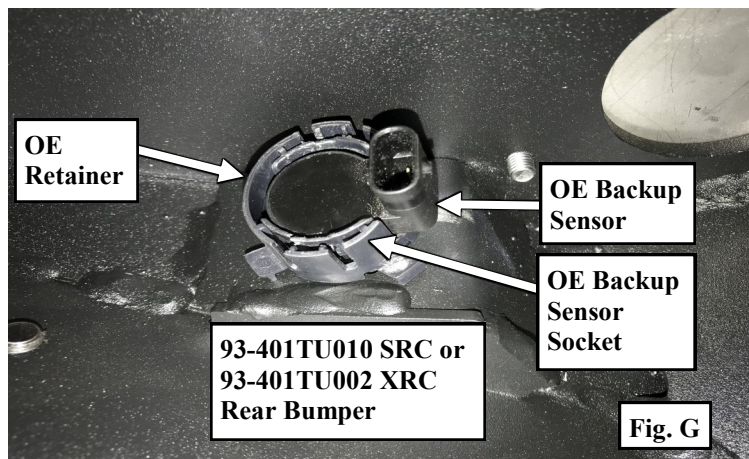
2018 Jeep JL 4 Door XRC Rear Bumper Kit

Step 10: Install the OE back-up sensor sockets into the mounting holes on the rear bumper (93-401TU010 SRC or 93-401TU002 XRC) according to their original orientation in the OE bumper (Fig. F).

NOTE : For vehicles without back-up sensors, install block off plugs into the SRC/XRC bumper instead.



Step 11: Install the previously removed OE back-up sensors into the OE backup sensor sockets, using the OE retainers, according to their original orientation in the OE bumper (Fig. G).



For Technical Support/Warranty Information please call 310-762-9944



Installation Instructions:

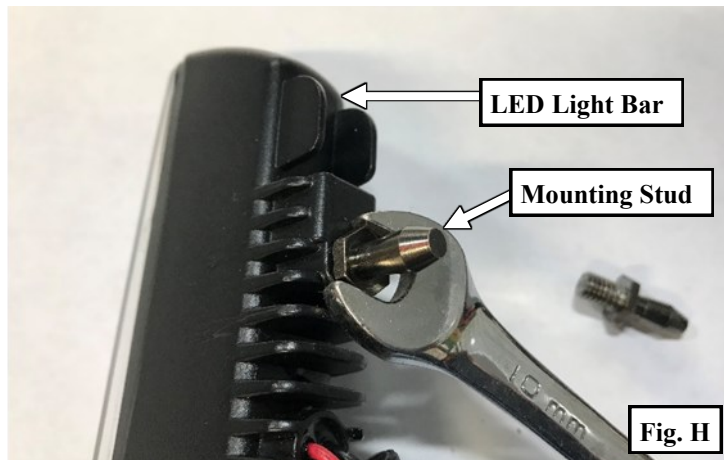
SRC Bumper (Part # SB77714)

2018 Jeep JL 4 Door SRC Rear Bumper Kit

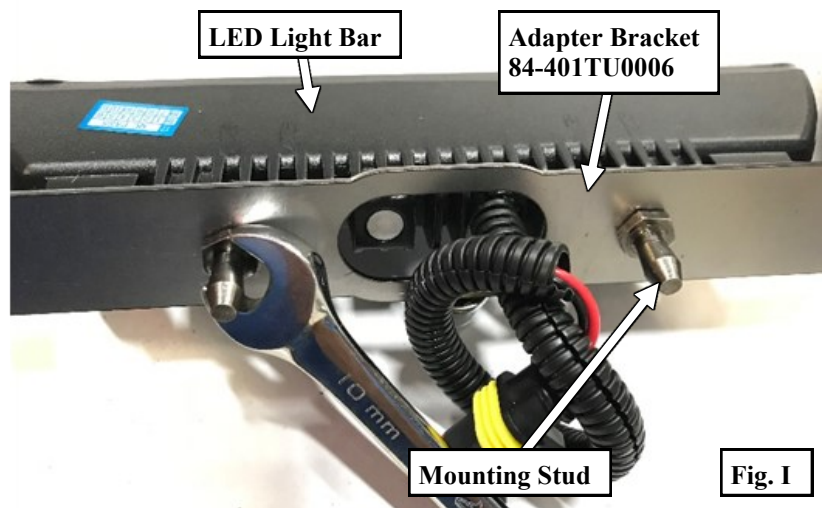
XRC Bumper (Part # SB77858)

2018 Jeep JL 4 Door XRC Rear Bumper Kit

Step 12: Install the (2) 6" LED light bars from lighting kit (612800-4 included with the bumper). Using an open end 10mm wrench (A box end wrench or socket won't have enough bite), remove the (2 Per Light) mounting studs (Fig. H).



Step 13: Install the adapter brackets (84-401TU006) to the (2) 6" LED light bars and reinstall the previously removed mounting studs. Torque the mounting studs to 6 ft-lbs (Fig. I).



For Technical Support/Warranty Information please call 310-762-9944



Installation Instructions:

SRC Bumper (Part # SB77714)

2018 Jeep JL 4 Door SRC Rear Bumper Kit

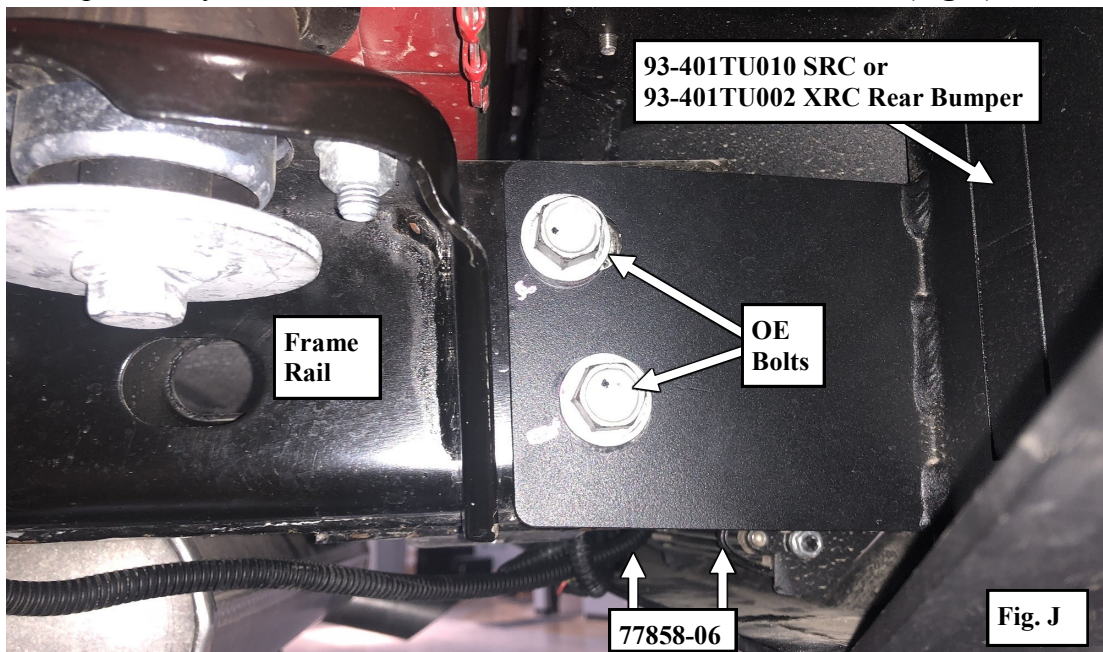
XRC Bumper (Part # SB77858)

2018 Jeep JL 4 Door XRC Rear Bumper Kit

Step 14: Install the (2) 6" LED light bars assemblies to the rear bumper (93-401TU010 SRC or 93-401TU002 XRC) using the (2 Per Side) supplied 6mm nuts and washers. Be sure the light bar wiring is pointing toward the center of the bumper.

Step 15: Insert the nut plate (401TU012) in the rear passenger side of the frame. Once the bumper is installed, use hardware pack 77858-06 to bolt to the nut plate. Reuse OE tow hook hardware on DVR side.

Step 16: *NOTE: This step might require 2 people.* Carefully raise the rear bumper (93-401TU010 SRC or 93-401TU002 XRC) against the outer frame rails and align the mounting holes. Secure the rear bumper to the outer frame rails using the previously removed OE bolts. Leave the bolts loose at this time (**Fig. J**).



For Technical Support/Warranty Information please call 310-762-9944



Installation Instructions:

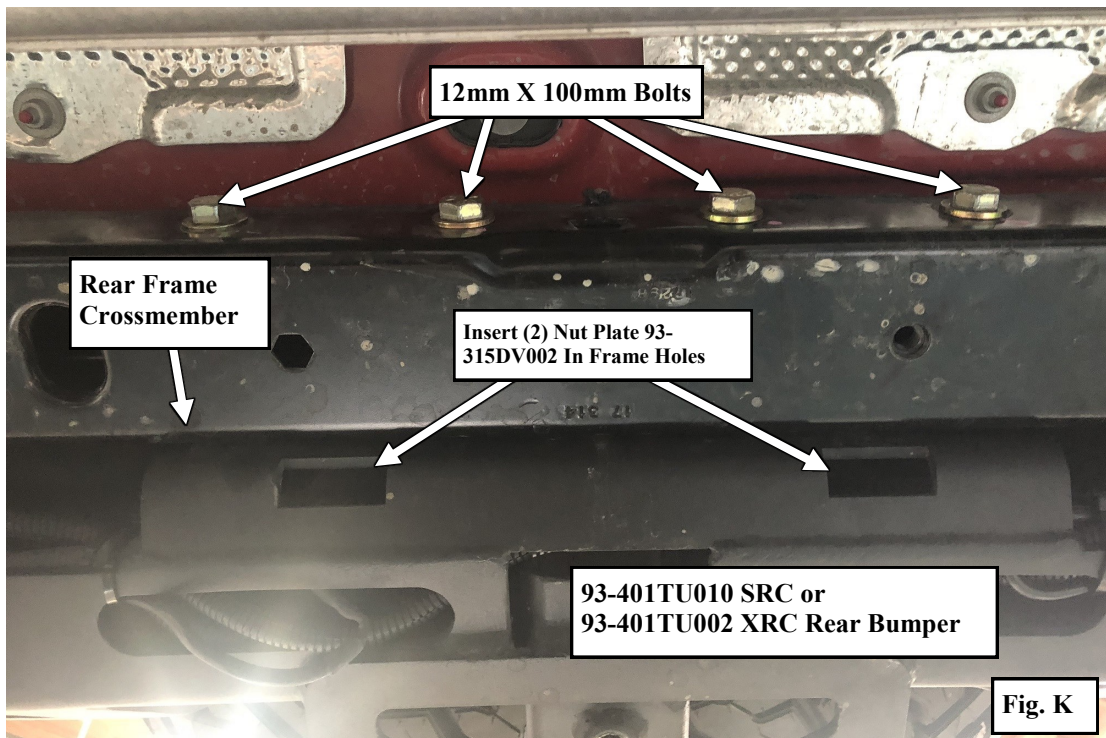
SRC Bumper (Part # SB77714)

2018 Jeep JL 4 Door SRC Rear Bumper Kit

XRC Bumper (Part # SB77858)

2018 Jeep JL 4 Door XRC Rear Bumper Kit

Step 17: Insert the (2) nut plates (90-315DV002) into the center (2) holes in the rear bumper (93-313AR001 SRC or 93-315DV001 XRC) (Fig. K).



Step 18: Secure the rear bumper (93-401TU010 SRC or 93-401TU002 XRC) to the rear frame crossmember using the (4) supplied 12mm X 100mm bolts, washers and previously installed (2) nut plates (90-315DV002). Level the rear bumper and torque the 12mm bolts to 80 ft-lbs (Fig. K).

Step 19: Torque all the OE bumper mounting hardware to manufacturer's specifications.

For Technical Support/Warranty Information please call 310-762-9944



Installation Instructions:

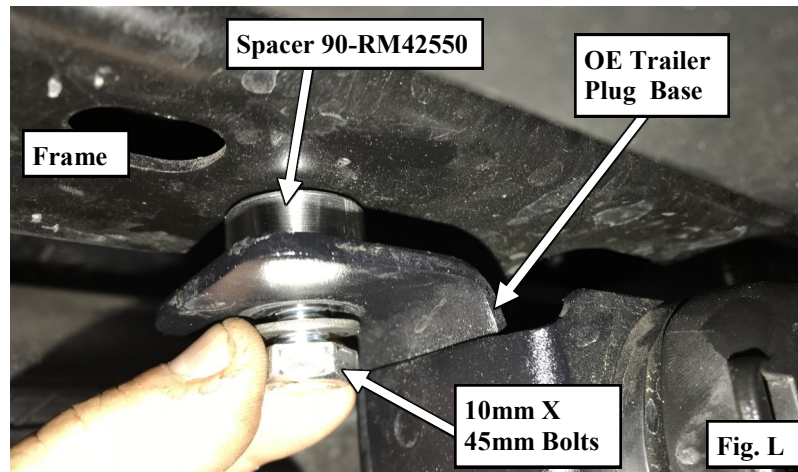
SRC Bumper (Part # SB77714)

2018 Jeep JL 4 Door SRC Rear Bumper Kit

XRC Bumper (Part # SB77858)

2018 Jeep JL 4 Door XRC Rear Bumper Kit

Step 20: If applicable, reinstall the trailer plug base to the frame using the (2) provided **10mm X 45mm bolts** and spacers (**90-RM42550**) and reconnect the trailer plug. Torque the **10mm bolts** to **40 ft-lbs (Figs. C and L)**.



Step 21: If you are planning on wiring the LED lights to a dash switch; use the hardware and instructions provided with the LED light kits. Test, aim & adjust the LED lights at this time.

IMPORTANT!: *If planning on wiring LED lights into the OE reverse light circuit; it is recommended this task is performed by qualified automotive electrician.*

Step 22: Install license plate relocation bracket (**SB7734**) according to the instructions included with kit.

Step 23: Recheck all hardware for proper torque at this time. Torque all hardware according to manufacturer's specifications or chart on page 11.

For Technical Support/Warranty Information please call 310-762-9944



Installation Instructions:

SRC Bumper (Part # SB77714)

2018 Jeep JL 4 Door SRC Rear Bumper Kit

XRC Bumper (Part # SB77858)

2018 Jeep JL 4 Door XRC Rear Bumper Kit

Step 24: Installation is now complete (**Fig. M**).



For Technical Support/Warranty Information please call 310-762-9944

Smittybilt, 400 W. Artesia, Compton, CA 90220



Installation Instructions:

SRC Bumper (Part # SB77714)

2018 Jeep JL 4 Door SRC Rear Bumper Kit

XRC Bumper (Part # SB77858)

2018 Jeep JL 4 Door XRC Rear Bumper Kit

Use this only as a guide for hardware without a called out torque specification in the instruction manual.

Bolt Torque and ID						
Decimal System			Metric System			
All Torques in Ft. Lbs. Maximums						
Bolt Size	Grade 5	Grade 8	Bolt Size	Class 9.8	Class 10.9	Class 12.9
5/16	15	20	M6	5	9	12
3/8	30	45	M8	18	23	27
7/16	45	60	M10	32	45	50
1/2	65	90	M12	55	75	90
9/16	95	130	M14	85	120	145
5/8	135	175	M16	130	165	210
3/4	185	280	M18	170	240	290

<p>1/2-13x1.75 HHCS</p> <p>Grade 5 Grade 8</p> <p>(No. of Marks + 2)</p> <p>D T L X</p>	<p>M12-1.25x50 HHCS</p> <p>D T L X</p>
<p>G = Grade (Bolt Strength)</p> <p>D = Nominal Diameter (Inches)</p> <p>T = Thread Count (Threads per Inch)</p> <p>L = Length (Inches)</p> <p>X = Description (Hex Head Cap Screw)</p>	<p>P = Property Class (Bolt Strength)</p> <p>D = Nominal Diameter (Millimeters)</p> <p>T = Thread Pitch (Thread Width, mm)</p> <p>L = Length (Millimeters)</p> <p>X = Description (Hex Head Cap Screw)</p>

For Technical Support/Warranty Information please call 310-762-9944



Installation Instructions:

SRC Bumper (Part # SB77714)

2018 Jeep JL 4 Door SRC Rear Bumper Kit

XRC Bumper (Part # SB77858)

2018 Jeep JL 4 Door XRC Rear Bumper Kit

Product cleaning and maintenance instructions

Stainless Steel Finish – Aluminum polish may be used to polish small scratches and scuffs on the finish. Mild soap, window or glass cleaner may be used to clean the finish. **Dual state powder coat finish** – Mild soap, window or glass cleaner may be used to clean the finish. In order to protect the finish, you may wax your product on a regular basis with pure carnauba automotive wax. Do not use any types of soap, polish or wax that contains abrasive that could damage the finish. **Textured coated finishes** should be cleaned with a mild soap on a damp sponge. Do not apply polish or wax that requires to be removed by means of buffing. This type of wax is commonly used at car wash facilities. **Chrome Finish** – Mild soap, window or glass cleaner may be used to clean the finish. In order to protect the finish, you should wax your product on a regular basis with pure carnauba automotive wax. Do not use any types of soap, polish or wax that contains abrasive that could damage the finish.

Limited Warranties

Smittybilt's products are covered under the following limited warranties only. Note that the duration of the limited warranty differs according to the material and finish of the product purchased. Subject to the duration and conditions of the limited warranty stated below, Smittybilt warrants to the original retail purchaser that its products are free from defects in material and workmanship. All other warranties and representations express or implied, are hereby disclaimed, including fitness for merchantability and buyer's intended use or purpose. All parts are sold "AS IS" except for the limited warranties granted herein. Buyer assumes all risks as to the selection, suitability and performance of all goods and products selected. This limited warranty does not cover damage or impairment in any part due to misuse, improper installation, accident or contact with on-road or off-road hazards, product modification, improper or inadequate cleaning and/or maintenance. Smittybilt is not responsible for items damaged during shipping. This warranty is not transferable from the original buyer. For the original Buyer to be eligible for the limited warranty coverage, the Buyer must provide proof of purchase. Smittybilt strongly recommends returning the warranty registration card.

Customer's remedy hereunder shall be limited only to repair or replacement (at Smittybilt's option) of any defective part(s) returned to Smittybilt at customer's expense. The determination of whether or not a returned part is defective or subject to coverage under the limited warranties stated herein shall be made at Smittybilt's sole discretion.

To assure product quality, Smittybilt reserves the right to change product design, material, specification and finishes without prior notice to customers. This limited warranty gives you specific legal rights and you may also have other rights, which may vary from state to state. Some states do not allow limitations on how long an implied warranty lasts, so the above limitations may not apply as to you. Also, some states do not allow the exclusion or limitation of incidental or consequential damages, so the above limitations or exclusions may not apply to you. Smittybilt reserves the right to discontinue product lines and substitute products or provide other remedies than those listed in this limited warranty for those discontinued products.

Warning

Rollover and other types of vehicle accidents may result in serious injury or death to you, your passengers and others sharing the road. Smittybilt accessories are decorative and are not intended to reduce or avoid injury or damage in the event of an accident. The weight and location of Smittybilt accessories may affect your vehicles' handling, stability and performance, creating an increased risk of accident or rollover. Before installing any accessory, check state laws and assure that the accessory will not obscure any lights or interfere with proper operation on your vehicle's safety equipment. Consult your owner's manual and the Smittybilt instructions, or additional safety information. Smittybilt products, nor the warnings contained herein, are not a substitute for your safe driving. Don't drink and drive, always use seat belts and don't drive faster than conditions permit.

For Technical Support/Warranty Information please call 310-762-9944

Smittybilt, 400 W. Artesia, Compton, CA 90220