

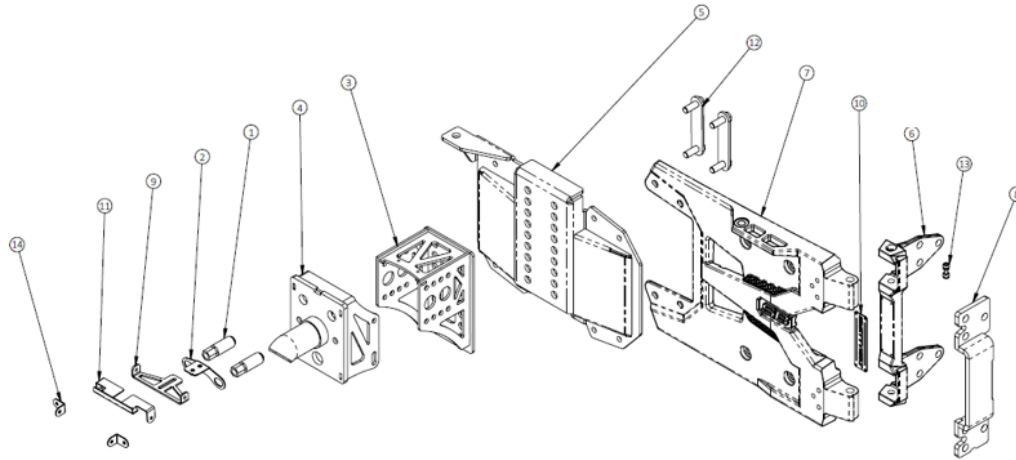


# Installation Instructions:

(Part # SB7743)  
JL HD PIVOT

**NOTE: Carefully read entire instructions thoroughly before attempting to install this part.**

**NOTE: Park the vehicle on a flat, level surface and engage the parking brake.**



Parts Included SB7743	Qty	ID
31-401TU007 14MM WHEEL LUG	2	1
84-401TU008 LICENSE PLATE BRACKET A	1	2
84-401TU033 WHEEL MOUNT, STATIONARY BRACKET	1	3
84-401TU034 WHEEL MOUNT, ADJUSTABLE BRACKET	1	4
84-401TU052 TIRE CARRIER MOUNT	1	5
84-401TU053 CAST HD PIVOT HINGE DUCTILE IRON	1	6
84-401TU054 CAST HD REINFORCEMENT PLATE CAST ALUMINUM	1	7
84-401TU055 REINFORCEMENT BRACKET	1	8
84-401TU056 BRAKE LIGHT BRACKET B .125 STEEL	1	9
97-401TU059 LOGO PLATE .075 SST	1	10
84-401TU074 BRAKE LIGHT BRACKET .075 STEEL	1	11
84-401TU078 BOLT PLATE	2	12
90-401TU058 LIMIT ARM BUMPER	1	13
84-401TU075 LIGHT MOUNT CLIP .075 STEEL	2	14
90-7743-01 HARDWARE PACK	1	
M10(1.5) X 55MM HEX SOC CAP SC GR 10.9 ZINC	4	
M10 FL WSHR DIN 125 ZINC	4	
90-7743-02 HARDWARE PACK	1	
M8(1.25) X 35MM HEX SOC CAP SC GR 10.9 BLACK ZINC	8	
M8 FL WSHR DIN 125 ZINC	8	
90-7743-03 HARDWARE PACK	1	
M10(1.25) X 30MM HEX SOC CAP SC GR 10.9 BLACK ZINC	4	

Parts Included SB7743	Qty	ID
M10 FL WSHR DIN 125 ZINC	8	
M10 NYLOCK NUT GR 10.9 ZINC	4	
M12 FL WSHR DIN 125 ZINC	4	
M12 NYLOCK NUT GR 10.9 ZINC	4	
M6(1.0) X 20MM HEX SOC CNTRSUNK SC GR 10.9 BLACK ZINC	2	
90-7743-04 HARDWARE PACK	1	
M6(1.0) X 14MM BUTTON SOC CAP SC ALLOY BLACK ZINC	2	
M6(1.0) X 18MM BUTTON SOC CAP SC ALLOY BLACK ZINC	2	
M6 FL WSHR DIN 125 ZINC	6	
M6(1.0) NYLOCK NUT GR 10.9 BLACK ZINC	2	
M14(1.5) X 16MM HEX SOC CAP SC ALLOY BLACK ZINC	2	
M14 FL WSHR DIN 125 ZINC	2	
90-7743-05 HARDWARE PACK	1	
M12 X 75MM SHOULDER SCREW, M10(1.5) THREAD, SSTL	2	
M12 OILITE BRASS BUSHING	4	
M4(0.7) X 15MM SET SCREW, GR 10.9	2	
90-7743-06 HARDWARE PACK	1	
M8(1.25) SPINNING WASHER NUT GR 10.9 ZINC	6	
90-7743-07 HARDWARE PACK	1	
M4(.7) X 12MM BHCS SSTL	4	
90-60714 HARDWARE PACK	1	
1/2" (12MM) PUSH IN HOLE PLUG	2	

For Technical Support/Warranty Information please call 310-762-9944

Smittybilt, 400 W Artesia, Compton, CA 90220

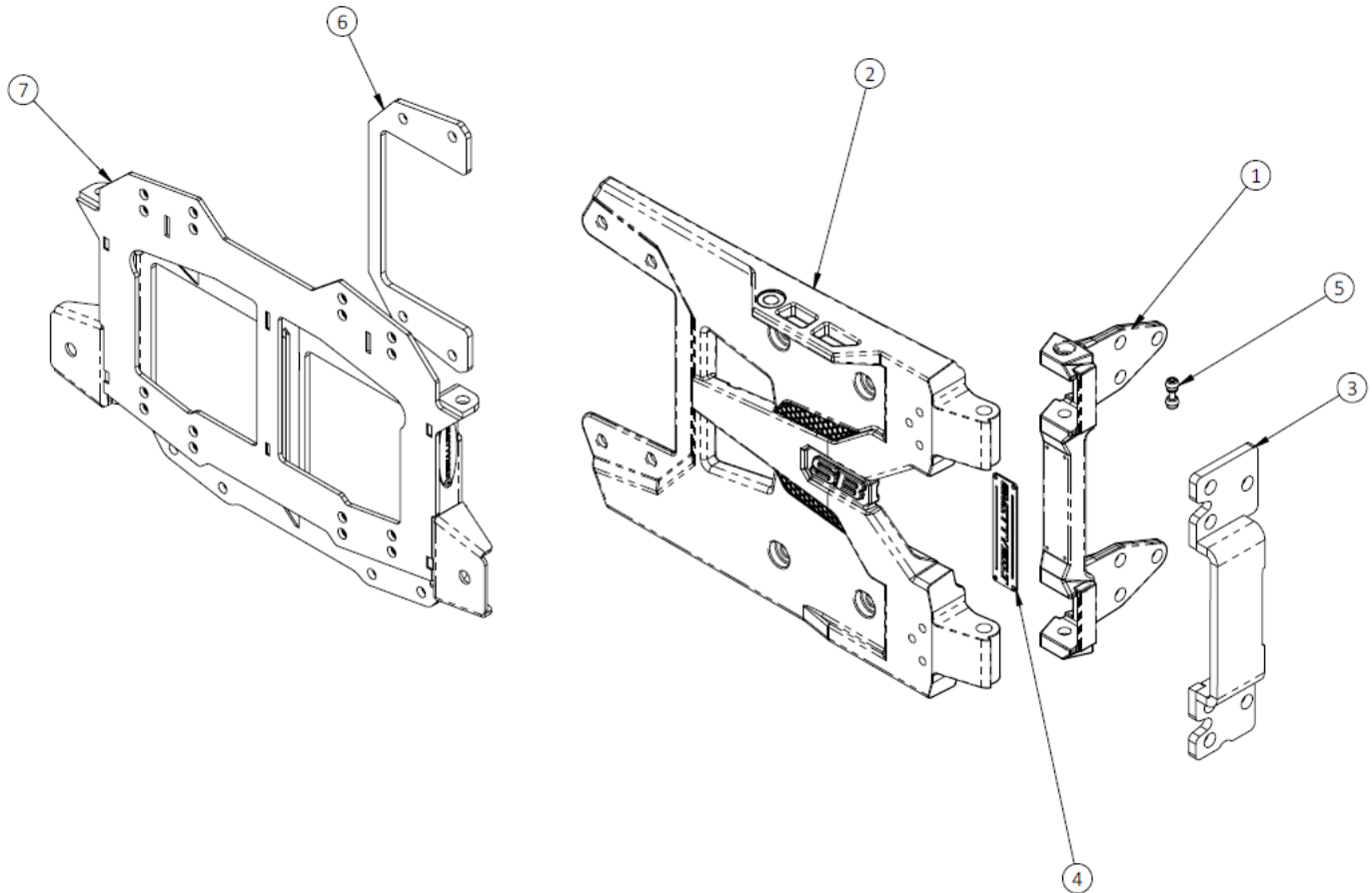


# Installation Instructions:

(Part # SB7745)  
JL HD PIVOT

**NOTE: Carefully read entire instructions thoroughly before attempting to install this part.**

**NOTE: Park the vehicle on a flat, level surface and engage the parking brake.**



Parts Included SB7745	Qty	ID
84-401TU053 CAST HD PIVOT HINGE	1	1
84-401TU054 CAST HD REINFORCEMENT PLATE	1	2
84-401TU055 REINFORCEMENT BRACKET	1	3
97-401TU059 LOGO PLATE	1	4
90-401TU058 LIMIT ARM BUMPER	1	5
84-40TU013 RELOCATION SPACER	1	6
SB7721 SPARE TIRE RELOCATION BRACKET	1	7
90-7743-01 HARDWARE PACK	1	
M10(1.5) X 55MM HEX SOC CAP SC GR 10.9 ZINC	4	

Parts Included SB7745	Qty	ID
M10 FL WSHR DIN 125 ZINC	4	
90-7743-05 HARDWARE PACK	1	
M12 X 75MM SHOULDER SCREW, M10 (1.5) THREAD, SSTL	2	
M12 OILITE BRASS BUSHING	4	
M4(.7) X 15MM SET SCREW, GR 10.9	2	
90-7743-06 HARDWARE PACK	1	
M8(1.25) SPINNING WASHER NUT GR 10.9 ZINC	6	
90-7743-07 HARDWARE PACK	1	
M4(.7) X 12MM BHCS SSTL	4	

For Technical Support/Warranty Information please call 310-762-9944

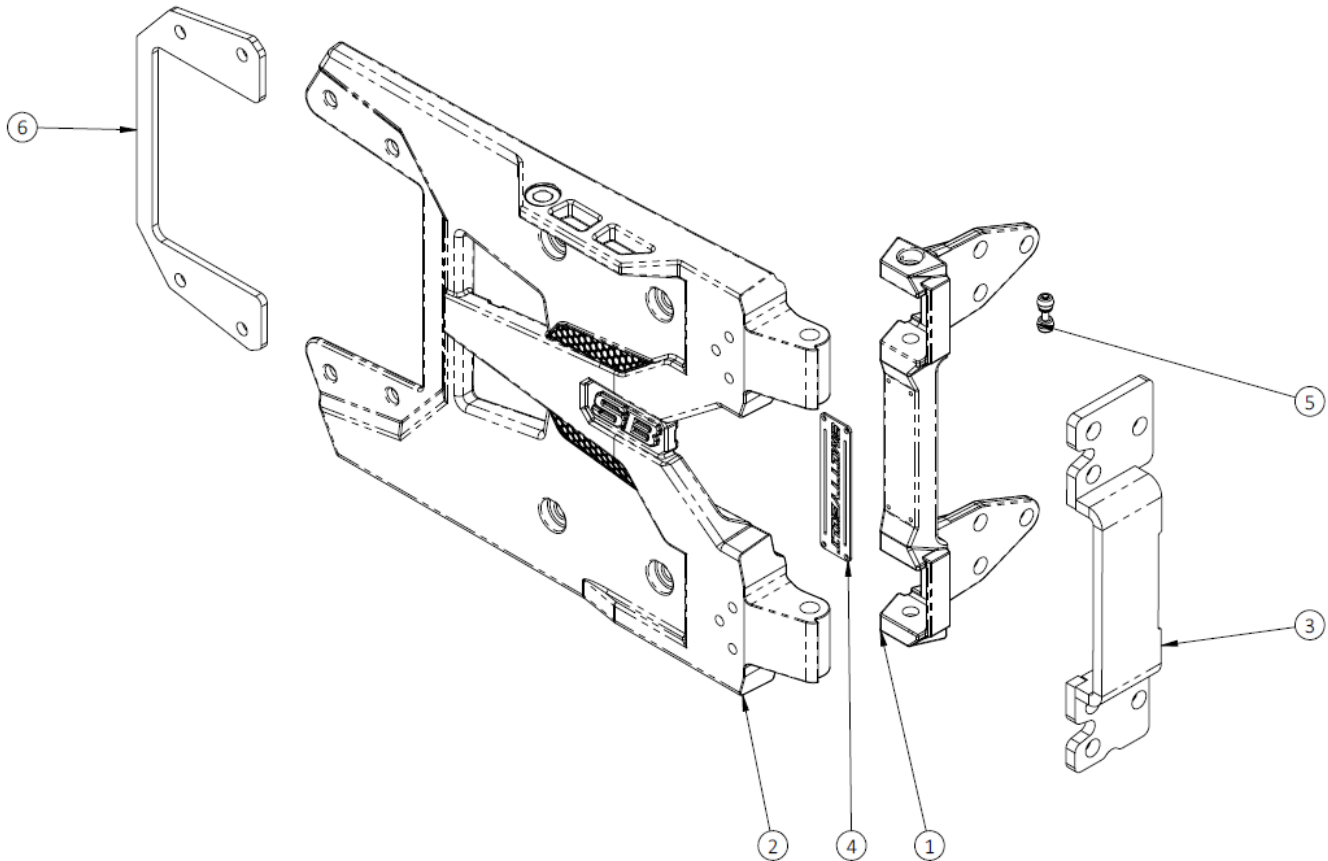


# Installation Instructions:

(Part # SB7746)  
JL HD PIVOT

**NOTE: Carefully read entire instructions thoroughly before attempting to install this part.**

**NOTE: Park the vehicle on a flat, level surface and engage the parking brake.**



Parts Included SB7746	Qty	ID
84-401TU053 CAST HD PIVOT HINGE	1	1
84-401TU054 CAST HD REINFORCEMENT PLATE	1	2
84-401TU055 REINFORCEMENT BRACKET	1	3
97-401TU059 LOGO PLATE	1	4
90-401TU058 LIMIT ARM BUMPER	1	5
84-40TU013 RELOCATION SPACER	1	6
90-7743-01 HARDWARE PACK	1	
M10(1.5) X 55MM HEX SOC CAP SC GR 10.9 ZINC	4	
M10 FL WSHR DIN 125 ZINC	4	

Parts Included SB7746	Qty	ID
90-7743-05 HARDWARE PACK	1	
M12 X 75MM SHOULDER SCREW, M10(1.5) THREAD, SSSL	2	
M12 OILITE BRASS BUSHING	4	
M4(.7) X 15MM SET SCREW, GR 10.9	2	
90-7743-06 HARDWARE PACK	1	
M8(1.25) SPINNING WASHER NUT GR 10.9 ZINC	6	
90-7743-07 HARDWARE PACK	1	
M4(0.7) X 12MM BHCS SSSL	4	
90-60714 HARDWARE PACK	1	
1/2" (12MM) PUSH IN HOLE PLUG	2	

For Technical Support/Warranty Information please call 310-762-9944



## Installation Instructions: (Part # SB7743, SB7745, SB7746) JL HD PIVOT

### INSTALLATION:

- Step 1:** Remove the spare tire from OE tire carrier. Consult your owner's manual if necessary.
- Step 2:** Open tailgate. Use a plastic pry bar to carefully remove the rear interior panel (**Fig. A & B**). Start from the latch side and set aside once removed. Once the panel is removed, carefully disconnect the brake light (black connector in middle). Pull the red locking tab outwards. Squeeze the retaining tab while pulling the connector apart. The camera wiring harness (white connector on top) does not have a locking tab and is disconnected the same way. **Do not pull directly on wiring (Fig. C).**

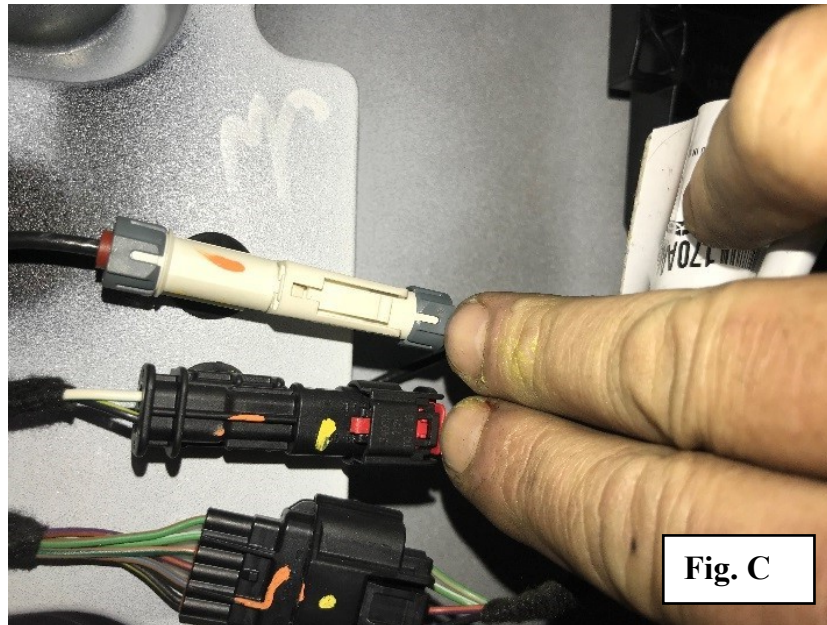


For Technical Support/Warranty Information please call 310-762-9944





## Installation Instructions: (Part # SB7743, SB7745, SB7746) JL HD PIVOT



**Step 3:** From the outside of the tailgate, gently remove the wiring grommet. Feed the disconnected wiring harness through the hole on the tailgate (**Fig. D**).

**WARNING:** *Remove wiring harness completely from the OE tailgate, through the exterior hole. Failure to do so may result in damage to the wiring harness.*



For Technical Support/Warranty Information please call 310-762-9944

Smittybilt, 400 W Artesia, Compton, CA 90220

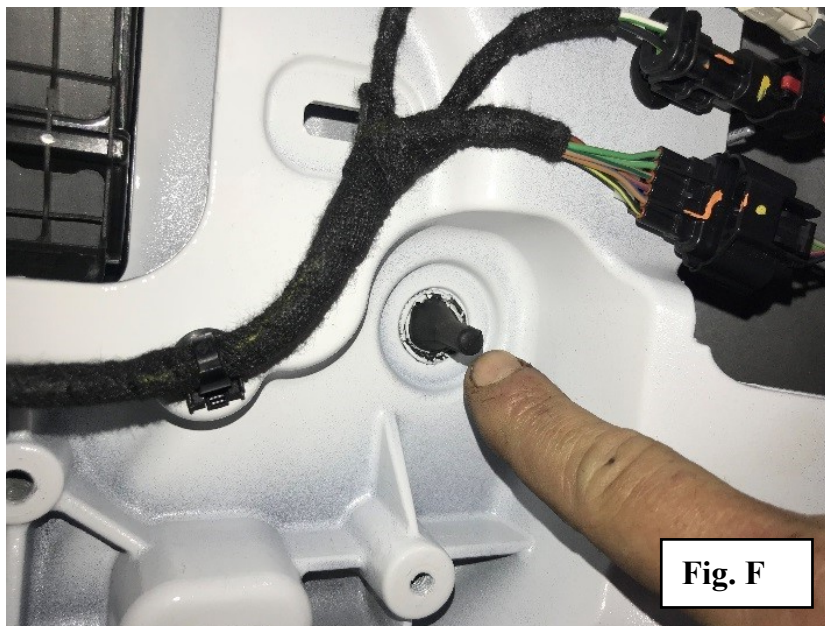


## Installation Instructions: (Part # SB7743, SB7745, SB7746) JL HD PIVOT

**Step 4:** Use a 13mm socket to remove the eight (8) OE M8 bolts holding the tire carrier to the tailgate (**Fig. E**).



**Step 5:** Remove the two (2) rubber anti-rattle bumpers from the tailgate by pulling the nipple on the inside of the tailgate (**Fig. F**) whilst pulling and twisting harder on the outside (**Fig. G**).



For Technical Support/Warranty Information please call 310-762-9944

Smittybilt, 400 W Artesia, Compton, CA 90220





**Installation Instructions:**  
(Part # SB7743, SB7745, SB7746)  
JL HD PIVOT



**Step 6:** Insert the two (2) push in plugs **Hardware Pack (60714)** into the two anti-rattle holes **(Fig. H)**. The plug will snap into place with the outer edge flush to the door when properly installed.



For Technical Support/Warranty Information please call 310-762-9944



## Installation Instructions: (Part # SB7743, SB7745, SB7746) JL HD PIVOT

**Step 7:** Use a T40 torx tool to remove the three (3) screws from lower trim piece (**Fig. I**).



**Step 8:** Remove passenger rear quarter panel by removing the screw from the forward part of the plastic (**Fig. J**). Pry the seatbelt escutcheon (**Fig. K**). If applicable unplug the wire harness (**Fig. L**). Then remove corner panel.



For Technical Support/Warranty Information please call 310-762-9944

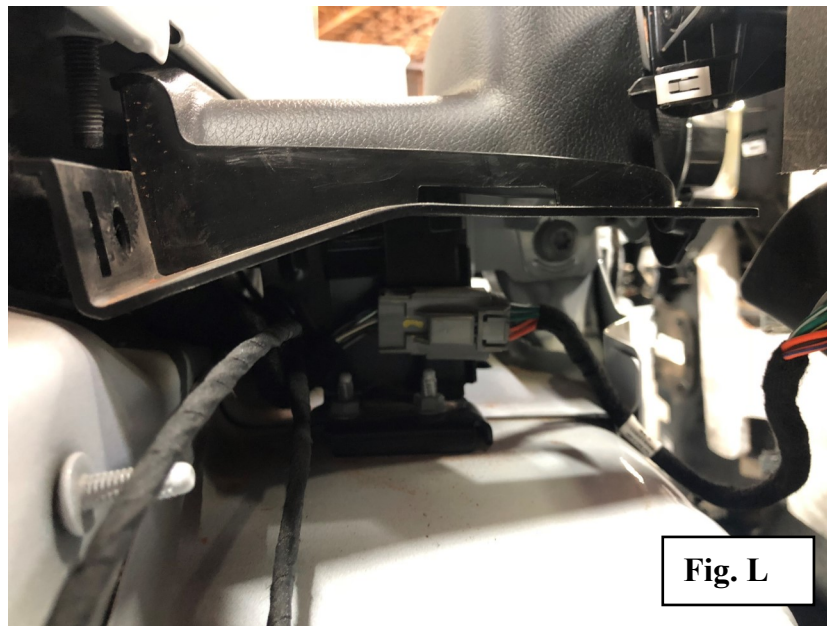




## Installation Instructions: (Part # SB7743, SB7745, SB7746) JL HD PIVOT



**Fig. K**



**Fig. L**

**Step 9:** With a 10mm socket, remove the bolt securing the passenger tail light (**Fig. M**). Disconnect tail light by pulling out the red tab and pressing the black tab. Then pull the connector (**Fig. N**).

For Technical Support/Warranty Information please call 310-762-9944

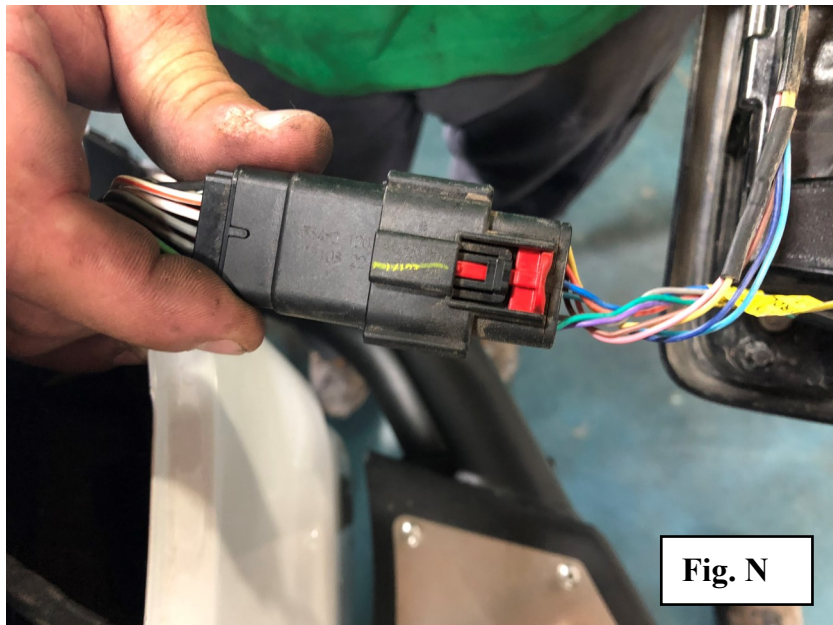
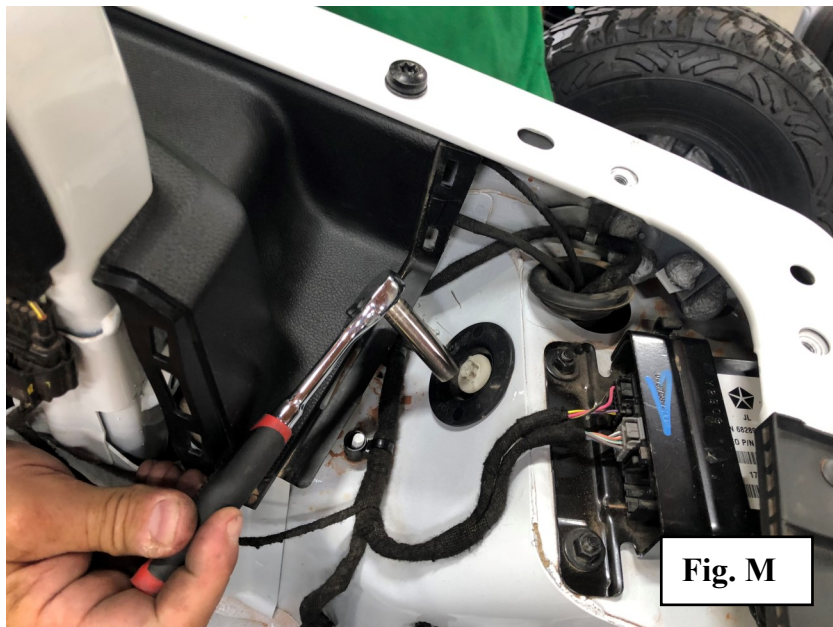
---

Smittybilt, 400 W Artesia, Compton, CA 90220





**Installation Instructions:**  
(Part # SB7743, SB7745, SB7746)  
JL HD PIVOT



**Step 10:** Very Carefully remove and save sticker covering hinge bolts.

**Step 11:** Close the door make sure door is completely latch.

For Technical Support/Warranty Information please call 310-762-9944

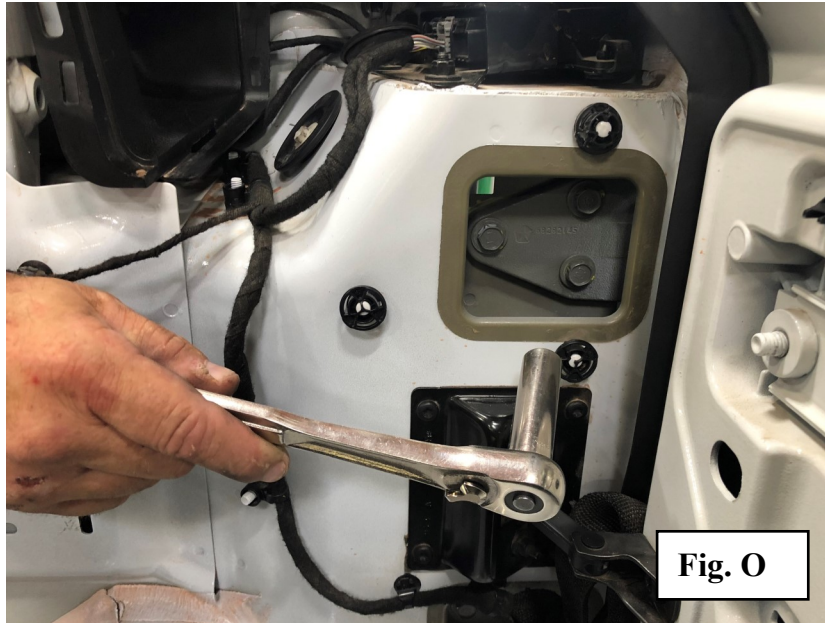
---

Smittybilt, 400 W Artesia, Compton, CA 90220



## Installation Instructions: (Part # SB7743, SB7745, SB7746) JL HD PIVOT

**Step 12:** With a 13mm socket, remove the three (3) bolts from each hinge plate (Fig. O).



**Step 13:** With a T55 torx Socket, remove the four (4) bolts securing the hinge to the tailgate (Fig. P).



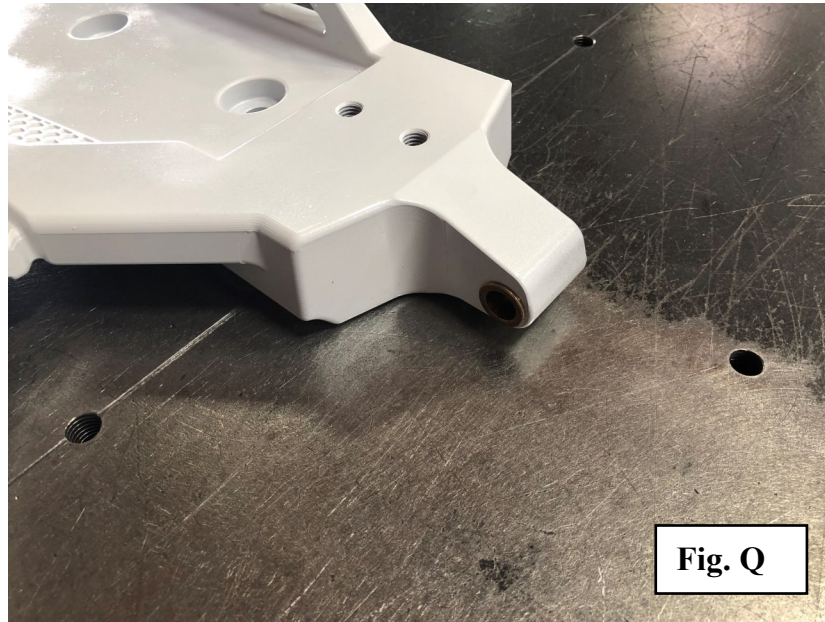
**Step 14:** If your HD Pivot Bracket is pre-assembled, continue on **Step 18**; If not continue on **Step 15**.

For Technical Support/Warranty Information please call 310-762-9944

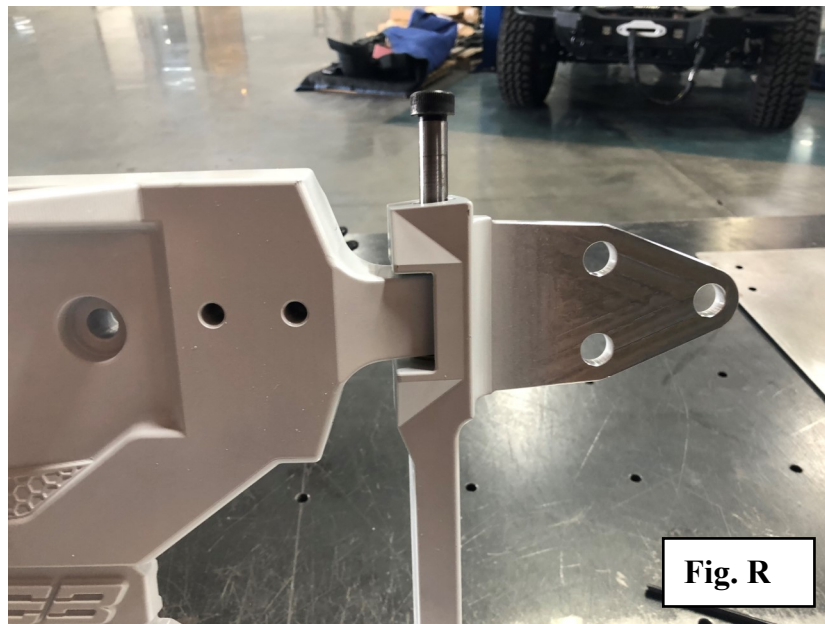


## Installation Instructions: (Part # SB7743, SB7745, SB7746) JL HD PIVOT

**Step 15:** Install the 4 bronze bushings to the reinforcement plate (**Fig. Q**).



**Step 16:** Install the pivot hinge to the reinforcement plate by installing the two (2) M12 shoulder bolts M10 (1.5) thread (**Fig. R**). One in the top and one in the bottom. Add blue Loctite. Torque to 45ft-lbs.



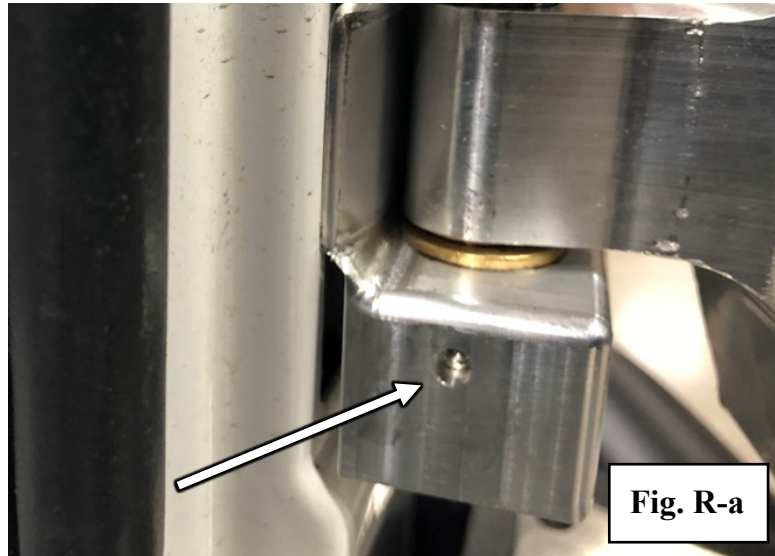
**Step 17:** Install the set screw in the top and bottom of the pivot hinge. Add blue Loctite. See (**Fig. R-a**).

For Technical Support/Warranty Information please call 310-762-9944





## Installation Instructions: (Part # SB7743, SB7745, SB7746) JL HD PIVOT



**Step 18:** Install HD pivot assembly. Start by inserting the pivot hinge to the OE hinge location. Use **M10 (1.5) X 55** bolt and washer to secure the HD bracket to the tail-gate's original hinge location (**Fig. S**).



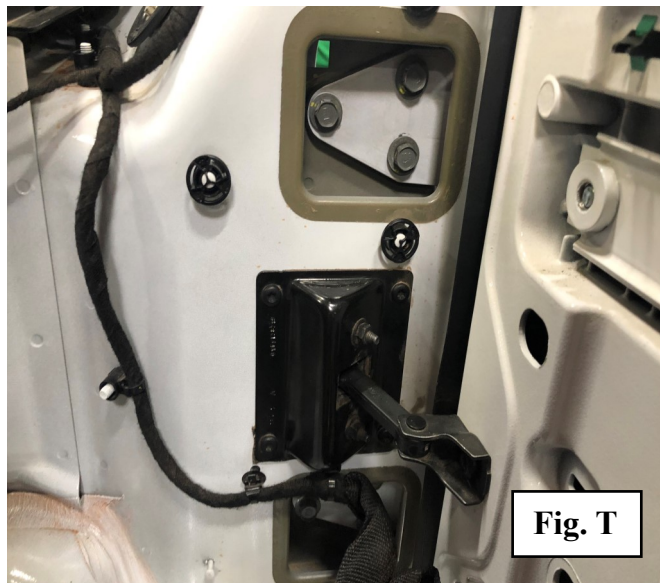
**Step 19:** In the inside of the quarter panel secure hinge pivot ears with the **OE** hardware removed previously. Torque to **23ft-lbs (Fig. T)**. Place the stickers previously removed on Step 10.

**NOTE:** *If the stickers have suffered any damage please reorder new ones. These are very important as they keep carbon monoxide from entering the cabin.*

For Technical Support/Warranty Information please call 310-762-9944



**Installation Instructions:**  
(Part # SB7743, SB7745, SB7746)  
JL HD PIVOT



**Step 20:** Insert the reinforcement bracket in the passenger tail light hole. Secure the reinforcement bracket using (6) OE bolts and (6) M8 spinning washer nuts (**Fig. U**).



**Step 21:** If installing kit # SB7743 continue in Step 22.

If installing kit # SB7745 continue in Step 39.

If installing kit # SB7746 continue in Step 50.

**For Technical Support/Warranty Information please call 310-762-9944**

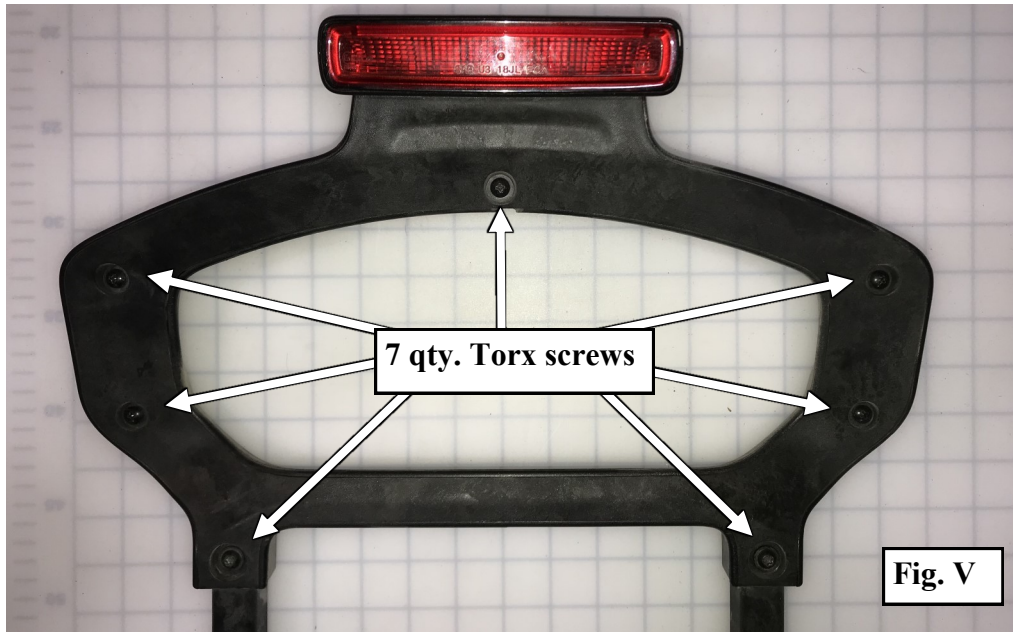




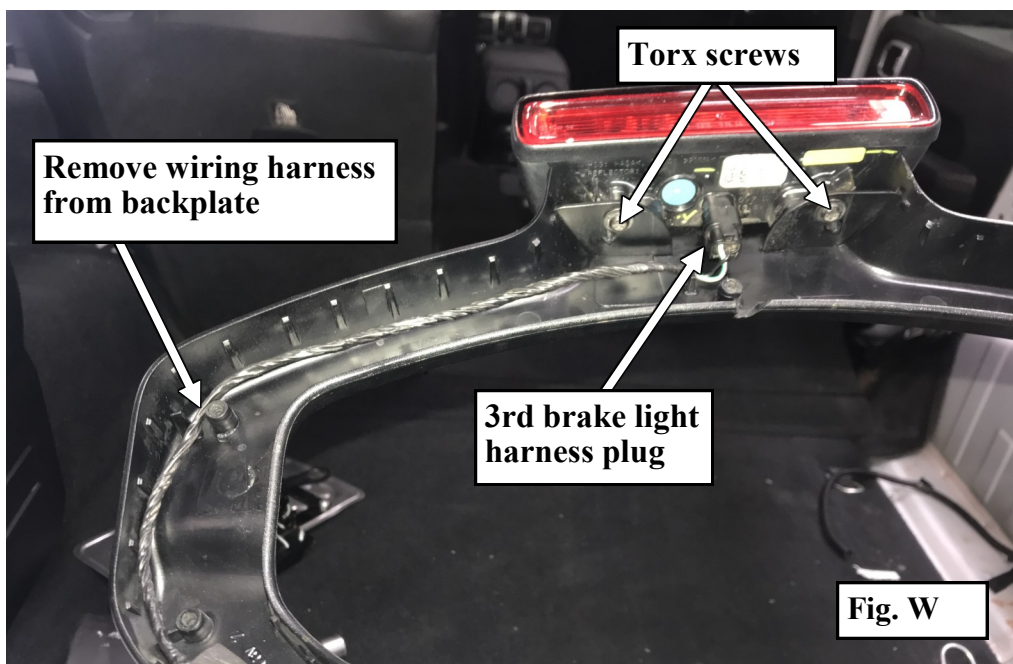
## Installation Instructions:

(Part # SB7743, SB7745, SB7746)  
JL HD PIVOT

**Step 22:** Place the OE tire carrier face up on a clean work area. With a Torx bit remove the seven (7) screws securing the backplate to the 3rd brake light frame (**Fig. V**).



**Step 23:** Remove the two (2) Torx screws securing the 3rd brake light to the frame. Carefully unplug the harness from the 3rd brake light and remove the harness from the backplate (**Fig. W**). Set the OE 3rd brake light aside for reinstallation later.



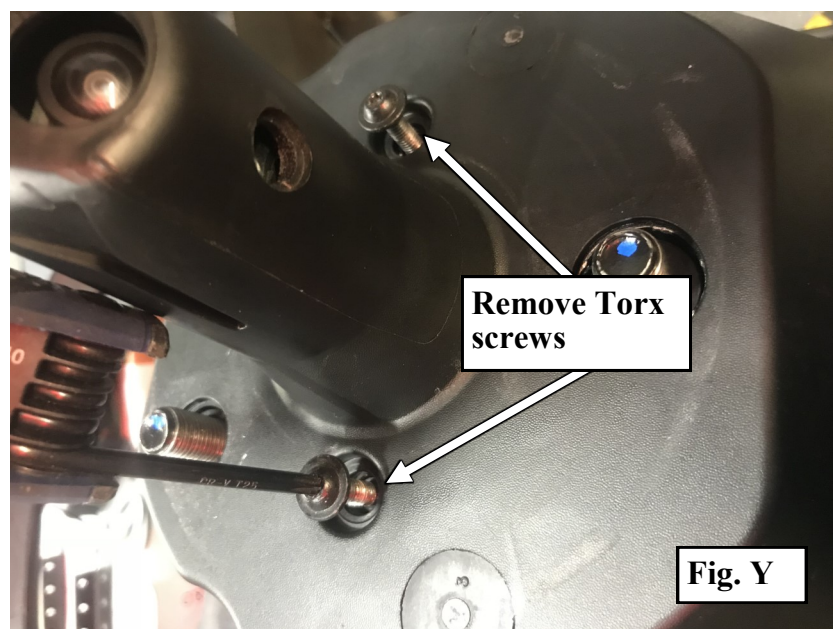
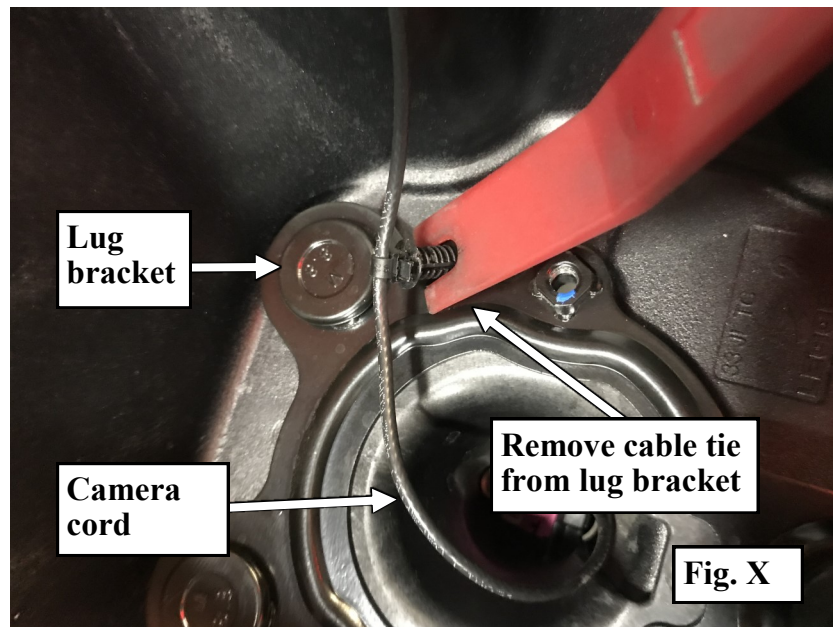
For Technical Support/Warranty Information please call 310-762-9944



## Installation Instructions:

(Part # SB7743, SB7745, SB7746)  
JL HD PIVOT

**Step 24:** Turn the OE tire carrier over and carefully remove the camera cord cable tie from the lug bracket (**Fig. X**). Turn the carrier right side up, remove the two (2) torx screws on either side of the camera cone that secures the lug bracket. Save these screws for reinstallation (**Fig. Y**). Push the lug bracket out of the carrier, being careful not to damage the camera cord.



For Technical Support/Warranty Information please call 310-762-9944

Smittybilt, 400 W Artesia, Compton, CA 90220



## Installation Instructions: (Part # SB7743, SB7745, SB7746) JL HD PIVOT

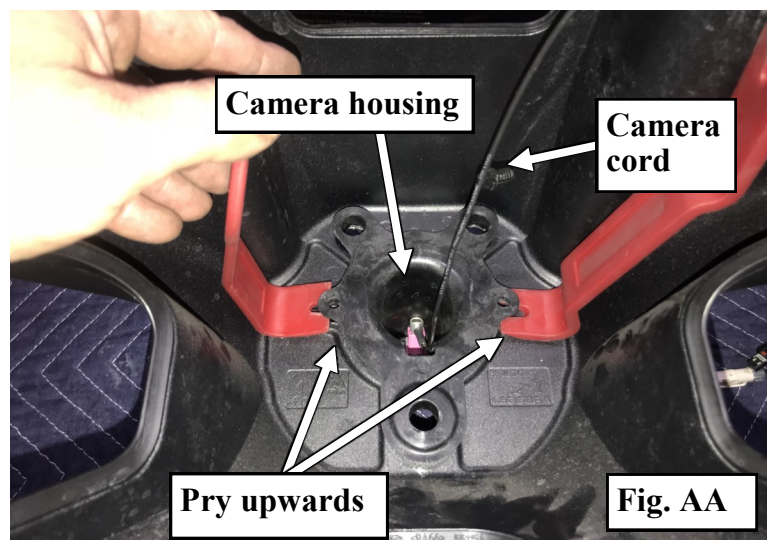
**Step 25:** With the tire carrier lying flat on your clean work surface, use a heat gun in a slow circular motion, to warm up the lower half of the camera cone (**Fig. Z**).

**Be very careful to not apply heat anywhere near the camera or its lens!**

After about 3 minutes, check the temperature at the base of the nose cone. It should be hot enough that it is uncomfortable to touch for longer than 5-10 seconds, if not repeat this step.



**Step 26:** Turn the tire carrier over, with (2) small pry bars on opposing sides and moderate force, pry up on the camera housing flanges without pinching camera cord (**Fig. AA**). If the base of the nose cone is heated sufficiently, the camera housing should pop out. If this doesn't happen within 10-20 seconds, repeat **Step 25**.



For Technical Support/Warranty Information please call 310-762-9944

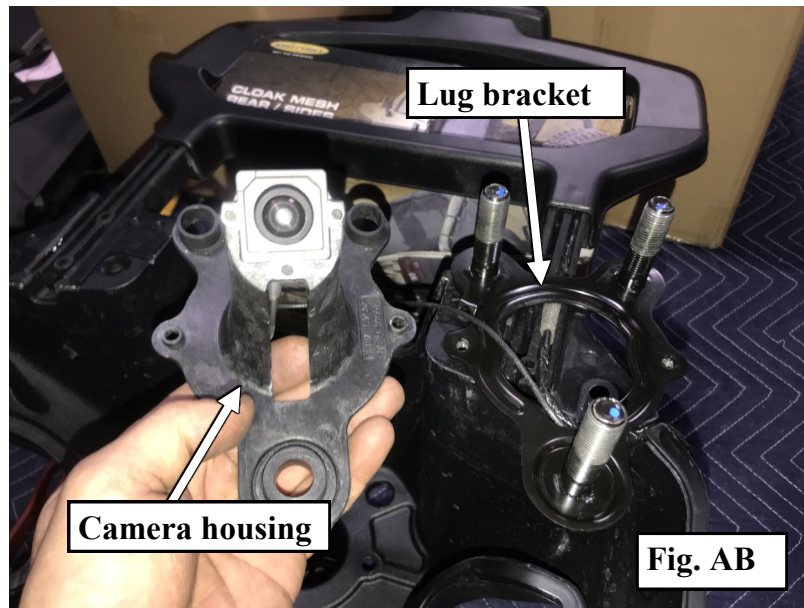




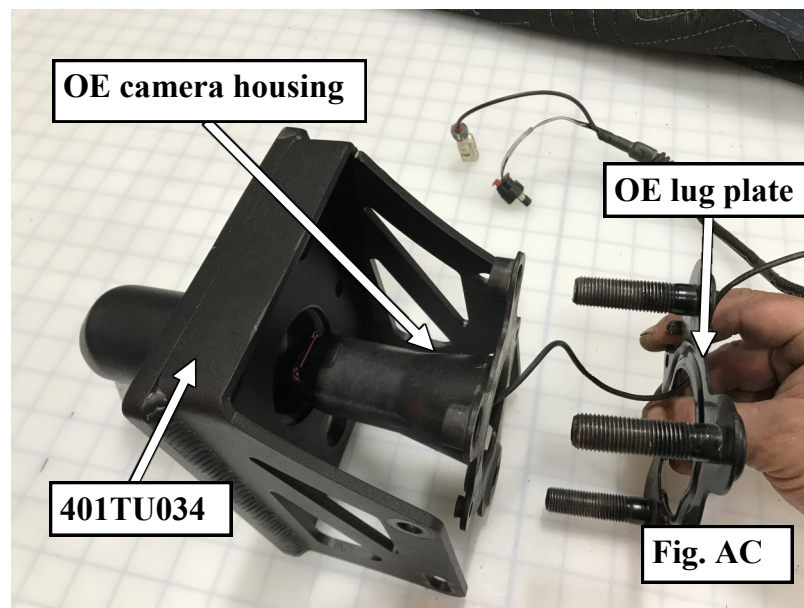
## Installation Instructions:

(Part # SB7743, SB7745, SB7746)  
JL HD PIVOT

**Step 27:** When the camera housing pops out, carefully remove the lug bracket, camera housing and wiring harness from the OE tire carrier (**Fig. AB**).



**Step 28:** Locate the **Adjustable Wheel Mount Bracket (401TU034)** and carefully install the OE camera housing and lug plate. Use the two (2) **M6(1.0) X 20mm** counter-sunk screws provided to tighten the assembly (**Fig. AC**). Set aside for now.

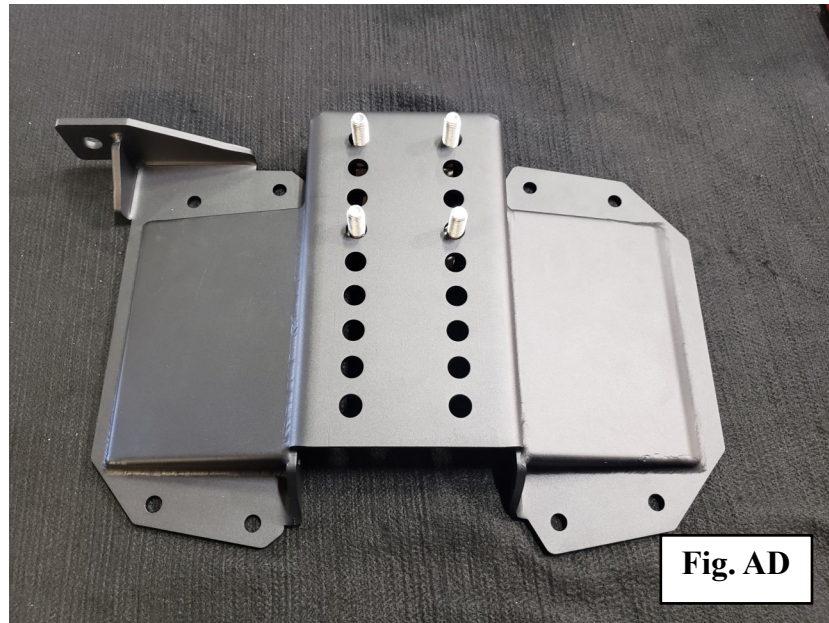


For Technical Support/Warranty Information please call 310-762-9944



## Installation Instructions: (Part # SB7743, SB7745, SB7746) JL HD PIVOT

**Step 29:** Install the (2) 84-401TU078 M12 bolt plates to the tire carrier mount (Fig. AD).



**Step 30:** Use the OE Hardware to install the tire carrier mount to tail gate (Fig. AE).



For Technical Support/Warranty Information please call 310-762-9944

---

Smittybilt, 400 W Artesia, Compton, CA 90220





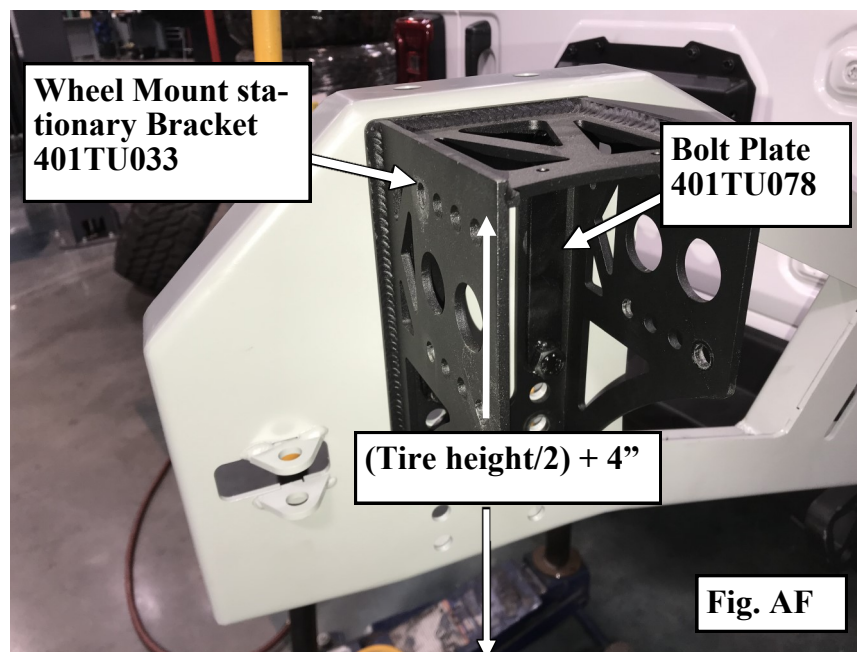
## Installation Instructions:

(Part # SB7743, SB7745, SB7746)  
JL HD PIVOT

**Step 31:** Locate Wheel Mount Stationary Bracket (401TU033), Bolt Plate (401TU078), and Hardware Pack (7743-03).

**NOTE:** To figure out a good initial mounting height for your spare tire, use this formula;  $(\text{tire height}/2) + 4"$ . For a 37" tire this would be 22.5". This will be the distance from the deck of the bumper to the top of the stationary bracket.

Mount the Stationary Bracket to the Tire carrier mount using the (2) Bolt Plates and M12 nuts/washers from the Hardware pack. Torque to 55ft-lbs. (Fig. AF)



**Step 32:** Place your spare tire face down on the floor. Using a straight edge and small square, measure the backspacing (Fig. AG).

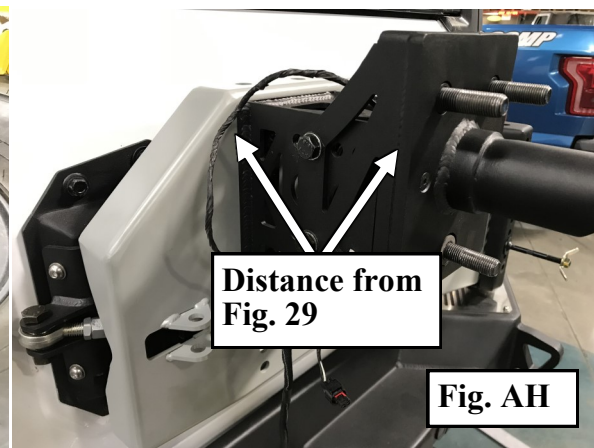
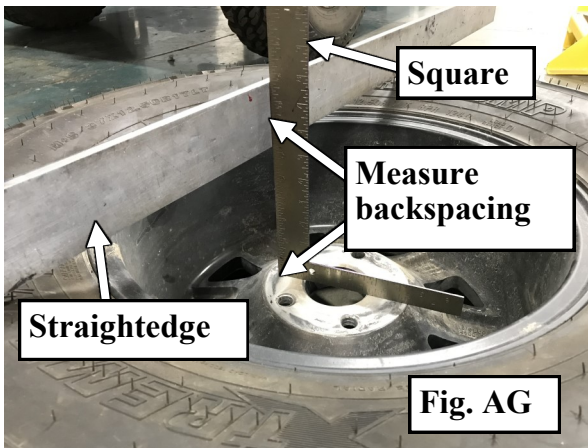
Install the previously assembled Adjustable Tire Mount from **Step 28** onto the Stationary Bracket. Position the Bracket so that the distance from the face of the Tire carrier mount, to the face of the Adjustable Tire Mount (Fig. AH) is equal to, or slightly longer than the measurement of the backspacing (Fig. AG). Secure the assembly using the remaining M10 hardware from **Hardware Pack (7743-03)**. Torque M10 hardware to 30ft-lbs.

For Technical Support/Warranty Information please call 310-762-9944

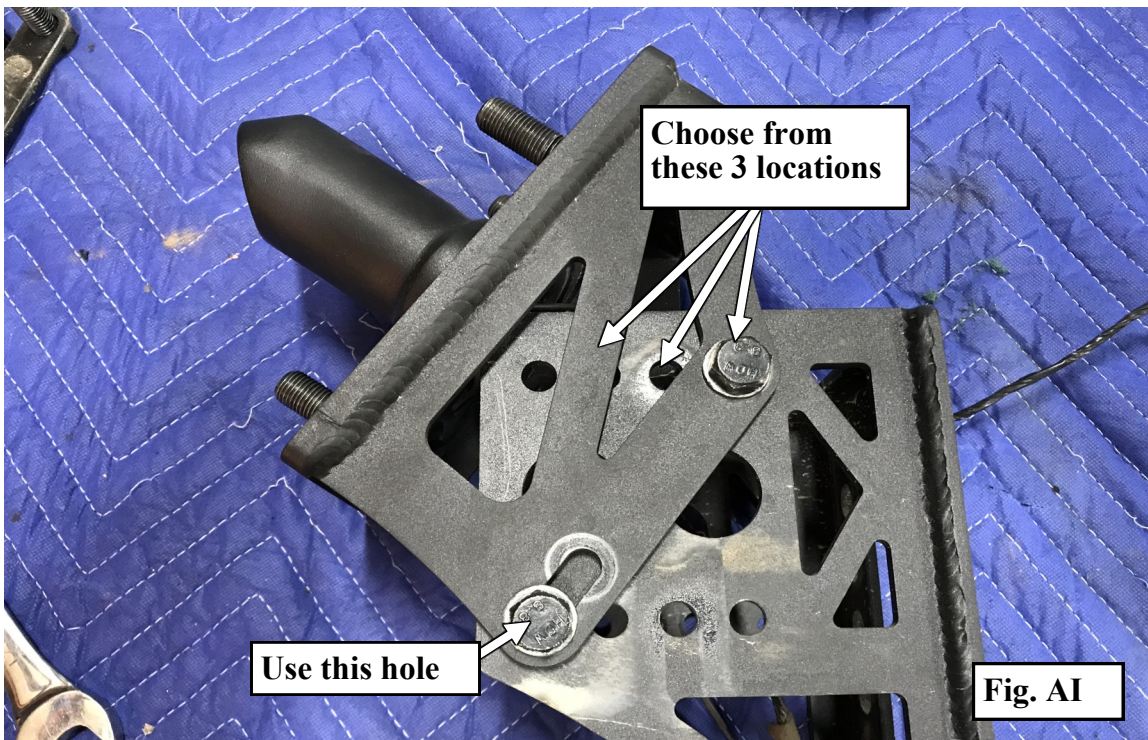


# Installation Instructions:

(Part # SB7743, SB7745, SB7746)  
JL HD PIVOT



**Step 33:** The Adjustable mount can also be adjusted for (3) different slant configurations (Fig. AI). With the lower bolt in the outermost hole, choose the angle that matches your need.



**Step 34:** On the inside of the tailgate, re-connect the OE camera and 3rd brake light harnesses. Run the new License Plate light harness along the OE harness securing it with cable ties as needed (Fig. AJ).

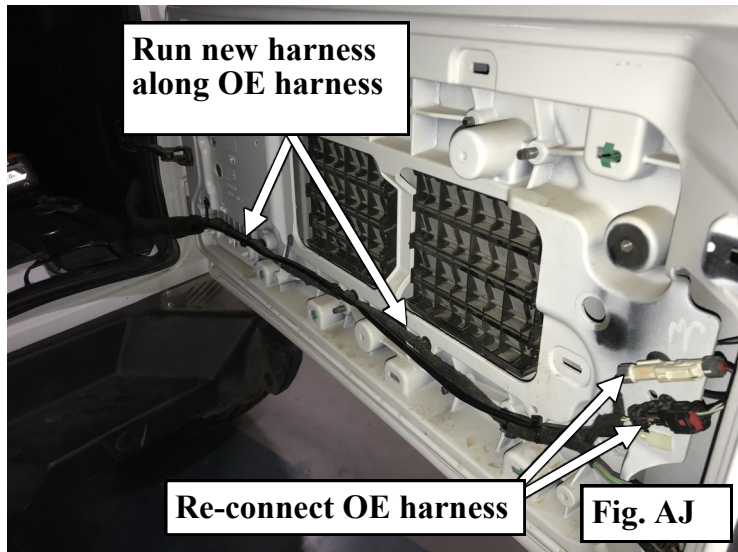
For Technical Support/Warranty Information please call 310-762-9944



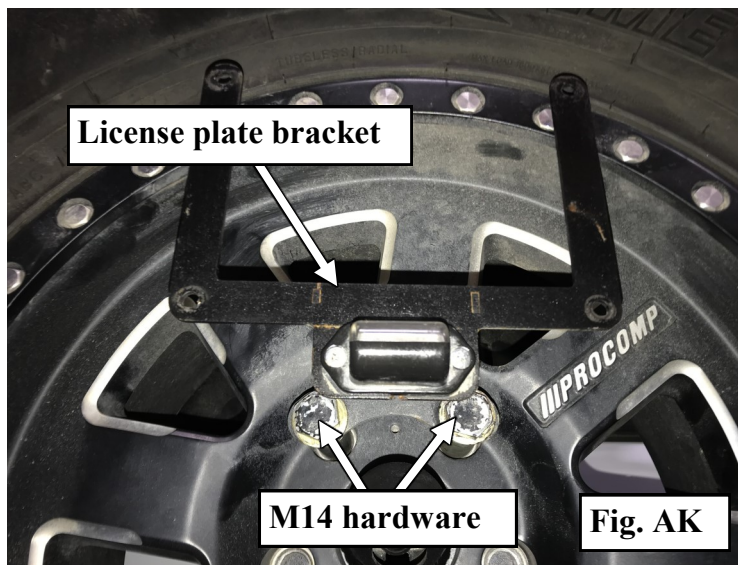


## Installation Instructions:

(Part # SB7743, SB7745, SB7746)  
JL HD PIVOT



**Step 35:** Install your License Plate bracket supplied with your bumper to the extended length lug nuts with (2) M14 bolts and washers (**Fig. AK**). Tighten these to 55ft-lbs.

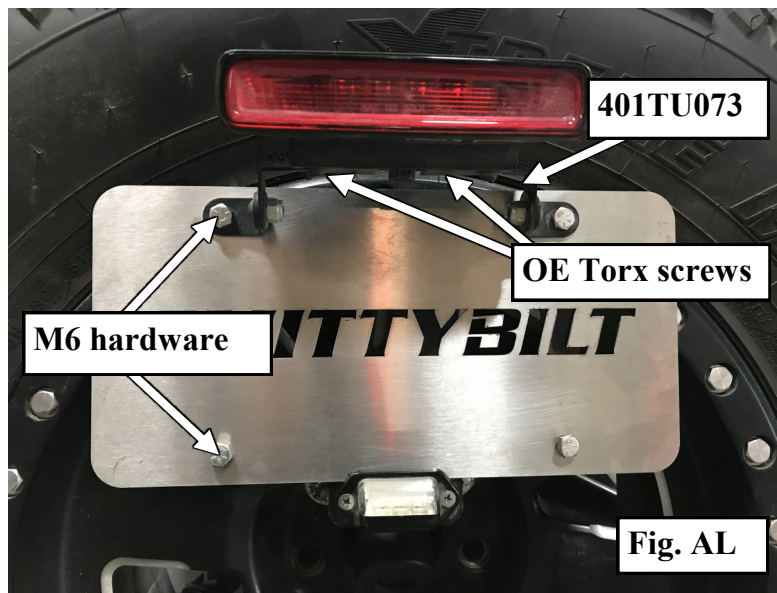


**Step 36:** Install your License Plate to the Bracket with supplied (2 qty.) M6 hardware in the lower holes. Locate 3rd Brake Light Bracket (401TU073) install the OE 3rd brake light on it using the OE Torx screws. Install this assembly over your license plate using the upper two mounting holes and remaining (2 qty.) M6 hardware (**Fig. AL**). Tighten M6 hardware to 6ft-lbs. and OE Torx screws till just snug.

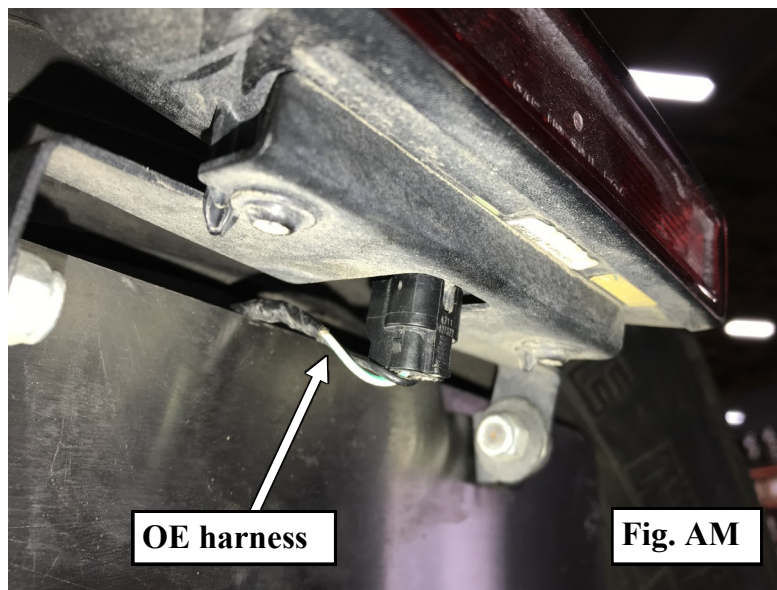
For Technical Support/Warranty Information please call 310-762-9944



## Installation Instructions: (Part # SB7743, SB7745, SB7746) JL HD PIVOT



**Step 37:** Run both light harnesses thru the rim. Plug the OE 3rd brake light harness into the OE 3rd brake light (**Fig. AM**), then connect the license plate light into the new harness installed in **Step 32 (Fig. AN)**.

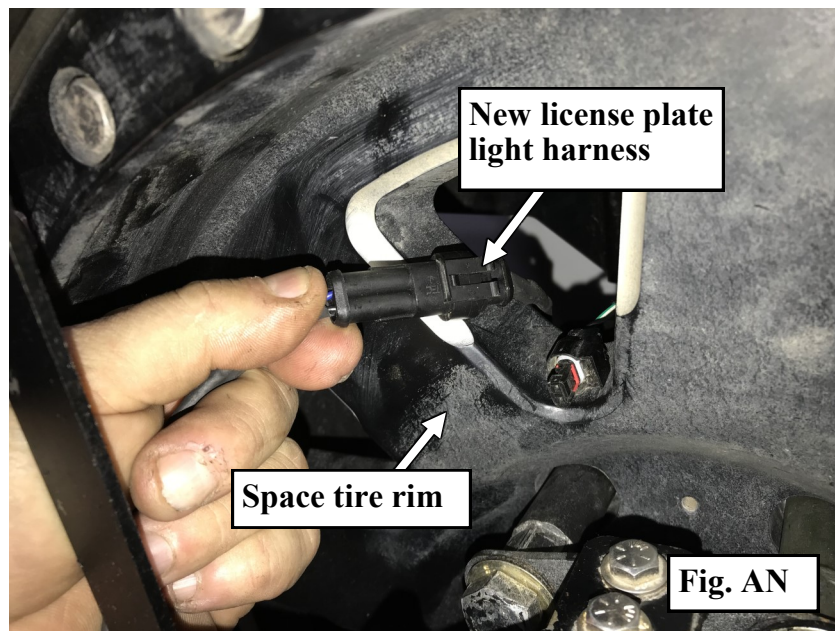


For Technical Support/Warranty Information please call 310-762-9944

Smittybilt, 400 W Artesia, Compton, CA 90220

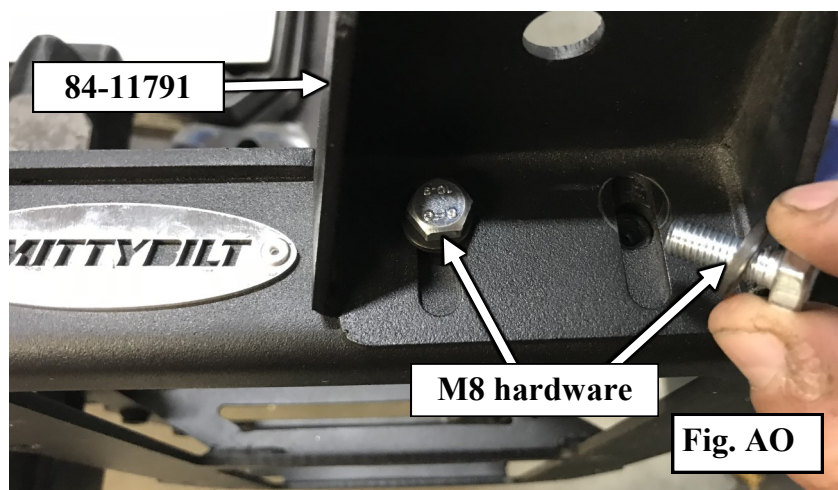


## Installation Instructions: (Part # SB7743, SB7745, SB7746) JL HD PIVOT



**Step 38:** Open and close your tailgate repeatedly to verify function. Double check all hardware and re-torque to spec as necessary. Installation of your tire carrier is complete!

**Step 39:** Using two (2) M8 (1.25) x 25 bolts, two (2) split lock washers, and two (2) flat washers, install the anti-rattle bumper wings (84-11791) to the tire spacer; finger tight as shown in (Fig. AO).



For Technical Support/Warranty Information please call 310-762-9944





## Installation Instructions: (Part # SB7743, SB7745, SB7746) JL HD PIVOT

**Step 40:** Install the OE rubber anti-rattle bumpers into the bumper wings by pulling the nipple through the hole, while slightly twisting the bumper (**Fig. AP**).



**Step 41:** Using M8 hardware previously remove and making sure it is right side up, install the relocation bracket to tail gate sandwiching the relocation spacer between tail gate and relocation bracket.

**NOTE:** *Early versions of this relocation bracket only have one mounting position, later models have two mounting positions allowing for an extra inch of upwards adjustment.*

**Step 42:** Using the provided M8 X 35 X 1.25 bolts and washers, loosely attach the OE tire carrier to the relocation bracket (**84-7721**) (**Fig. AQ**).

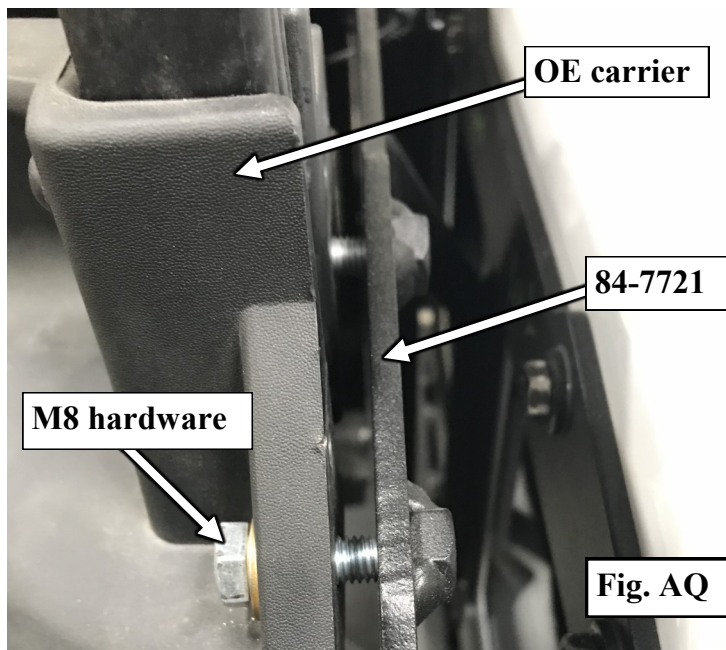
For Technical Support/Warranty Information please call 310-762-9944

---

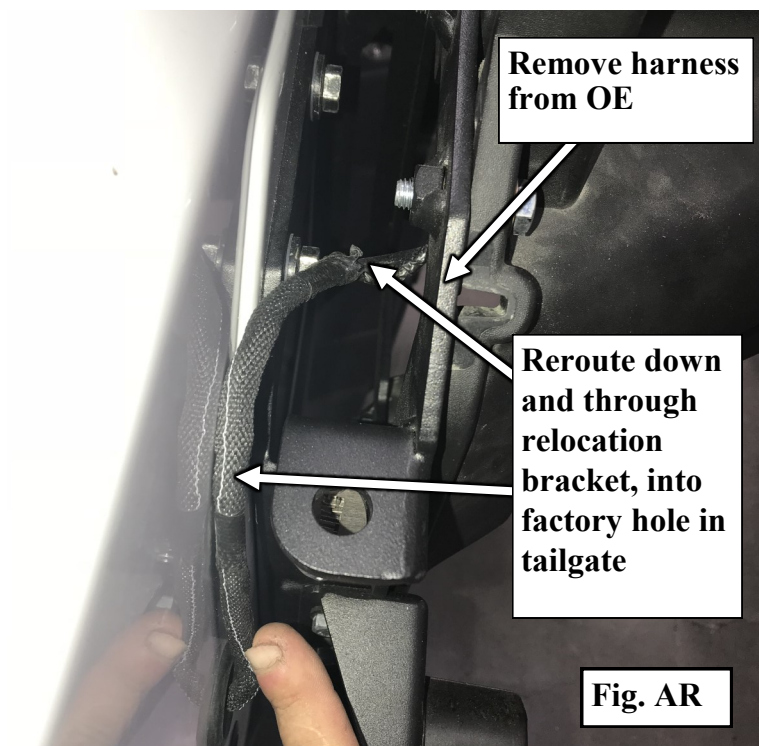
Smittybilt, 400 W Artesia, Compton, CA 90220



## Installation Instructions: (Part # SB7743, SB7745, SB7746) JL HD PIVOT



**Step 43:** Carefully remove the wiring harness from the OE location on the carrier, route it under and through your new relocation bracket (**Fig AR**).



For Technical Support/Warranty Information please call 310-762-9944

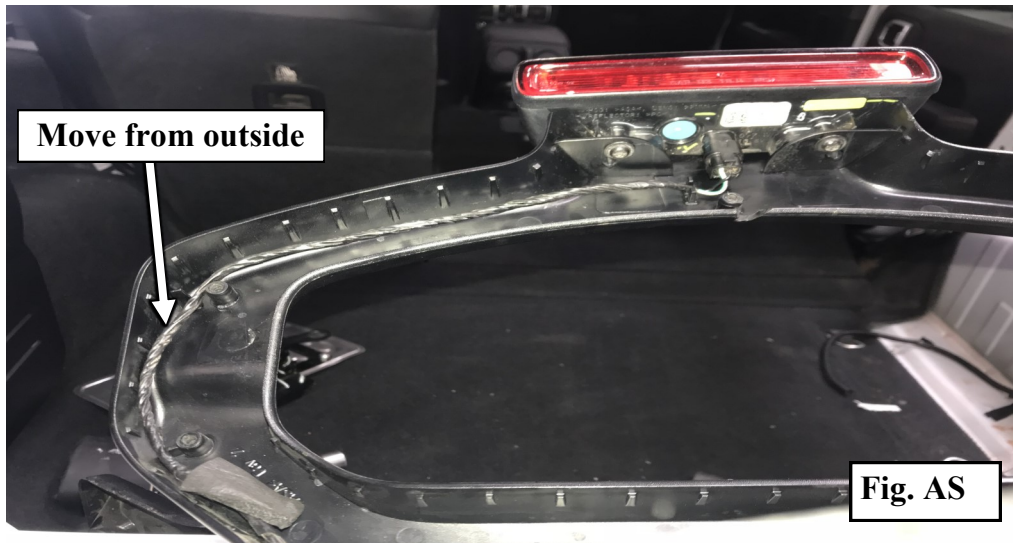
Smittybilt, 400 W Artesia, Compton, CA 90220



## Installation Instructions:

(Part # SB7743, SB7745, SB7746)  
JL HD PIVOT

**Step 44:** If mounting a tire larger than 35" it will be necessary to raise the 3<sup>rd</sup> brake light frame up to clear the top of the tire. With a **T25** Torx bit remove the screws on the faceplate of the 3<sup>rd</sup> brake light frame. Carefully remove the backplate (**Fig AS**), and move the wire harness from the outside of the mounting posts to the inside (**Fig AT**) and carefully feed the extra length down the support post. Re-install the faceplate and tighten the Torx screws snug or about **12in-lbs**.



**NOTE:** *Installing a 37" or larger tire without a reinforcement bracket such as Smittybilt 7743 or Mopar 82215356AB, may void warranty and eventually seriously damage the OE tailgate.*

*If your spare tire is 35" or less, proceed to Step 46.*

For Technical Support/Warranty Information please call 310-762-9944

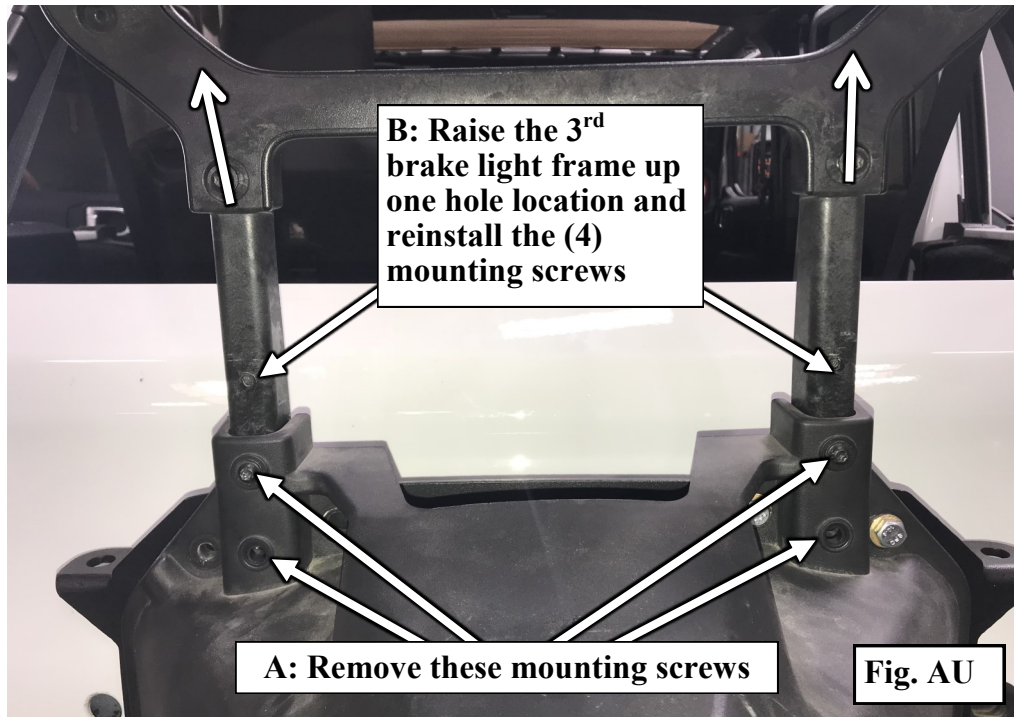




## Installation Instructions:

(Part # SB7743, SB7745, SB7746)  
JL HD PIVOT

**Step 45:** (Step A) Carefully remove the (4) T25 screws securing the frame posts to the OE tire carrier (Fig AU). Raise the frame up to the next hole location and (Step B) reinstall the mounting screws. Tighten until snug or about **24in-lbs.**



**Step 46:** Re-check to make sure wiring harness is safely routed, hand tighten the (8) Carrier mounting bolts, then torque them to **24ft-lbs.**

**Step 47:** Reversing the process in **Steps 2 & 3**, feed the brake light and camera harness through the hole in the tailgate. Re-seat the wiring grommet, reconnect the 3<sup>rd</sup> brake light and camera to the harness on the inside of the tailgate and re-install the tailgate panel by aligning the tabs and pressing into place.

**Step 48:** Loosely install the spare tire and adjust the anti-rattle bumpers so that they will make firm contact when the spare tire is fully tightened. (Fig. AV) When satisfied with fitment torque the spare tire to **59ft-lbs** and the M8 bolts to **24ft-lbs.**

For Technical Support/Warranty Information please call 310-762-9944



**Installation Instructions:**  
(Part # SB7743, SB7745, SB7746)  
JL HD PIVOT



**Step 49:** Continue on Step 34 to 38 to finish installation.

**Step 50:** Install your OE tire carrier to tail gate sandwiching the relocation spacer between the tail gate and OE tire carrier. Install your spare tire to the OE tire carrier.

**Step 51:** Your installation is now complete.

For Technical Support/Warranty Information please call 310-762-9944

---

Smittybilt, 400 W Artesia, Compton, CA 90220



# Installation Instructions:

(Part # SB7743, SB7745, SB7746)  
JL HD PIVOT

Use this only as a guide for hardware without a called out torque specification in the instruction manual.

<b>Bolt Torque and ID</b>						
<b>Decimal System</b>			<b>Metric System</b>			
All Torques in Ft. Lbs. Maximums						
Bolt Size	Grade 5	Grade 8	Bolt Size	Class 9.8	Class 10.9	Class 12.9
5/16	15	20	M6	5	9	12
3/8	30	45	M8	18	23	27
7/16	45	60	M10	32	45	50
1/2	65	90	M12	55	75	90
9/16	95	130	M14	85	120	145
5/8	135	175	M16	130	165	210
3/4	185	280	M18	170	240	290

<p>1/2-13x1.75 HHCS</p> <p><span style="border: 1px solid black; padding: 2px;">D</span> <span style="border: 1px solid black; padding: 2px;">T</span> <span style="border: 1px solid black; padding: 2px;">L</span> <span style="border: 1px solid black; padding: 2px;">X</span></p>	<p>M12-1.25x50 HHCS</p> <p><span style="border: 1px solid black; padding: 2px;">D</span> <span style="border: 1px solid black; padding: 2px;">T</span> <span style="border: 1px solid black; padding: 2px;">L</span> <span style="border: 1px solid black; padding: 2px;">X</span></p>
<p><b>Grade 5    Grade 8</b> (No. of Marks + 2)</p>	
<p>G = Grade (Bolt Strength) D = Nominal Diameter (Inches) T = Thread Count (Threads per Inch) L = Length (Inches) X = Description (Hex Head Cap Screw)</p>	<p>P = Property Class (Bolt Strength) D = Nominal Diameter (Millimeters) T = Thread Pitch (Thread Width, mm) L = Length (Millimeters) X = Description (Hex Head Cap Screw)</p>

For Technical Support/Warranty Information please call 310-762-9944





# Installation Instructions:

(Part # *SB7743, SB7745, SB7746*)  
*JL HD PIVOT*

### Product cleaning and maintenance instructions

Stainless Steel Finish – Aluminum polish may be used to polish small scratches and scuffs on the finish. Mild soap, window or glass cleaner may be used to clean the finish. Dual state powder coat finish – Mild soap, window or glass cleaner may be used to clean the finish. In order to protect the finish, you may wax your product on a regular basis with pure carnauba automotive wax. Do not use any types of soap, polish or was that contains abrasive that could damage the finish. Textured coated finishes should be cleaned with a mild soap on a damp sponge. Do not apply polish or was that requires to be removed by means of buffing. This type of wax is commonly used at car wash facilities. Chrome Finish – Mild soap, window or glass cleaner may be used to clean the finish. In order to protect the finish, you should wax your product on a regular basis with pure carnauba automotive wax. Do not use any types of soap, polish or was that contains abrasive that could damage the finish.

### Limited Warranties

Smittybilt's products are covered under the following limited warranties only. Note that the duration of the limited warranty differs according to the material and finish of the product purchased. Subject to the duration and conditions of the limited warranty stated below, Smittybilt warrants to the original retail purchaser that its products are free from defects in material and workmanship. All other warranties and representations express or implied, are hereby disclaimed, including fitness for merchantability and buyer's intended use or purpose. All parts are sold "AS IS" except for the limited warranties granted herein. Buyer assumes all risks as to the selection, suitability and performance of all goods and products selected. This limited warranty does not cover damage or impairment in any part due to misuse, improper installation, accident or contact with on-road or off-road hazards, product modification, improper or inadequate cleaning and/or maintenance. Smittybilt is not responsible for items damaged during shipping. This warranty is not transferable from the original buyer. For the original Buyer to be eligible for the limited warranty coverage, the Buyer must provide proof of purchase. Smittybilt strongly recommends returning the warranty registration card.

Customer's remedy hereunder shall be limited only to repair or replacement (at Smittybilt's option) of any defective part(s) returned to Smittybilt at customer's expense. The determination of whether or not a returned part is defective or subject to coverage under the limited warranties stated herein shall be made at Smittybilt's sole discretion.

To assure product quality, Smittybilt reserves the right to change product design, material, specification and finishes without prior notice to customers. This limited warranty gives you specific legal rights and you may also have other rights, which may vary from state to state. Some states do not allow limitations on how long an implied warranty lasts, so the above limitations may not apply as to you. Also, some states do not allow the exclusion or limitation of incidental or consequential damages, so the above limitations or exclusions may not apply to you. Smittybilt reserves the right to discontinue product lines and substitute products or provide other remedies than those listed in this limited warranty for those discontinued products.

### Warning

Rollover and other types of vehicle accidents may result in serious injury or death to you, your passengers and others sharing the road. Smittybilt accessories are decorative and are not intended to reduce or avoid injury or damage in the event of an accident. The weight and location of Smittybilt accessories may affect your vehicles' handling, stability and performance, creating an increased risk of accident or rollover. Before installing any accessory, check state laws and assure that the accessory will not obscure any lights or interfere with proper operation on your vehicle's safety equipment. Consult your owner's manual and the Smittybilt instructions, or additional safety information. Smittybilt products, nor the warnings contained herein, are not a substitute for your safe driving. Don't drink and drive, always use seat belts and don't drive faster than conditions permit.

**For Technical Support/Warranty Information please call 310-762-9944**

---

**Smittybilt, 400 W Artesia, Compton, CA 90220**