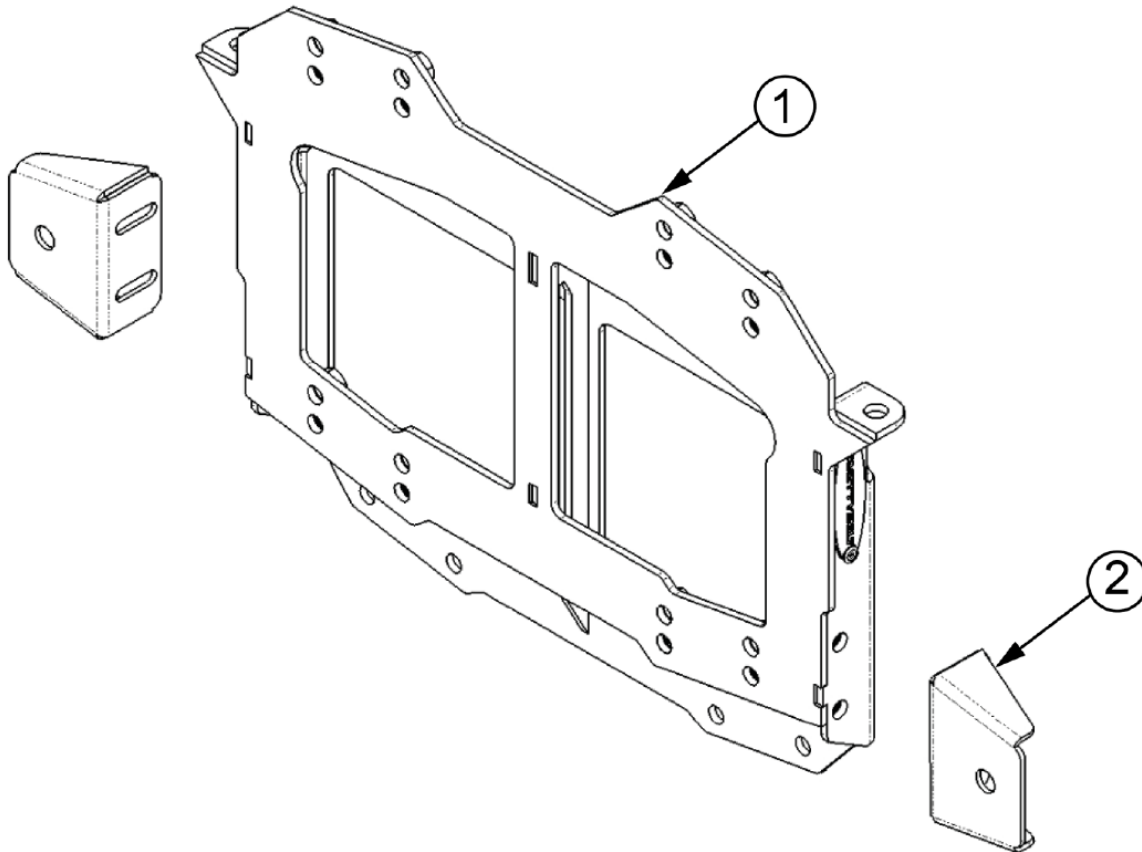




WWW.SMITTYBILT.COM

**Installation Instructions
JL Tire Relocation Bracket
2018+ Wrangler JL/JLU
Part #: S/B7721**

NOTE: Be sure to check that all hardware and components are present before attempting to install this part. If you are missing any hardware or components, please contact technical support.



Parts Included	QTY	ID
84-11787 Tire Relocation Bracket	1	1
84-11791 Bumper Wing	2	2
M8-1.25x35mm Hex Bolt 10.9	12	
M8 Flat Washer	12	
M8 Split Lock Washer	4	
7721-02 Push in Hole Plug	2	

For Technical Support/Warranty Information please call 1-800-776-0767
Smittybilt, 400 W. Artesia Blvd Compton, CA 90220



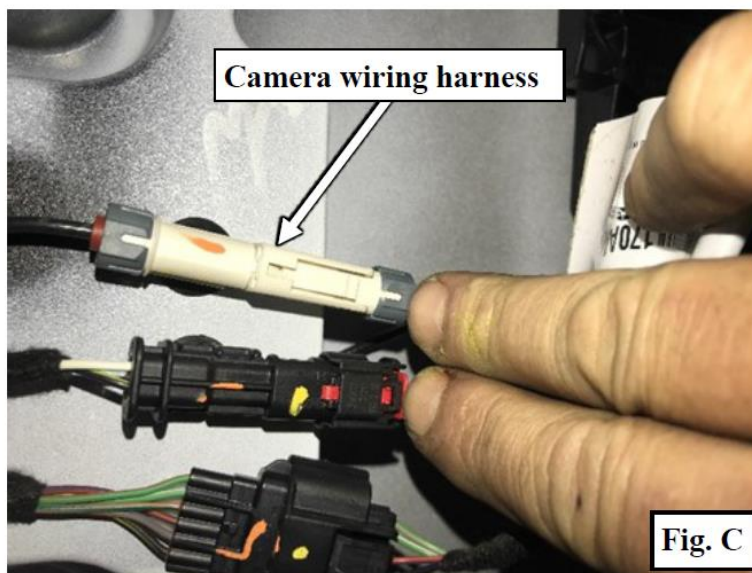
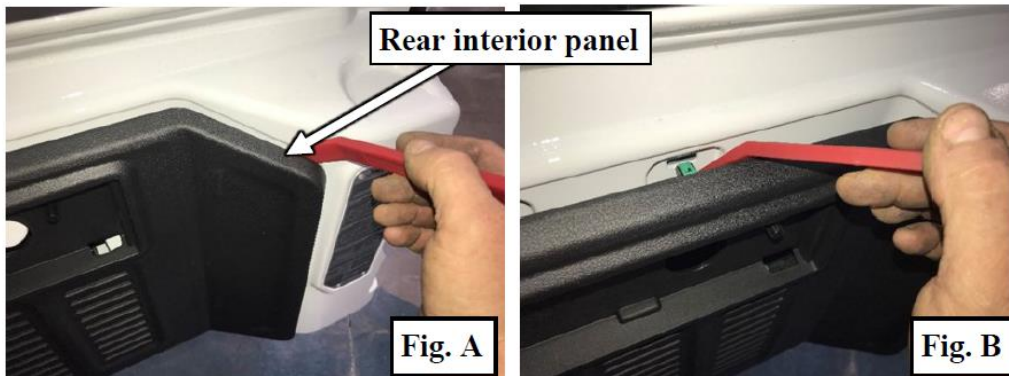
WWW.SMITTYBILT.COM

**Installation Instructions
JL Tire Relocation Bracket
2018+ Wrangler JL/JLU
Part #: S/B7721**

NOTE: Carefully read this entire instruction manual thoroughly before attempting to assemble and/or install this product. Photos may differ slightly from your vehicle and the parts you receive; the installation process will remain the same.

Step 1: Remove the spare tire from OE tire carrier. Consult your owner's manual if necessary.

Step 2: Open tailgate, starting on the latch side, with a plastic pry bar, carefully remove the rear interior panel (**Fig. A, B**) and set aside. Once the panel is removed, carefully disconnect brake light (black connector in middle) by pulling the red locking tab outwards and then squeezing the retaining tab while pulling the two halves of the connector apart. The camera wiring harness (white connector on top) doesn't have a locking tab and is disconnected the same way. **Do not pull directly on wiring (Fig C).**



For Technical Support/Warranty Information please call 1-800-776-0767
Smittybilt, 400 W. Artesia Blvd Compton, CA 90220



WWW.SMITTYBILT.COM

**Installation Instructions
JL Tire Relocation Bracket
2018+ Wrangler JL/JLU
Part #: S/B7721**

Step 3: On the outside of the tailgate, gently remove the wiring grommet. Feed the disconnected wiring harness through the hole on the tailgate. Use a trim tool to gently pry the grommet if needed (**Fig. D**).



WARNING: REMOVE WIRING HARNESS COMPLETELY FROM THE OE TAILGATE, THROUGH THE EXTERIOR HOLE. FAILURE TO DO SO MAY RESULT IN DAMAGE TO THE WIRING HARNESS.

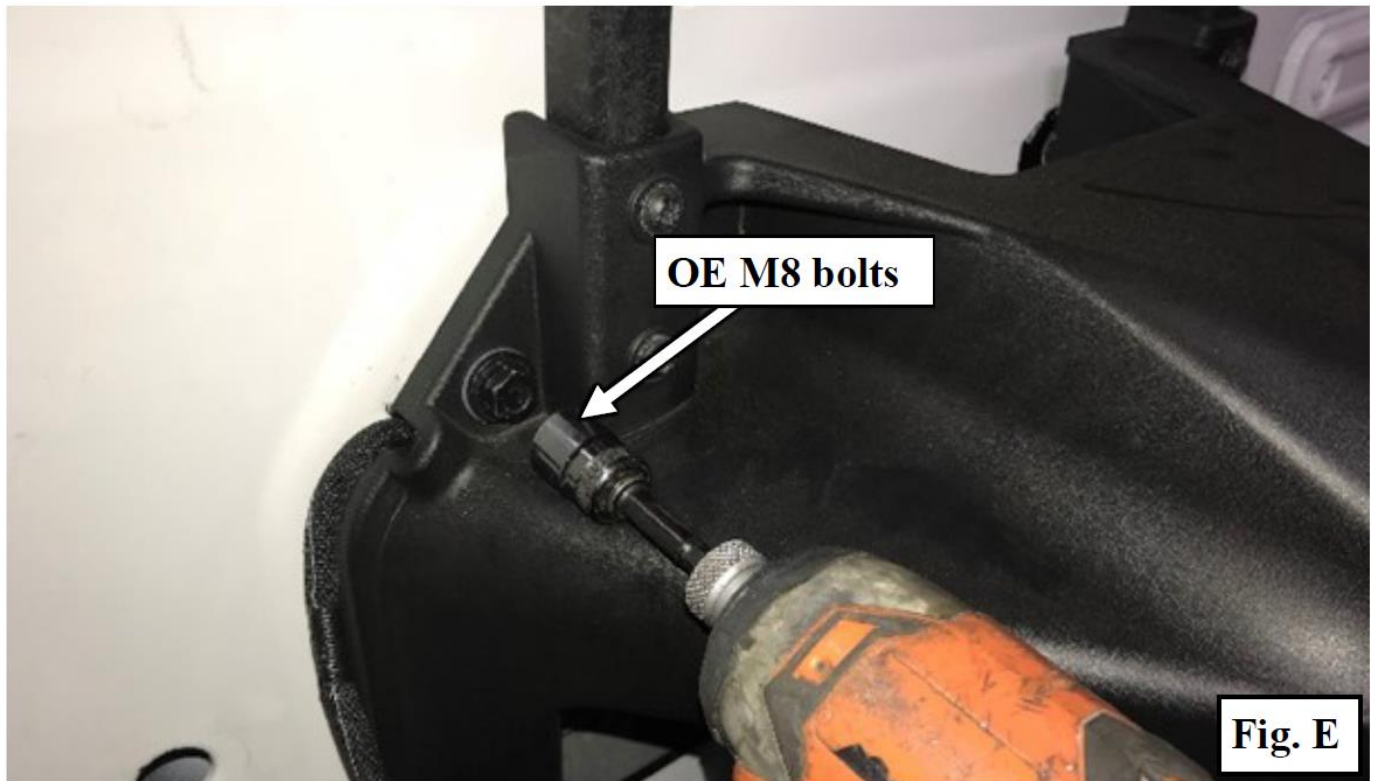
For Technical Support/Warranty Information please call 1-800-776-0767
Smittybilt, 400 W. Artesia Blvd Compton, CA 90220



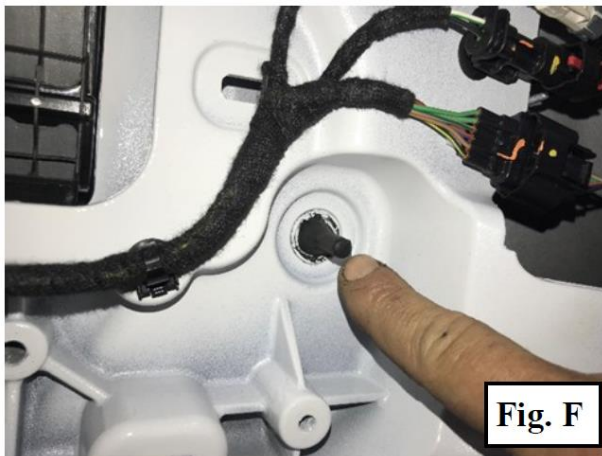
WWW.SMITTYBILT.COM

**Installation Instructions
JL Tire Relocation Bracket
2018+ Wrangler JL/JLU
Part #: S/B7721**

Step 4: Use an **13mm** socket to remove the eight (8) **OE M8 bolts** holding the tire carrier to the tailgate (**Fig. E**).



Step 5: Remove the two (2) Rubber anti-rattle bumpers from the tailgate by pinching the peg on the inside of the tailgate (**Fig. F**) while pulling the bumper from the outside (**Fig. G**).



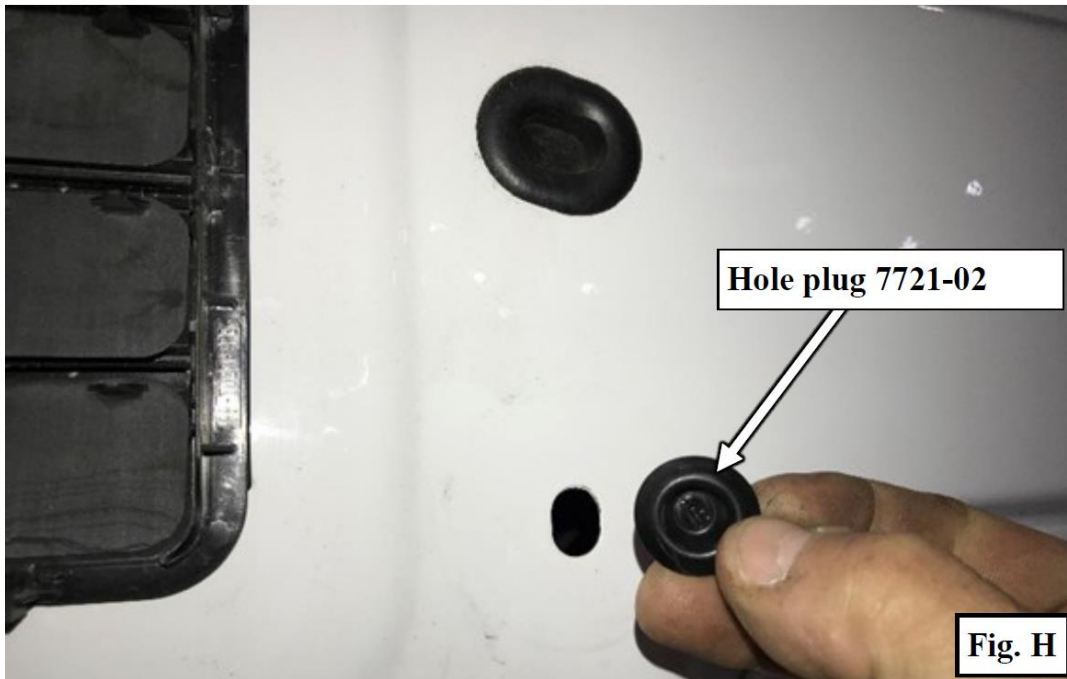
For Technical Support/Warranty Information please call 1-800-776-0767
Smittybilt, 400 W. Artesia Blvd Compton, CA 90220



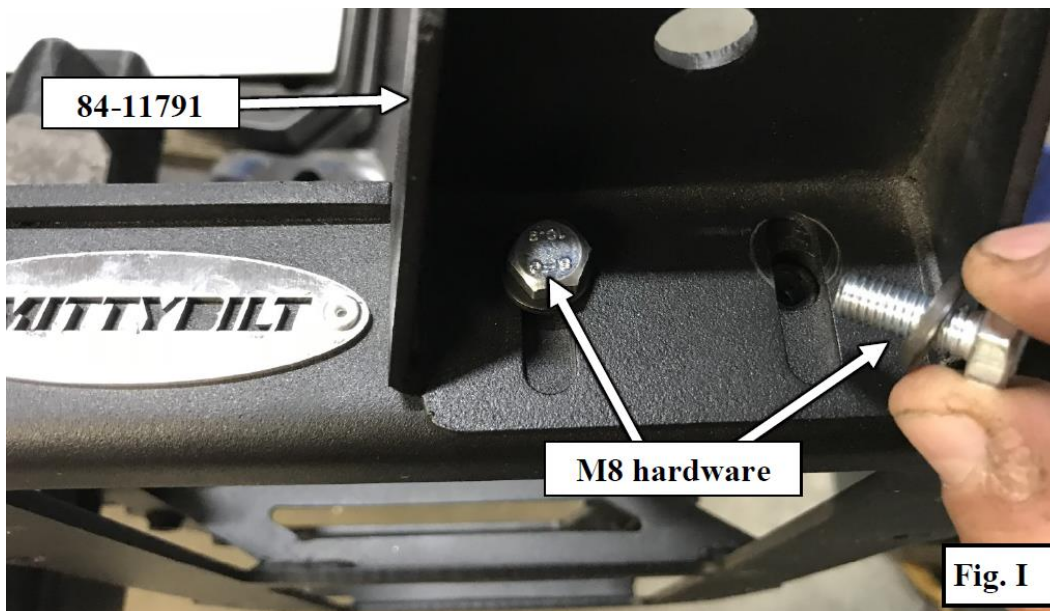
WWW.SMITYBILT.COM

**Installation Instructions
JL Tire Relocation Bracket
2018+ Wrangler JL/JLU
Part #: S/B7721**

Step 6: Insert the push in hole plugs (**7721-02**) into the anti-rattle bumper holes (**Fig. H**). The plugs will snap into place with the outer edge flush to the door when properly installed.



Step 7: Using (2) each M8x25x1.25 bolts, split lock washer, and flat washers, install the anti-rattle bumper wings (**84-11791**) to the tire spacer, finger tight as shown in (**Fig. I**).



For Technical Support/Warranty Information please call 1-800-776-0767
Smittybilt, 400 W. Artesia Blvd Compton, CA 90220



WWW.SMITYBILT.COM

**Installation Instructions
JL Tire Relocation Bracket
2018+ Wrangler JL/JLU
Part #: S/B7721**

Step 8: Install the OE rubber anti-rattle bumpers into the bumper wings by pulling the peg through the hole, while slightly twisting the bumper (**Fig. J**).



Step 9: Using the OE M8 hardware removed in **Step 4**, making sure it is right side up, install the new relocation bracket to the tailgate. Torque the bolts to **18 ft-lbs** (**Fig. K**).



For Technical Support/Warranty Information please call 1-800-776-0767
Smittybilt, 400 W. Artesia Blvd Compton, CA 90220

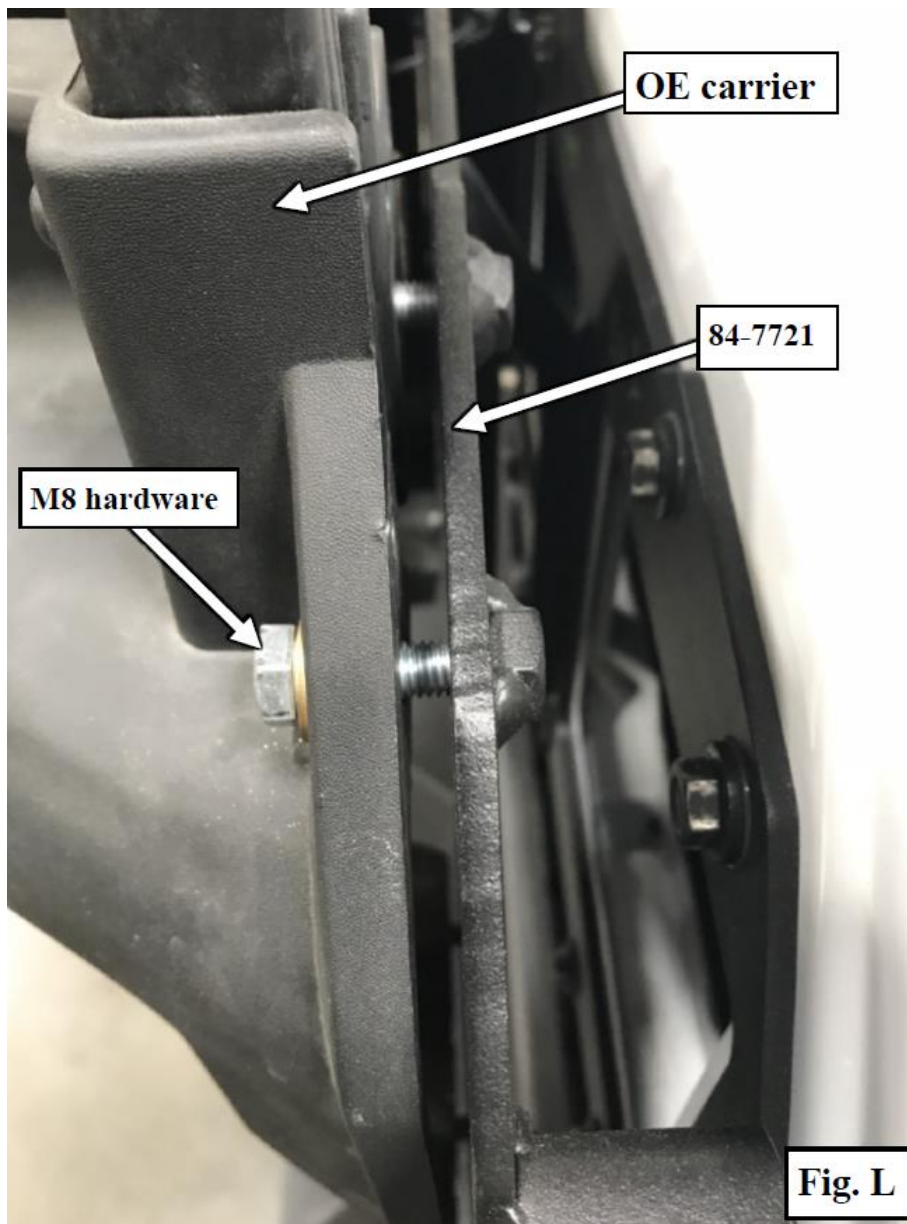


WWW.SMITTYBILT.COM

**Installation Instructions
JL Tire Relocation Bracket
2018+ Wrangler JL/JLU
Part #: S/B7721**

Note : Early versions of this relocation bracket only have one mounting position, later models have two mounting positions allowing for an extra inch of upwards adjustment.

Step 10: Using the provided M8x35x1.25 bolts and washers, loosely attach the **OE** tire carrier to the relocation bracket (**84-7721**) (**Fig. L**).



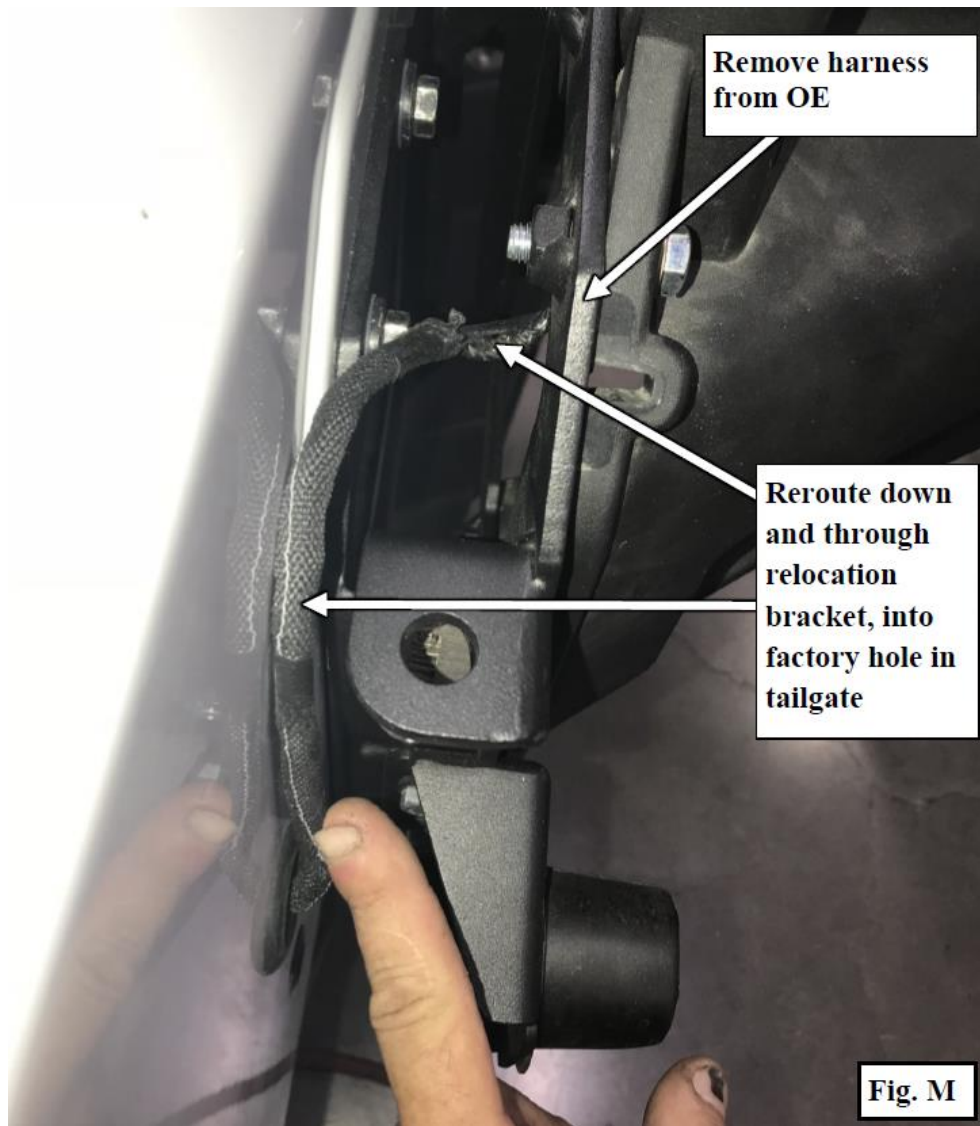
For Technical Support/Warranty Information please call 1-800-776-0767
Smittybilt, 400 W. Artesia Blvd Compton, CA 90220



WWW.SMITTYBILT.COM

**Installation Instructions
JL Tire Relocation Bracket
2018+ Wrangler JL/JLU
Part #: S/B7721**

Step 11: Carefully remove the wiring harness from the OE location on the carrier, route it under and through your new relocation bracket (**Fig M**).



Note : Installing a 37" or larger tire without a reinforcement bracket such as Smittybilt 7743 or Mopar 82215356AB, will void the warranty and eventually seriously damage the OE tailgate.

If your spare tire is 35" or less, proceed to Step 14.

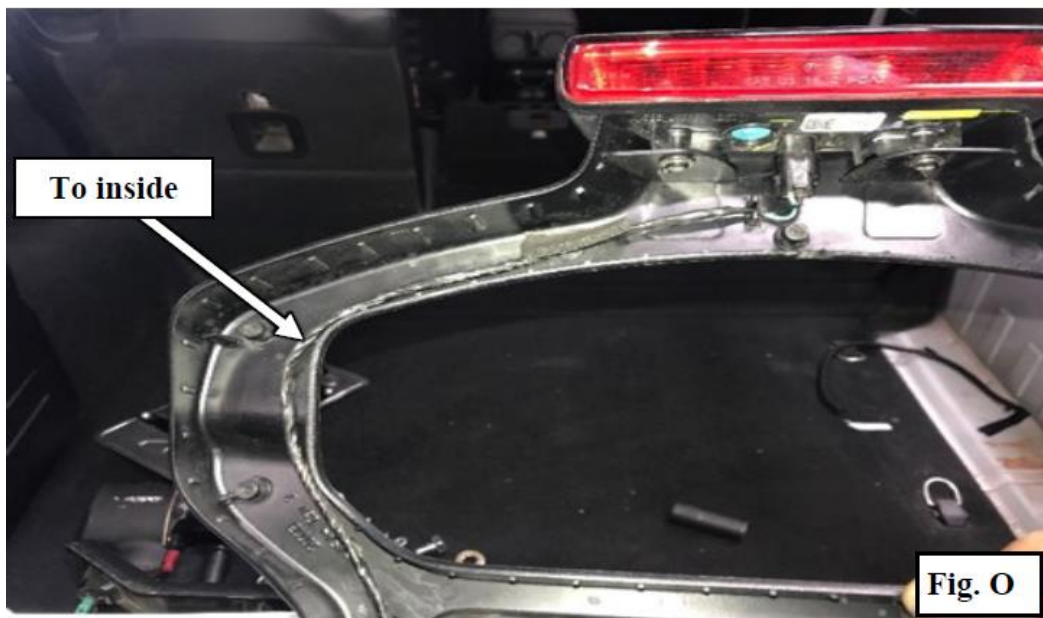
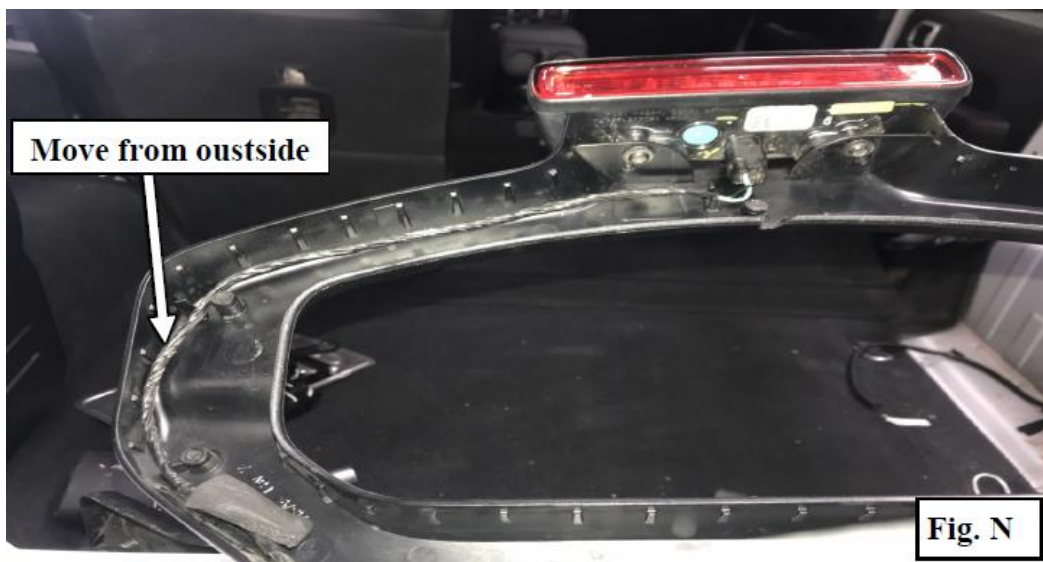
For Technical Support/Warranty Information please call 1-800-776-0767
Smittybilt, 400 W. Artesia Blvd Compton, CA 90220



WWW.SMITTYBILT.COM

**Installation Instructions
JL Tire Relocation Bracket
2018+ Wrangler JL/JLU
Part #: S/B7721**

Step 12: If mounting a tire larger than 35" it will be necessary to raise the 3rd brake light frame up to clear the top of the tire. With a **T25** Torx bit remove the screws on the faceplate of the 3rd brake light frame. Carefully remove the backplate (**Fig N**) and move the wire harness from the outside of the mounting posts to the inside (**Fig O**) and carefully feed the extra length down the support post. Re-install the faceplate and tighten the Torx screws snug or about **12in-lbs**.



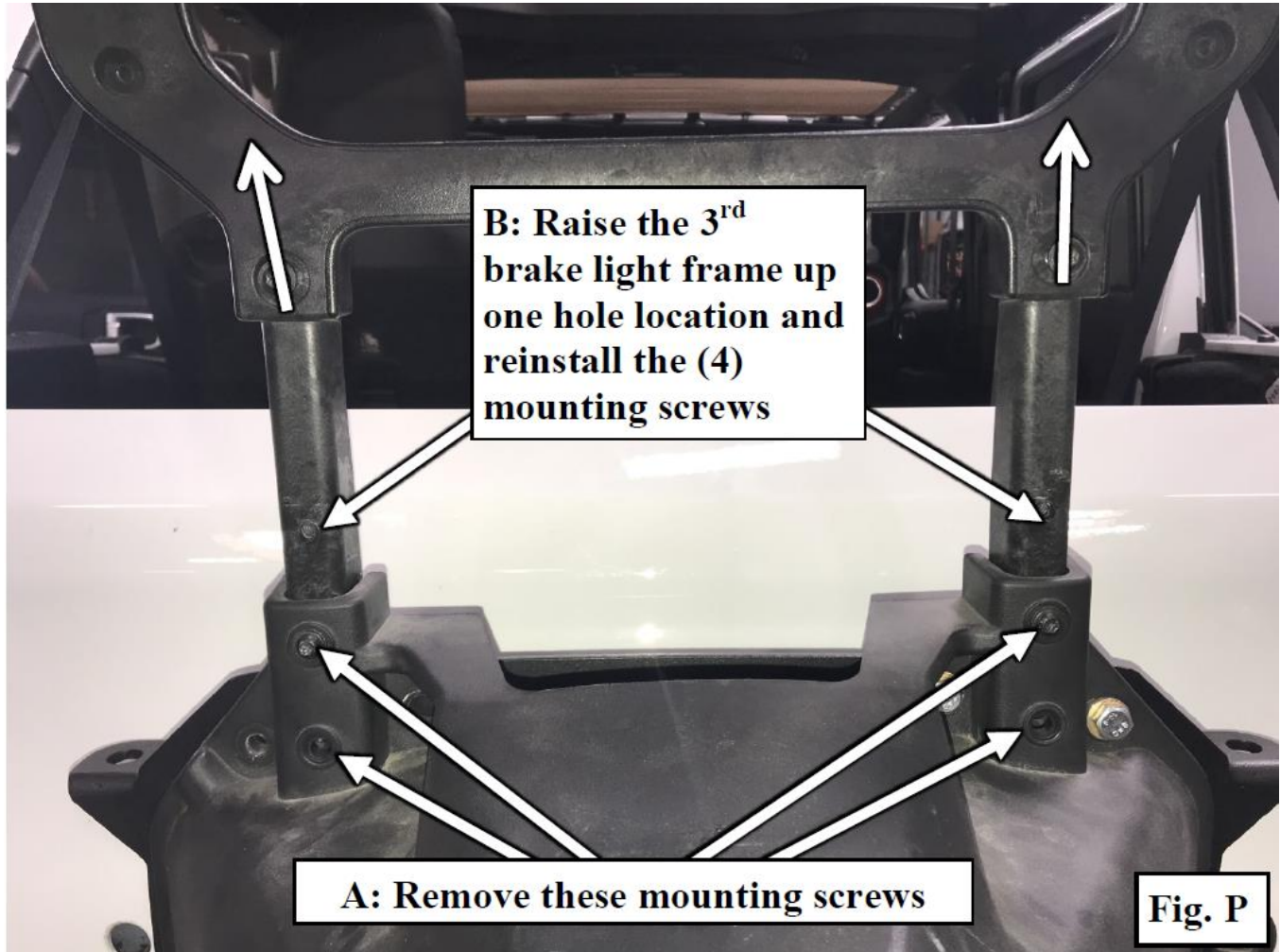
For Technical Support/Warranty Information please call 1-800-776-0767
Smittybilt, 400 W. Artesia Blvd Compton, CA 90220



WWW.SMITTYBILT.COM

**Installation Instructions
JL Tire Relocation Bracket
2018+ Wrangler JL/JLU
Part #: S/B7721**

Step 13: (Step A) Carefully remove the **(4) T25** screws securing the frame posts to the OE tire carrier **(Fig P)**. Raise the frame up to the next hole location and **(Step B)** reinstall the mounting screws. Tighten until snug or about **24in-lbs**.



Step 14: Re-check to make sure wiring harness is safely routed, hand tighten the **(8) Carrier** mounting bolts, then torque them to **24ft-lbs**.

Step 15: Reversing the process in **Steps 2 & 3**, feed the brake light and camera harness through the hole in the tailgate. Re-seat the wiring grommet, reconnect the 3rd brake light and camera to the harness on the inside of the tailgate and re-install the tailgate panel by aligning the tabs and pressing into place.

For Technical Support/Warranty Information please call 1-800-776-0767
Smittybilt, 400 W. Artesia Blvd Compton, CA 90220



WWW.SMITYBILT.COM

**Installation Instructions
JL Tire Relocation Bracket
2018+ Wrangler JL/JLU
Part #: S/B7721**

Step 16: Loosely install the spare tire and adjust the anti-rattle bumpers so that they will make firm contact when the spare tire is fully tightened. **(Fig. Q)** When satisfied with fitment torque the spare tire to **59ft-lbs** and the **M8** bolts to **24ft-lbs**.



NOTE: IF USING AN AFTERMARKET WHEEL WITH A NEGATIVE OFFSET THE FACTORY BUMPSTOP MAY NOT MAKE CONTACT WITH THE TIRE. YOU MUST USE AN EXTENDED BUMPSTOP (SUCH AS DAYKJ09144BK) TO PREVENT DAMAGE TO THE RELOCATION BRACKET.

For Technical Support/Warranty Information please call 1-800-776-0767
Smittybilt, 400 W. Artesia Blvd Compton, CA 90220



WWW.SMITYBILT.COM

**Installation Instructions
JL Tire Relocation Bracket
2018+ Wrangler JL/JLU
Part #: S/B7721**

Step 17: Re-check all hardware, if necessary, torque to specs given on **Page 13** of these instructions (**Fig R & S**). Your install is complete.



Fig. R



Fig. S

Note : Shown with Smittybilt license plate relocation kit 7743, included with XRC and SRC bumpers, also sold separately.

For Technical Support/Warranty Information please call 1-800-776-0767
Smittybilt, 400 W. Artesia Blvd Compton, CA 90220



WWW.SMITTYBILT.COM

**Installation Instructions
 JL Tire Relocation Bracket
 2018+ Wrangler JL/JLU
 Part #: S/B7721**

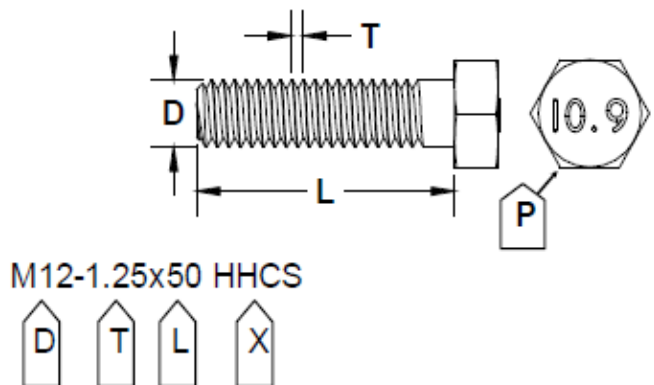
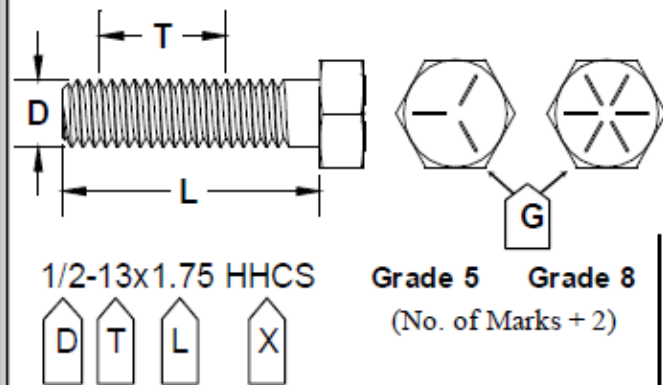
Bolt Torque and ID

Decimal System

Metric System

All Torques in Ft. Lbs.

Bolt Size	Grade 5	Grade 8	Bolt Size	Class 9.8	Class 10.9	Class 12.9
5/16	15	20	M6	5	9	12
3/8	30	45	M8	18	23	27
7/16	45	60	M10	32	45	50
1/2	65	90	M12	55	75	90
9/16	95	130	M14	85	120	145
5/8	135	175	M16	130	165	210
3/4	185	280	M18	170	240	290



G = Grade (Bolt Strength)
 D = Nominal Diameter (Inches)
 T = Thread Count (Threads per Inch)
 L = Length (Inches)
 X = Description (Hex Head Cap Screw)

P = Property Class (Bolt Strength)
 D = Nominal Diameter (Millimeters)
 T = Thread Pitch (Thread Width, mm)
 L = Length (Millimeters)
 X = Description (Hex Head Cap Screw)



WARNING: Cancer and Reproductive Harm -
www.P65Warnings.ca.gov.

Jeep, Wrangler, Rubicon, Renegade, CJ, Quada Trac and the Jeep Grille Design are Registered trademarks of FIAT Chrysler Automotive (FCA)

For Technical Support/Warranty Information please call 1-800-776-0767
 Smittybilt, 400 W. Artesia Blvd Compton, CA 90220



WWW.SMITYBILT.COM

**Installation Instructions
JL Tire Relocation Bracket
2018+ Wrangler JL/JLU
Part #: S/B7721**

Limited Warranties

Limited-Lifetime structural warranty

5-year finish warranty

Smittybilt's products are covered under various limited warranties only. Note that the duration of the limited warranty differs according to the material and finish of the product purchased. **The Smittybilt JL Tire Relocation Bracket carries a limited-lifetime structural warranty and a 5-year finish warranty** from date of purchase. Subject to the duration and conditions of the limited warranty stated below, Smittybilt warrants to the original retail purchaser that its products are free from defects in material and workmanship. Smittybilt shall not be responsible for the natural wear and breakdown of materials that occurs with extended use, such as UV damage or worn zippers, abuse, misuse, storm damage, or improper care. All other warranties and representations express or implied, are hereby disclaimed, including fitness for merchantability and buyer's intended use or purpose. All parts are sold "AS IS" except for the limited warranties granted herein. Buyer assumes all risks as to the selection, suitability and performance of all goods and products selected. This limited warranty does not cover damage or impairment in any part due to misuse, improper installation, accident or contact with on-road or off-road hazards, product modification, improper or inadequate cleaning and/or maintenance. Smittybilt is not responsible for items damaged during shipping. This warranty is not transferable from the original buyer. For the original Buyer to be eligible for the limited warranty coverage, the Buyer must provide proof of purchase.

Customer's remedy hereunder shall be limited only to repair or replacement (at Smittybilt's option) of any defective part(s) returned to Smittybilt at customer's expense. The determination of whether a returned part is defective or subject to coverage under the limited warranties stated herein shall be made at Smittybilt's and/or its representative's sole discretion. Any returns must be made freight pre-paid by consumer.

To assure product quality, Smittybilt reserves the right to change product design, material, specification and finishes without prior notice to customers. This limited warranty gives you specific legal rights and you may also have other rights, which may vary from state to state. Some states do not allow limitations on how long an implied warranty lasts, so the above limitations may not apply as to you. Also, some states do not allow the exclusion or limitation of incidental or consequential damages, so the above limitations or exclusions may not apply to you. Smittybilt reserves the right to discontinue product lines and substitute products or provide other remedies than those listed in this limited warranty for those discontinued products.

Warning

Rollover and other types of vehicle accidents may result in serious injury or death to you, your passengers and others sharing the road. Smittybilt accessories are decorative and are not intended to reduce or avoid injury or damage in the event of an accident. The weight and location of Smittybilt accessories may affect your vehicles' handling, stability and performance, creating an increased risk of accident or rollover. Before installing any accessory, check state laws and assure that the accessory will not obscure any lights or interfere with proper operation of your vehicle's safety equipment. Consult your owner's manual and the Smittybilt instructions, or additional safety information. Smittybilt products, nor the warnings contained herein, are not a substitute for your safe driving. Don't drink and drive, always use seat belts and don't drive faster than conditions permit.

For Technical Support/Warranty Information please call 1-800-776-0767
Smittybilt, 400 W. Artesia Blvd Compton, CA 90220