



WWW.SMITTYBILT.COM

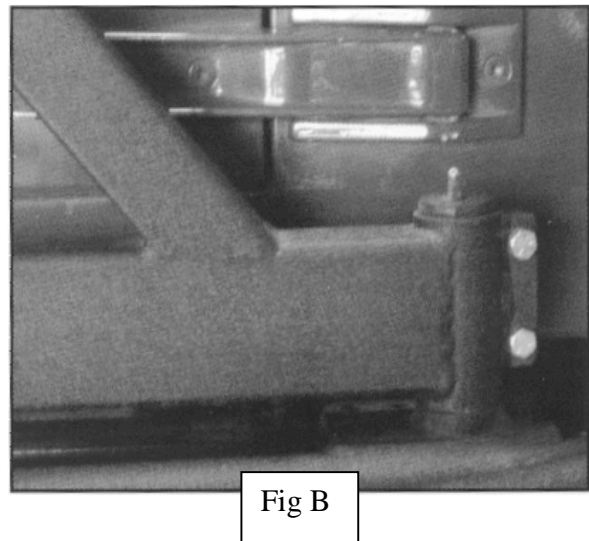
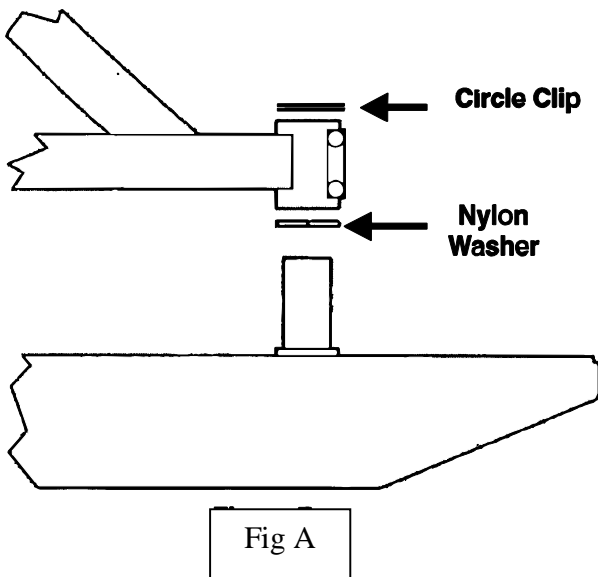
Installation Instructions

Tire Carrier (Part # 76651-02)
1987-2006 Jeep Wrangler

Parts Included	Qty
Tire Carrier	1
Top Post	1
Tire Mount	1
Nylon Ring	1
Circle Clip	1
Rubber Spacer	1
#10 x 1" Sheet Metal Screw	1
12mm X 1.25 Lug Nut	3

Parts Included	Qty
16 x 75mm hex Head Bolt	1
16mm Lock Nut	1
16mm Flat Washer	1
10 x 30mm Hex Head Bolt	2
10 x 35mm Hex Head Bolt	1
10mm Flat Washer	10
10mm Lock Nut	5
10 x 25mm Hex Head Bolt	2

Step 1: Insert nylon washer down over post on bumper. Install tire carrier down post and secure latch. Secure tire carrier to post using (2) 10mm bolts, (4) 10mm flat washers, and (2) lock nuts. Now install the circle clip to the top of the post. (Fig A, B)



Step 2: Insert top post onto top of the tire carrier. Secure with The 16mm bolt, washer, and nut. (Fig C)

For Technical Support/Warranty Information please call 310-762-9944

Smittybilt, 400 West Artesia Blvd, Compton, CA 90220

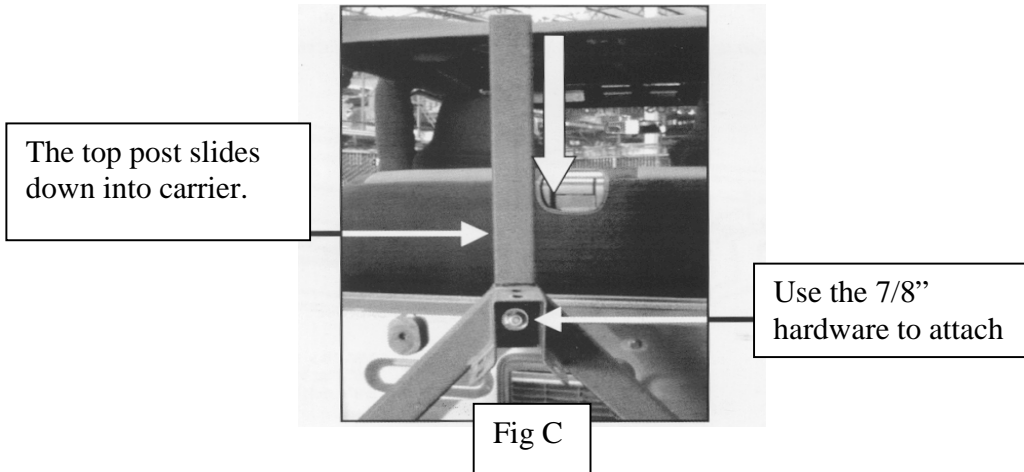


WWW.SMITTYBILT.COM

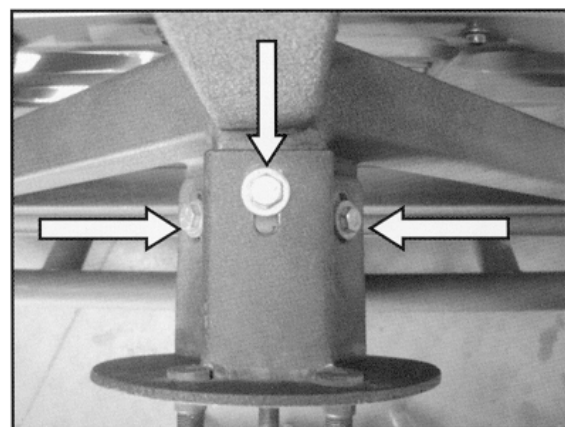
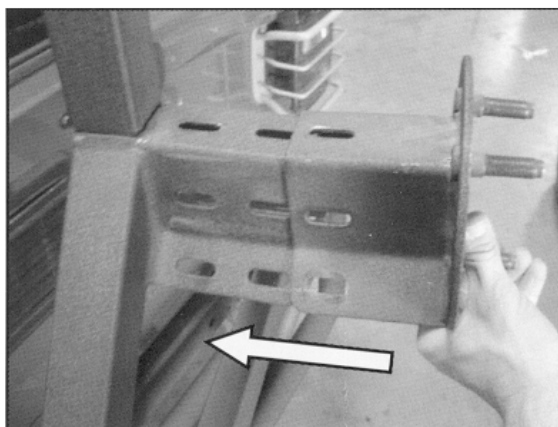
Installation Instructions

Tire Carrier (Part # 76651-02)

1987-2006 Jeep Wrangler



Step 3: Slide tire mount onto tire carrier. (Fig D) Determine the best location for the mount. Your tire should fit flush against the tire carrier and post. Once location is determine use the 10mm hardware to install. (Fig E) The longer (35mm) bolt goes in the top location. If applicable it mounts through the bottom "L" bracket on the top post through the tire mount and carrier. Now install tire on mount and secure with included lug nuts.



For Technical Support/Warranty Information please call 310-762-9944

Smittybilt, 400 West Artesia Blvd, Compton, CA 90220



WWW.SMITTYBILT.COM

Installation Instructions

Tire Carrier (Part # 76651-02)

1987-2006 Jeep Wrangler

Step 4: To help eliminate and reduce any movement of the tire carrier it is recommended to install the included rubber spacer on the back of the tire carrier. Select a good location on the back of the tire carrier so when closed the spacer hits flush against the back of the vehicle. Installation is now complete.

NOTE: To protect your investment, wax this product after installing. Regular waxing is recommended. Do not use any type of polish/wax that contains abrasives that could damage the finish.

LIMITED WARRANTY

Smittybilt (The Company) warrants to the original purchaser of this product that should the product or any part thereof, under normal use and conditions, be proven defective in material or workmanship within the warranty period of 5 years from the date of purchase, such defect(s) will be repaired or replaced (At the Company's option) without charge for parts or labor. To obtain repair or replacement within the terms of the warranty, the product is to be delivered with proof of warranty coverage (e.g. dated bill of sale, receipt), specification of defect, freight pre-paid with Returns Good Authorization Number from Smittybilt to place of purchase or to Smittybilt. Items returned to Smittybilt Automotive without an Returns Authorization Number will be refused and returned to sender at the senders expense.

This warranty does not apply to any product or part thereof which, in the opinion of the Company, has suffered or been damaged through altercation, improper installation, mishandling, misuse, neglect accident or acts of nature. **THE EXTENT OF THE COMPANY'S LIABILITY UNDER THIS WARRANTY IS LIMITED TO THE REPAIR OR REPLACEMENT PROVIDED ABOVE AND, IN NO EVENT, SHALL THE COMPANY'S LIABILITY EXCEED THE PURCHASE PRICE PAID BY THE PURCHASER FOR THIS PRODUCT.**

This warranty is in lieu of all expressed warranties and liabilities. ANY IMPLIED WARRANTIES, INCLUDING ANY IMPLIED WARRANTY OF MERCHANTABILITY SHALL BE LIMITED TO THE DURATION OF THIS WRITTEN WARRANTY. ANY ACTION FOR BREACH OF ANY WARRANTY HEREUNDER INCLUDING ANY IMPLIED WARRANTY OF MERCHANTABILITY MUST BE BROUGHT WITHIN A PERIOD OF 90 DAYS FROM DATE OF ORIGINAL PURCHASE. IN NO CASE SHALL THE COMPANY BE LIABLE FOR ANY CONSEQUENTIAL OR INCIDENTAL DAMAGES FOR BREACH OF THIS OR ANY OTHER WARRANTY, EXPRESSED OR IMPLIED, WHATSOEVER. No person or representative is authorized to assume for the company any liability other than expressed herein in connection with the sale of this product. Some states do not allow limitations on how long an implied warranty lasts or the exclusion or limitation of incidental or consequential damage, therefore above limitations may not apply to you. This warranty gives the purchaser specific legal rights. The purchaser may have additional rights, which vary from state to state.

Some states do not allow limitations on how long an implied warranty lasts or the exclusion or limitation of incidental or consequential damage, therefore above limitations may not apply to you. This warranty gives the purchaser specific legal rights. The purchaser may have additional rights, which vary from state to state.

For Technical Support/Warranty Information please call 310-762-9944

Smittybilt, 400 West Artesia Blvd, Compton, CA 90220