



Installation Instructions

H.E.M.I. Hood

Part# 76500

07-18 JK

NOTE: Carefully read entire instructions thoroughly before attempting to install this part. Photos are for illustration purposes and actual product may vary. Install remains the same

NOTE: Pre-fit prior to painting the hood. Fitment issues will only be covered by warranty on an unpainted hood.

Inspect hood for any damages before accepting shipment. If damage is found you must file a shipping claim with the shipping company.

It is recommended to have this part installed by a professional body shop. Body work and paint knowledge is required for install.



For Technical Support/Warranty Information please call 310-762-9944
Smittybilt, 400 W. Artesia Blvd Compton, CA 90220



Installation Instructions

H.E.M.I. Hood

Part# 76500

07-18 JK

Contents:

- HEMI hood
- Insulator 3 pieces
- Hood vent (L+R)
- Windshield washer nozzle (2)
- Fluid hose
- T-connector
- Zip tie panel clip (3)

****DO NOT** install hood vents during test fit. Removal of hood vents may damage adhesive tape. **** You may purchase replacement hood vents part#76500-01 ****

NOTE: Pre-fit hood prior to painting the hood.

Section 1: Remove factory hood

Step 1: Park vehicle on level surface , set parking brake, and disconnect battery.

Step 2: Remove the grounding wire that attaches to the rear of the hood. (this is only for model years 2013+)

Step 3: Disconnect the main feed window washer fluid tube at the Y connector(for 2013+) or at the nozzle(07-12). Fig 1

Step 4: Remove hood catch, latch, spring, footman loop, under hood light (if equipped) from factory hood. Fig 2-4

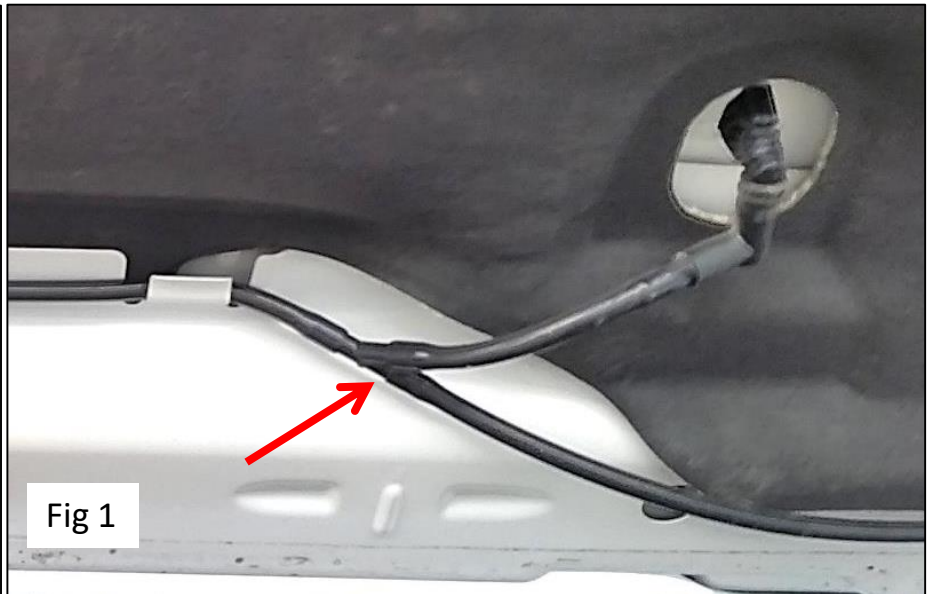


Fig 1

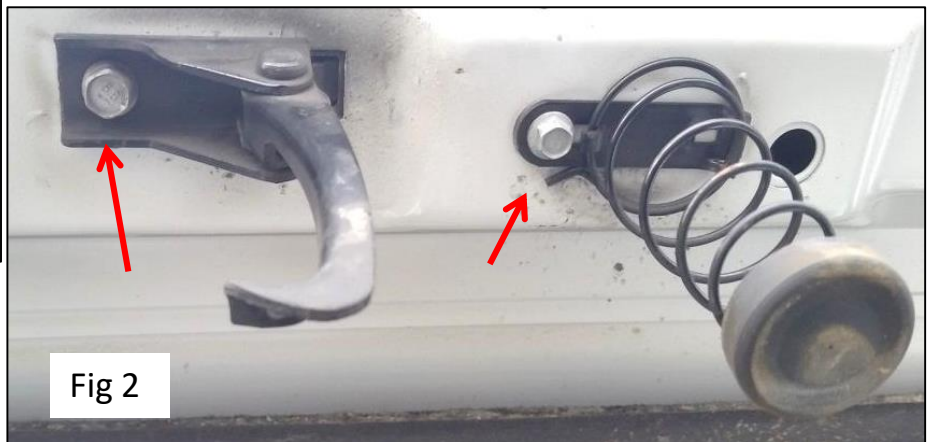


Fig 2



Fig 4



Installation Instructions
H.E.M.I. Hood
Part# 76500
07-18 JK

Step 4: Remove windshield wiper arms then remove the cowl cover attachment screws and remove cowl. Fig 5

Step 5: Remove the (4) hex bots that attach hood hinge to the cowl. Fig 6 Then remove the hood hinges from factory hood (T-50 torx bit) You can now remove the hood from the vehicle.

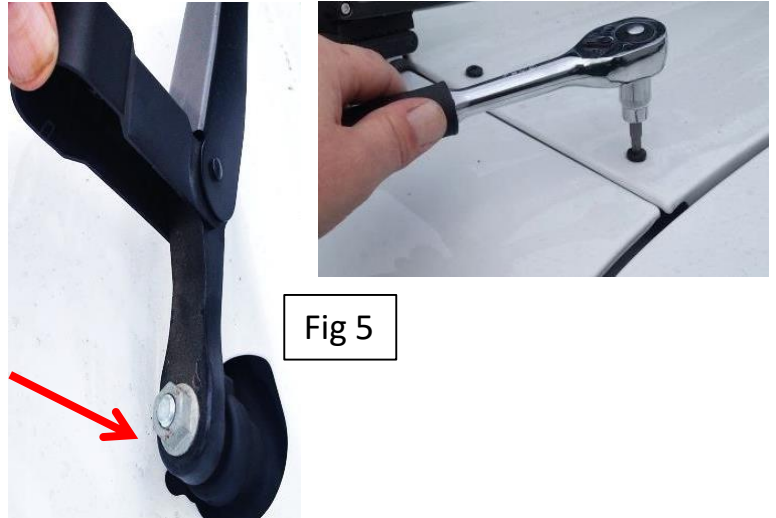


Fig 5

Section 2: Pre-install hood

Step 6: Loosely install factory hood hinges onto hood using factory hardware. Leave bolts loose so that the hinge position can be adjusted. Hood uses a floating nut plate to allow for hood alignment. Fig 7.

Step 7: Install hood on to vehicle by securing the hood hinges to the cowl. Fig 6. You may tighten these bolts completely but may need to be loosened to help with alignment. Check fender to hood and hood to cowl alignment. Once hood is aligned, tighten the hood hinge Torx bolts. You may also need to loosen the front fenders to help with alignment.

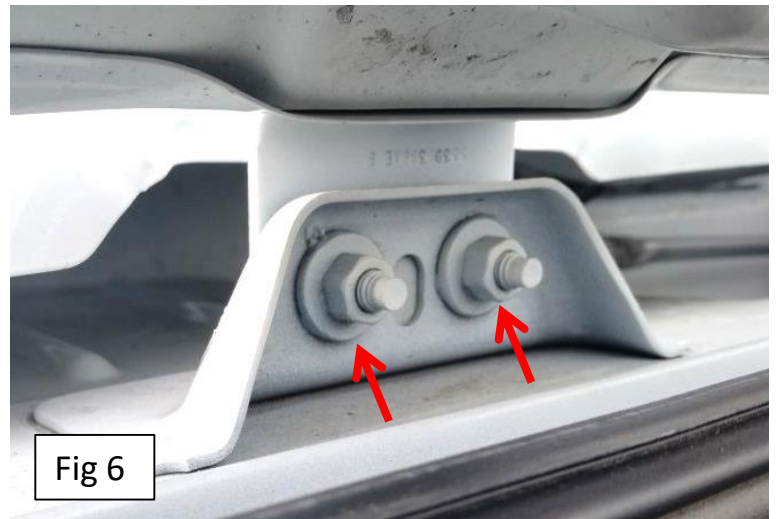


Fig 6



Fig 7



Installation Instructions

H.E.M.I. Hood

Part# 76500

07-18 JK

Section 3: Painting

Step 9: Remove hood from vehicle by unbolting the hood hinge from the cowl. Leave hinges installed on hood for painting. You may remove hood hinges but will have to re-align hood and may damage newly painted hood upon final install. Painting under the hood hinges is good practice for preventing any corrosion or rust.

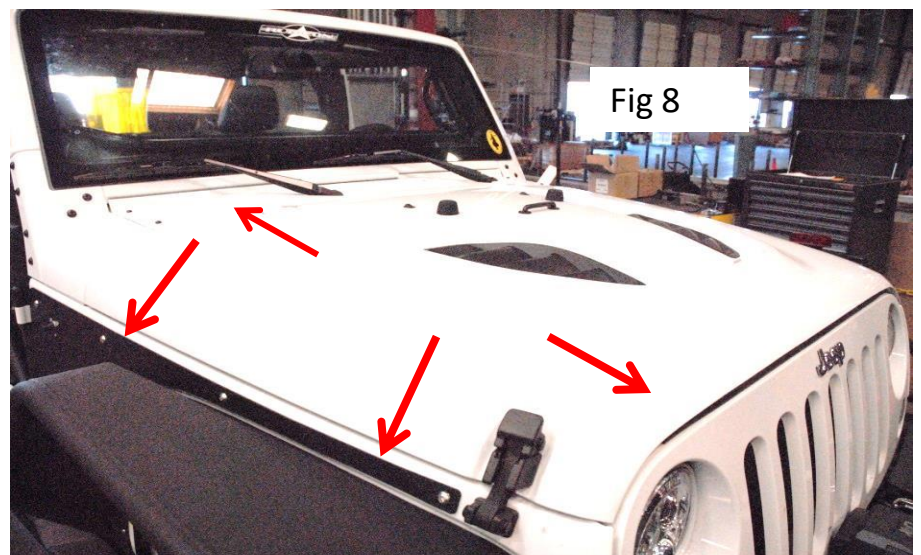
Step 10: The hood is E-coated as a primer to prevent rust during shipping and storage. It is not designed to be a final finish and is not UV stable. Entire hood inside and out must be prepped, sealed, primed, sanded, painted, and clear coated. Prep, scuff, and wash per normal auto body finishing standards. Consult a local auto body professional for painting and paint requirements. Remember 90% of a good paint job relies on the prep.

Section 4: Install hood.

Step 11: Replace all hood components onto Stingray hood. You will not use the factory hood insulation. Install washer nozzles and hook up supplied fluid lines to nozzles and factory feed line. Fig 8a

Step 12: Place hood on vehicle, loosely install the hinge to cowl bolts and carefully latch down hood. Check around all gaps for a uniform fit, adjust if necessary. You should not have to adjust the hinge to hood bolts if hood was pre-installed and aligned correctly. Fig 8.

NOTE: Some aftermarket hood latches may not be compatible with the HEMI hood.





Installation Instructions

H.E.M.I. Hood
Part# 76500
07-18 JK

Step 13: If necessary, adjust the hood to cowl curvature. This can be done by adjusting and tightening the two adjustment screws that attach cowl corners to cowl. The cowl corners can be adjusted by sliding them in or out to adjust fit and curvature. Fig 9 arrows point to the adjustment bolt locations.

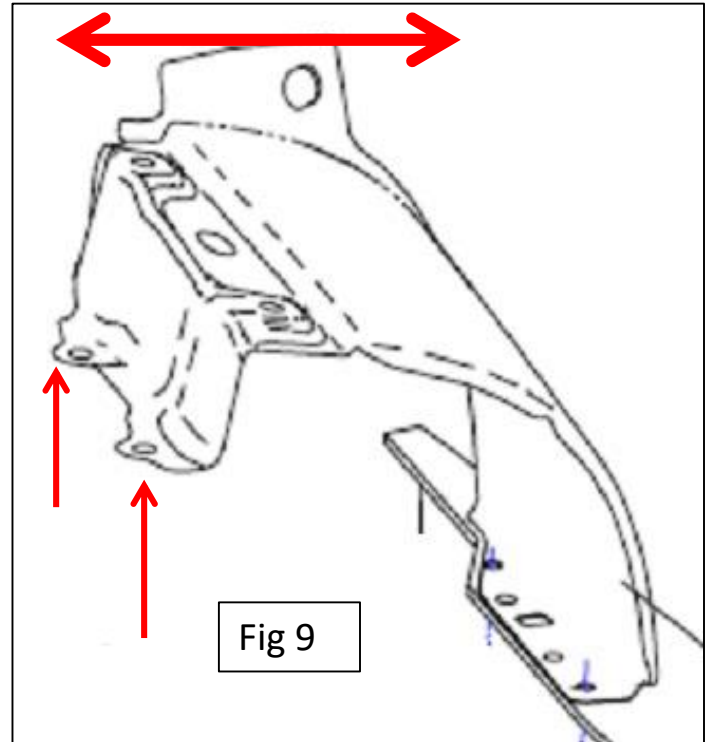
Step 14: Re-install cowl cover and wiper arms..

Step 15: Reattach ground wire if equipped. Trim insulations if needed.

Step 16: Install vents by first removing the red film from the double sided tape. Install vents onto hood by pressing them in place. Use rubbing alcohol to clean surface before attaching. **Removal of hood vents after first install may damage adhesive tape. DO NOT remove and re-install hood vents. **
Fig 10

Step 17: Install insulation onto hood. Secure by removing the backing and pressing the adhesive side against the hood. Fig 11. The zip tie panel clips will go to the holes closest to the washer nozzle to secure the hose. Ensure insulation does not block any intake ports. Trim if necessary.

Step 18: Periodically check all fasteners for proper torque.





WWW.SMITYBILT.COM

Installation Instructions

H.E.M.I. Hood

Part# 76500

07-18 JK





WWW.SMITYBILT.COM

Installation Instructions

H.E.M.I. Hood

Part# 76500

07-18 JK

Limited Warranties

Smittybilt's products are covered under the following limited 1 year warranties only. Note that the duration of the limited warranty differs according to the material and finish of the product purchased. Subject to the 1 year duration and conditions of the limited warranty stated below, Smittybilt warrants to the original retail purchaser that its products are free from defects in material and workmanship. All other warranties and representations express or implied, are hereby disclaimed, including fitness for merchantability and buyer's intended use or purpose. All parts are sold "AS IS" except for the limited warranties granted herein. Buyer assumes all risks as to the selection, suitability and performance of all goods and products selected. This limited warranty does not cover damage or impairment in any part due to misuse, improper installation, accident or contact with on-road or off-road hazards, product modification, improper or inadequate cleaning and/or maintenance. Smittybilt is not responsible for items damaged during shipping. This warranty is not transferable from the original buyer. For the original Buyer to be eligible for the limited warranty coverage, the Buyer must provide proof of purchase. Smittybilt strongly recommends returning the warranty registration card.

Customer's remedy hereunder shall be limited only to repair or replacement (at Smittybilt's option) of any defective part(s) returned to Smittybilt at customer's expense. The determination of whether or not a returned part is defective or subject to coverage under the limited warranties stated herein shall be made at Smittybilt's sole discretion.

To assure product quality, Smittybilt reserves the right to change product design, material, specification and finishes without prior notice to customers. This limited warranty gives you specific legal rights and you may also have other rights, which may vary from state to state. Some states do not allow limitations on how long an implied warranty lasts, so the above limitations may not apply as to you. Also, some states do not allow the exclusion or limitation of incidental or consequential damages, so the above limitations or exclusions may not apply to you. Smittybilt reserves the right to discontinue product lines and substitute products, or provide other remedies than those listed in this limited warranty for those discontinued products.

Warning

Rollover and other types of vehicle accidents may result in serious injury or death to you, your passengers and others sharing the road. Smittybilt accessories are decorative and are not intended to reduce or avoid injury or damage in the event of an accident. The weight and location of Smittybilt accessories may affect your vehicles' handling, stability and performance, creating an increased risk of accident or rollover. Before installing any accessory, check state laws and assure that the accessory will not obscure any lights or interfere with proper operation on your vehicle's safety equipment. Consult your owner's manual and the Smittybilt instructions, or additional safety information. Smittybilt products, nor the warnings contained herein, are not a substitute for your safe driving. Don't drink and drive, always use seat belts and don't drive faster than conditions permit.



WARNING: Cancer and Reproductive Harm -
www.P65Warnings.ca.gov.

***Jeep® and Wrangler® are
registered trademarks of
Chrysler***