

Installation Instructions



Toyota Tacoma Swing Gates
Part # S/B61449DW-PW



For Technical Support / Warranty Information please call 800-776-0767 EXT 1317
or Email at info@smittybilt.com

Introduction

Thank you for choosing Smittybilt accessories for your Toyota Tacoma. If you would like to view our full range of available accessories, please visit us at www.smittybilt.com



Toyota® and Tacoma® are registered trademarks of Toyota Motor Corporation.

Important Notes Before Starting

IMPORTANT NOTE

Carefully read through this entire instruction manual thoroughly before attempting to install this part.

The following tools will be required to complete the installation of this part:

TOOLS REQUIRED	
10, 17, 19mm Wrench	4mm Hex Bit Socket
10, 12, 13, 17, 19mm Socket	Ratcheting Wrench
5mm Hex Bit Socket	Torque Wrench
1-1/4" Socket	T40 Torx Bit Socket

WARNING

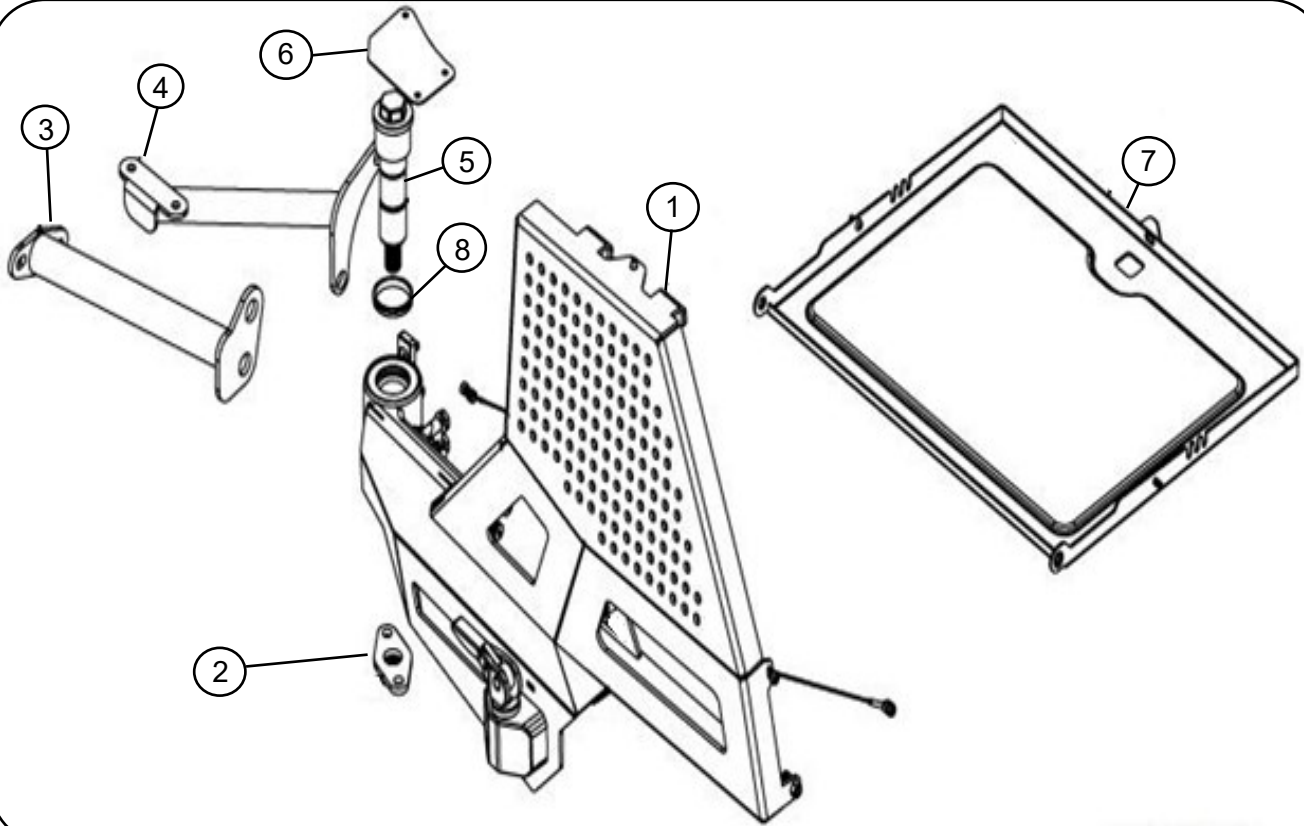
Serious injury can occur when working on vehicles alone.

When possible, work with another person to reduce risk of injury from strain or other dangers that can occur when working alone.



For Technical Support / Warranty Information please call 800-776-0767 EXT 1317
or Email at info@smittybilt.com

Box Contents



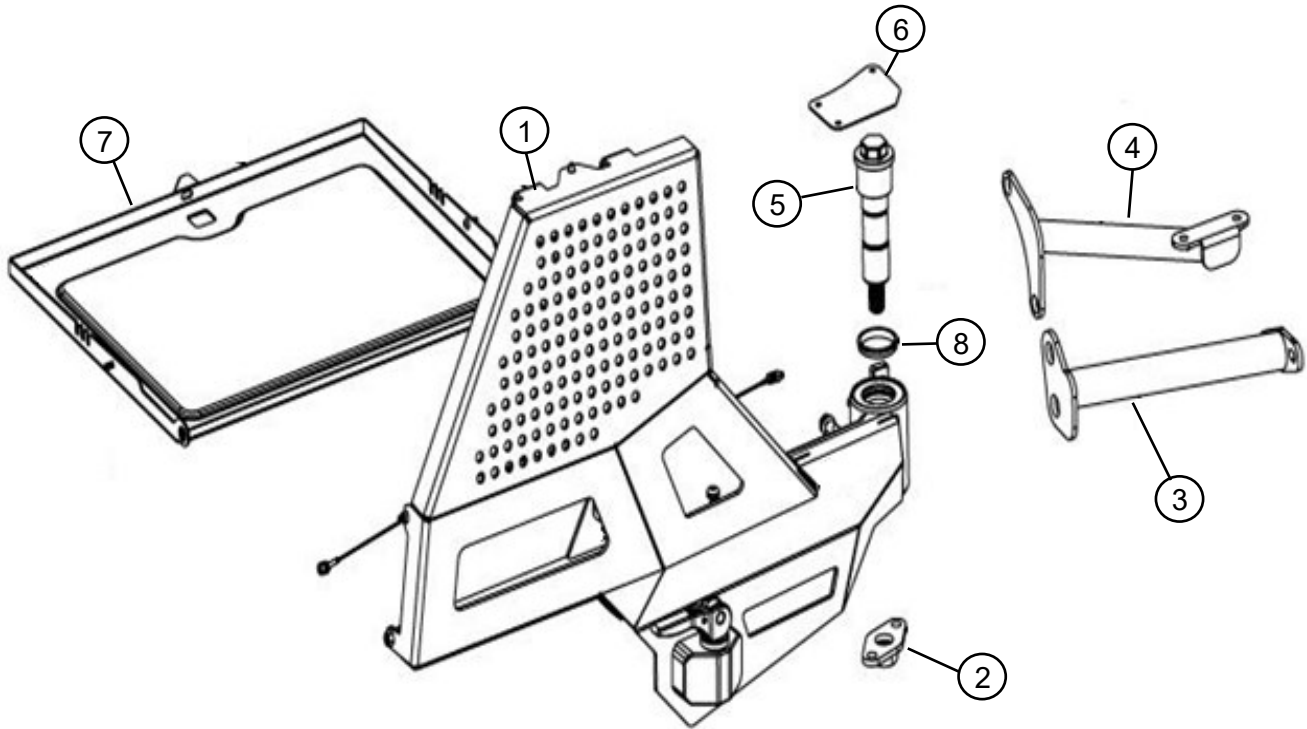
SB61449DW BOX CONTENTS

ITEM NO.	PART NO.	DESCRIPTION	QTY
1	1040AASG100	SWING GATE ASSEMBLY - DRIVER	1
2	1040AASG200	M20X2.5 NUTPLATE	1
3	1040AASG300	FRAME SECONDARY BRACKET - DRIVER	1
4	1040AASG400	FRAME TERTIARY BRACKET - DRIVER	1
5	1040AASG800	SWING GATE PIN	1
6	1040AASG1600	HINGE COVER PLATE	1
7	1040AASG1700	OVERLAND TABLE	1
8	1040AASG2000	BRASS PRESS-IN BUSHING	1



For Technical Support / Warranty Information please call 800-776-0767 EXT 1317
or Email at info@smittybilt.com

Box Contents



SB61449PW BOX CONTENTS

ITEM NO.	PART NO.	DESCRIPTION	QTY
1	1040AASG100-M	SWING GATE ASSEMBLY - PASSENGER	1
2	1040AASG200-M	M20X2.5 NUTPLATE	1
3	1040AASG300-M	FRAME SECONDARY BRACKET - PASSENGER	1
4	1040AASG400-M	FRAME TERTIARY BRACKET - PASSENGER	1
5	1040AASG800	SWING GATE PIN	1
6	1040AASG1600	HINGE COVER PLATE	1
7	1040AASG1700	OVERLAND TABLE	1
8	1040AASG2000	BRASS PRESS-IN BUSHING	1



For Technical Support / Warranty Information please call 800-776-0767 EXT 1317
or Email at info@smittybilt.com

Hardware Packs

QTY	PART NO.	DESCRIPTION
1	SB61449DW-01	FRAME MOUNTS HARDWARE
2	90304A132	M8X1.25X20 TORX HEAD SCREW GR10.9 CZ
2	91166A270	M8 FLAT WASHER CZ
2	90854A192	M10X1.5X30 HHCS GR10.9 CZ
2	91166A280	M10 FLAT WSHR GR8.8 CZ
1	SB61449DW-02	SWING GATE DRIVER HINGE HARDWARE
1	96-1040AASG700	HINGE LOCK ASSEMBLY
2	91166A280	M10 FLAT WSHR GR8.8 CZ
2	91310A620	M10X1.5X16 HHCS GR10.9 CZ
1	96-1040AASG1400	SWING GATE HARDSTOP PAD
2	1040AASG2700	M8X1.25X25 FHCS GR10.9 CZ
2	92133A112	10 MM STEEL PUSH ON EXTERNAL RETAINING RING
1	SB61449DW-03	SWING GATE DRIVER CAM OVER HARDWARE
1	96-1040AASG1300	DELFIN CAM PAD
1	96-1040AASG500	CAM OVER HANDLE
1	91585A337	2MM DIAM 26 MM LENGTH SS DOWEL PIN
1	35-1040AASG1000	DOVETAIL RECEIVER
2	1040AASG2800	M8X1.25X30 FHCS GR10.9 CZ
1	84-1040AA1500	STOVER NUT PLATE
4	1040AASG4000	M6X1X15 FHCS GR10.9 CZ
2	60-1040AASG3600	ALU WEAR PAD - BUMPER SIDE
1	35-1040AASG1100	DOVETAIL MOVING CLAMP
1	1040AASG3100	THREADLOCKER MEDIUM STRENGTH 6ML TUBE
1	SB61449DW-04	SWING GATE OVLND TABLE
2	90576A117	M8X1.25 NYLOCK GR8.8 CZ
2	90265A158	M8X1.25X8MM SS SHOULDER SCREW 10MM DIA
2	90-1040AASG1900	10 IN. CABLE ASSEMBLY
1	1040AASG3800	M8X1.25 SPRING PLUNGER W/ RING + THREADLOCKER CZ
2	90-1040AASG2400	OVERLAND TABLE FOAM COMPRESSION PAD
4	94645A205	M6X1 NYLOCK GR10.9 CZ
2	91166A250	M6 FLAT WASHER CZ



For Technical Support / Warranty Information please call 800-776-0767 EXT 1317
or Email at info@smittybilt.com

Installation Instructions



WARNING

Chock all four wheels and make sure parking brake is engaged before starting this install. Failure to do so could result in serious injury.



IMPORTANT NOTE

Carefully read through this entire instruction manual thoroughly before attempting to install this part. For installation of your Swing Gate use SB61448 Tacoma Rear Bumper instructions for bumper removal and re-installation. Use masking tape to protect painted surfaces. Smittybilt Swing Gates are not compatible with the Toyota Blind Spot Monitoring system.

Check Box Contents

Open the box containing your Toyota Tacoma Swing Gates , check all parts against the Bill of Materials outlined in the first pages of these instructions.

If anything is missing, contact Smittybilt Technical Support immediately.



Disconnect Vehicle Battery

Remove both terminals from the battery to protect sensors and wire harness during install.



IMPORTANT NOTE

Failure to disconnect battery prior to sensor disconnect can lead to sensor failure and/or may require re-calibration at vehicle dealership.

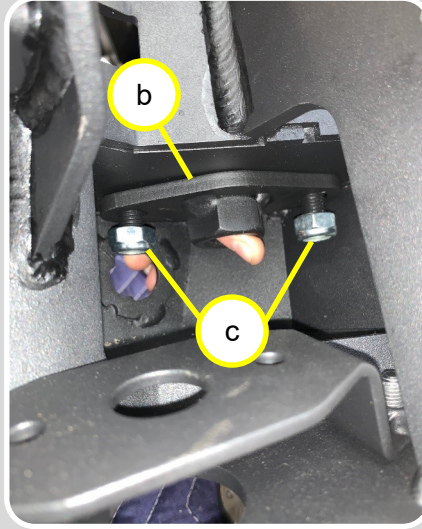
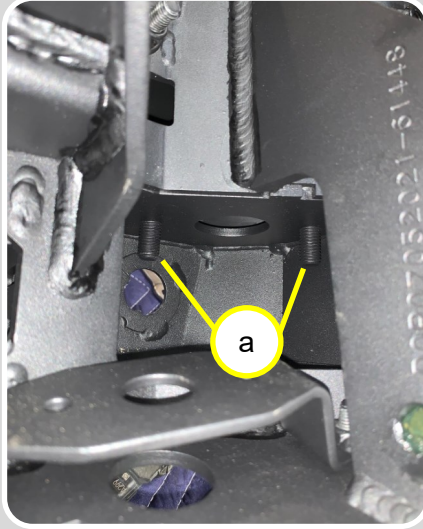
Step 1: Remove Tacoma Rear Bumper (if installed)

If SmittyBilt Tacoma Rear Bumper is installed on vehicle, remove and place on a working surface. Refer to **SB61448 Tacoma Rear Bumper Instructions** for removal.



For Technical Support / Warranty Information please call 800-776-0767 EXT 1317
or Email at info@smittybilt.com

Installation Instructions



Step 2: Install M20 Nut Plate

Locate PN: 1040AASG200 (M20x2.5 nut plate) and 2X M10 low profile nylocks (from hardware pack SB61449DW-02). It is recommended to remove 2X outer most parking sensors for ease of install.

From inside the bumper, locate the 2 provided M10 threaded studs in the corner pocket of the bumper (a). Fish the M20 nut plate into place (b) and install the 2X M10 low profile nylocks (c). The nut plate can be held through the hole on top of the bumper.

Use a 17mm wrench to tighten both nuts. Tighten until contact with nut plate then back off the nut 1 turn, nut plate must be able to move on threaded rods.

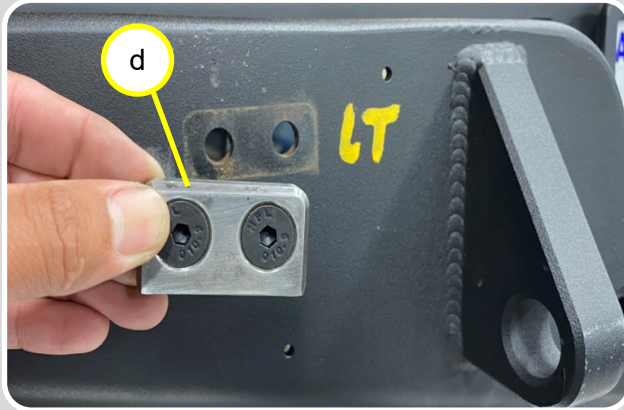
! IMPORTANT NOTE

Intention of nylocks are to hold nut plate in place during install, since door install must be completed while bumper is on vehicle. Torque of these nuts is not critical.



For Technical Support / Warranty Information please call 800-776-0767 EXT 1317
or Email at info@smittybilt.com

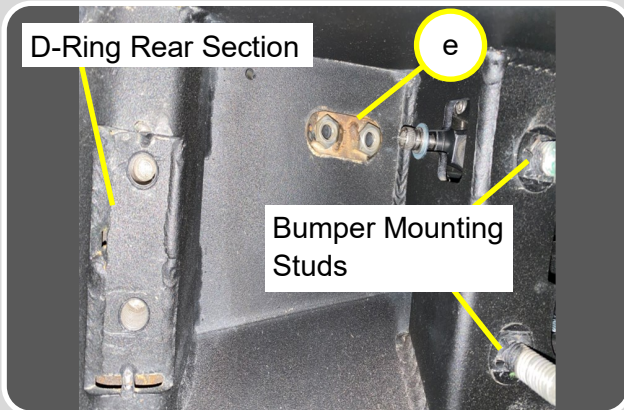
Installation Instructions



Step 3: Install Dovetail Receiver to Bumper

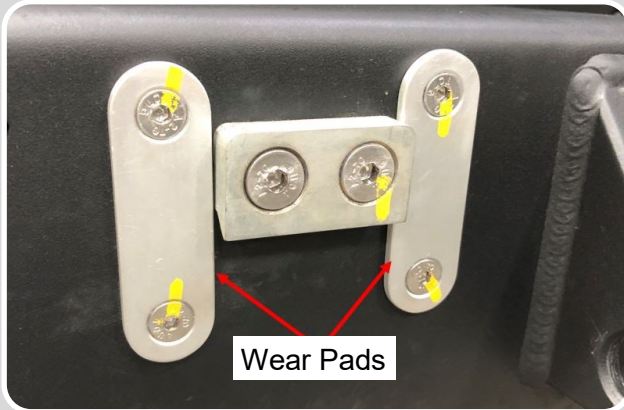
Working at the Tacoma rear bumper driver side, front section. Locate Hardware Pack **SB61449DW-03** and use **Dovetail Receiver, 2X M8(1.25)x30mm FHCS Screws** and **PN: 1040AA1500 (Stover Nut Plate)**.

Locate the two holes between light bar and D-ring and secure Dovetail Receiver to bumper, grooves facing down, (*d*) using M8 nut plate (*e*) from the back.



Now install one wear pad (**PN 60-1040AASG3600**) on either side of the Dovetail Receiver (*bottom image*). Apply medium strength thread locker to the supplied M6 Flat head screws and torque to spec.

Use a **Hex Bit Socket** and loosely tighten to allow for adjustment in a later step.



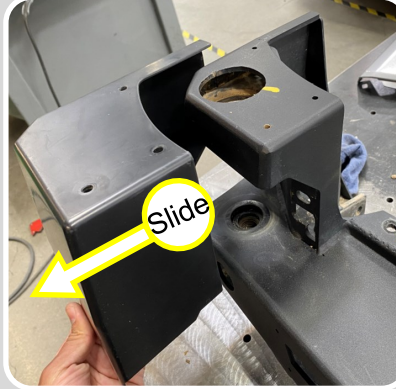
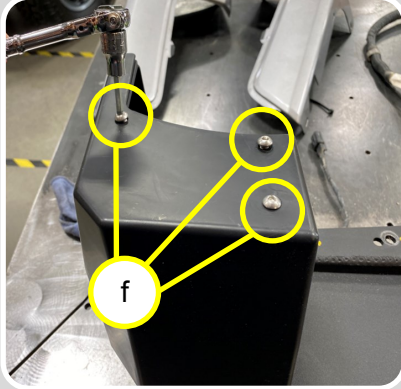
! IMPORTANT NOTE

Refer to page 16 for Torque Specifications.



For Technical Support / Warranty Information please call 800-776-0767 EXT 1317
or Email at info@smittybilt.com

Installation Instructions



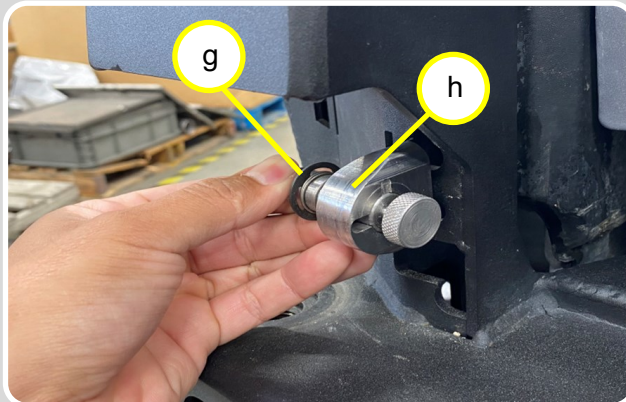
Step 4: Remove Plastic Corner Covers

From the Tacoma rear bumper, remove 3X Button Head Hex drive screws from top of the plastic corner cover (*f*) using a **4mm Hex Bit Socket**, and slide the plastic corner cover off the bumper.

If your Smittybilt bumper is equipped with Blind Spot sensors, the sensors and brackets will have to be removed.

! IMPORTANT NOTE

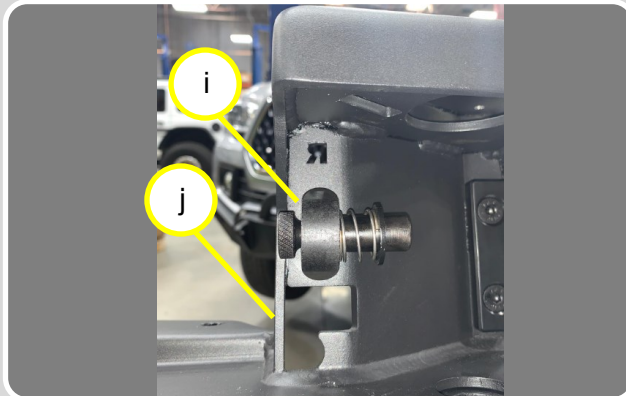
Save Hardware for re-installation at Step 14.



Step 5: Install Hinge Lock Assembly

Locate PN: SB61449DW-02 (Swing Gate Driver Hinge Hardware) and from it use PN: 1040AASG700 (Hinge Lock Assembly), 2X M10 Flat Washers and 2X M10(1.5) x16mm Hex Screws.

Use a **17mm Socket** to secure the hinge lock (*h*) to the bumper, with the hinge lock pin facing out toward the outside corner of bumper (*g*).



! IMPORTANT NOTE

Refer to page 16 for Torque Specifications.

During install, ensure edge of hinge lock (*i*) is parallel with bumper wall (*j*), failure to align properly leads to misalignment of hinge lock. Bumper will need to be removed from vehicle and realigned.



For Technical Support / Warranty Information please call 800-776-0767 EXT 1317
or Email at info@smittybilt.com

Installation Instructions



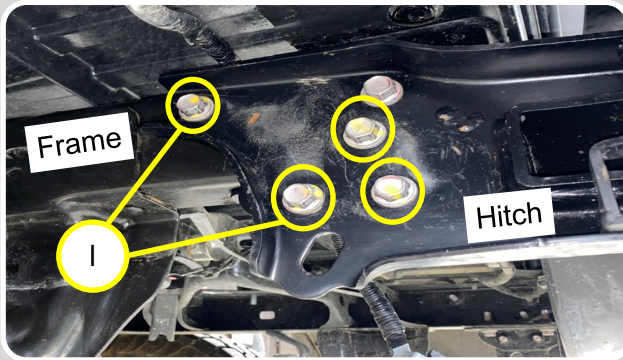
Step 6: Install Swing Gate Hard Stop

Working at the rear bumper driver side corner pocket, locate PN: SB61449DW-02 (Swing Gate Driver Hinge Hardware Pack) and use PN: 1040AASG1400 (Swing Gate Hard Stop Pad) (*k*) and 2X M8(1.25)x25mm Flat Head Screws.

Secure the Swing Gate Hard Stop to bumper swing gate corner pocket using a **5mm Hex Bit Socket**.

Step 7: Re-install Rear Bumper

Re-install rear bumper using SB61448 Tacoma Rear Bumper instructions.



Step 8: Remove 4X M12 Bolts

Working at the rear frame driver corner section Using a **17mm Socket**, remove **4X M12 bolts** (*l*) securing the outside corner section of the hitch receiver to the frame.

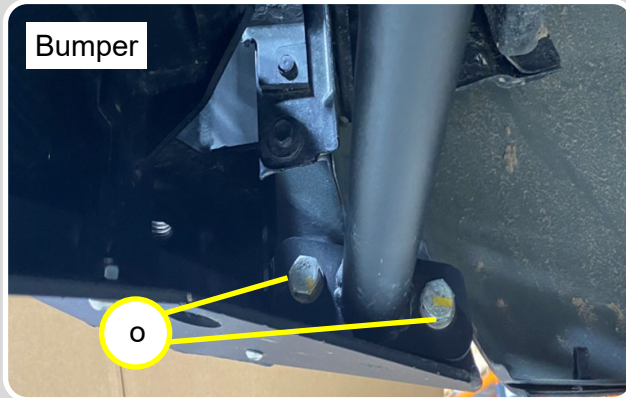
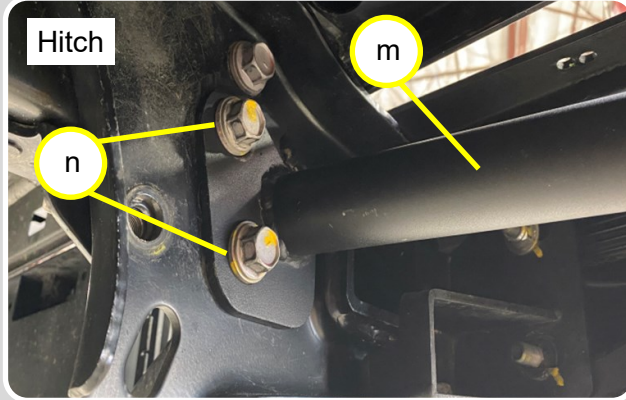
! IMPORTANT NOTE

Set bolts aside for re-use later.



For Technical Support / Warranty Information please call 800-776-0767 EXT 1317
or Email at info@smittybilt.com

Installation Instructions



Step 9: Install Frame Secondary Bracket

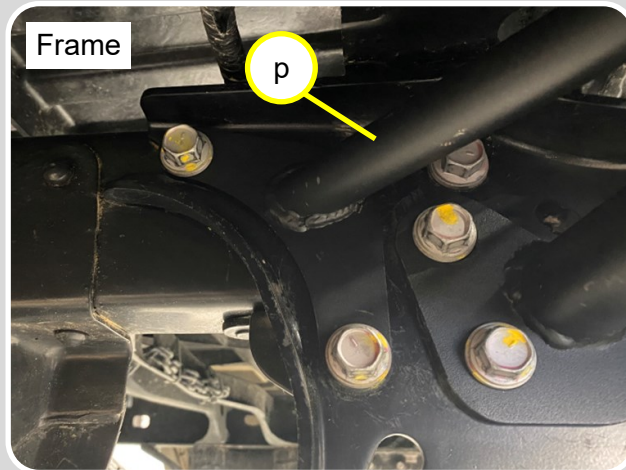
Locate PN: 1040AASG300 (Frame Secondary Bracket), 2X M10(1.5)x30mm Hex screws and 2X M10 Flat Washers from PN: **SB61449DW-01 (Frame Mounts Hardware)**.

Install frame secondary bracket (*m*) by sliding the bracket between the outside corner section of hitch receiver and the inside corner of bumper.

Use a **17mm Socket** to secure 2X M12 Bolts on the frame side (*n*) and a **13mm Socket** to secure the 2X M10 Screws to bumper bracket (*o*).

! IMPORTANT NOTE

Refer to page 16 for Torque Specifications.



Step 10: Install Frame Tertiary Bracket

Locate PN: 1040AASG400 (Frame Tertiary Bracket), 2X M8(1.25)x20mm Torx Head Cap Screws and 2X M8 Flat Washers from PN: **SB61449DW-01 (Frame Mounts Hardware)**.

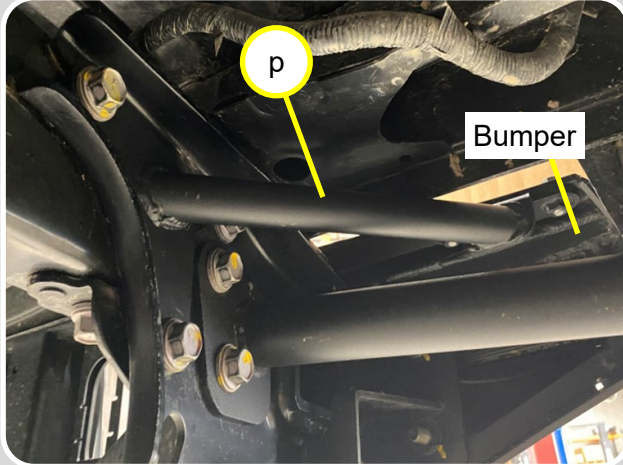
Install Frame Tertiary Bracket (*p*) by sliding the bracket between the outside corner section of the hitch receiver and the inside corner of bumper.

(Continued next page)



For Technical Support / Warranty Information please call 800-776-0767 EXT 1317
or Email at info@smittybilt.com

Installation Instructions

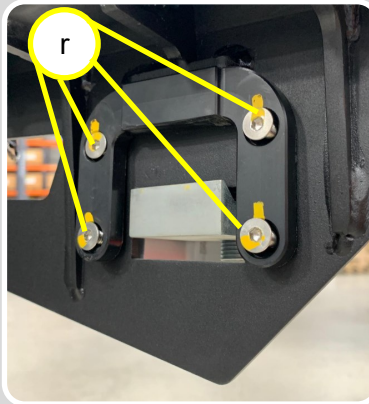
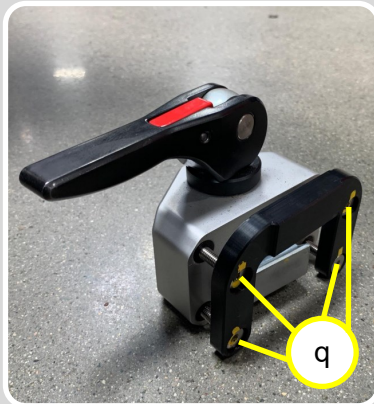


(Step 10: Continued)

Use a **17mm socket** to secure 2X M12 Bolts on the frame side, and a T40 Torx Socket to secure the 2X M8 Torx Screws to the bumper.

! IMPORTANT NOTE

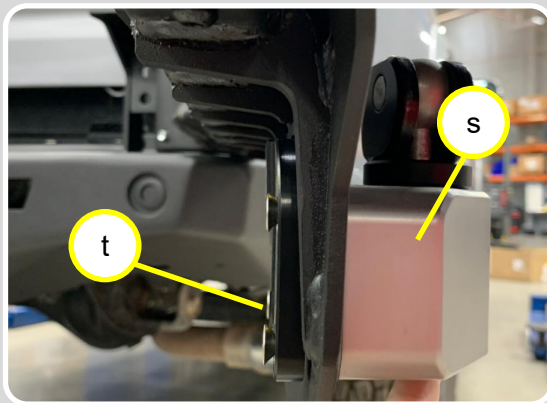
Refer to page 16 for Torque Specifications.



Step 11: Install Latch Housing and Delrin Pad

Locate PN: **1040AASG100 (Swing Gate)** and PN: **SB61449DW-02 (Swing Gate Driver Hinge Hardware Pack)**.

Remove the 4X bolts holding the Delrin pad to the housing (*q*). Install housing on door.



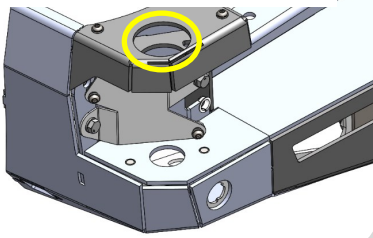
Use Medium strength threadlocker on the 4 bolts just removed. Place the Delrin pad on the inside of the door (*r*) with the handle and housing on the outside (*s*). With the bolts passing through the swing gate, secure the 4X bolts to the housing (*t*). Secure but do not over tighten. Over tightening could lead to plastic part failure.



For Technical Support / Warranty Information please call 800-776-0767 EXT 1317
or Email at info@smittybilt.com

Installation Instructions

Driver Side Top Corner



Step 12: Install Brass Press-in Bushing

Locate PN: 1040AASG2000 (Brass Press-in Bushing) and install on inner hole of swing gate pin pocket (u), on the Driver side top corner of bumper. Gently use a mallet to install fully into bumper pocket.



Step 13: Install Swing Gate to Bumper



IMPORTANT NOTE

This step will require 2 people to complete.

Also ensure the Swing Gate Spacer (*left, circled*) has been pre-installed from the factory. This will ensure the Swing Gate swings freely once in the pocket.



Locate PN:1040AASG100 Swing Gate Assembly, PN: 1040AASG800 Swing Gate Pin, and 1-1/4" Socket.

With the help of another person, slide the Swing Gate into the pocket. While one person holds the Gate in place the other can drop the pin in from the top of the bumper (*v, next page*). It is helpful to rock the Gate up and down slightly as the pin is slid into position.

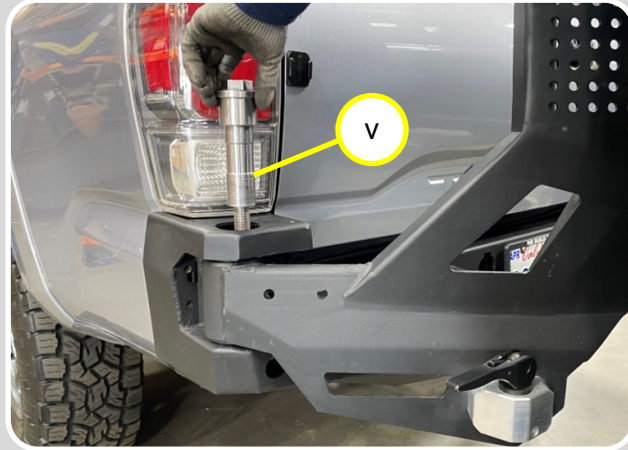
Take care not to knock the Brass Bushing out of place as the pin is inserted into the mounting hole. Once the pin feels it has hit bottom start to thread it into the previously installed nut plate **BY HAND**. Continue rocking the gate up and down slightly (again ensure not to knock the Brass Bushing out of its pocket) until the pin is thread in.

CONTINUED NEXT PAGE...



For Technical Support / Warranty Information please call 800-776-0767 EXT 1317
or Email at info@smittybilt.com

Installation Instructions



(...STEP 13 CONTINUED)

Once in place, check that everything is aligned and not binding and torque the pin to 180 ft-lbs.

! IMPORTANT NOTE

If swing gate pin (*q*) does not sit sub-flush of top bumper surface, pin is not installed fully, keep moving door up and down gently while turning pin and pushing downwards.



Step 14: Install Hinge Cover Plate

Locate **PN: 1040AASG1600 (Hinge Cover Plate)** and 3X Button Head Hex Drive Screws previously removed at Step 4.

Install Hinge Cover Plate to top corner of bumper (*w*), and secure using **3X Button Head Hex Drive Screws** and a **4mm Hex Bit Socket**.

**Prototype shown in photo.*

Step 15: Secure Dovetail Receiver

Align bumper Dovetail Receiver (installed at Step 3) with swing gate latch and torque 2X M8 Torx Screws securing Dovetail receiver to bumper. Use a **T40 Torx Bit Socket**.

! IMPORTANT NOTE

If door is difficult to close, adjust dovetail on bumper-side downwards. Ensure black plastic on swing gate is not hitting dovetail on bumper-side.

Refer to Torque Specifications on page 16.



For Technical Support / Warranty Information please call 800-776-0767 EXT 1317
or Email at info@smittybilt.com

Installation Instructions



Step 16: Adjust Swing Gate Latch

Close the swing gate and turn cam handle clock wise to adjust. Turn until latch securely latches door closed, but it is not too difficult to close handle.

Once handle is adjusted to preference, close door and latch. Install bottom nut using a **19mm Socket**, secure bottom lock nut (x).



Step 17: Add Grease to Swing Gate

Add grease to Swing Gate bearings (y) using a grease gun.

Step 18: Reconnect Battery & Test

Reconnect battery and test functionality of all lights, camera, and sensors.



Your Installation is Now Complete

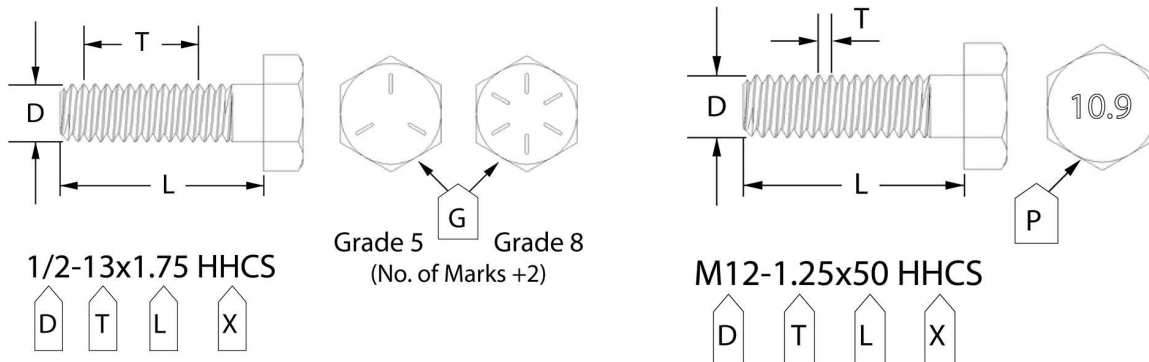


For Technical Support / Warranty Information please call 800-776-0767 EXT 1317
or Email at info@smittybilt.com

Bolt Torque Specifications

Use this only as a guide for hardware without a called out torque specification in the instruction manual.

Bolt Torque and ID						
Decimal System			Metric System			
<i>All Torques in Ft. Lbs. Maximums</i>						
Bolt Size	Grade 5	Grade 8	Bolt Size	Class 9.8	Class 10.9	Class 12.9
5/16	15	20	M6	5	9	12
3/8	30	45	M8	18	23	27
7/16	45	60	M10	32	45	50
1/2	65	90	M12	55	75	90
9/16	95	130	M14	85	120	145
5/8	135	175	M16	130	165	210
3/4	185	280	M18	170	240	290



G= Grade (Bolt Strength)
 D= Nominal Diameter (Inches)
 T= Thread Count (Threads per Inch)
 L= Length (Inches)
 X= Description (Hex Head Cap Screw)

P= Property Class (Bolt Strength)
 D= Nominal Diameter (Millimeters)
 T= Thread Pitch (Thread Width, mm)
 L= Length (Millimeters)
 X= Description (Hex Head Cap Screw)



For Technical Support / Warranty Information please call 800-776-0767 EXT 1317
 or Email at info@smittybilt.com

Notes and Disclaimers

Product cleaning and maintenance instructions

Stainless Steel Finish – Aluminum polish may be used to polish small scratches and scuffs on the finish. Mild soap, window or glass cleaner may be used to clean the finish. Dual state powder coat finish – Mild soap, window or glass cleaner may be used to clean the finish. In order to protect the finish, you may wax your product on a regular basis with pure carnauba automotive wax. Do not use any types of soap, polish or was that contains abrasive that could damage the finish. Textured coated finishes should be cleaned with a mild soap on a damp sponge. Do not apply polish or was that requires to be removed by means of buffing. This type of wax is commonly used at car wash facilities. Chrome Finish – Mild soap, window or glass cleaner may be used to clean the finish. In order to protect the finish, you should wax your product on a regular basis with pure carnauba automotive wax. Do not use any types of soap, polish or was that contains abrasive that could damage the finish.

Limited Warranties

Smittybilt's products are covered under the following limited warranties only. Note that the duration of the limited warranty differs according to the material and finish of the product purchased. Subject to the duration and conditions of the limited warranty stated below, Smittybilt warrants to the original retail purchaser that its products are free from defects in material and workmanship. All other warranties and representations express or implied, are hereby disclaimed, including fitness for merchantability and buyer's intended use or purpose. All parts are sold "AS IS" except for the limited warranties granted herein. Buyer assumes all risks as to the selection, suitability and performance of all goods and products selected. This limited warranty does not cover damage or impairment in any part due to misuse, improper installation, accident or contact with on-road or off-road hazards, product modification, improper or inadequate cleaning and/or maintenance. Smittybilt is not responsible for items damaged during shipping. This warranty is not transferable from the original buyer. For the original Buyer to be eligible for the limited warranty coverage, the Buyer must provide proof of purchase. Smittybilt strongly recommends returning the warranty registration card. Customer's remedy hereunder shall be limited only to repair or replacement (at Smittybilt's option) of any defective part(s) returned to Smittybilt at customer's expense. The determination of whether or not a returned part is defective or subject to coverage under the limited warranties stated herein shall be made at Smittybilt's sole discretion. To assure product quality, Smittybilt reserves the right to change product design, material, specification and finishes without prior notice to customers. This limited warranty gives you specific legal rights and you may also have other rights, which may vary from state to state. Some states do not allow limitations on how long an implied warranty lasts, so the above limitations may not apply as to you. Also, some states do not allow the exclusion or limitation of incidental or consequential damages, so the above limitations or exclusions may not apply to you. Smittybilt reserves the right to discontinue product lines and substitute products or provide other remedies than those listed in this limited warranty for those discontinued products.

Warning

Rollover and other types of vehicle accidents may result in serious injury or death to you, your passengers and others sharing the road. Smittybilt accessories are decorative and are not intended to reduce or avoid injury or damage in the event of an accident. The weight and location of Smittybilt accessories may affect your vehicles' handling, stability and performance, creating an increased risk of accident or rollover. Before installing any accessory, check state laws and assure that the accessory will not obscure any lights or interfere with proper operation on your vehicle's safety equipment. Consult your owner's manual and the Smittybilt instructions, or additional safety information. Smittybilt products, nor the warnings contained herein, are not a substitute for your safe driving. Don't drink and drive, always use seat belts and don't drive faster than conditions permit.



WARNING: Cancer and Reproductive Harm
www.P65Warnings.ca.gov



For Technical Support / Warranty Information please call 800-776-0767 EXT 1317
or Email at info@smittybilt.com



For Technical Support / Warranty Information please call 800-776-0767 EXT 1317
or Email at info@smittybilt.com