



WWW.SMITTYBILT.COM

Installation Instructions
License Plate Bracket
Universal Fitment
Part # 4432

Please read instructions entirely before installing this product.

Parts Included	Qty
Main Plate	1
Roller Brackets	2
6mm Allen Head Screw	4

Parts Included	Qty
5mm Phillips Machine Screw	4
5mm Nut	2
5mm Philips screw	6

Roller Fairlead Mount

Step 1: Loosely attach clamp brackets to main plate using the included 5mm Phillips head screws and nuts. (Fig A, B)



(Fig A)

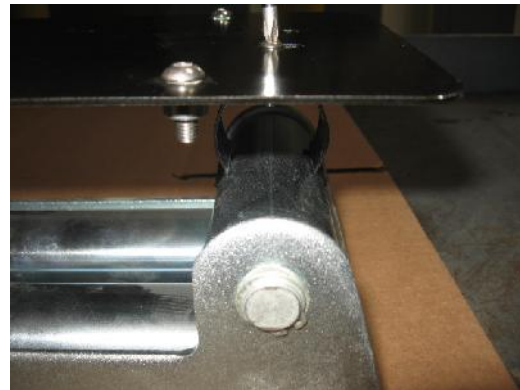


(Fig B)

Step 2: With clamp brackets loose hold plate up to your roller fairlead and lineup the clamps so they are in/near the center of the vertical rollers on the fairlead. (Fig C, D)



(Fig C)



(Fig D)

Step 3: Once the optimal position is acquired tighten the screws completely.



WWW.SMITTYBILT.COM

Installation Instructions
License Plate Bracket
Universal Fitment
Part # 4432

Step 4: Install your license plate on the bracket using the included 6mm Allen head bolts. Installation is now complete.



(Before)



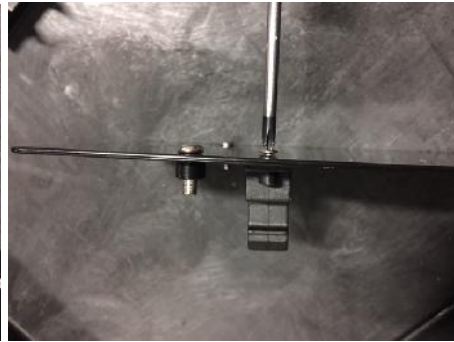
(After)

Aluminum/Hawse Fairlead Mount

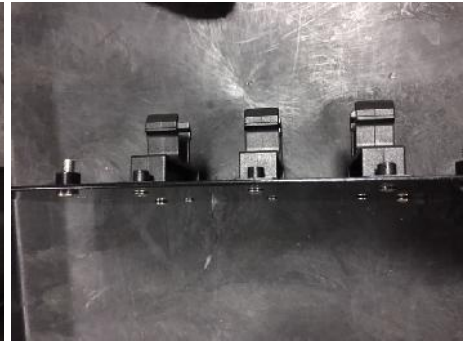
Step 1: Loosely attach the 3 clamp brackets to main plate using the included Phillip self-tapping screws. (Fig E, F, G)



(Fig E)



(Fig F)



(Fig G)

Step 2: Once all 3 brackets are loosely attach, secure them completely making sure they are straight.

Step 3: Hold brackets up to fairlead making sure the rope goes between or to the side of them (Fig H)



WWW.SMITYBILT.COM

Installation Instructions
License Plate Bracket
Universal Fitment
Part # 4432

Step 4: With some care, push brackets into fairlead evenly. Installation is now complete (Fig I). You may now install your license plate on the bracket using the included 6mm Allen head bolts.



(Fig H)



(Fig I)

Compliment your vehicle with other quality parts from Smittybilt



Winch Accessories



GEAR Seat Covers



Winches

Limited Warranties

Smittybilt's products are covered under the following limited warranties only. Note that the duration of the limited warranty differs according to the material and finish of the product purchased. Subject to the duration and conditions of the limited warranty stated below, Smittybilt warrants to the original retail purchaser that its products are free from defects in material and workmanship. All other warranties and representations express or implied, are hereby disclaimed, including fitness for merchantability and buyer's intended use or purpose. All parts are sold "AS IS" except for the limited warranties granted herein. Buyer assumes all risks as to the selection, suitability and performance of all goods and products selected. This limited warranty does not cover damage or impairment in any part due to misuse, improper installation, accident or contact with on-road or off-road hazards, product modification, improper or inadequate cleaning and/or maintenance. Smittybilt is not responsible for items damaged during shipping. This warranty is not transferable from the original buyer. For the original Buyer to be eligible for the limited warranty coverage, the Buyer must provide proof of purchase.

Customer's remedy hereunder shall be limited only to repair or replacement (at Smittybilt's option) of any defective part(s) returned to Smittybilt at customer's expense. The determination of whether or not a returned part is defective or subject to coverage under the limited warranties stated herein shall be made at Smittybilt's sole discretion. Check www.smittybilt.com for complete warranty information.