

# Installation Instructions

# SB

## SMITTYBILT

Rear or Side Awning (4.5' x 8')

Part #: S/B2585



# SB

## SMITTYBILT

For Technical Support / Warranty Information please call 1-800-776-0767  
Smittybilt, 1017 W 600 N STE 4, Ogden, UT 84404

## Introduction

Thank you for choosing Smittybilt accessories for your overlanding needs! If you would like to view our full range of available overlanding accessories, please visit us at [www.smittybilt.com](http://www.smittybilt.com)



Gen 2 Awnings and Mesh Rooms



Overland Tents



Shower Awning

## Important Notes Before Starting

### ! IMPORTANT NOTE

Carefully read through this entire instruction manual thoroughly before attempting to install this part.  
Actual product may differ from photos. Installation will remain the same.

### ! IMPORTANT NOTE

This awning is designed to be used in fair weather. Heavy wind, rain, or snow will cause damage.  
Always use tiedowns and stakes, even if winds are not expected.

### ! WARNING

Park vehicle on flat surface, chock all four wheels and engage parking brake prior to installation.  
Serious injury can occur when working on vehicles alone. When possible, work with another person to reduce risk of injury from strain or other dangers that can occur when working alone.

The following tools will be required to complete the installation of this part:

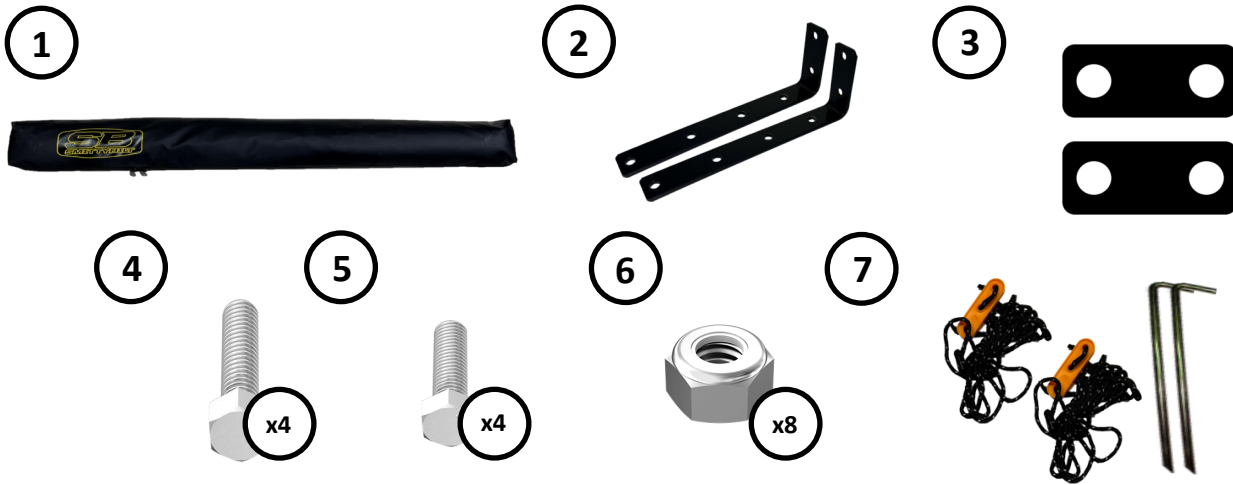
#### TOOLS REQUIRED

3/8" Ratchet Wrench	13mm Socket	13mm Wrench
Drill	Drill Bit Set	Punch/Marker



For Technical Support / Warranty Information please call 1-800-776-0767  
Smittybilt, 1017 W 600 N STE 4, Ogden, UT 84404

## Box Contents



ID	Part Description	QTY
1	Gen 2 Rear Awning	1
2	L-Brackets	2
3	Lower Mount Brackets	2
4	M8-1.25x55mm Hex Head Bolt	4

ID	Part Description	QTY
5	M8-1.25x20mm Hex Head Bolt	4
6	M8-1.25 Nylock Nut	8
7	Stake w/ Cord	2

## Specifications



### Rear or Side Awning

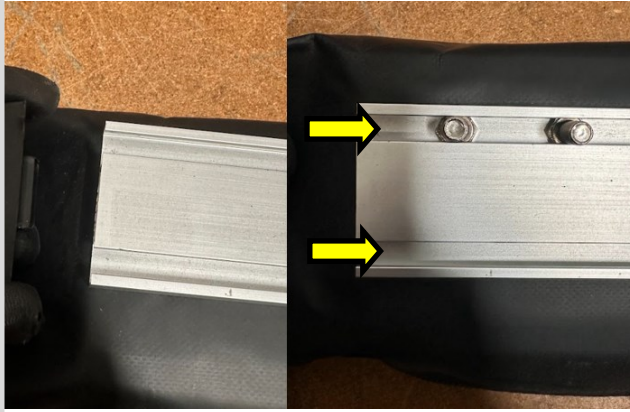
Material	260G Rip-Stop Polyester
Frame and Arms	Aluminum
Travel Cover	600G PVC
Max Mounting Height	82"
Open Size (LxW)	4.5' x 8'
Closed Side (LxWxH)	62" x 4.3" x 4.3"
Features:	<ul style="list-style-type: none"> <li>• Side or Rear Mounting Compatible</li> <li>• 2 Adjustable Tiedowns</li> <li>• 90 Second Setup<sup>1</sup></li> <li>• 2-Year Warranty</li> </ul>

<sup>1</sup> Based on time achieved during testing. Actual setup time may vary.



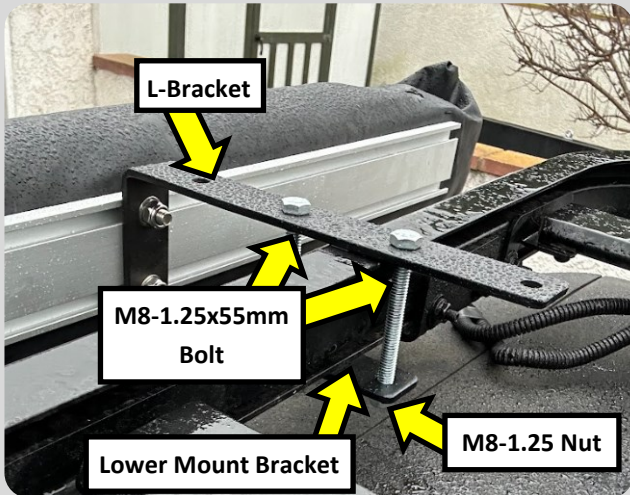
For Technical Support / Warranty Information please call 1-800-776-0767  
Smittybilt, 1017 W 600 N STE 4, Ogden, UT 84404

## Installation Instructions: Rear or Side Awning



### Step 1:

Remove the awning and hardware from its packaging. Lay the awning facing down on a clean worksurface. Remove one of the backside plastic end caps to reveal the start of the bolt tracks. Install (2) **M8-1.25x20mm bolts** per track and slide them towards the center of the awning. Then, close reinstall the plastic end cap. The bolts will still be loose in the track to allow for adjustment. This is normal.



### Step 2:

Find a suitable mounting location for the awning. Make sure that the top of the awning is between **48"-82"** from the ground. Then, using the included (2) **M8-1.25x55mm**, (2) **M8-1.25 Nuts**, and (1) **Lower Mount Bracket** mount the **L-Bracket** to your roof rack. Do the same for the other **L-bracket**. The **L-brackets** must be **24"-48"** apart for proper mounting.

**Note:** This **Rear or Side Awning** is designed to be mounted to an existing roof rack, such as a **Defender Rack** or an **SRC Roof Rack**. It will work with most tubular and square roof racks.



### Step 3:

Slide the bolts along the rail until it matches up with both **L-brackets**. Then with the help of another person, carefully lift the **Rear or Side Awning** into place. Then, install (4) **M8-1.25 Nylock Nuts** as shown to hold the awning in place. Torque the bolts down using the torque guide on **page 8**

**Installation is now complete.**



For Technical Support / Warranty Information please call 1-800-776-0767  
Smittybilt, 1017 W 600 N STE 4, Ogden, UT 84404

## Installation Instructions: Rear or Side Awning



### Step 1:

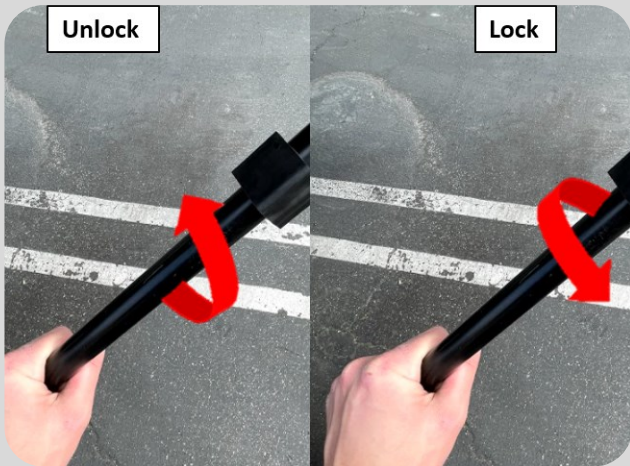
Unzip the protective cover. Then, while holding the awning, release the two retaining straps

**Note: It is recommended to have the assistance of another person during setup.**



### Step 2:

Completely unroll the awning. Then, release the two legs from the awning.



### Step 3:

Adjust the height of the legs by twisting them counterclockwise to allow for adjustment. Then push the pin at the bottom of the leg into the ground (if on soft ground) to help keep the awning in place.

**Note: It is recommended to setup the awning slightly lower in the front to allow for water to run off.**



For Technical Support / Warranty Information please call 1-800-776-0767  
Smittybilt, 1017 W 600 N STE 4, Ogden, UT 84404

## Installation Instructions: Rear or Side Awning



### Step 4:

Swing the horizontal side poles out from the main base of the awning towards the legs. Follow the same procedure from **Step 3** to extend the legs to the correct length.



### Step 5:

Insert the pin of the horizontal pole into the hold at the end of the awning above the legs as shown.



### Step 6:

Secure the awning fabric to the horizontal side poles using the Velcro straps.



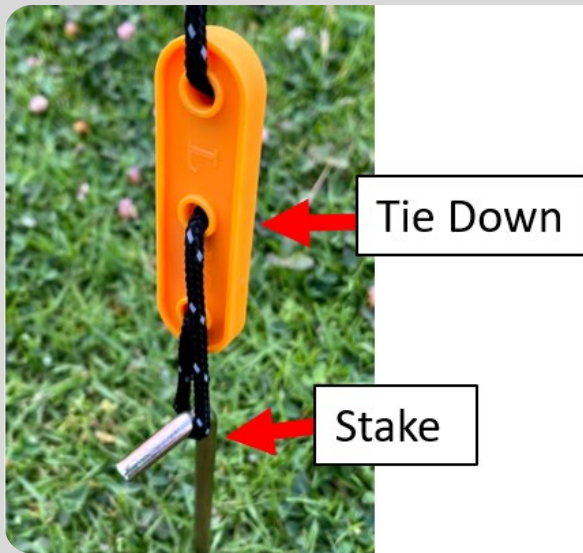
For Technical Support / Warranty Information please call 1-800-776-0767  
Smittybilt, 1017 W 600 N STE 4, Ogden, UT 84404

## Installation Instructions: Rear or Side Awning



### Step 7:

Tie the end of the tie down rope to the loops found on either corner of the front of the awning.



### Step 8:

Secure the tie down to the stake as shown.



### Step 9:

Setup is now complete.

To tear down the awning, follow these directions in reverse order.

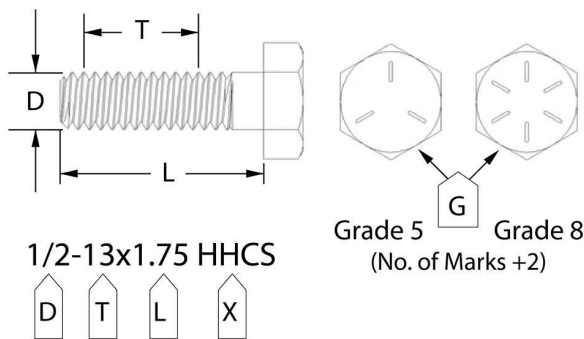


For Technical Support / Warranty Information please call 1-800-776-0767  
Smittybilt, 1017 W 600 N STE 4, Ogden, UT 84404

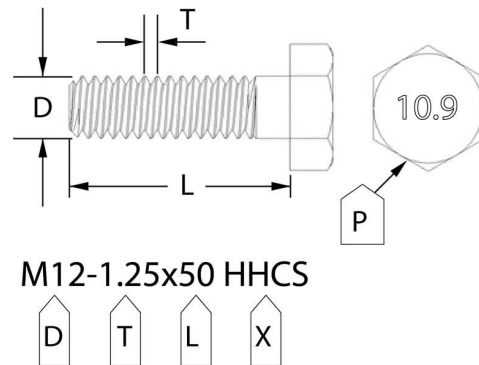
# Bolt Torque Specifications

Use this only as a guide for hardware without a called out torque specification in the instruction manual.

<b>Bolt Torque and ID</b>						
Decimal System			Metric System			
<i>All Torques in Ft. Lbs. Maximums</i>						
Bolt Size	Grade 5	Grade 8	Bolt Size	Class 9.8	Class 10.9	Class 12.9
5/16	15	20	M6	5	9	12
3/8	30	45	M8	18	23	27
7/16	45	60	M10	32	45	50
1/2	65	90	M12	55	75	90
9/16	95	130	M14	85	120	145
5/8	135	175	M16	130	165	210
3/4	185	280	M18	170	240	290



G= Grade (Bolt Strength)  
 D= Nominal Diameter (Inches)  
 T= Thread Count (Threads per Inch)  
 L= Length (Inches)  
 X= Description (Hex Head Cap Screw)



P= Property Class (Bolt Strength)  
 D= Nominal Diameter (Millimeters)  
 T= Thread Pitch (Thread Width, mm)  
 L= Length (Millimeters)  
 X= Description (Hex Head Cap Screw)



For Technical Support / Warranty Information please call 1-800-776-0767  
 Smittybilt, 1017 W 600 N STE 4, Ogden, UT 84404



# Notes and Disclaimers

## Awning Notes:

**Cleaning:** Clean with mild soap and water only. Do not use any abrasive chemicals or brushes to clean the awning.

**Stowing:** Do not put the awning away while wet. Allow the awning to completely dry before putting away.

**Weather Conditions:** This awning is designed for use in fair weather conditions. Do not leave the awning setup when not around and conditions can change unexpectedly. Always angle the front of the awning downward to allow rain to run off the awning. Failure to do so may allow water to pool in the center of the awning and may cause damage.

## SMITTYBILT ADVANTAGE WARRANTY

### 2-Year Limited Warranty

Smittybilt Automotive Products, LLC (SAP) warrants to the original purchaser that (a) the physical components (e.g., metal components, fabric, etc.) of any SAP **Rear or Side Awning** will be free of defects in material and workmanship for 2-years from the date of purchase of the awning. This warranty applies only to the original purchaser of the awning and is non-transferable. To obtain any warranty service, you must provide SAP with a proof of purchase and date of purchase that is acceptable to SAP, such as a copy of your purchase receipt.

This warranty does not cover labor of part replacement of the awning. SAP will, at its sole discretion, provide replacement part(s) for a defective awning or component, provided this is done within the warranty period. To request assistance under warranty, one must call or email using the phone number or email at the bottom of this page. This warranty does not apply (1) to wearable components; or (2) if the awning has been damaged, including, but not limited to: abuse, misuse, collision, modification, misapplication, improper installation, or improper service. This warranty is void if any SAP serial number has been removed or defaced; or if awning is used for any commercial, industrial, or rental applications. This warranty only applies to Smittybilt Awnings bought, sold, and used within the United States or Canada unless otherwise specifically agreed in writing by SAP.

THE WARRANTY SET FORTH ABOVE IS THE ONLY WARRANTY. THERE ARE NO OTHER WARRANTIES, EXPRESSED OR IMPLIED, INCLUDING BUT NOT LIMITED TO IMPLIED WARRANTIES OF MERCHANTABILITY OR FITNESS FOR A PARTICULAR PURPOSE. ANY IMPLIED WARRANTY WHICH BY LAW MAY NOT BE EXCLUDED IS LIMITED TO A DURATION OF ONE (1) YEAR FROM THE DATE OF ORIGINAL RETAIL PURCHASE OF THE PRODUCT. No SAP dealer, agent, or employee is authorized to make any modification, extension or addition to this warranty. SAP SHALL NOT BE LIABLE FOR SPECIAL, INDIRECT, INCIDENTAL OR CONSEQUENTIAL DAMAGES (INCLUDING, BUT NOT LIMITED TO, LOST PROFITS, DOWNTIME OR LOSS OF USE) UNDER ANY LEGAL THEORY, EVEN IF SAP WAS ADVISED OF THE POSSIBILITY OF SUCH DAMAGES. Some states do not allow the exclusion of implied warranties or the exclusion or limitation of liability for incidental or consequential damages, or limitations on how long an implied warranty lasts, so the above limitation or exclusion may not apply to you. This Warranty gives you specific legal rights. You may also have other rights that vary from state to state. SAP reserves the right to change product design without notice. In situations in which SAP has changed a product design, SAP shall have no obligation to upgrade or otherwise modify previously manufactured products. For warranty inquiries contact SAP at:

Smittybilt Automotive Products, LLC

Customer Service Department

Call 1-800-776-0767 or Email [info@smittybilt.com](mailto:info@smittybilt.com)



**WARNING: Cancer and Reproductive Harm**  
[www.P65Warnings.ca.gov](http://www.P65Warnings.ca.gov)



For Technical Support / Warranty Information please call 1-800-776-0767  
Smittybilt, 1017 W 600 N STE 4, Ogden, UT 84404