

# Installation Instructions



## Quick Release Tent and Accessory Mounting Kit Part #: S/B2500



For Technical Support / Warranty Information please call **800-776-0767** or email [info@smittybilt.com](mailto:info@smittybilt.com)  
1017 W 600 N, STE 4, Ogden, UT 84404

## Introduction

Thank you for choosing Smittybilt accessories for your vehicle. If you would like to view our full range of available accessories, please visit us at [www.smittybilt.com](http://www.smittybilt.com)



S/B 18606



S/B 4505 S/B 4530 S/B 4591



S/B 2795

## Important Notes Before Starting

### ! IMPORTANT NOTE

Carefully read through this entire instruction manual thoroughly before attempting to install this part. Please refer to the vehicles owner's manual for roof or bed weight capacity (include weight of rack). Refer to the product manual for roof or bed rack weight capacity. Check that all fasteners are properly torqued after installing a roof or bed rack and driving a short distance. Fasteners should be checked regularly before loading roof or bed rack. Fasten loads securely and evenly distribute loads across the rack. Lower the center of gravity of all loads as much as possible. Wind can affect driving sensitivity with racks.

### ! WARNING

Serious injury can occur when working on vehicles alone.

When possible, work with another person to reduce risk of injury from strain or other dangers that can occur when working alone.

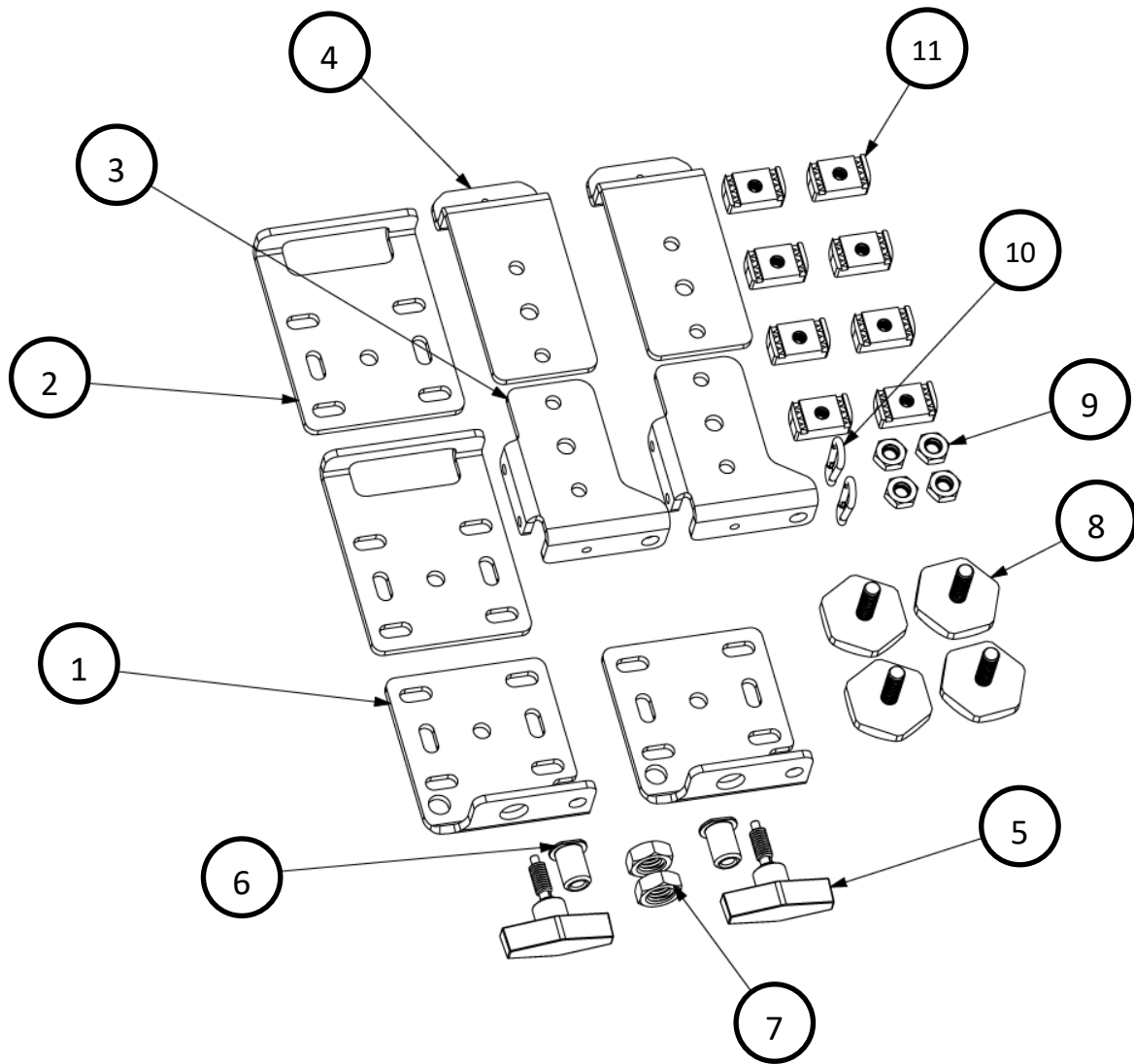
### TOOLS REQUIRED

Metric Wrench Set	Metric Socket Set	Socket Wrench
Torque Wrench		



For Technical Support / Warranty Information please call **800-776-0767** or email [info@smittybilt.com](mailto:info@smittybilt.com)  
1017 W 600 N, STE 4, Ogden, UT 84404

# Box Contents



Item	Description	QTY
1	Mounting Bracket A	2
2	Mounting Bracket B	2
3	Mounting Bracket C	2
4	Mounting Bracket D	2
5	Quick Release Pin	2
6	Quick Release Pin Housing	2

Item	Description	QTY
7	Pin Housing Nut	2
8	Rubber Bumpers	4
9	Rubber Bumper Jam Nuts	4
10	Carabiner	2
11	Channel Nuts	8
—	Mounting Hardware	1



For Technical Support / Warranty Information please call **800-776-0767** or email [info@smittybilt.com](mailto:info@smittybilt.com)  
 1017 W 600 N, STE 4, Ogden, UT 84404

## Hardware Packs

Item	Description	QTY
—	<b>Mounting Hardware Pack</b>	<b>1</b>
	M8 1.25x20 HHCS	16
	M8 1.25x25 HHCS	8
	M8 1.25x50 HHCS	8
	M8 Flat Washer	24
	M8 Lock Washer	8
	M8 Nylock Nut	16
	Flat Strap Mounting Bracket	4



For Technical Support / Warranty Information please call **800-776-0767** or email [info@smittybilt.com](mailto:info@smittybilt.com)  
1017 W 600 N, STE 4, Ogden, UT 84404

# Installation Instructions

## Step 1: Set-Up

Open the box containing your Smittybilt Quick Release Mounts and check all parts and hardware against the Bill of Materials outlined on the first few pages of these instructions. If anything is missing, contact Smittybilt factory technical support.

Park vehicle on a flat, level surface and apply the parking brake. Decide if the tent will open to the driver side or passenger side of the vehicle. If mounting to a roof rack, decide if the Quick Release Mounts will pivot towards the front, rear, or one side of the vehicle. If mounting to a bed rack, adjust your bed rack rails forward or backward with enough space between to mount your tent with enough room for the tent to pivot towards the cab.

**NOTE:** In these instructions we mount a Smittybilt roof top tent, but these mounts can be adapted to any accessory you're mounting, such as this Smittybilt 91L GearPack Hard Protective Case.

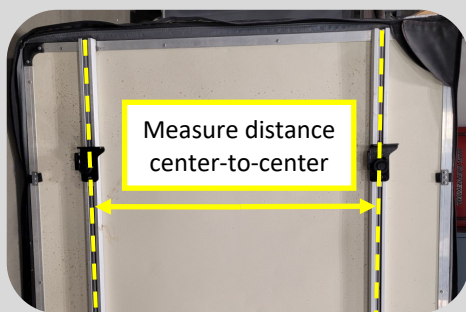


## Step 2: Mounting the Quick Release Pins

Mount the quick release pins to the A brackets (2).

Place the quick release pin housing through the appropriate hole on the A bracket and secure it with the pin housing nut.

Screw the quick release pin into the housing and tighten down the jam nut.



## Step 3: Mounting the Quick Release Pins

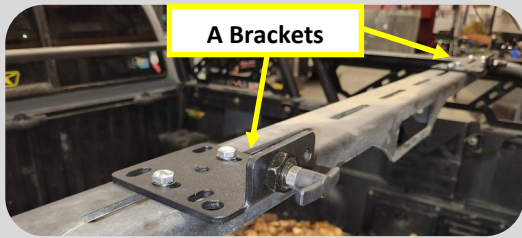
Measure the distance between the tent mounting tracks, center to center.

Each pair of bracket will be mounted the same distance apart, center to center, as the tent mounting tracks.



For Technical Support / Warranty Information please call **800-776-0767** or email [info@smittybilt.com](mailto:info@smittybilt.com)  
1017 W 600 N, STE 4, Ogden, UT 84404

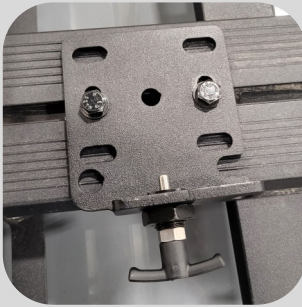
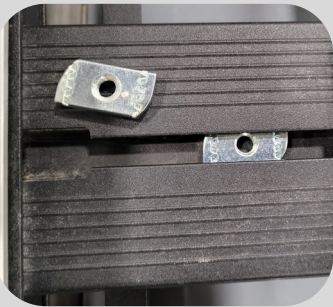
# Installation Instructions



## Step 4a: Mounting the A and B brackets on a Bed Rack

Using either **1)** the 20mm / 25mm M8 bolts and hardware or **2)** the 50mm M8 bolts, hardware, and metal straps, mount the A brackets (2) on the rail closest to tail gate and the B brackets (2) on the rail closest to cab .

Mount each set of brackets the same distance apart, center to center, as the measurement from *Step 3*. Don't tighten the mounting hardware completely.

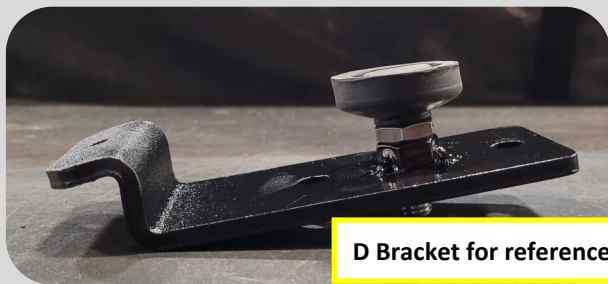
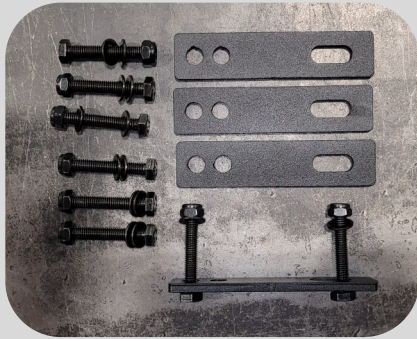


## Step 4b: Mounting the A and B brackets on a Roof Rack

If mounting to a SB Defender Roof Rack, use the 20mm M8 bolts, lock washers, flat washers, and channel nuts. For other roof racks, use either **1)** the 20mm / 25mm M8 bolts and hardware or **2)** the 50mm M8 bolts, hardware, and metal straps.

Mount the B brackets (2) towards the end of the rack where you would like the pivot to be and the A brackets (2) towards the opposite end.

Mount each set of brackets the same distance apart, center to center, as the measurement from *Step 3*. Don't tighten the mounting hardware completely.



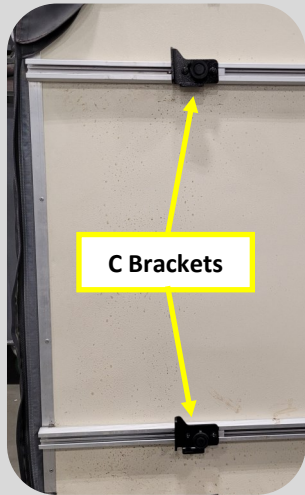
## Step 5: Rubber Bumpers

Screw a jam nut onto each rubber bumper. Screw each rubber bumper completely into the welded nut on the C and D brackets.

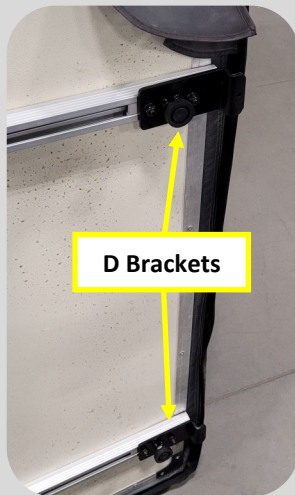


For Technical Support / Warranty Information please call **800-776-0767** or email [info@smittybilt.com](mailto:info@smittybilt.com)  
1017 W 600 N, STE 4, Ogden, UT 84404

## Installation Instructions



C Brackets



D Brackets

### Step 6: Mount the C and D brackets on the tent

Mount the D brackets all the way to one end of the tracks on the end of the tent where you would like it to pivot. Tighten D bracket hardware completely.

Next, mount the C brackets the same distance apart from the D brackets, center to center, as the A brackets are from the B brackets. Don't tighten the mounting hardware completely.



### Step 7: Mounting the Tent to the Bed/Roof Rack

With some help, lift the tent onto your bed rack or roof rack.

Slide the tabs on the D brackets into the slots on the B brackets.

Adjust the B brackets as necessary to line up with the D brackets and then lower the tent down.



Clip the carabiners into the hole in the tab on the D brackets to keep the D brackets from coming out of the B brackets.



For Technical Support / Warranty Information please call **800-776-0767** or email [info@smittybilt.com](mailto:info@smittybilt.com)  
1017 W 600 N, STE 4, Ogden, UT 84404

## Installation Instructions

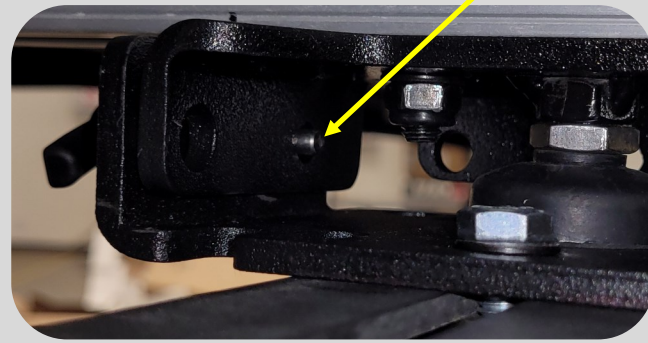
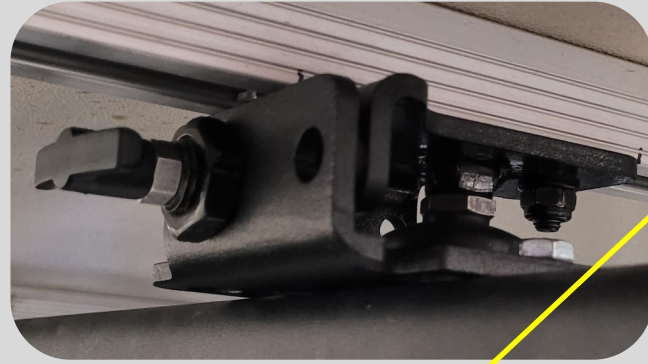
### Step 8: Mounting the Tent to the Bed Rack

With the tent lowered down, latch the C brackets onto the A brackets with the quick release pins.

Adjust the A and C brackets and the rubber bumpers as necessary so that the quick release pins line up with and latch smoothly into the appropriate holes on the C brackets.

The pins should slide against the ramped edge on the C brackets as the tent is lowered so that they will latch without having to manually pull the T-handle out. The pins should also not feel “stuck” in the holes on the C brackets when pulling the T-handle out.

**NOTE:** A lock can be used in the hole to the right of each quick release pin while the tent is latched.



### Step 9: Final Adjustments

Make final adjustments necessary to ensure the tent isn't mounted crooked, there is adequate space to pivot the tent up, and all brackets and pins line up correctly. Tighten all hardware to the specifications outlined at the end of these instructions.



For Technical Support / Warranty Information please call **800-776-0767** or email [info@smittybilt.com](mailto:info@smittybilt.com)  
1017 W 600 N, STE 4, Ogden, UT 84404



## Installation Complete



**Congratulations! Your installation is now complete.**

**Enjoy your new Smittybilt Quick Release Tent and Accessory Mounting Kit.**

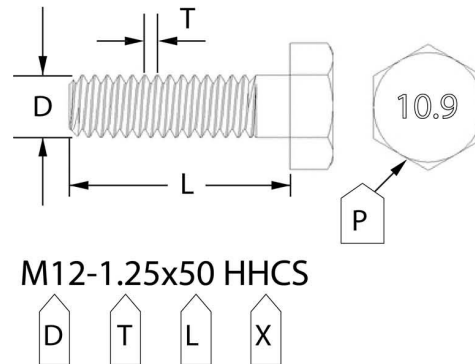
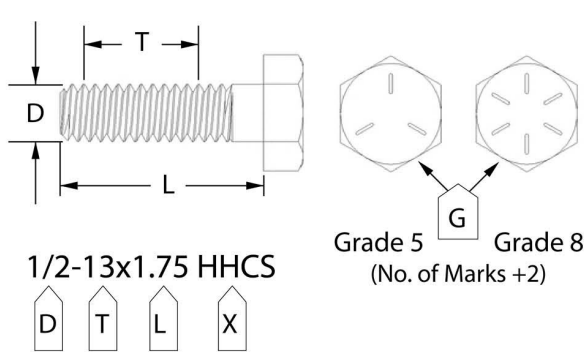


For Technical Support / Warranty Information please call **800-776-0767** or email [info@smittybilt.com](mailto:info@smittybilt.com)  
1017 W 600 N, STE 4, Ogden, UT 84404

# Bolt Torque Specifications

Use this only as a guide for hardware without a called out torque specification in the instruction manual.

<b>Bolt Torque and ID</b>						
Decimal System			Metric System			
<i>All Torques in Ft. Lbs. Maximums</i>						
Bolt Size	Grade 5	Grade 8	Bolt Size	Class 9.8	Class 10.9	Class 12.9
5/16	15	20	M6	5	9	12
3/8	30	45	M8	18	23	27
7/16	45	60	M10	32	45	50
1/2	65	90	M12	55	75	90
9/16	95	130	M14	85	120	145
5/8	135	175	M16	130	165	210
3/4	185	280	M18	170	240	290



G= Grade (Bolt Strength)  
 D= Nominal Diameter (Inches)  
 T= Thread Count (Threads per Inch)  
 L= Length (Inches)  
 X= Description (Hex Head Cap Screw)

P= Property Class (Bolt Strength)  
 D= Nominal Diameter (Millimeters)  
 T= Thread Pitch (Thread Width, mm)  
 L= Length (Millimeters)  
 X= Description (Hex Head Cap Screw)



For Technical Support / Warranty Information please call **800-776-0767** or email [info@smittybilt.com](mailto:info@smittybilt.com)  
 1017 W 600 N, STE 4, Ogden, UT 84404

# Notes and Disclaimers

## Product cleaning and maintenance instructions

Stainless Steel Finish – Aluminum polish may be used to polish small scratches and scuffs on the finish. Mild soap, window or glass cleaner may be used to clean the finish. Dual state powder coat finish – Mild soap, window or glass cleaner may be used to clean the finish. In order to protect the finish, you may wax your product on a regular basis with pure carnauba automotive wax. Do not use any types of soap, polish or wax that contains abrasive that could damage the finish. Textured coated finishes should be cleaned with a mild soap on a damp sponge. Do not apply polish or wax that requires to be removed by means of buffing. This type of wax is commonly used at car wash facilities. Chrome Finish – Mild soap, window or glass cleaner may be used to clean the finish. In order to protect the finish, you should wax your product on a regular basis with pure carnauba automotive wax. Do not use any types of soap, polish or wax that contains abrasive that could damage the finish.

## SMITTYBILT ADVANTAGE WARRANTY

### LIMITED-LIFETIME WARRANTY FOR STRUCTURAL COMPONENTS

#### 5-YEAR FINISH WARRANTY

Smittybilt Automotive Products, LLC (SAP) warrants to the original purchaser that (a) the physical components (e.g., metal components, welds, etc.) of any SAP **Quick Release Tent and Accessory Mounting Kit** will be free of defects in material and workmanship for the lifetime of the product from the date of purchase of the Quick Release Tent and Accessory Mounting Kit, and (b) the finish will be free of defects in material and workmanship for a period of 5-years from the original date of purchase. This warranty applies only to the original purchaser of the Quick Release Tent and Accessory Mounting Kit and is non-transferable. To obtain any warranty service, you must provide SAP with a proof of purchase and date of purchase that is acceptable to SAP, such as a copy of your purchase receipt.

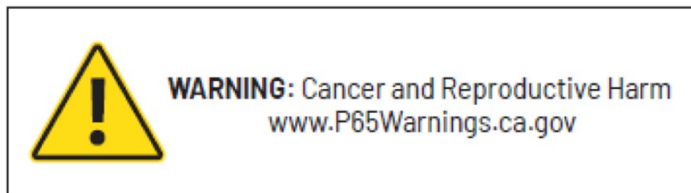
This warranty does not cover labor of part replacement of the Quick Release Tent and Accessory Mounting Kit. SAP will, at its sole discretion, provide replacement part(s) for a defective Quick Release Tent and Accessory Mounting Kit or component, provided this is done within the warranty period. To request assistance under warranty, one must call or email using the phone number or email at the bottom of this page. This warranty does not apply (1) wearable components; or (2) if the Quick Release Tent and Accessory Mounting Kit has been damaged, including, but not limited to: abuse, misuse, collision, modification, misapplication, improper installation, or improper service. This warranty is void if any SAP serial number has been removed or defaced; or if the Quick Release Tent and Accessory Mounting Kit is used for any commercial, industrial, or rental applications. This warranty only applies to Quick Release Tent and Accessory Mounting Kit bought, sold, and used within the United States or Canada unless otherwise specifically agreed in writing by SAP.

THE WARRANTY SET FORTH ABOVE IS THE ONLY WARRANTY. THERE ARE NO OTHER WARRANTIES, EXPRESSED OR IMPLIED, INCLUDING BUT NOT LIMITED TO IMPLIED WARRANTIES OF MERCHANTABILITY OR FITNESS FOR A PARTICULAR PURPOSE. ANY IMPLIED WARRANTY WHICH BY LAW MAY NOT BE EXCLUDED IS LIMITED TO A DURATION OF ONE (1) YEAR FROM THE DATE OF ORIGINAL RETAIL PURCHASE OF THE PRODUCT. No SAP dealer, agent, or employee is authorized to make any modification, extension or addition to this warranty. SAP SHALL NOT BE LIABLE FOR SPECIAL, INDIRECT, INCIDENTAL OR CONSEQUENTIAL DAMAGES (INCLUDING, BUT NOT LIMITED TO, LOST PROFITS, DOWN TIME OR LOSS OF USE) UNDER ANY LEGAL THEORY, EVEN IF SAP WAS ADVISED OF THE POSSIBILITY OF SUCH DAMAGES. Some states do not allow the exclusion of implied warranties or the exclusion or limitation of liability for incidental or consequential damages, or limitations on how long an implied warranty lasts, so the above limitation or exclusion may not apply to you. This Warranty gives you specific legal rights. You may also have other rights that vary from state to state. SAP reserves the right to change product design without notice. In situations in which SAP has changed a product design, SAP shall have no obligation to upgrade or otherwise modify previously manufactured products. For warranty inquiries contact SAP at:

Smittybilt Automotive Products, LLC

Customer Service Department

Call 1-800-776-0767 or



Email [info@smittybilt.com](mailto:info@smittybilt.com)



For Technical Support / Warranty Information please call **800-776-0767** or email [info@smittybilt.com](mailto:info@smittybilt.com)  
1017 W 600 N, STE 4, Ogden, UT 84404