

PRO COMP

PCSRAMLL311

94-24 RAM 1500 4WD
94-12 RAM 2500/3500
4WD

Step by step instructions and checklist: Use the proper tools and safety equipment to perform all work. Torque all fasteners to proper specifications and double check work. Align your vehicle after installation.



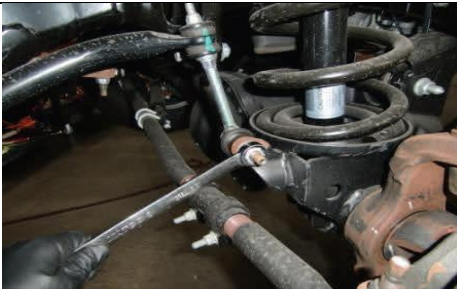
Raise and support vehicle using jack stands or lift.



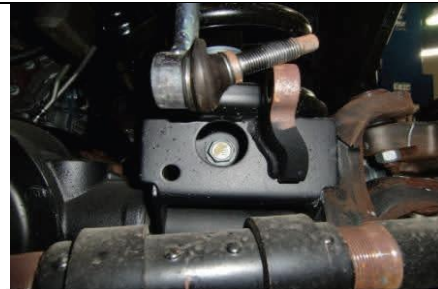
Remove Tires and set aside.



Support suspension with a floor jack.



Disconnect driver and passenger side lower sway bar links.



Remove lower shock mounting bolt located below spring



Loosen all (3) upper shock tower mounting nuts. Leave on.



Slowly lower axle in order to remove shock and coil spring.



Remove spring towards the front of the vehicle.



Next, remove upper rubber spring isolator.



Then remove shock tower nuts and retaining plate.

Your new spacer replaces this retaining plate. Install it and reverse the order disassembly.

Then reconnect lower shock bolt and tighten the upper shock mounting bracket. Reinstall wheels/tires, lower to ground and torque. Reconnect lower sway bar end-links and test drive. Re-check all work performed and have vehicle aligned.

Final Checks & Adjustments

Post Installation Warnings: Once the vehicle is lowered to the ground, check all parts which have rubber or urethane components to insure proper torque. Torque wheels to factory specs. Move vehicle backwards and forwards a short distance to allow suspension components to adjust. Turn the front wheels completely left then right and verify adequate tire, wheel, brake line, and ABS wire clearance. Test and inspect steering, brake and suspension components for tightness and proper operation. Inspect brakes hoses and ABS lines for adequate slack at full extension. Failure to perform the post inspection checks may result in vehicle component damage and/or personal injury or death to driver and/or passengers. Test drive vehicle and re-check the torque of all fasteners and re-torque wheels on vehicle.

Wheel Alignment/Headlamp Adjustment:

It is necessary to have a proper and professional wheel alignment performed by a certified alignment technician. Align the vehicle to factory specifications. It is recommended that your vehicle alignment be checked after any off-road driving. In addition to your vehicle alignment, for your safety and others, it is necessary to check and adjust your vehicle headlamps for proper aim and alignment.

Vehicle Re-Torque and Safety Inspection:

Upon completion of all services and adjustments performed on your vehicle, and within 50 miles of driving, check to ensure all fasteners and hardware are properly torqued to specification as noted in the vehicles factory service manual or the torque chart included.



1017 W 600 N,
Ogden, UT 84404
Toll Free: 800-776-0767
Email: info@procompusa.com

WWW.PROCOMPUSA.COM